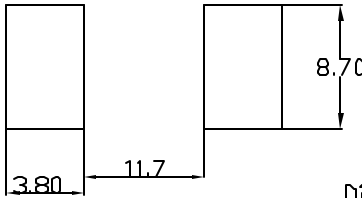
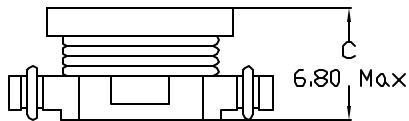
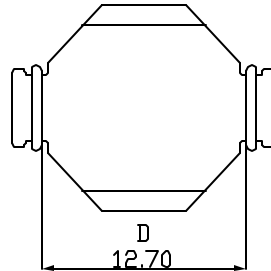
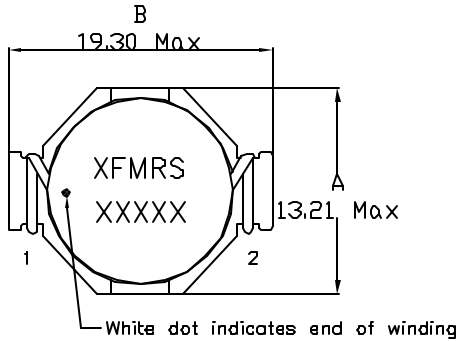


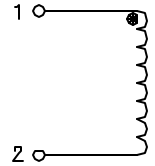
## 2XFS1M SERIES INDUCTORS

### Mechanical Dimensions:



TOLERANCES:  
 .xxx ± 0.25  
 Dimensions in MM

### Schematic:



### SUGGESTED PCB LAYOUT

Part Number	INDUCTANCE μH (RATED)	QCL <sup>(1)</sup> μH ± 20%	I <sub>rms</sub> <sup>(2)</sup> Amperes	I <sub>SAT</sub> <sup>(3)</sup> Amperes	DCR <sup>(4)</sup> Ohms Max.
2XF00047S1M	0.47	0.452	16.0	25.1	0.0021
2XF00100S1M	1.00	1.34	12.5	15.3	0.0034
2XF00150S1M	1.50	2.08	10.0	12.0	0.0053
2XF00220S1M	2.20	3.01	9.2	10.2	0.0074
2XF00330S1M	3.30	3.96	8.0	9.3	0.0083
2XF00470S1M	4.70	5.00	6.5	7.7	0.0114
2XF00680S1M	6.80	7.70	5.8	6.2	0.0183
2XF01000S1M	10.0	11.00	4.3	5.2	0.0261
2XF01500S1M	15.0	16.38	3.9	4.3	0.0317
2XF02200S1M	22.0	23.93	3.1	3.7	0.0491
2XF03300S1M	33.0	33.85	2.4	3.0	0.0688
2XF04700S1M	47.0	51.00	1.9	2.4	0.1082
2XF06800S1M	68.0	69.50	1.6	2.0	0.1558
2XF10000S1M	100.0	101.40	1.4	1.8	0.2053
2XF15000S1M	150.0	141.90	1.04	1.02	0.3514
2XF22000S1M	220.0	207.80	0.82	0.85	0.5450
2XF33000S1M	330.0	318.20	0.67	0.70	0.8243
2XF47000S1M	470.0	470.80	0.56	0.58	1.1914
2XF68000S1M	680.0	689.70	0.46	0.48	1.7742
2XF10001S1M	1000.0	1080.0	0.38	0.40	2.6571

- (1) Open Circuit Inductance Test Parameter @100KHz 0.250Vrms 0.0Adc
- (2) RMS Current for an Approximate ΔT of 40°C, at an Ambient Temperature of 85°C
- (3) Peak Current For Approximate 30% Rolloff
- (4) DCR limits 20°C
- (5) Operating Temp -40 to +85°C
- (6) Tape & Reel Packaging Standard, 400 Pcs per 13"Reel