

**PLEASE CHECK WWW.MOLEX.COM FOR LATEST PART INFORMATION**

**Part Number:** [0512342001](#)  
**Status:** **Active**  
**Description:** CRC™ Shielded Rectangular I/O Plug Housing, For Plug Assembly, Male Terminal, Signal, 20 Circuits, Polarization Type Standard

**Documents:**

[Drawing \(PDF\)](#) [Product Specification PS-51238-018 \(PDF\)](#)  
[Product Specification PS-51238-010 \(PDF\)](#) [RoHS Certificate of Compliance \(PDF\)](#)

**Agency Certification**

CSA	LR19980
TUV	R72081037
UL	E29179

**General**

Product Family	I/O Connectors
Series	<a href="#">51234</a>
Application	N/A
Component Type	Housing
Product Name	CRC™
Type	N/A

**Physical**

Boot Color	N/A
Breakaway	No
Circuits (Loaded)	N/A
Circuits (maximum)	20
Color - Resin	Black
Durability (mating cycles max)	100
Flammability	94V-0
Gender	Male
Keying to Mating Part	Yes
Lock to Mating Part	Yes
Material - Plating Mating	n/a
Material - Resin	Polyester
Number of Rows	5
Orientation	Vertical
Packaging Type	Tray
Panel Mount	N/A
Pitch - Mating Interface (in)	0.118 In
Pitch - Mating Interface (mm)	3.00 mm
Pitch - Term. Interface (in)	0.118 In
Pitch - Term. Interface (mm)	3.00 mm
Polarized to Mating Part	Yes
Surface Mount Compatible (SMC)	No
Temperature Range - Operating	-40°C to +105°C
Termination Interface: Style	N/A
Waterproof / Dustproof	No

**Electrical**

Current - Maximum per Contact	1A, 2A, 3.5A, 3A
Shield Type	Full Shield
Shielded	Yes
Voltage - Maximum	250V AC (RMS)/DC

**Material Info**



**EU RoHS**

**ELV and RoHS Compliant**  
**REACH SVHC Contains SVHC: No**  
**Halogen-Free Status**  
**Not Halogen-Free**

**China RoHS**



**Need more information on product environmental compliance?**

Email [productcompliance@molex.com](mailto:productcompliance@molex.com)  
 For a multiple part number RoHS Certificate of Compliance, [click here](#)

Please visit the [Contact Us](#) section for any non-product compliance questions.

**Search Parts in this Series**

[51234Series](#)

**Mates With**

[51238](#)

**Use With**

56116, 56117, 56118 and 56119 male terminal, [56380](#) plug shell body, [56381](#) plug shell cover

**Reference - Drawing Numbers**

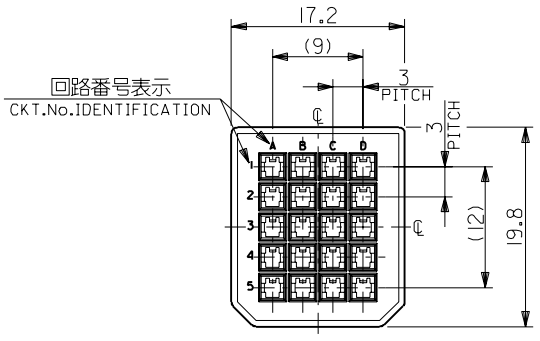
Product Specification  
Sales Drawing

PS-51238-010, PS-51238-018, RPS-51238-001  
SD-51234-005

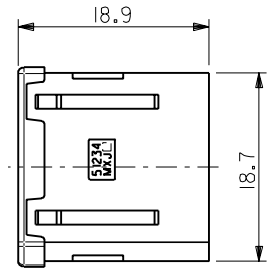
This document was generated on 04/06/2010

**PLEASE CHECK [WWW.MOLEX.COM](http://WWW.MOLEX.COM) FOR LATEST PART INFORMATION**

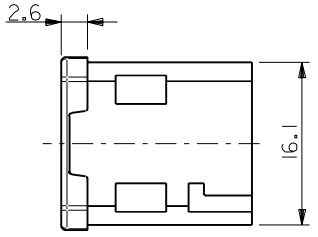
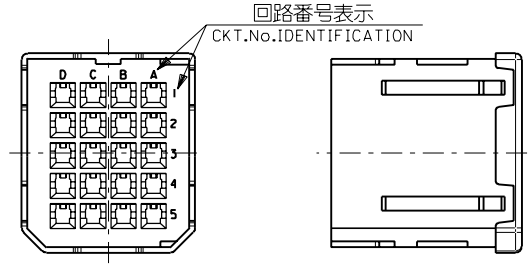
DWG. NO. SD-51234-005



嵌合側  
MATING SIDE



電線挿入側  
WIRE SIDE



注記  
NOTES

1. 材質 MATERIAL  
ガラス入りPBT樹脂 UL94V-0 色:黒  
HOUSING : PBT G.F. UL94V-0 COLOR : BLACK
2. 適用端子 : 56116-8\*90 , 56117-8\*90  
56118-8\*90 , 56119-8\*90  
APPLICABLE CRIMP PIN : 56116-8\*90 , 56117-8\*90  
56118-8\*90 , 56119-8\*90
3. 適用シエルボディ : 56380-2000  
APPLICABLE SHELL BODY : 56380-2000
4. 適用シエルカバー : 56381-2000  
APPLICABLE SHELL COVER : 56381-2000
5. 嵌合相手 : 51238-201\*  
MEET WITH : 51238-201\*

<誤嵌合防止キー(極性)タイプ> <POLARITY KEY TYPE>

51234-2001	51234-2002	51234-2003	51234-2004	51234-2005
STANDARD TYPE	A TYPE	B TYPE	C TYPE	D TYPE

C-4	D	51234-2005	51234-**0*	20
C-3	C	51234-2004		
B-3	B	51234-2003		
B-2	A	51234-2002		
—	STANDARD	51234-2001		
POLARITY POSITION (CIRCUIT No.)	POLARITY TYPE	MATERIAL No.	MODEL No.	CIRCUIT

DO NOT SCALE DRAWING

EC NO. DRWN: CHK: APPR:	EC NO. DRWN: CHK: APPR:	EC NO. DRWN: CHK: APPR:	REVISED 01/10/04 EC NO. J2002-0786 DRWN: S.AKIYAMA CHK: J.MIYAZAWA APPR: Y.O.ITO	EC NO. JD2001-1040 DRWN: S.AKIYAMA CHK: J.MIYAZAWA APPR: H.IKESUGI	MATERIAL 材料 注記参照 SEE NOTES	GENERAL TOLERANCES: (UNLESS SPECIFIED) 一般公差	SCALE 2-1	DESIGN UNITS <input checked="" type="checkbox"/> mm <input type="checkbox"/> INCH	THIRD ANGLE PROJECTION	DIMENSIONS: <input type="checkbox"/> mm <input type="checkbox"/> INCH <input checked="" type="checkbox"/> mm ONLY	SHT	REV
			A	0	—	10 UNDER 未満 ±0.2	DRAWN BY & DATE S. Akiyama 1/01/25		TITLE: COMPACT ROBOT CONN. (CRC) PLUG PIN HS'G			
					FINISH 仕上げ —	10 OVER 30 UNDER 未満 ±0.25	CHECKED BY & DATE J. Miyazawa / Y. Ito					
					WIRE RANGE 適用電線範囲 —	30 OVER 以上 ±0.3	APPROVED BY & DATE S. Akiyama					
					INS. RANGE 被覆外径 —	ANGLE 角度 ±3°	CAD FILE NAME 51234005.S01					
THIS DRAWING CONTAINS INFORMATION THAT IS PROPRIETARY TO MOLEX INCORPORATED AND SHOULD NOT BE USED WITHOUT WRITTEN PERMISSION.												SIZE B

A  
51234005:501