

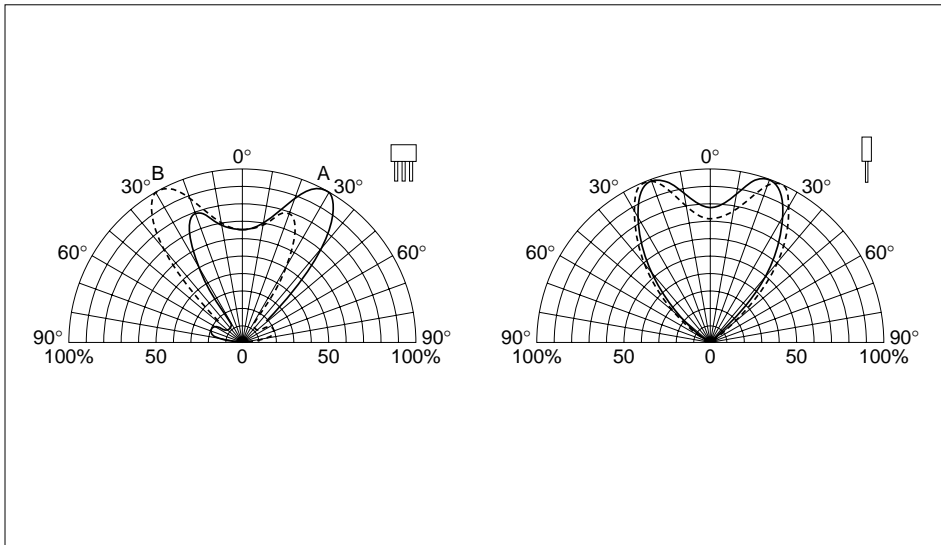
■3.3 × 6 Bow Shaped Bicolor LEDs

SML70023 Series (available as Direct Mount)

Part Number	Emitting Color	Lens Color	Forward Voltage		Conditions IF (mA)	Luminous Intensity		Peak Wavelength		Dominant Wavelength		Spectrum Half Bandwidth		Chip Material	Remark
			TYP	MAX		IV (V)	Conditions IF (mA)	IV (mcd)	Conditions IF (mA)	λP (nm)	Conditions IF (mA)	λd (nm)	Conditions IF (mA)		
SML72423C	A: Red	Water clear	1.9	2.5	10	25	20	630	10	620	10	35	10	GaAsP GaP	Cathode common
	B: Green		2.0	2.5		35		560		567		20			
SML72923C	A: Red	Water clear	1.9	2.5	10	25	20	630	10	620	10	35	10	GaAsP GaAsP	Cathode common
	B: Orange		1.9	2.5		25		587		590		10			
SML78423C	A: Amber	Water clear	1.9	2.5	10	25	20	610	10	605	10	35	10	GaAsP GaP	Cathode common
	B: Green		2.0	2.5		35		560		567		10			
SML79423C	A: Orange	Water clear	1.9	2.5	10	25	20	587	10	590	10	33	10	GaAsP GaP	Cathode common
	B: Green		2.0	2.5		35		560		567		10			
SMLS79723C	A: Ultrahigh luminosity orange	Water clear	2.0	2.5	10	150	20	590	10	590	10	15	10	AlGaInP GaP	Cathode common
	B: Yellow		2.0	2.5		40		570		571		10			
SMLU76423C-S	A: Ultrahigh luminosity red	Water clear	2.0	2.5	20	26	3	650	20	639	20	20	20	AlGaInP GaP	Cathode common
	B: Green		2.0	2.5		20		3.8		3		560			
SMLU72423C-S	Ultrahigh luminosity	A: Red	2.0	2.5	20	120	20	635	20	625	20	15	20	AlGaInP AlGaInP	Cathode common
		B: Green	2.2	2.5		30		20		560		567			
SMLU79423C-S	Ultrahigh luminosity	A: Orange	2.0	2.5	10	150	20	590	20	590	10	15	20	AlGaInP AlGaInP	Cathode common
		B: Green	2.2	2.5		30		20		560		567			

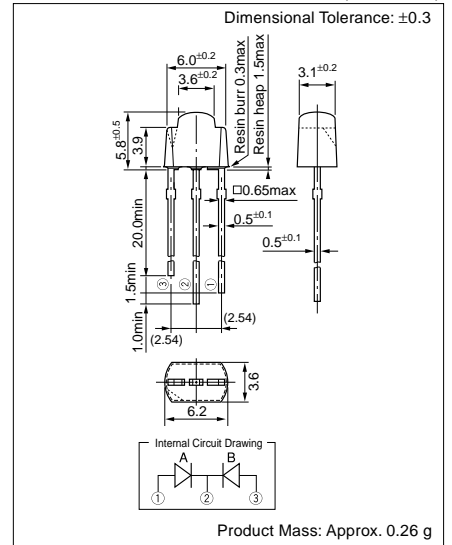
*Mass production in preparation

Directional Characteristics (representative example)



External Dimensions

(Unit: mm)



5-1 Visible Light LEDs

Absolute Maximum Ratings

●Visible Light Unicolor Lamp

Parameter	Unit	Ratings					Conditions
		GaP	GaAsP	GaAlAs	AlGaInP	InGaN	
PD	mW	75			120		
IF	mA	30					
ΔIF	mA/°C	-0.45					25°C or higher
IFP	mA	100			70		f=1kHz, tw≤100μs
VR	V	3		5			
T _{op}	°C	-30 to +85				-30 to +80	
T _{stg}	°C	-30 to +100					

●Visible Light Bicolor Lamp

Parameter	Unit	Ratings					Conditions
		GaP	GaAsP	GaAlAs	AlGaInP	InGaN	
PD	mW	75			120		Same conditions for simultaneous lighting
IF	mA	30					
ΔIF	mA/°C	-0.45					25°C or higher
IFP	mA	100			70		f=1kHz, tw≤100μs
VR	V	4		5			
T _{op}	°C	-30 to +85				-30 to +80	
T _{stg}	°C	-30 to +100					

●Visible Light Unicolor Surface Mount LEDs

Parameter	Unit	Ratings					Conditions
		GaP	GaAsP	GaAlAs	AlGaInP	InGaN	
IF	mA	30			20		
ΔIF	mA/°C	-0.45					25°C or higher
IFP	mA	100 ^{*1}			70 ^{*2}		f=1kHz, tw≤100μs
VR	V	3		5			
T _{op}	°C	-30 to +85				-30 to +80	
T _{stg}	°C	-30 to +100					

*1: 70mA for SEC1005/1007 Series
*2: 50mA for SEC1005/1007 Series

●Visible Light Bicolor Surface Mount LEDs

Parameter	Unit	Ratings		Conditions
		SEC2002/2004		
PD	mW	75 (Same conditions for simultaneous lighting)		
IF	mA	30		
ΔIF	mA/°C	-0.45		25°C or higher
IFP	mA	70		f=1kHz, tw≤100μs
VR	V	4		
T _{op}	°C	-30 to +85		
T _{stg}	°C	-30 to +100		

●Visible Light Three Element Surface Mount LEDs

Parameter	Unit	Ratings		Conditions
		SECT3M02C-S		
		Red	Green/Blue	
PD	mW	75	120	When one chip lights up (same as green/blue for simultaneous lighting)
IF	mA	30		
ΔIF	mA/°C	-0.45		25°C or higher
IFP	mA	70	50	f=1kHz, tw≤100μs
VR	V	5		
T _{op}	°C	-30 to +80		
T _{stg}	°C	-30 to +100		