

Model No.	OST089S01GD- XXXXT8E1A
REV.	C1

## T08 Flat AUTO LED Based on BA9S

### Descriptions:

- Green light source, fast response
- Long life, easy installation
- Voltages available 12VDC
- LED model number: XXXXT8E1A

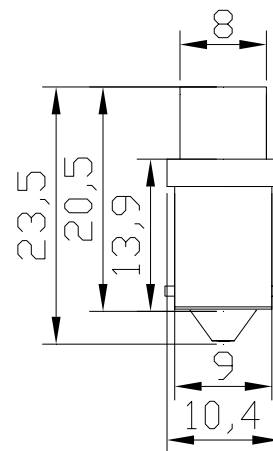
### Features:

- Available in red, green, blue, white and more
- The socket material is use the copper, the appearance is through oxidizing
- Low power consumption
- Energy saving
- Eye protection, no radiation
- Long life

### Application:

- Back up light
- Signal Light

### Product Picture and Dimensions:



Unit:mm



Model No.	OST089S01GD- XXXXT8E1A
REV.	C1

### Device Selection Guide

Module No.	Color	Wavelength (Typ.)	Intensity / Per LED (Typ.)	Overall luminous flux
R5RUT8E1A	Red	625 nm	420mcd	1.0lm
G5DUT8E1A	Green	525 nm	3100mcd	3.5lm
B5YUT8E1A	Blue	470 nm	770mcd	0.6lm
W5YKT8E1A	White	X=0.27,Y=0.28	1500mcd	3.0lm

### Absolute Maximum Ratings(Ta=25 )

Items	Symbol	Values	Units
Operating supply range(DC)	V <sub>dc</sub>	16	V
Input Current (DC)	I <sub>i</sub>	30	mA
Power Dissipation	P <sub>a</sub>	0.48	W
Operating Temperature	T <sub>ope</sub>	-20 ~ +50	DegC
Storage Temperature	T <sub>stg</sub>	-20 ~ +80	DegC

### Typical Performance (Ta=25 )

Items	Symbol	Min.	Typ.	Max.	Units
LED Module Power	P <sub>m</sub>	-	0.24	0.48	W
Input Voltage(DC)	V <sub>i</sub>	-	12	16	V
Product input Current	I <sub>f</sub>	-	20	30	mA
Beam Pattern	BP	-	140	-	Deg
Total diameter of PCB	L <sub>mod.</sub>	-	23.5	-	mm
Net Weight	Wei.	---	1.6	---	g