

DC-AC INVERTER UNIT

PS-M06D12S3-NJ4L-016 (6,5 W DUAL OUTPUTS)

(PRELIMINARY INFORMATION)

DESCRIPTION :

This low profile DC to AC Inverter is developed for dual lamps.
Optimized for **Sharp: LQ084S3DG01**.

APPLICABLE LCD:

- 6.4 to 12 inches double lamp type
- Lamp Voltage 435 Vrms
- Lamp Current 6 mArms
- Lamp Start Up Voltage 1.200 Vrms (Vin : 12 Vdc)



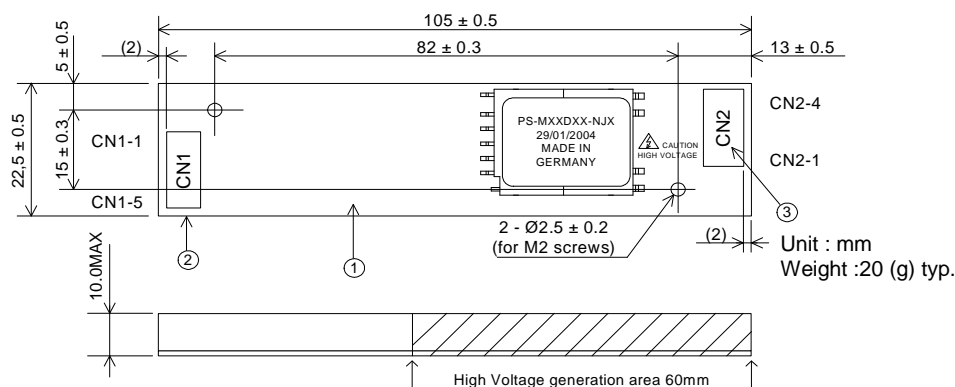
FEATURES :

- Remote ON/OFF
- Options:
 - Ext. PWM-Dimming Function (order code: PS-M06D12S3-EJ4L-016)

TEMPERATURE & HUMDITY :

- Operating Temperature Range 0°C ~ +60°C
- Storage Temperature Range -20°C ~ +85°C
- Humidity 95 %RH max

DIMENSIONS :



Components

No.	Part Discription	Qty.	Material	Note
1	PCB	1	UL94V-0 (FR-4 or CEM-3)	t=1.6mm
2	Connector CN1	1	S5B-PH-SM3	JST or equal
3	Connector CN2	1	SM03(4.0)B-BHS	JST or equal

Input side CN1:

Pin No.	Symbols	Ratings
CN 1-1	Vin	12 Vdc
CN 1-2	GND	
CN 1-3	Ext. PWM	0 ~ 5 Vdc (L activ)
CN 1-4	N.C.	
CN 1-5	Vrmt	0 / 5 Vdc (H activ)

Output side CN2:

Pin No.	Symbols	Ratings
CN 2-1+2	Vhigh	435 Vrms (6 mArms)
CN 2-3	N.C.	-
CN 2-4	Vlow	0 Vdc (Option -1: 2,0 Vdc)

Power Systems – The Power Solution

Web: www.Power-Systems.de
Email: Info@Power-Systems.de

Address: Dörnet 8 ; 74360 Ilsfeld-Auenstein / Germany
Tel. : + 49 / 70 62 / 67 59 - 6
Fax: + 49 / 70 62 / 67 59 - 80

DC-AC INVERTER UNIT

PS-M06D12S3-NJ4L-016 (6,5 W DUAL OUTPUTS)

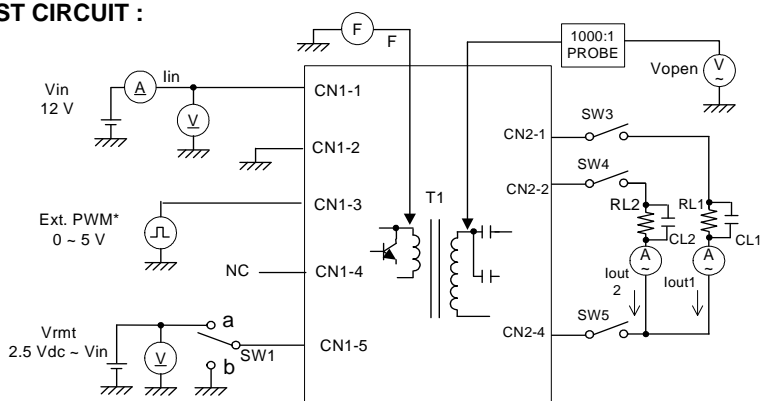
(PRELIMINARY INFORMATION)

ELECTRICAL CHARACTERISTICS :

Parameters	Symbols	Conditions			Specification			Unit	Note
		Vin (V)	Vrmt (V)	Tu (°C)	Min.	Typ.	Max.		
Output Current	Iout1+2	12±0.12	5±0.25	0 ~ +60	5.5	6.0	6.5	m Arms	
Output Current	Iout1+2	12±1.2	5±0.25	0 ~ +60	5.0	6.0	7.0	m Arms	
Input Current	Iin	12±1.2	5±0.25	0 ~ +60	-	0.7	1.2	A dc	
Frequency	F	12±1.2	5±0.25	0 ~ +60	45	55	65	kHz	
Open Circuit Voltage	Vopen	11,4	5±0.25	0 ~ +60	1.200	-	-	Vrms	

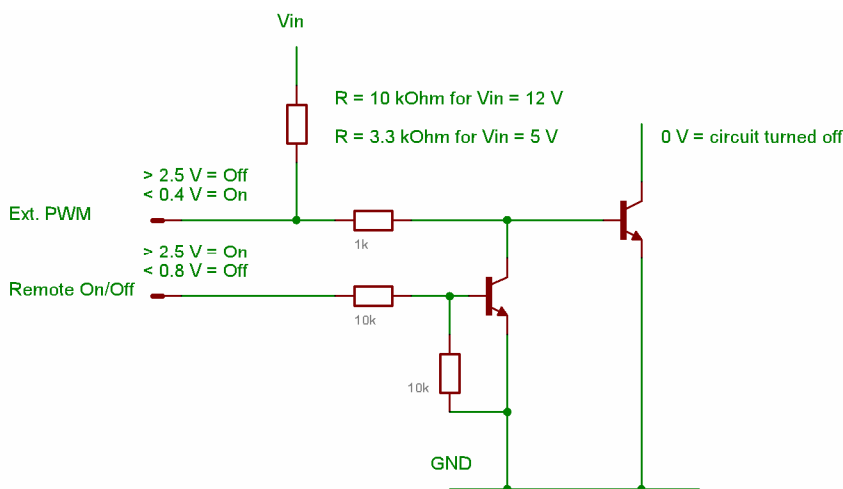
Note 1 : Please keep minimum of 2mm clearance (all directions) between inverter high voltage area as marked on mechanical drawing and any conductors.

TEST CIRCUIT :



*) Only active when Vrmt is 0 Vdc or floating

External PWM-Dimming / Remote ON / OFF Detailed Circuit Diagram :



Power Systems – The Power Solution

Web: www.Power-Systems.de
Email: Info@Power-Systems.de

Address: Dörnet 8 ; 74360 Ilsfeld-Auenstein / Germany
Tel. : + 49 / 70 62 / 67 59 - 6
Fax: + 49 / 70 62 / 67 59 - 80