

Monolithic crystal filter

MQF21.4-1500/01



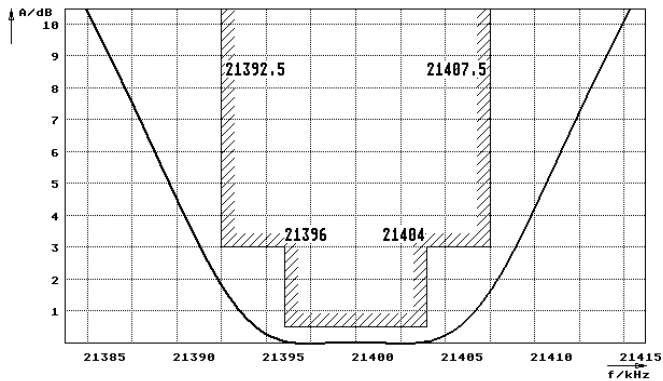
Application

- 2 pol filter
- i.f.- filter
- use in mobile and stationary transceivers

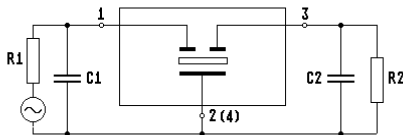
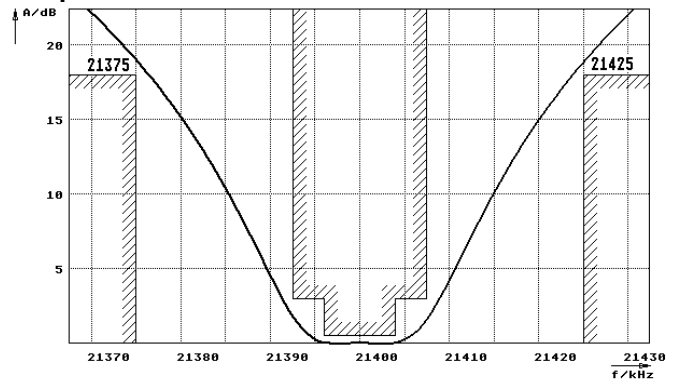
Limiting values		Unit	Value
Nominal frequency	f_0	MHz	21.4
Insertion loss		dB	< 1.5
Pass band at 3.0dB		kHz	$\pm > 7.5$
Ripple in pass band	$f_0 \pm 4$ kHz	dB	< 0.5
Stop band attenuation	$f_0 \pm 25$ kHz	dB	> 18
Alternate attenuation	$f_0 \pm 350 \dots 1000$ kHz	dB	> 35
Spurious responses	$f_0 + 50 \dots 300$ kHz	dB	> 14
Terminating impedance Z			
R1 C1		Ohm/pF	1600 4
R2 C2		Ohm/pF	1600 4
Operating temp. range		°C	-25... +70
Storage temp. range		°C	-45... +85
Environment conditions			according to CF001

Characteristics MQF21.4-1500/01

Pass band



Stop band



- Pin connections:
- 1 Input
 - 2 Ground-Input
 - 3 Output
 - 4 Ground-Output

