

Monolithic crystal filter

MQF 45.0-0750/27

(preliminary specification)



Application

- 4 pol filter
- i.f.- filter
- use in mobile and stationary transceivers

Limiting values		Unit	Value
Center frequency	f_0	MHz	45.0
Insertion loss		dB	≤ 4.5
Pass band at 3.0 dB		kHz	$< \pm 3.75$
Ripple in pass band	$f_0 \pm 2.50$ kHz	dB	≤ 1.0
Stop band attenuation	$f_0 \pm 20$ kHz	dB	≥ 40
Alternate attenuation		dB	> 70 except spurious
Spurious responses	$f_0 + 20$ kHz.....+1 MHz	dB	> 30

Terminating impedance Z

R1 || C1

Ohm/pF 50 || 0

R2 || C2

Ohm/pF 50 || 0

Operating temp. range

°C -25... +85

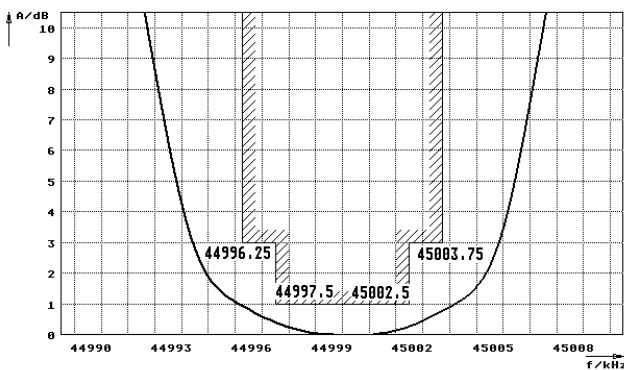
Storage temp. range

°C -55... +85

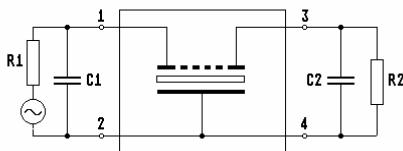
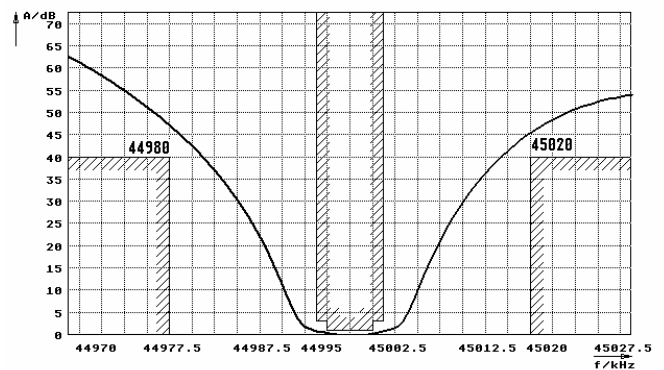
Filters are Pb-free and 2002 / 95 / EC RoHS compliant

Characteristics MQF 45.0-0750/27

Pass band



Stop band



Pin connections:

1	Input
3	Output
All other pins	Ground

