

PLEASE CHECK WWW.MOLEX.COM FOR LATEST PART INFORMATION

Part Number: [0414225001](#)
Status: **Active**
Overview: [flat blade](#)
Description: Crimp Terminal 41422, 14-18 AWG, Reel

Documents:

[Drawing \(PDF\)](#) [RoHS Certificate of Compliance \(PDF\)](#)

General

Product Family	Crimp Terminals
Series	41422
Crimp Quality Equipment	Yes
Overview	flat blade
Product Name	Flat Blade

Physical

Gender	Female
Material - Metal	Brass
Material - Plating Mating	Tin
Material - Plating Termination	Tin
Packaging Type	Reel
Plating min: Mating (µin)	20
Plating min: Mating (µm)	0.50
Plating min: Termination (µin)	20
Plating min: Termination (µm)	0.50
Termination Interface: Style	Crimp or Compression
Wire Insulation Diameter	.79mm (.031") max.
Wire Size AWG	14, 16, 18
Wire Size mm ²	N/A

Material Info

Reference - Drawing Numbers

Sales Drawing [SD-41422-5***](#)

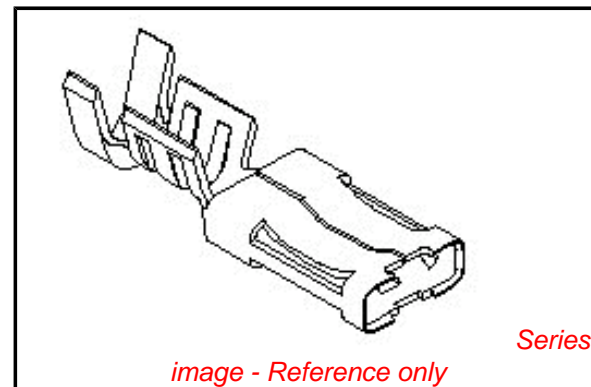


image - Reference only

EU RoHS

**ELV and RoHS
Compliant**
**REACH SVHC
Contains SVHC: No**
**Halogen-Free
Status**

China RoHS



**Need more information on product
environmental compliance?**

Email productcompliance@molex.com
 For a multiple part number RoHS Certificate of Compliance, [click here](#)

Please visit the [Contact Us](#) section for any non-product compliance questions.

Search Parts in this Series

[41422Series](#)

Application Tooling | [FAQ](#)

Tooling specifications and manuals are found by selecting the products below. Crimp Height Specifications are then contained in the Application Tooling Specification document.

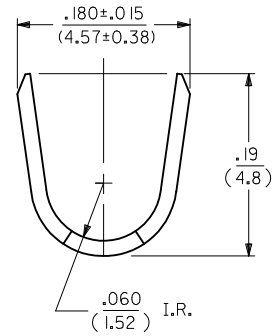
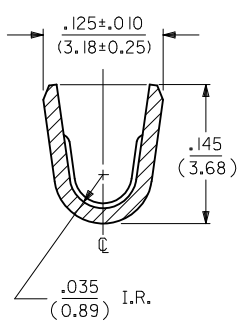
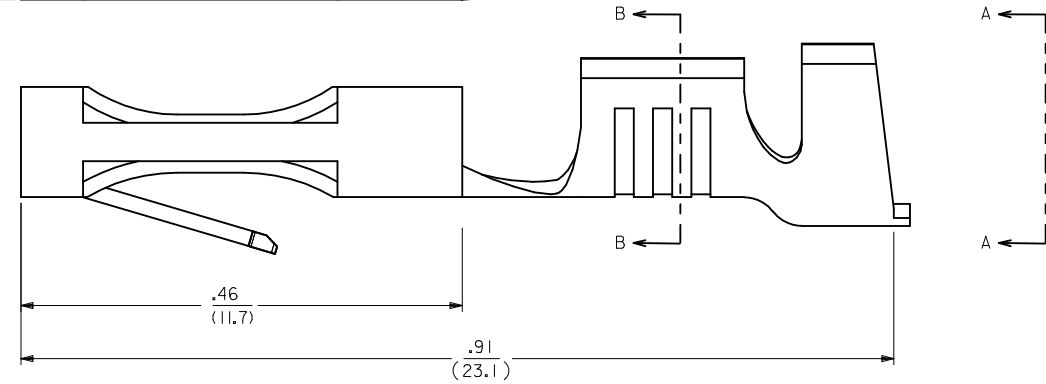
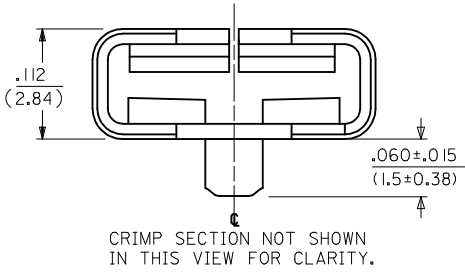
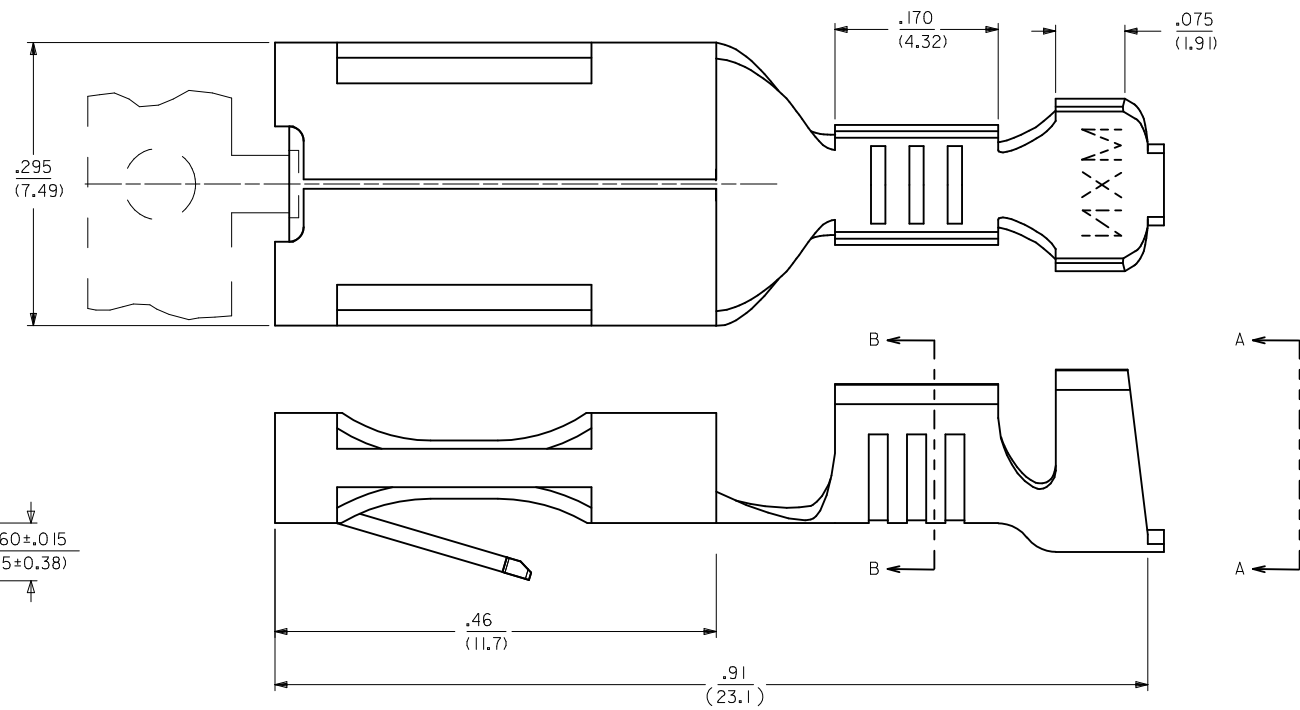
Global

Description	Product #
Mini-Mac™ Applicator	0638821100
Terminator Die	0011402193

ITEM NO.	ENG. NO.
41422-5001	41422-5001

NOTES:

1. MATERIAL: BRASS, ALLOY *C26000, TEMPER SPRING, .016/(.041) THICK
2. FINISH: ES-88-P901, HOT TIN DIP .00002/(0.0005) MIN.
3. PRODUCT SPECIFICATION: NONE
4. IN ANY HOUSING DESIGN USING THIS TERMINAL, ESPECIALLY WHEN LOW INSERTION FORCES ARE EXPECTED, SOME SORT OF LOCKING DEVICE SHOULD BE CONSIDERED.
5. MATES TO .250/(6.35) X .032/(0.81) NOMINAL MALE TAB TERMINAL.
6. CRIMP TO #14 THROUGH #18 AWG. WIRE WITH .031/(0.79) THK. INSULATION.



UPDATED LOCK TAB EC NO: UCP2010-1707 DRW: AELHAG 2010/02/12 CHK: AELHAG 2010/02/22 APPR: FSMITH 2010/02/22	QUALITY SYMBOLS	GENERAL TOLERANCES (UNLESS SPECIFIED)	DIMENSION STYLE	SCALE	DESIGN UNITS	THIRD ANGLE PROJECTION
	▽=0	mm INCH	IN/MM	10:1	INCH	
	▽=0	4 PLACES ± --- ± ---	DRAWN BY DATE	MAB 08/19/94	TERMINAL, PUSH-ON CRIMP	
	▽=0	3 PLACES ± 0.006 ± ---	CHECKED BY DATE	KBP 08/19/94	MOLEX INCORPORATED	
REV	DESCRIPTION	APPROVED BY DATE	RAS 08/19/94	MATERIAL NO.	DOCUMENT NO.	SHEET NO.
C1		ANGULAR ±1/2°	SEE CHART		SD-41422-5***	1 OF 1
DRAFT WHERE APPLICABLE MUST REMAIN WITHIN DIMENSIONS		THIS DRAWING CONTAINS INFORMATION THAT IS PROPRIETARY TO MOLEX INCORPORATED AND SHOULD NOT BE USED WITHOUT WRITTEN PERMISSION				