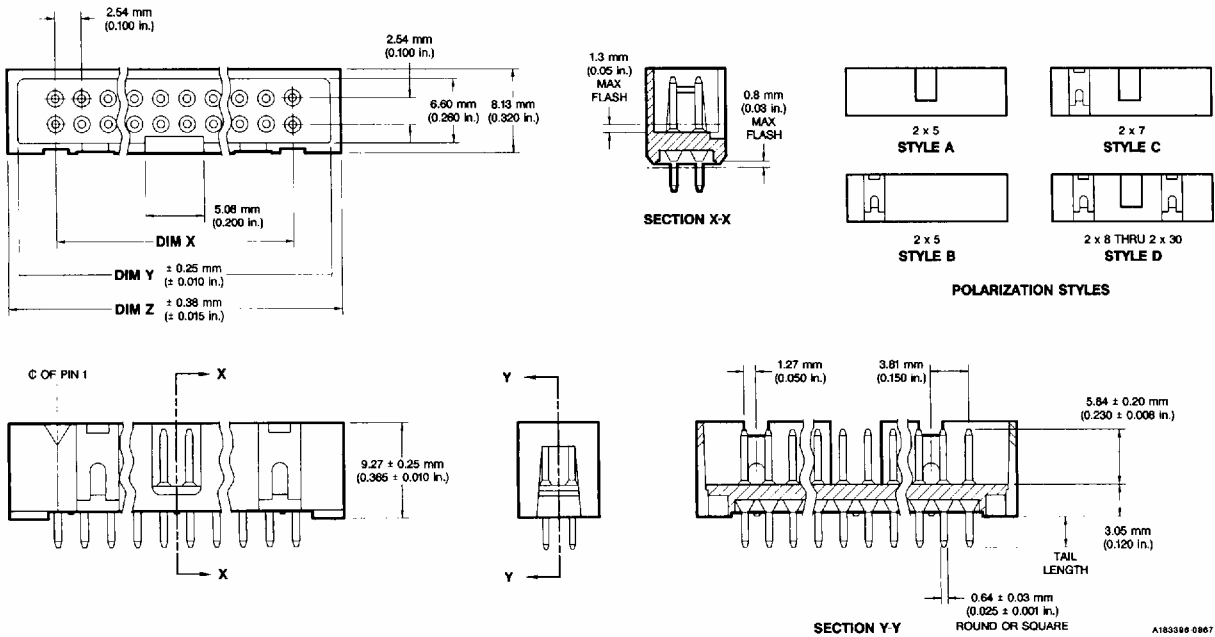


Description
Quickie™ Straight 4-Wall
Slimline Header
End Windows



Ordering Data
Base Number 88880

Base number - - **XXX** Dash number specifies number of positions, polarization style, tail length, and plating type

Number of Positions	Polarization Style (see above illustrations)	Solder Tail Length		Dash Numbers		Dimensions		
		mm	in.	0.76 µm (30 µin.) gold	0.76 µm (30 µin.) GXT™	X	Y	Z
2 x 5	A	2.67	0.105	-001	-066	10.16 mm (0.400 in.)	18.29 mm (0.720 in.)	19.81 mm (0.780 in.)
		3.81	0.150	-002	-049			
2 x 7	C	2.67	0.105	-037	-068	15.24 mm (0.600 in.)	23.37 mm (0.920 in.)	24.89 mm (0.980 in.)
		3.81	0.150	-038	-055			
2 x 8	D	2.67	0.105	-043	-070	17.78 mm (0.700 in.)	25.91 mm (1.020 in.)	27.43 mm (1.080 in.)
		3.81	0.150	-044	-056			
2 x 10	D	2.67	0.105	-007	-072	22.86 mm (0.900 in.)	30.99 mm (1.220 in.)	32.51 mm (1.280 in.)
		3.81	0.150	-008	-050			
2 x 12	D	2.67	0.105	-218	-219	27.94 mm (1.100 in.)	36.07 mm (1.420 in.)	37.59 mm (1.480 in.)
		3.81	0.150	-222	-223			
2 x 13	D	2.67	0.105	-013	-074	30.48 mm (1.200 in.)	38.61 mm (1.520 in.)	40.13 mm (1.580 in.)
		3.81	0.150	-014	-051			
2 x 15	D	2.67	0.105	-230	-231	35.56 mm (1.400 in.)	43.69 mm (1.720 in.)	45.21 mm (1.780 in.)
		3.81	0.150	-234	-235			
2 x 17	D	2.67	0.105	-019	-076	40.64 mm (1.600 in.)	48.77 mm (1.920 in.)	50.29 mm (1.980 in.)
		3.81	0.150	-020	-052			
2 x 20	D	2.67	0.105	-025	-078	48.26 mm (1.900 in.)	56.39 mm (2.220 in.)	57.91 mm (2.280 in.)
		3.81	0.150	-026	-053			
2 x 22	D	2.67	0.105	-242	-243	53.34 mm (2.100 in.)	61.47 mm (2.420 in.)	62.99 mm (2.480 in.)
		3.81	0.150	-246	-247			
2 x 25	D	2.67	0.105	-031	-080	60.96 mm (2.400 in.)	69.09 mm (2.720 in.)	70.61 mm (2.780 in.)
		3.81	0.150	-032	-054			
2 x 30	D	2.67	0.105	-057	-063	73.66 mm (2.900 in.)	81.79 mm (3.220 in.)	83.31 mm (3.280 in.)
		3.81	0.150	-058	-064			

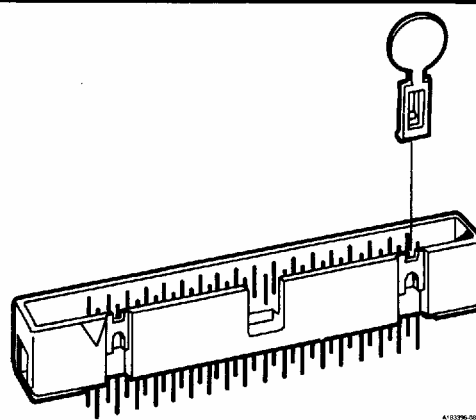
Ordering data shown is for our standard product offering. For non-standard or custom products, contact your authorized Berg Electronics representative.

For dual polarization, order dual-polarization key P/N 66423-002.

Shrouded Headers

2.54 x 2.54 mm (0.100 x 0.100 in.)
Centerlines

Quickie™ IDC Straight 4-Wall Slimline Header End Windows



Features

- 2-row: 10 through 60 total positions.
- Applicable to pc board thicknesses 1.58 mm (0.062 in.) and 3.18 mm (0.125 in.).
- Molded-in pins assure positive retention in housing and prevent flux contamination.
- Standard plating available in 0.76 µm (30 µin.) gold and 0.76 µm (30 µin.) GXT™ (palladium-nickel alloy with gold flash).
- Shrouding protects pins in unmated condition and prevents misalignment.
- Standoffs for cleaning purposes.
- Round pins use smaller through-holes, leaving more room to run circuitry.
- End windows function as a latching system when used with the Quickie™ III receptacle latching strain relief.
- Requires minimum of space on pc board allowing dense packaging.

Options

- Retentive pin feature holds the header onto the board during soldering process.
- Pins available in round or square configurations and in varying tail lengths.
- Available in other plating types.
- High temperature, I/R compatible plastic configurations available upon request.


Mating Data


Berg Electronics Products	Page
▪ All Quickie™ receptacles	23-4 to 23-9
▪ Select discrete wiring mini-latch housings Series 65043	13-16
and 65846	13-18

Specifications

Compatible with MIL-C-83503.

Approvals and Certifications

 File no. E66906

 File no. LR46923

Accessories

See page 23-50 for dual-polarization key data.

Technical Data

Materials

- Housing material Glass-filled thermoplastic polyester (UL 94 V-0)
 - Color Blue
 - Applicable soldering processes Wave
- Pin Phosphor-bronze

Plating

- Underplate 1.27 µm (30 µin.) min nickel
- Finish 0.76 µm (30 µin.) min gold or 0.76 µm (30 µin.) min GXT™

Electrical Performance

- Insulation resistance 1 x 10⁵ MΩ min
- Withstanding voltage >500 V ac rms (sea level)
- Current rating 3 amp continuous

Mechanical Performance

- Insertion force per contact Dependent upon
- Normal force per contact mating receptacles;
- Withdrawal force per contact refer to mating receptacle
- Contact retention force data for this
- Durability (mating cycles) information

Operating Environment

- Temperature range -65°C to +125°C

Packaging

- Trays

Customer Support Materials

Description	Order No.	Description	Order No.
Customer Product Drawings	By Part Number	Product Sample	Upon Request
Product Specifications	BUS-12-082		