



V-Bite® PC Edge Mount

The V-Bite® is an industry award winning design PCB connector with all the advantages a designer could want. It edge mounts to the board which offers the lowest profile and utilizes very little PCB real estate. It lends itself to surface mount and through-hole soldering techniques. There are versions for IR and convection reflow soldering. Because the connector locks into place both above and below the PCB it disperses rotational torque relief to the board and not the solder points. The V-Bite® design offers the lowest VSWR ratings due to the straight through-put contact design. No right angles for reflection. Available in 50 and 75 ohm, threaded and non-threaded. Other options for PCB thickness available. Other interfaces available. See "F", BNC Twin and TNC sections.

Part Number	Description	Imp	Contact	Fig. No.
361V504ER	BNC Jack W/ Teflon For Reflow Solder	50Ω	Phos./Gold	39A
361V504ET	BNC Threaded Jack W/ Teflon For Reflow Solder	50Ω	Phos./Gold	39
361V504EFT	BNC Threaded Jack W/ Teflon Insulator/Flange	50Ω	Phos./Gold	39B
361V509E	BNC Jack W/ Polyethylene Insulator	50Ω	Phos./Tin	39A
361V509ET	BNC Threaded Jack W/ Polyethylene Insulator	50Ω	Phos./Tin	39
361V509EFT	BNC Threaded Jack W/ Polyethylene Insulator /Flange	50Ω	Phos./Tin	39B
361V704ER	BNC Jack W/ Teflon For Reflow Solder	75Ω	Phos./Gold	39A
361V704ET	BNC Threaded Jack W/ Teflon For Reflow Solder	75Ω	Phos./Gold	39
361V704EFT	BNC Threaded Jack W/ Teflon Insulator/Flange	75Ω	Phos./Gold	39B
361V709E	BNC Jack W/ Polyethylene Insulator	75Ω	Phos./Gold	39A
361V709ET	BNC Threaded Jack W/ Polyethylene Insulator	75Ω	Phos./Gold	39
361KNT	Knurled nut (361 series)	NA	---	---
3M61V704	Mini-BNC Jack W/Teflon for Reflow	75Ω	Phos./Gold	---
461V504E	Twin-BNC Jack W/ Teflon For Reflow Solder	75Ω	Phos./Gold	***
561V504E	TNC Jack W/ Teflon For Reflow Solder	50Ω	Phos./Gold	***
861V509E	F type Edge Mount Jack (RG59)	*NCI	Phos./Gold	39C
861V509ER	F type Edge Mount Jack w/ TFE Insul. for Reflow (RG59)	*NCI	Brass./Gold	39C
861V509ER6	F type Edge Mount Jack w/ TFE Insul. for Reflow (RG6, RG59)	75Ω	Brass./Gold	39C
	(* Non constant impedance) (** Also available in Twin BNC and TNC)			



Low Profile .270 High FMS

Anti Rotational

VSWR 1.15:1

Patented V-Bite® Snaps Into PCB

Surface Mount Center Contact

Pick & Place Version Available



Fig. 39

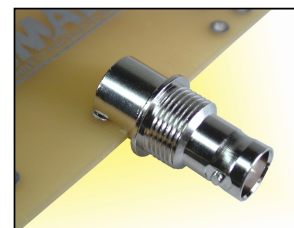
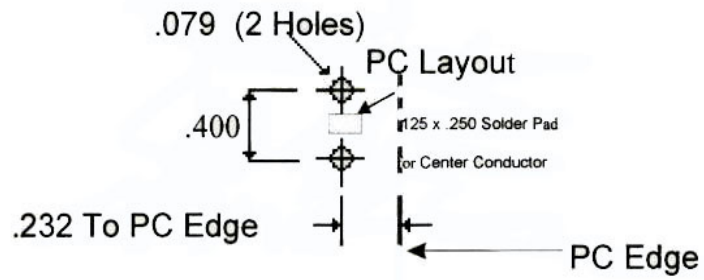


Fig. 39B



Fig. 39C



2272

[Back to Index](#)