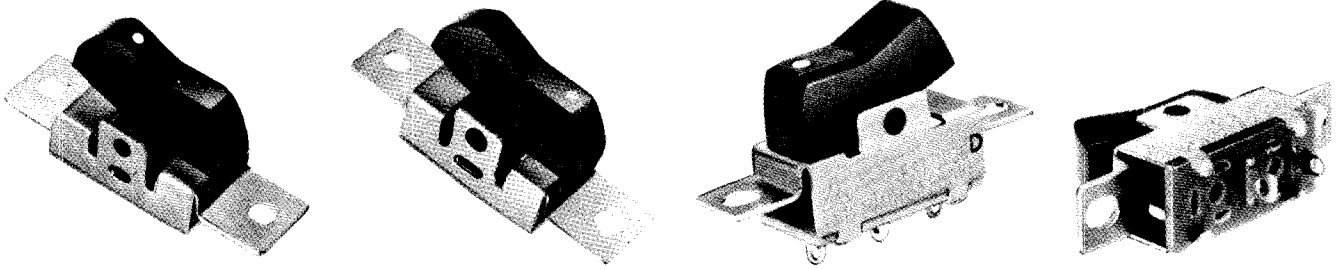


UL Listed Rocker Switches

EST-1017, 1030

■ UL Listed File No. E36636



EST-1017

EST-1030

■ Circuitry

	DPDT	DPST	SPDT	SPST
Part No.	EST-1017DA	EST-1017A	EST-1030D	EST-1030

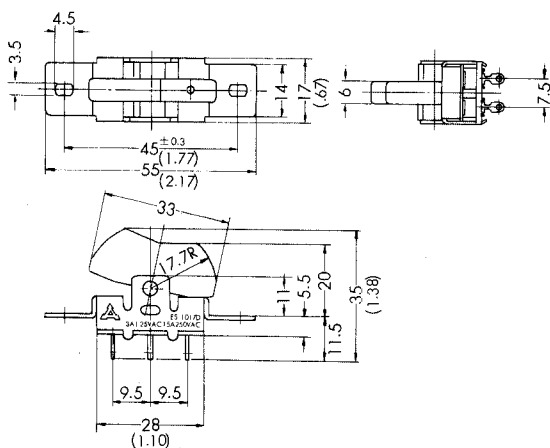
Specifications

Mechanical Characteristics	Lever Strength	To withstand 2kg push applied to the rocker arm
	Operating Force	700~1,400g (EST-1017), 300~1,000g(EST-1030)
Electrical Characteristics	Contact Resistance	25mΩ max. at 1A DC
	Dielectric Strength	1,000VAC (50~60Hz) for 1 minute
	Insulation Resistance	100MΩ min. at 500VDC
Rating		3A 125VAC, 1.5A 250VAC

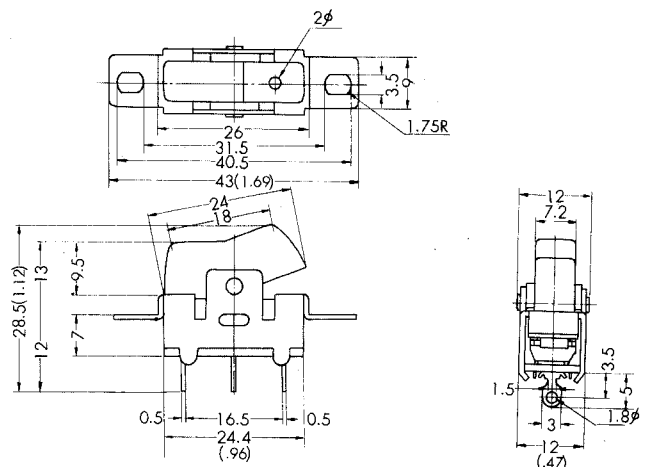
Standard Packing

EST-1030	400 pcs., 0.9 cft., 5 kg (12 lbs)
EST-1030D	1,600 pcs., 2.6 cft., 18 kg (40 lbs)
EST-1017	400 pcs., 1.5 cft., 7 kg (16 lbs)

Dimensions



EST-1017



EST-1030