

**PLEASE CHECK WWW.MOLEX.COM FOR LATEST PART INFORMATION**

**Part Number:** [0930034220](#)  
**Status:** **Active**  
**Overview:** [rast 5 connector system](#)  
**Description:** 5.00mm (.197") Pitch Appli-Mate RAST 5 Header, Right Angle, 7 Circuits, Reference K01 Silver (Ag), Glow Wire Compatible

**Documents:**

[Drawing \(PDF\)](#) [RoHS Certificate of Compliance \(PDF\)](#)

**General**

|                |   |
|----------------|---|
| Product Family | PCB Headers                             |
| Series         | <a href="#">93003</a>                   |
| Application    | Wire-to-Board                           |
| Overview       | <a href="#">rast 5 connector system</a> |
| Product Name   | RAST 5                                  |

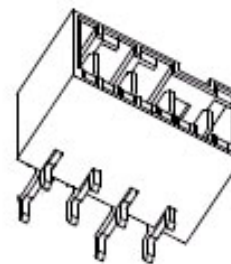
**Physical**

|                                |                |
|--------------------------------|----------------|
| Breakaway                      | No             |
| Circuits (Loaded)              | 7              |
| Circuits (maximum)             | 7              |
| Color - Resin                  | Natural        |
| Durability (mating cycles max) | 10             |
| First Mate / Last Break        | No             |
| Glow-Wire Compliant            | Yes            |
| Guide to Mating Part           | No             |
| Keying to Mating Part          | Yes            |
| Lock to Mating Part            | No             |
| Material - Metal               | Brass          |
| Material - Plating Mating      | Silver         |
| Material - Resin               | Nylon          |
| Number of Rows                 | 1              |
| Orientation                    | Right Angle    |
| PC Tail Length (in)            | 0.138 In       |
| PC Tail Length (mm)            | 3.50 mm        |
| PCB Locator                    | Yes            |
| PCB Retention                  | None           |
| PCB Thickness Recommended (in) | 0.055 In       |
| PCB Thickness Recommended (mm) | 1.40 mm        |
| Packaging Type                 | Bag            |
| Pitch - Mating Interface (in)  | 0.197 In       |
| Pitch - Mating Interface (mm)  | 5.00 mm        |
| Plating min: Mating (µin)      | 80             |
| Plating min: Mating (µm)       | 2              |
| Polarized to PCB               | Yes            |
| Robotic Placement              | None           |
| Shrouded                       | Fully          |
| Stackable                      | Yes            |
| Surface Mount Compatible (SMC) | No             |
| Temperature Range - Operating  | -20°C to +85°C |
| Termination Interface: Style   | Through Hole   |

**Electrical**

|                               |         |
|-------------------------------|---------|
| Current - Maximum per Contact | 16A     |
| Voltage - Maximum             | 250V AC |

**Material Info**



*image - Reference only*

*Series*

**EU RoHS**

**ELV and RoHS  
Compliant**  
**REACH SVHC  
Not Reviewed**  
**Halogen-Free  
Status  
Not Reviewed**

**China RoHS**



**Need more information on product  
environmental compliance?**

Email [productcompliance@molex.com](mailto:productcompliance@molex.com)  
 For a multiple part number RoHS Certificate of Compliance, [click here](#)

Please visit the [Contact Us](#) section for any non-product compliance questions.

**Search Parts in this Series**  
[93003Series](#)

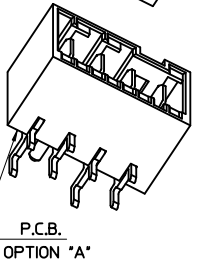
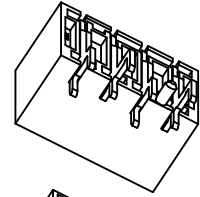
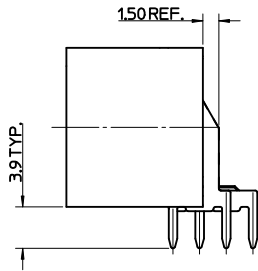
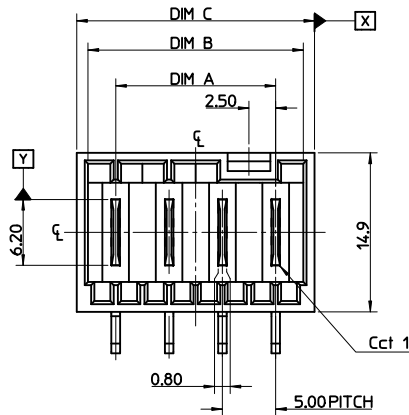
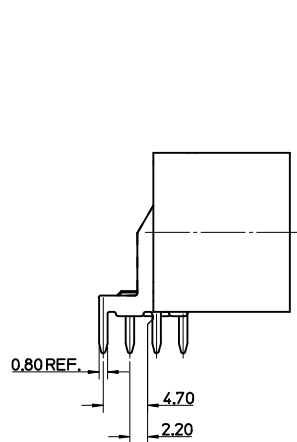
**Reference - Drawing Numbers**

Packaging Specification  
Sales Drawing

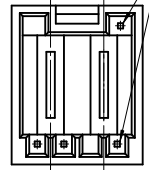
PK-90858-001  
SD-93003-001

This document was generated on 05/26/2010

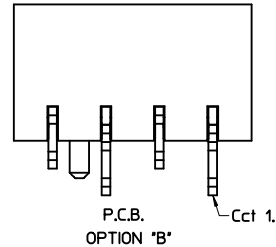
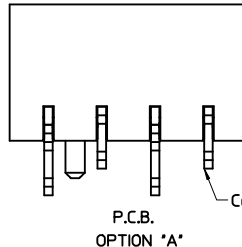
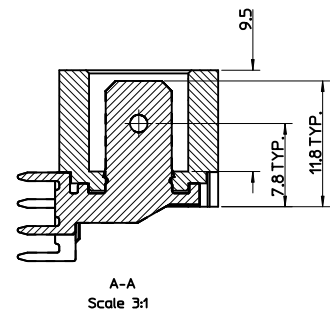
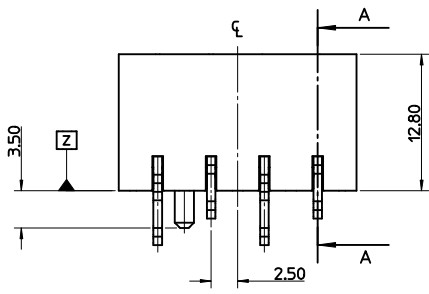
**PLEASE CHECK [WWW.MOLEX.COM](http://WWW.MOLEX.COM) FOR LATEST PART INFORMATION**



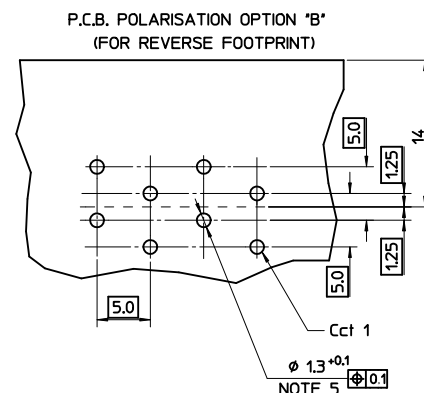
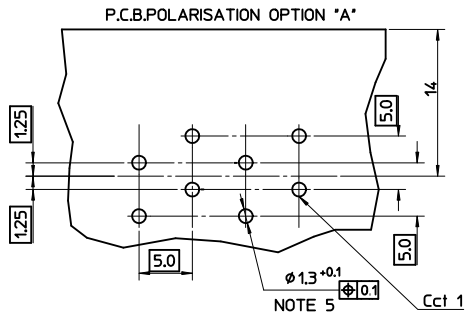
HOLES ON SOME TOOLED VERSIONS



| CCT | DIM A | DIM B | DIM C | TOL     |
|-----|-------|-------|-------|---------|
| 2   | 5.00  | 10.20 | 12.30 | +/-0.30 |
| 3   | 10.00 | 15.20 | 17.30 |         |
| 4   | 15.00 | 20.20 | 22.30 |         |
| 5   | 20.00 | 25.20 | 27.30 |         |
| 6   | 25.00 | 30.20 | 32.30 |         |
| 7   | 30.00 | 35.20 | 37.30 |         |
| 8   | 35.00 | 40.20 | 42.30 |         |
| 9   | 40.00 | 45.20 | 47.30 |         |
| 10  | 45.00 | 50.20 | 52.30 |         |
| 11  | 50.00 | 55.20 | 57.30 |         |
| 12  | 55.00 | 60.20 | 62.30 |         |



RECOMMENDED PCB LAYOUT

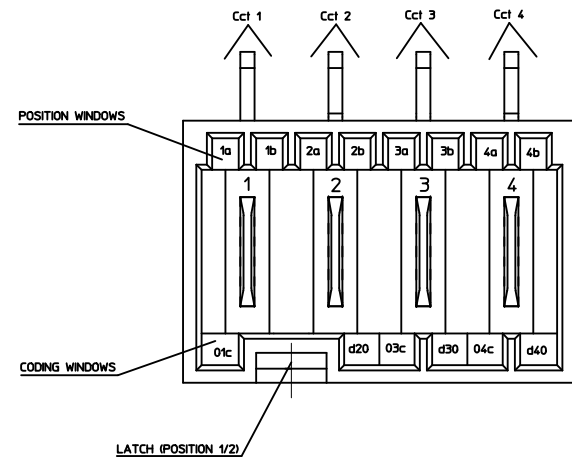


- NOTES:
- MATERIAL:  
HOUSING: PA 66, UL94 V-0 750°C GWT NO FLAME  
TERMINAL: BRASS 0.80 REF. THICK  
PLATING: OPTIONAL (SEE CHARTS SHEETS 2-7)  
5µm TIN OVER  
2.5µm NICKEL ALLOVER  
SELECTIVE SILVER  
2µm SILVER OVER  
3-5µm TIN OVER  
2.5µm NICKEL ALLOVER

- PRODUCT CONFORMS TO SPECIFICATION PS-99020-0037/39
- MATES WITH MOLEX 91338, 90833, 90835, 91777, 91778, 91954, 92000 & 91779
- PARTS PACKAGED LOOSE IN PLASTIC BAGS
- PLATED THRU HOLE
- RECOMMENDED PCB THICKNESS: 1.4±0.1mm.
- PCB VIEW IS FROM SOLDER SIDE

| REV                      | DESCRIPTION               | QUALITY SYMBOLS | GENERAL TOLERANCES (UNLESS SPECIFIED)   |      | DIMENSION STYLE | SCALE        | DESIGN UNITS | THIRD ANGLE PROJECTION           |   |
|--------------------------|---------------------------|-----------------|---|------|-----------------|--------------|--------------|----------------------------------|---|
|                          |                           |                 | mm  | INCH | MM ONLY         | 1:1          | METRIC       | ⊙                                | □ |
| MOULD TOOLING CHANGE     | EC NO: E2010-0370         | ▽=0             | 4 PLACES ±---   | ±--- | DRAWN BY        | DATE         | TITLE        | RAST 5 R.A. HDR<br>PA 66 HOUSING |   |
| DRWN:BRUTTLE 2010/05/17  | CHKD:T.TOURISH 2006/10/10 | ▽=0             | 3 PLACES ±---   | ±--- | B. RUTTLE       | 2006/10/10   |              |                                  |   |
| APPR:BMAGUIRE 2010/06/08 |                           |                 | 2 PLACES ±0.1   | ±--- | CHECKED BY      | DATE         |              | Molex MOLEX INCORPORATED         |   |
|                          |                           |                 | 1 PLACE ±0.2  | ±--- | T. TOURISH      | 2006/10/10   |              |                                  |   |
|                          |                           |                 | ANGULAR ± 2°  |      | APPROVED BY     | DATE         |              | SD-93003-001                     |   |
|                          |                           |                 | DRAFT WHERE APPLICABLE MUST REMAIN WITHIN DIMENSIONS  |      | BMAGUIRE        | 2010/05/28   |              |                                  |   |
|                          |                           |                 | SEE SHEETS 2 TO 7   |      | MATERIAL NO.    | DOCUMENT NO. |              | SHEET NO. 1 OF 5                 |   |
|                          |                           |                 | THIS DRAWING CONTAINS INFORMATION THAT IS PROPRIETARY TO MOLEX INCORPORATED AND SHOULD NOT BE USED WITHOUT WRITTEN PERMISSION |      | SIZE            |              |              |                                  |   |

| 2 CIRCUIT      |                        | SEE CODE DESIGNATION TABLE FOR NUMBERING FORMAT WHEN ADDING NEW PART NUMBERS |                       |                |                           |     |                   | P.C.B. POLARISATION OPTION. |
|----------------|------------------------|--|-----------------------|----------------|---------------------------|-----|-------------------|-----------------------------|
| PART NO. (TIN) | TERMINAL VOID POSITION | UNBLOCKED POSITION KEYS  | UNBLOCKED CODING KEYS | LATCH POSITION | CONFIGURATION (SEE NOTES) | REF | PART NO. (SILVER) |                             |
| 93003-0003     | NONE                   | 1b 2a  | 01c d20               | 1/2            |                           | K01 | 93003-0499        | A                           |
| 93003-0046     | NONE                   | 1a 2b  | 01c                   | 1/2            |                           | K02 | 93003-0498        | A                           |
| 93003-0026     | NONE                   | 1b 2b  | 01c                   | 1/2            |                           | K09 | 93003-0488        | A                           |
| 93003-0018     | NONE                   | 2a   | 01c, d20              | 1/2            |                           | K03 | 93003-0495        | A                           |
| 93003-0021     | NONE                   | 1b   | 01c, d20              | 1/2            |                           | K16 | 93003-0492        | A                           |
| 93003-0022     | NONE                   | 1a 2b  | NONE                  | 1/2            |                           | K06 | 93003-0491        | A                           |
| 93003-0019     | NONE                   | 1a 2b  | d20                   | 1/2            |                           | K05 | 93003-0478        | A                           |
| 93003-0058     | NONE                   | 2b   | NONE                  | 1/2            |                           | K11 | 93003-0476        | A                           |
| 93003-0029     | NONE                   | 1a 1b  | d20                   | 1/2            |                           | K13 | 93003-0486        | A                           |
| 93003-0030     | NONE                   | 2a 2b  | NONE                  | 1/2            |                           | K31 | 93003-0485        | A                           |
| 93003-0059     | NONE                   | 2b   | d20                   | 1/2            |                           | K38 | 93003-0475        | A                           |
| 93003-0060     | NONE                   | 1a 2a  | 01c d20               | 1/2            |                           | K44 | 93003-0474        | A                           |
| 93003-0061     | NONE                   | 1a 1b  | NONE                  | 1/2            |                           | K40 | 93003-0473        | A                           |
| 93003-0020     | NONE                   | 1a 1b  | 01c                   | 1/2            |                           | K04 | 93003-0493        | A                           |
| 93003-0062     | NONE                   | 2b   | 01c d20               | 1/2            |                           | K15 | 93003-0472        | A                           |
| 93003-0057     | NONE                   | 1a   | 01c d20               | 1/2            |                           | K12 | 93003-0477        | A                           |
| 93003-0009     | NONE                   | 1a 2a  | 01c                   | 1/2            |                           | K10 | 93003-0496        | A                           |
| 93003-0049     | NONE                   | ALL  | d20                   | 1/2            |                           | K34 | 93003-0481        | A                           |
| 93003-0056     | NONE                   | 1b 2a 2b   | d20                   | 1/2            |                           | K07 | 93003-0479        | A                           |
| 93003-0063     | NONE                   | 1b 2a  | 01c d20               | 1/2            |                           | K01 | 93003-0471        | B                           |
| 93003-0064     | NONE                   | ALL  | ALL                   | 1/2            |                           | K00 | 93003-0470        | A                           |
|                |                        |  |                       |                |                           |     |                   |                             |
|                |                        |  |                       |                |                           |     |                   |                             |



KEYING, CODING & LATCH POSITION  
(4CCT EXAMPLE SHOWN)  
VIEW INMATING DIRECTION

|  |  |                 |   |                     |                         |                        |                                  |           |
|--|--|-----------------|---|---------------------|-------------------------|------------------------|----------------------------------|-----------|
| SEE SHEET 1  | EC NO: TDRWNBRTTLE 2010/05/17<br>CHKD: T.TOURISH 2006/10/10<br>APPR: BMAGUIRE 2010/06/08<br>DESCRIPTION: | QUALITY SYMBOLS | GENERAL TOLERANCES (UNLESS SPECIFIED)   | SCALE 1:1           | DESIGN UNITS METRIC     | THIRD ANGLE PROJECTION | REVISE ON CAD ONLY               |           |
|  |  | ▽ - 0           | 4 PLACES ± --- ± ---  | mm INCH             | DIMENSION STYLE MM ONLY | TITLE                  | RAST 5 R.A. HDR<br>PA 66 HOUSING |           |
|  |  | ▽ - 0           | 3 PLACES ± --- ± ---  |                     | DRAWN BY DATE           |                        |                                  |           |
|  |  |                 | 2 PLACES ± 0.1 ± ---  |                     | B.RUTTLE 2006/10/10     | CHECKED BY DATE        |                                  |           |
|  | 1 PLACE ± 0.2 ± ---  |                 | T.TOURISH 2006/10/10  | APPROVED BY DATE    |                         | MATERIAL NO.           | DOCUMENT NO.                     | SHEET NO. |
|  |  | ANGULAR ± 2 °   |   | BMAGUIRE 2010/05/28 | SEE CHART               | SD-93003-001           | 2 OF 5                           | A1        |
| DRAFT WHERE APPLICABLE MUST REMAIN WITHIN DIMENSIONS |  |                 | THIS DRAWING CONTAINS INFORMATION THAT IS PROPRIETARY TO MOLEX INCORPORATED AND SHOULD NOT BE USED WITHOUT WRITTEN PERMISSION |                     |                         |                        |                                  |           |

| 3 CIRCUIT         |                           |                            |                          |                   |                              |     | SEE CODE DESIGNATION TABLE FOR NUMBERING<br>FORMAT WHEN ADDING NEW PART NUMBERS |   |  | P.C.B.<br>POLARISATION<br>OPTION |
|-------------------|---------------------------|----------------------------|--------------------------|-------------------|------------------------------|-----|---|---|--|----------------------------------|
| PART NO.<br>(TIN) | TERMINAL VOID<br>POSITION | UNBLOCKED<br>POSITION KEYS | UNBLOCKED<br>CODING KEYS | LATCH<br>POSITION | CONFIGURATION<br>(SEE NOTES) | REF | PART NO.<br>(SILVER)  |   |  |                                  |
| 93003-0502        | NONE                      | 1b                         | 01c, d20                 | 1/2               |                              | K01 | 93003-1249  | A |  |                                  |
| 93003-0508        | NONE                      | 1a                         | 03c                      | 1/2               |                              | K04 | 93003-1248  | A |  |                                  |
| 93003-0528        | NONE                      | 1a 1b                      | d30                      | 1/2               |                              | K05 | 93003-1247  | A |  |                                  |
| 93003-0512        | NONE                      | 1a 3b                      | 01c                      | 1/2               |                              | K06 | 93003-1246  | A |  |                                  |
| 93003-0513        | NONE                      | 1b                         | d20 03c                  | 1/2               |                              | K09 | 93003-1245  | A |  |                                  |
| 93003-0529        | NONE                      | 1b 2a 2b                   | d30                      | 1/2               |                              | K33 | 93003-1244  | A |  |                                  |
| 93003-0530        | NONE                      | 2b                         | d20                      | 1/2               |                              | K56 | 93003-1243  | A |  |                                  |
| 93003-0526        | NONE                      | ALL                        | d10 d30                  | 2/3               |                              | K38 | 93003-1242  | A |  |                                  |
| 93003-0527        | NONE                      | ALL                        | d20                      | 1/2               |                              | K40 | 93003-1241  | A |  |                                  |
| 93003-0531        | NONE                      | ALL                        | ALL                      | 1/2               |                              | K00 | 93003-1240  | A |  |                                  |
|                   |                           |                            |                          |                   |                              |     |   |   |  |                                  |
|                   |                           |                            |                          |                   |                              |     |   |   |  |                                  |
|                   |                           |                            |                          |                   |                              |     |   |   |  |                                  |
|                   |                           |                            |                          |                   |                              |     |   |   |  |                                  |
|                   |                           |                            |                          |                   |                              |     |   |   |  |                                  |
|                   |                           |                            |                          |                   |                              |     |   |   |  |                                  |

| 4 CIRCUIT         |                           |                            |                          |                   |                              |     | SEE CODE DESIGNATION TABLE FOR NUMBERING<br>FORMAT WHEN ADDING NEW PART NUMBERS |   |  | P.C.B.<br>POLARISATION<br>OPTION |
|-------------------|---------------------------|----------------------------|--------------------------|-------------------|------------------------------|-----|---|---|--|----------------------------------|
| PART NO.<br>(TIN) | TERMINAL VOID<br>POSITION | UNBLOCKED<br>POSITION KEYS | UNBLOCKED<br>CODING KEYS | LATCH<br>POSITION | CONFIGURATION<br>(SEE NOTES) | REF | PART NO.<br>(SILVER)  |   |  |                                  |
| 93003-1254        | NONE                      | 1b                         | 03c d40                  | 1/2 3/4           |                              | K01 | 93003-1999  | A |  |                                  |
| 93003-1264        | NONE                      | 1a 4b                      | d40                      | 1/2 3/4           |                              | K03 | 93003-1997  | A |  |                                  |
| 93003-1265        | NONE                      | 2a 4b                      | d20                      | 1/2 3/4           |                              | K07 | 93003-1996  | A |  |                                  |
| 93003-1267        | NONE                      | 1b 2a 3a 4b                | 01c d40                  | 1/2 3/4           |                              | K37 | 93003-1994  | A |  |                                  |
| 93003-1278        | NONE                      | 1a 2b 4b                   | 01c 03c d40              | 1/2 3/4           |                              | K44 | 93003-1988  | A |  |                                  |
| 93003-1279        | NONE                      | 1a 3a 3b                   | 01c d20 d40              | 1/2 3/4           |                              | K32 | 93003-1987  | A |  |                                  |
| 93003-1280        | NONE                      | 1b 2a 4b                   | 01c d20 03c              | 1/2 3/4           |                              | K61 | 93003-1986  | A |  |                                  |
| 93003-1281        | NONE                      | 1a 3a                      | d40                      | 1/2 3/4           |                              | K06 | 93003-1985  | A |  |                                  |
| 93003-1282        | NONE                      | 1a 2b<br>3b 4a             | 01c 03c d40              | 1/2 3/4           |                              | K65 | 93003-1984  | A |  |                                  |
| 93003-1266        | NONE                      | 2a 4b                      | d20 03c                  | 1/2 3/4           |                              | K30 | 93003-1995  | A |  |                                  |
| 93003-1276        | NONE                      | 3b                         | d30                      | 2/3               |                              | K04 | 93003-1989  | A |  |                                  |
| 93003-1283        | NONE                      | ALL                        | ALL                      | 1/2 3/4           |                              | K00 | 93003-1983  | A |  |                                  |
| 93003-1284        | NONE                      | 1b                         | 03c                      | 1/2 3/4           |                              | N/A | 93003-1982  | A |  |                                  |
|                   |                           |                            |                          |                   |                              |     |   |   |  |                                  |
|                   |                           |                            |                          |                   |                              |     |   |   |  |                                  |
|                   |                           |                            |                          |                   |                              |     |   |   |  |                                  |
|                   |                           |                            |                          |                   |                              |     |   |   |  |                                  |
|                   |                           |                            |                          |                   |                              |     |   |   |  |                                  |

|  |  |   |   |  |                                     |                    |  |
|--|--|---|---|--|-------------------------------------|--------------------|--|
| SEE SHEET 1<br>EC NO: DRW:BRUTTLE 2010/05/17<br>CHKD: T.TOURISH 2006/10/10<br>APPR: BMAGUIRE 2010/06/08<br>REV DESCRIPTION | QUALITY SYMBOLS                                      | GENERAL TOLERANCES (UNLESS SPECIFIED)   | SCALE 1:1   | DESIGN UNITS METRIC  | THIRD ANGLE PROJECTION              | REVISE ON CAD ONLY |  |
|  |  | mm INCH   | DIMENSION STYLE MM ONLY   |  | TITLE RAST 5 R.A. HDR PA 66 HOUSING |                    |  |
|  |  | 4 PLACES ± --- ± ---<br>3 PLACES ± --- ± ---<br>2 PLACES ± 0.1 ± ---<br>1 PLACE ± 0.2 ± --- | DRAWN BY DATE<br>BRUTTLE 2006/10/10   | MATERIAL NO. DOCUMENT NO. SHEET NO.<br>SEE CHART SD-93003-001 3 OF 5 |                                     |                    |  |
|  |  | ANGULAR ± 2 °   | CHECKED BY DATE<br>T.TOURISH 2006/10/10   | MATERIAL NO. DOCUMENT NO. SHEET NO.<br>SEE CHART SD-93003-001 3 OF 5 |                                     |                    |  |
|  | DRAFT WHERE APPLICABLE MUST REMAIN WITHIN DIMENSIONS | APPROVED BY DATE<br>BMAGUIRE 2010/05/28   | THIS DRAWING CONTAINS INFORMATION THAT IS PROPRIETARY TO MOLEX INCORPORATED AND SHOULD NOT BE USED WITHOUT WRITTEN PERMISSION |  |                                     |                    |  |

| 5 CIRCUIT         |                           | SEE CODE DESIGNATION TABLE FOR NUMBERING<br>FORMAT WHEN ADDING NEW PART NUMBERS |                          |                   |                              |     |                      | P.C.B.<br>POLARISATION<br>OPTION |
|-------------------|---------------------------|---|--------------------------|-------------------|------------------------------|-----|----------------------|----------------------------------|
| PART NO.<br>(TIN) | TERMINAL VOID<br>POSITION | UNBLOCKED<br>POSITION KEYS  | UNBLOCKED<br>CODING KEYS | LATCH<br>POSITION | CONFIGURATION<br>(SEE NOTES) | REF | PART NO.<br>(SILVER) |                                  |
| 93003-2000        | NONE                      | 1a 5b   | 01c d30                  | 1/2 2/3           |                              | K01 | 93003-2749           | A                                |
| 93003-2001        | NONE                      | 1a 3a   | 01c d30                  | 1/2 4/5           |                              | K30 | 93003-2748           | A                                |
| 93003-2002        | NONE                      | 1a 5b   | 01c d20<br>03c d50       | 1/2 3/4           |                              | K31 | 93003-2747           | A                                |
| 93003-2003        | NONE                      | 1b 2a 3b 5a   | 01c 03c                  | 1/2 3/4           |                              | K35 | 93003-2746           | A                                |
| 93003-2023        | NONE                      | 1a 2a 2b 4b 5b  | 01c d30<br>04c d50       | 1/2 2/3 4/5       |                              | K36 | 93003-2732           | A                                |
| 93003-2024        | NONE                      | 2a  | 01c d50                  | 2/3 4/5           |                              | K43 | 93003-2731           | A                                |
| 93003-2025        | NONE                      | 2a 4b   | 01c d20 d40              | 1/2 3/4           |                              | K44 | 93003-2730           | A                                |
| 93003-2026        | NONE                      | 2b  | d20                      | 1/2 4/5           |                              | K02 | 93003-2729           | A                                |
| 93003-2027        | NONE                      | 4b 5a   | 01c d30<br>04c d50       | 1/2 4/5           |                              | K45 | 93003-2728           | A                                |
| 93003-2028        | NONE                      | NONE  | 01c d40                  | 1/2 3/4           |                              | K46 | 93003-2727           | A                                |
| 93003-2029        | NONE                      | 1a 4b   | d30                      | 1/2 4/5           |                              | K04 | 93003-2726           | A                                |
| 93003-2030        | NONE                      | 1a 5b   | d20 d40                  | 1/2 3/4           |                              | K77 | 93003-2725           | A                                |
| 93003-2005        | NONE                      | 1b 2b 4a  | d20 d30 d50              | 1/2 4/5           |                              | K40 | 93003-2744           | A                                |
| 93003-2016        | NONE                      | 3b 4a 5b  | 01c d30 d50              | 2/3 4/5           |                              | k47 | 93003-2738           | A                                |
| 93003-2018        | NONE                      | 1a 4b   | 01c                      | 1/2 3/4           |                              | K48 | 93003-2736           | A                                |
| 93003-2020        | NONE                      | 1a 5b   | d30 04c                  | 2/3               |                              | K50 | 93003-2734           | A                                |
| 93003-2021        | NONE                      | 1b 2a 4a  | 01c 04c d50              | 1/2 4/5           |                              | K51 | 93003-2733           | A                                |
| 93003-2022        | NONE                      | 2b 3b 4a  | 01c d20 d40              | 1/2 3/4           |                              | K52 | 93003-2735           | A                                |
| 93003-2031        | NONE                      | ALL   | ALL                      | 1/2 3/4           |                              | K00 | 93003-2724           | A                                |
| 93003-2032        | 3                         | 2b  | d30                      | 1/2 4/5           |                              | N/A | 93003-2723           | B                                |

| 6 CIRCUIT         |                           | SEE CODE DESIGNATION TABLE FOR NUMBERING<br>FORMAT WHEN ADDING NEW PART NUMBERS |                          |                   |                              |     |                      | P.C.B.<br>POLARISATION<br>OPTION |
|-------------------|---------------------------|---|--------------------------|-------------------|------------------------------|-----|----------------------|----------------------------------|
| PART NO.<br>(TIN) | TERMINAL VOID<br>POSITION | UNBLOCKED<br>POSITION KEYS  | UNBLOCKED<br>CODING KEYS | LATCH<br>POSITION | CONFIGURATION<br>(SEE NOTES) | REF | PART NO.<br>(SILVER) |                                  |
| 93003-2753        | NONE                      | 1b  | 03c d60                  | 1/2 4/5           |                              | K01 | 93003-3499           | A                                |
| 93003-2754        | NONE                      | 1a 3b 4b  | 01c d50 06c              | 1/2 4/5           |                              | K30 | 93003-3498           | A                                |
| 93003-2755        | NONE                      | 1a 1b 2b 3a<br>3b 4b  | d30 04c d50              | 1/2 2/3 4/5       |                              | K37 | 93003-3497           | A                                |
| 93003-2756        | NONE                      | 1a 1b<br>4a 4b  | d10 d50                  | 2/3 4/5           |                              | K39 | 93003-3496           | A                                |
| 93003-2757        | NONE                      | 2a 4b 5a 6b   | d20 03c 05c              | 1/2 3/4 5/6       |                              | K42 | 93003-3495           | A                                |
| 93003-2758        | NONE                      | 1a 2b 3a<br>3b 5b 6b  | 01c d40 d60              | 1/2 3/4 5/6       |                              | K43 | 93003-3494           | A                                |
| 93003-2759        | NONE                      | 1b 2a 3a 4b<br>5a 5b 6b   | 01c 03c d60              | 1/2 3/4 5/6       |                              | K44 | 93003-3493           | A                                |
| 93003-2760        | NONE                      | 2b  | d20 d60                  | 1/2 5/6           |                              | K46 | 93003-3492           | A                                |
| 93003-2761        | NONE                      | 2b 3b 4a  | 01c d50 06c              | 1/2 4/5           |                              | K36 | 93003-3491           | A                                |
| 93003-2762        | NONE                      | 1b 4b   | d20 03c<br>d50 06c       | 1/2 4/5           |                              | K58 | 93003-3486           | A                                |
| 93003-2764        | NONE                      | 1a 2b 3b<br>4a 6b   | 01c 03c d40<br>05c d60   | 1/2 3/4 5/6       |                              | K59 | 93003-3485           | A                                |
| 93003-2765        | NONE                      | 1a 2b 4a 6b   | 01c d40                  | 1/2 3/4 5/6       |                              | K62 | 93003-3484           | A                                |
| 93003-2763        | NONE                      | 1b 2b 3b  | 01c 05c d60              | 1/2 3/4 5/6       |                              | K51 | 93003-3490           | A                                |
| 93003-2766        | NONE                      | 1b  | d20 03c                  | 1/2 4/5           |                              | K55 | 93003-3489           | A                                |
| 93003-2767        | NONE                      | 1b 2a 3a 5a<br>5b   | 01c d20 03c<br>d40 d60   | 1/2 3/4 5/6       |                              | K56 | 93003-3488           | A                                |
| 93003-2771        | NONE                      | 1a 3a 3b 5b<br>6a   | 01c d20 240<br>05c d60   | 1/2 3/4 5/6       |                              | K60 | 93003-3487           | A                                |
| 93003-2772        | NONE                      | ALL   | ALL                      | 1/2 4/5           |                              | K00 | 93003-3483           | A                                |

|  |                      |                                       |                  |   |  |                    |
|--|----------------------|---------------------------------------|------------------|---|--|--------------------|
| SEE SHEET 1<br>EC NO: DRWN: BRUTTLE 2010/05/17<br>CHKD: T.TOURISH 2006/10/10<br>APPR: BMAGUIRE 2010/06/08<br>REV DESCRIPTION | QUALITY SYMBOLS      | GENERAL TOLERANCES (UNLESS SPECIFIED) | SCALE 1:1        | DESIGN UNITS METRIC   | THIRD ANGLE PROJECTION   | REVISE ON CAD ONLY |
|  |                      | mm INCH                               | DIMENSION STYLE  |   | TITLE<br><b>RAST 5 R.A. HDR<br/>PA 66 HOUSING</b>  |                    |
|  |                      | 4 PLACES ± --- ± ---                  | MM ONLY          |   |  |                    |
|  |                      | 3 PLACES ± --- ± ---                  | DRAWN BY DATE    |   |  |                    |
| 2 PLACES ± 0.1 ± ---   | B.BRUTTLE 2006/10/10 |                                       | CHECKED BY DATE  |   | MOLEX INCORPORATED<br>MATERIAL NO. DOCUMENT NO. SHEET NO.<br>SEE CHART SD-93003-001 4 OF 5 |                    |
| 1 PLACE ± 0.2 ± ---  | T.TOURISH 2006/10/10 |                                       | APPROVED BY DATE |   |  |                    |
| ANGULAR ± 2 °  |                      | B.MAGUIRE 2010/05/28                  |                  | THIS DRAWING CONTAINS INFORMATION THAT IS PROPRIETARY TO MOLEX INCORPORATED AND SHOULD NOT BE USED WITHOUT WRITTEN PERMISSION |  |                    |
| DRAFT WHERE APPLICABLE MUST REMAIN WITHIN DIMENSIONS   |                      | A1                                    |                  |   |  |                    |

| 7 CIRCUIT         |                           | SEE CODE DESIGNATION TABLE FOR NUMBERING<br>FORMAT WHEN ADDING NEW PART NUMBERS |                          |                   |                              |     |                      | P.C.B.<br>POLARISATION<br>OPTION |
|-------------------|---------------------------|---|--------------------------|-------------------|------------------------------|-----|----------------------|----------------------------------|
| PART NO.<br>(TIN) | TERMINAL VOID<br>POSITION | UNBLOCKED<br>POSITION KEYS  | UNBLOCKED<br>CODING KEYS | LATCH<br>POSITION | CONFIGURATION<br>(SEE NOTES) | REF | PART NO.<br>(SILVER) |                                  |
| 93003-3500        | NONE                      | NONE  | 03c d40 07c              | 1/2 5/6           |                              | K01 | 93003-4220           | A                                |
| 93003-3512        | NONE                      | 3a 4a   | d30 d70                  | 1/2 5/6           |                              | K30 | 93003-4248           | A                                |
| 93003-3504        | NONE                      | 2b  | d20 d60                  | 1/2 5/6           |                              | K32 | 93003-4247           | A                                |
| 93003-3513        | NONE                      | 1a 1b 3a<br>4b 5a   | 01c 07c                  | 1/2 3/4 5/6       |                              | K40 | 93003-4240           | A                                |
| 93003-3514        | NONE                      | 2a  | 01c d50                  | 2/3 4/5           |                              | K41 | 93003-4239           | A                                |
| 93003-3515        | NONE                      | 7b  | 01c d40 d70              | 1/2 3/4 6/7       |                              | K43 | 93003-4238           | A                                |
| 93003-3516        | NONE                      | 1b  | 03c d60                  | 1/2 4/5           |                              | K31 | 93003-4237           | A                                |
| 93003-3517        | NONE                      | 1a 3a 4b<br>7b  | 01c d20<br>03c 06c       | 1/2 3/4 6/7       |                              | K45 | 93003-4236           | A                                |
| 93003-3518        | NONE                      | 1b 7a   | 02c d50                  | 2/3 6/7           |                              | K48 | 93003-4235           | A                                |
| 93003-3519        | NONE                      | 1a 2b 3a<br>4b 6a   | d20 03c d40<br>d50 d70   | 1/2 3/4 6/7       |                              | K51 | 93003-4234           | A                                |
| 93003-3520        | NONE                      | 1b 6a   | d20 03c<br>d50 d70       | 1/2 3/4 6/7       |                              | K69 | 93003-4233           | A                                |
| 93003-3505        | NONE                      | 1b 2a 5a 5b<br>7b   | d20 d50 06c<br>d70       | 1/2 4/5 6/7       |                              | K34 | 93003-4246           | A                                |
| 93003-3506        | NONE                      | 2b  | d20 07c                  | 1/2 3/4 5/6       |                              | K35 | 93003-4245           | A                                |
| 93003-3507        | NONE                      | 2a 2b 4b 5b<br>6a   | d20 03c d40<br>d60       | 1/2 3/4 5/6       |                              | K38 | 93003-4244           | A                                |
| 93003-3510        | NONE                      | 2b 4a 4b 5b<br>6a   | 01c d20 d40<br>d60       | 1/2 3/4 5/6       |                              | K42 | 93003-4241           | A                                |
| 93003-3521        | NONE                      | ALL   | ALL                      | 1/2 5/6           |                              | K00 | 93003-4232           | A                                |

|   |  |                                   |                                       |  |                         |                     |  |                    |  |
|---|--|-----------------------------------|---------------------------------------|--|-------------------------|---------------------|--|--------------------|--|
| SEE SHEET 1   | EC NO: DRW:BRUTTLE 2010/05/17<br>CHKD: T.TOURISH 2006/10/10<br>APPR: BMAGUIRE 2010/06/08 | QUALITY SYMBOLS<br>▼ - 0<br>∇ - 0 | GENERAL TOLERANCES (UNLESS SPECIFIED) |  | SCALE 1:1               | DESIGN UNITS METRIC | THIRD ANGLE PROJECTION   | REVISE ON CAD ONLY |  |
|   |  |                                   |                                       |  | DIMENSION STYLE MM ONLY |                     | TITLE RAST 5 R.A. HDR PA 66 HOUSING                                  |                    |  |
|   |  |                                   | 4 PLACES ± --- ± ---                  |  | DRAWN BY DATE           |                     | MATERIAL NO. DOCUMENT NO. SHEET NO.<br>SEE CHART SD-93003-001 5 OF 5 |                    |  |
|   |  |                                   | 3 PLACES ± --- ± ---                  |  | B.RUTTLE 2006/10/10     |                     |  |                    |  |
| 2 PLACES ± 0.1 ± ---  |  | CHECKED BY DATE                   |                                       | MATERIAL NO. DOCUMENT NO. SHEET NO.<br>SEE CHART SD-93003-001 5 OF 5 |                         |                     |  |                    |  |
| 1 PLACE ± 0.2 ± ---   |  | T.TOURISH 2006/10/10              |                                       |  |                         |                     |  |                    |  |
| ANGULAR ± 2 °   |  | APPROVED BY DATE                  |                                       | MATERIAL NO. DOCUMENT NO. SHEET NO.<br>SEE CHART SD-93003-001 5 OF 5 |                         |                     |  |                    |  |
| DRAFT WHERE APPLICABLE MUST REMAIN WITHIN DIMENSIONS  |  | BMAGUIRE 2010/05/28               |                                       |  |                         |                     |  |                    |  |
| THIS DRAWING CONTAINS INFORMATION THAT IS PROPRIETARY TO MOLEX INCORPORATED AND SHOULD NOT BE USED WITHOUT WRITTEN PERMISSION |  |                                   |                                       |  |                         |                     |  |                    |  |