

Pulse Width Controller

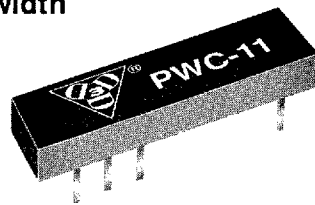
SERIES: PWC-11

**ECL Interfaced
16 pins DIP**



Features:

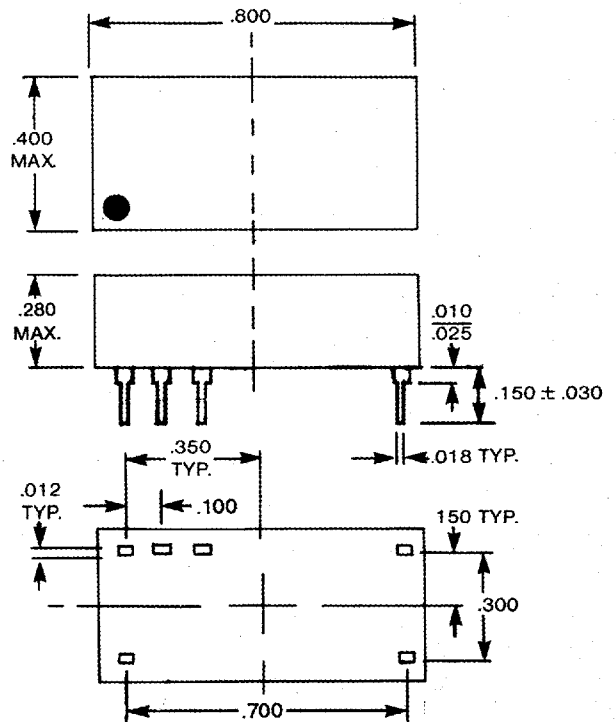
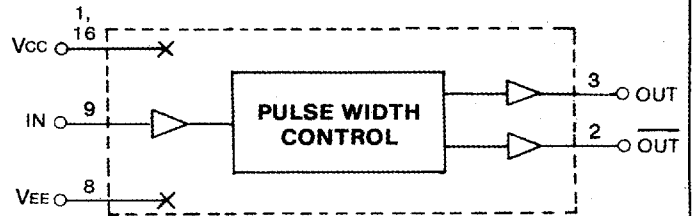
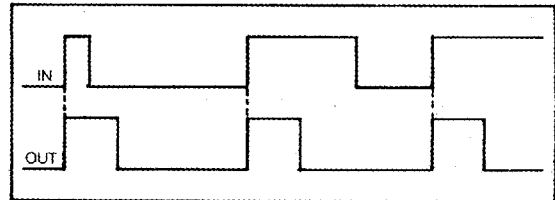
- Exact control of pulse width
- Rising edge trigger
- Auto-insertable
- ECL input & outputs
- High speed



Specifications:

- Input signal: ECL.
- Minimum input pulse-width: 10 ns.
- Output fan-out: 70 ECL loads.
- Trigger inherent delay: 5 ns typ.
- Pulse-width tolerance: See table.
- Supply voltage: -5.2 Vdc.
- Supply current: 56 ma typ.
- Operating temperature: -30°C to +85°C.
- Temperature coefficient: 100 PPM/°C.
- Output rise-time: 2 ns typ.
- DC Parameters: See ECL-10KH Logic Table on Page 6.

Part No.	Pulse Width (in ns)	Maximum Pulse Rate (in Mhz)
PWC-11-5	5 ± 1	98
PWC-11-6	6 ± 1	80
PWC-11-7	7 ± 1	70
PWC-11-8	8 ± 1	60
PWC-11-9	9 ± 1	54
PWC-11-10	10 ± 1	49
PWC-11-15	15 ± 1	32
PWC-11-20	20 ± 1	24
PWC-11-25	25 ± 1	19
PWC-11-30	30 ± 1	15
PWC-11-35	35 ± 1.5	13
PWC-11-40	40 ± 1.5	11
PWC-11-45	45 ± 1.5	10
PWC-11-50	50 ± 1.5	9
PWC-11-60	60 ± 1.5	8
PWC-11-70	70 ± 2	7
PWC-11-75	75 ± 2	6
PWC-11-80	80 ± 2	6
PWC-11-90	90 ± 3	5
PWC-11-100	100 ± 3	4



■ 2644382 0001062 64T ■

3 Mt. Prospect Avenue, Clifton, New Jersey 07013 ■ (201) 773-2299 ■ FAX (201) 773-9672