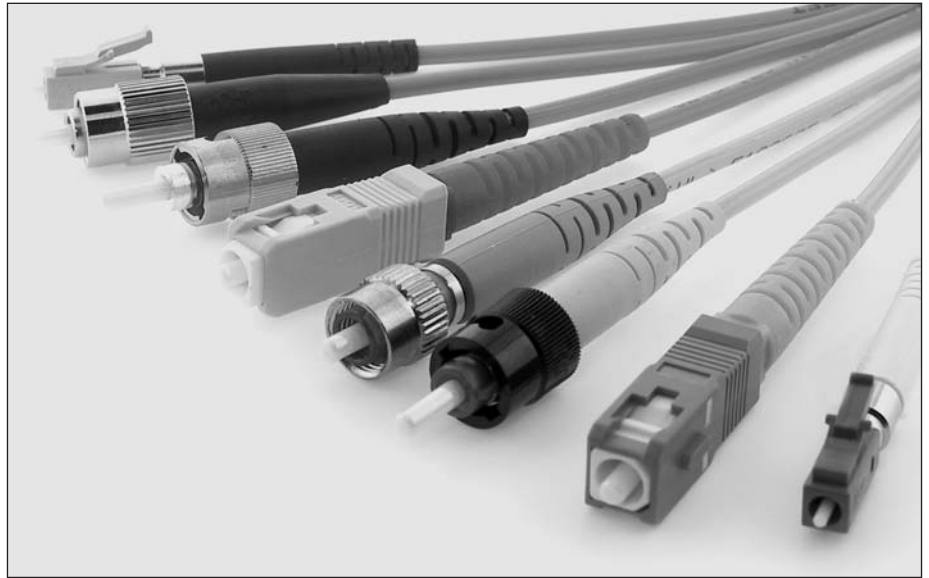


The Fiber Optic PatchCord Assemblies (FPA) series are available in single-mode and multi-mode, in simplex and duplex. They are manufactured and tested to industry standards. They are in accordance to Telcordia, TIA/EIA, and IEC specifications.

FPA cable assemblies are available in Premium and Standard performance levels. The Premium performance grade cable offering is for applications requiring high-performance. The Standard performance grade cable offering is for applications where cost is of most concern.

Applications:

- Fast Ethernet, Data Communications LAN and WAN
- High-Speed Enterprise Servers
- Multiplexors, Switches, and Routers
- Optical Access and ATM Networks Equipment
- Optical Transport and Telecommunications Switching Equipment



 For more information: www.ittcannon.com/cat297

Product Features

- FPA are available in 3 mm dia. cable with industry standard connectors in the LC, SC, ST, and FC single channel connector types. VF-45 and MT-RJ are also available. LC/LC assemblies are with 900 μm buffered fiber (Un-ruggedized), 1.6 dia. and 3 mm dia. jacket optional (Ruggedized).
- Premium performance grade cables offer low-loss superior performance at competitive prices for optimum value to customers:
 - Ultra PC polish (3U grade-Ultra Physical Contact polish)
 - Angled PC polish (3A grade-Angle Physical Contact polish)
- Standard performance grade cables for cost conscious applications:
 - PC polish (5P grade-Physical Contact polish)
- Single-mode (Yellow Jacketed-8.3/125 μm) cables are manufactured in PC, UPC, and APC polish versions.
- Multi-mode (Orange Jacketed-62.5/125 μm ZipCord) is standard for FPA cable assemblies. Multi-mode 50/125 μm fiber is optional.
- UL-listed OFNR Riser rated jacket. Optional UL-listed OFNP Plenum rated cable jacket for routing under computer room floors and in air circulating ducts.
- Standard FPA offering in 1 m, 2 m, 3 m, 5 m and 10 m lengths. Optional non-standard cable lengths and a variety of other connector types. Patch cord assemblies with various connector type pairings are also available.
- Meets TIA/EIA 568 specifications. Compliance with Telcordia GR-326-CORE also available.
- All assemblies are 100% tested for optical attenuation performance.
- Cost effective custom cable assemblies in special lengths and/or connectors built to customer specific configuration.

Performance Specifications

Single-mode

PC (5P)	Insertion Loss: ≤ 0.5 dB, Return Loss: ≥ -35 dB
UPC (3U)	Insertion Loss: ≤ 0.3 dB, Return Loss: ≥ -55 dB
APC (3A)	Insertion Loss: ≤ 0.3 dB, Return Loss: ≥ -65 dB

Multi-mode

PC (5P)	Insertion Loss: ≤ 0.5 dB
---------	-------------------------------

 Please contact your local Cannon representative: www.ittcannon.com/support/ContactUs