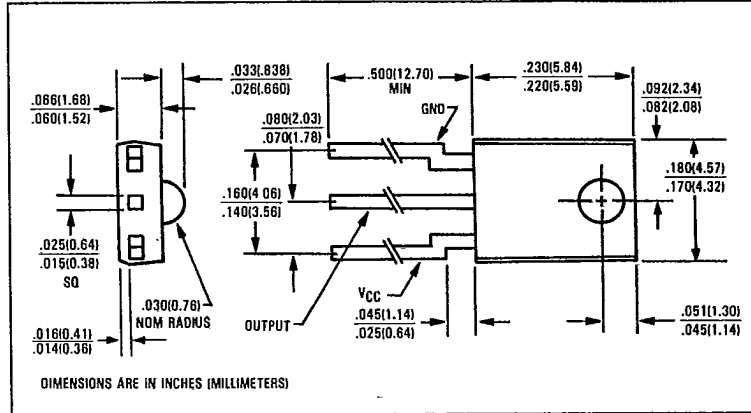
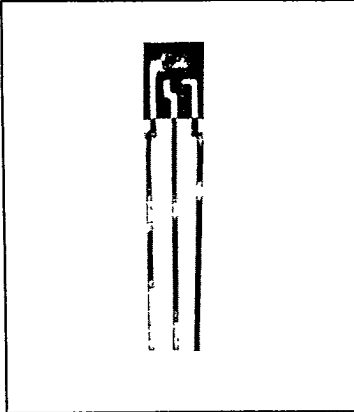




Photologic™ Plastic Sensors

Types OPL550, OPL551 Series

T-41-69



Features

- Four output options
- High noise immunity
- Direct TTL/LSTTL interface
- Low cost plastic side-looking package
- Mechanically and spectrally matched to OP140 and OP240 series LEDs
- Data rates to 250 kbaud

Description

The OPL550, OPL550-OC, OPL551, and OPL551-OC contain a monolithic integrated circuit which incorporates a photodiode, a linear amplifier and a Schmitt trigger on a single silicon chip. The devices feature TTL/LSTTL compatible logic level output which can drive up to 8 TTL loads without additional circuitry. Also featured are medium speed data rates to 250 kbaud with typical rise and fall times of 25 nsec. The Schmitt trigger's hysteresis characteristics provide high immunity to noise on input and V_{CC}. The Photologic™ chip is encapsulated in a molded plastic package which has an integral lens for enhanced optical coupling. These devices are mechanically and spectrally matched to OP140 and OP240 infrared emitting diodes.

Absolute Maximum Ratings (T_A = 25°C unless otherwise noted)

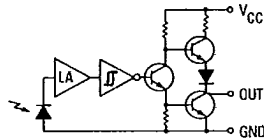
Supply Voltage, V _{CC} (not to exceed 3 seconds)	+10.0V
Storage Temperature Range	-40°C to +100°C
Operating Temperature Range	-40°C to +85°C
Lead Soldering Temperature [1/16 inch (1.6mm) from case for 5 sec. with soldering iron]	240°C ⁽¹⁾
Power Dissipation	85mW ⁽²⁾
Duration of Output Short to V _{CC} or Ground (OPL550, OPL551)	1.00 sec.
Duration of Output Short to V _{CC} (OPL550-OC, OPL551-OC)	1.00 sec.
Voltage at Output Lead (OPL550-OC, OPL551-OC)	35V
Low Level Output Current	16.0mA
High Level Output Current (OPL550, OPL551)	1.00mA
Irradiance	10mW/cm ²

Notes:

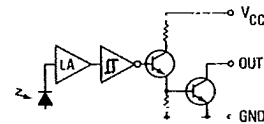
- (1) RMA flux is recommended. Duration can be extended to 10 sec. max. when flow soldering. Max. 20 grams force may be applied to leads when flow soldering.
- (2) Derate linearly 4.25 mW/°C above 80°C.
- (3) Irradiance measurements are made with λ_i = 935nm.

Schematics

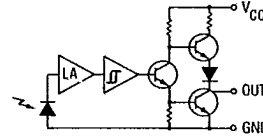
OPL550 (Totem-Pole Output) Buffer



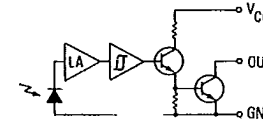
OPL550-OC (Open-Collector Output) Buffer



OPL551 (Totem-Pole Output) Inverter



OPL551-OC (Open-Collector Output) Inverter



OPTeK TECHNOLOGY INC
Types OPL550, OPL551 Series

27E D ■ 6798580 0000719 7 ■

T-41-69

Electrical Characteristics (-40°C to +85°C unless otherwise noted)

SYMBOL	PARAMETER	MIN	TYP	MAX	UNITS	TEST CONDITIONS
V _{CC}	Operating Supply Voltage	4.5		5.5	V	
	Peak-to-Peak V _{CC} Ripple Necessary to Cause False Triggering of Output		2.0		V	V _{CC} = 5.0VDC f = DC to 50 MHz
E _{eT} (+)	Positive-Going Threshold Irradiance			2.4	mW/cm ²	V _{CC} = 5.0V, T _A = 25°C(3)
	OPL550, OPL550-OC, OPL551, OPL551-OC	.25		1.40	mW/cm ²	V _{CC} = 5.0V, T _A = 25°C
	OPL550A, OPL550-OCA, OPL551A, OPL551-OCA	.25		1.90	mW/cm ²	V _{CC} = 5.0V, T _A = 25°C
	OPL550B, OPL550-OCB, OPL551B, OPL551-OCB	.65				
E _{eT} (+)/E _{eT} (-)	Hysteresis Ratio	1.50	2.0	2.5		
I _{CC}	Supply Current		8.0	15.0	mA	V _{CC} =5.5V, E _e =0or3.0mW/cm ²

OPL550 (Buffer, Totem-Pole)

V _{OH}	High Level Output Voltage	2.4	3.3		V	V _{CC} = 4.5V, I _{OH} = -800μA, E _e = 3.0 mW/cm ²
V _{OL}	Low Level Output Voltage		0.25	0.40	V	V _{CC} = 4.5V, I _{OL} = 12.8mA, E _e = 0
I _{OS}	Short Circuit Output Current	-20	-55	-100	mA	V _{CC} =5.5V, E _e = 3.0mW/cm ² , Output = GND

OPL550-OC (Buffer, Open-Collector)

I _{OH}	High Level Output Current		1.00	100	μA	V _{CC} = 4.5V, V _{OH} = 30V, E _e = 3.0mW/cm ²
V _{OL}	Low Level Output Voltage		0.25	0.40	V	V _{CC} = 4.5V, I _{OL} = 12.8mA, E _e = 0

OPL551 (Inverter, Totem-Pole)

V _{OH}	High Level Output Voltage	2.4	3.3		V	V _{CC} = 4.5V, I _{OH} = -800μA, E _e = 0
V _{OL}	Low Level Output Voltage		0.25	0.40	V	V _{CC} = 4.5V, I _{OL} = 12.8mA, E _e = 3.0mW/cm ²
I _{OS}	Short Circuit Output Current	-20	-55	-100	mA	V _{CC} = 5.5V, E _e = 0, Output = GND

OPL551-OC (Inverter, Open-Collector)

I _{OH}	High Level Output Current		1.00	100	μA	V _{CC} = 4.5V, V _{OH} = 30V, E _e = 0
V _{OL}	Low Level Output Voltage		0.25	0.40	V	V _{CC} = 4.5V, I _{OL} = 12.8mA, E _e = 3.0mW/cm ²

OPL550, OPL551

t _r , t _f	Output Rise, Time Output Fall Time		25	70	ns	V _{CC} = 5.0V, T _A = 25°C, E _e = 0 or 3.0mW/cm ²
t _{PLH} , t _{PHL}	Propagation Delay, Low-High, High-Low		2.5	5.0	μs	f = 10.0kHz, D.C. = 50%, R _L = 8TTL Loads

OPL550-OC, OPL551-OC

t _r , t _f	Output Rise, Time Output Fall Time		25	70	ns	V _{CC} = 5.0V, T _A = 25°C, E _e = 0 or 3.0mW/cm ²
t _{PLH} , t _{PHL}	Propagation Delay, Low-High, High-Low		2.5	5.0	μs	f = 10.0kHz, D.C. = 50%, R _L = 360Ω

Optek reserves the right to make changes at any time in order to improve design and to supply the best product possible.

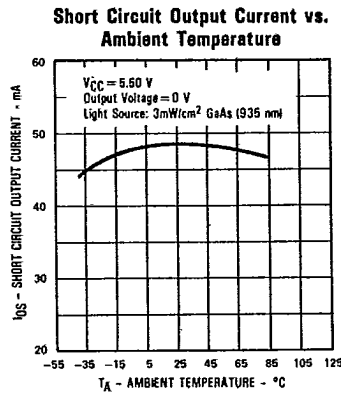
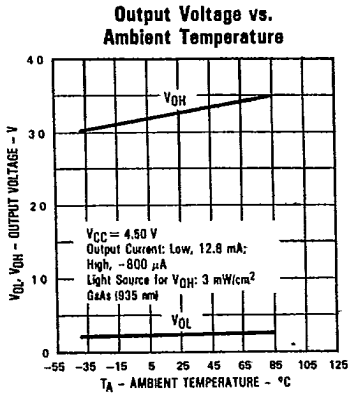
Optek Technology, Inc., 1215 West Crosby Road, Carrollton, Texas 75006 (214) 323-2200 TLX 215849 Fax (214) 323-2396
Printed in USA

PHOTOLOGIC SENSORS

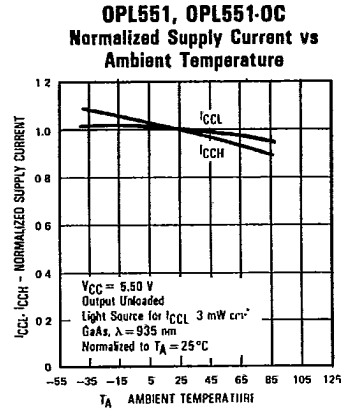
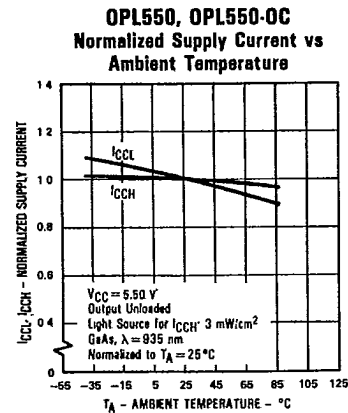
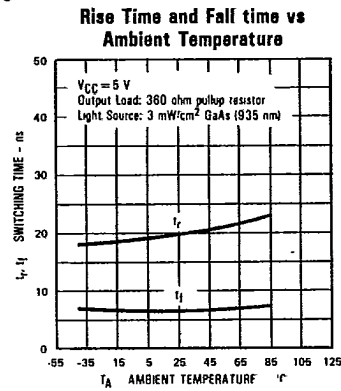
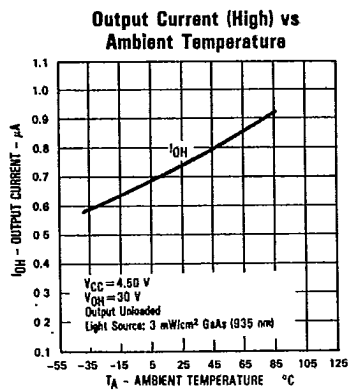
T-41-69

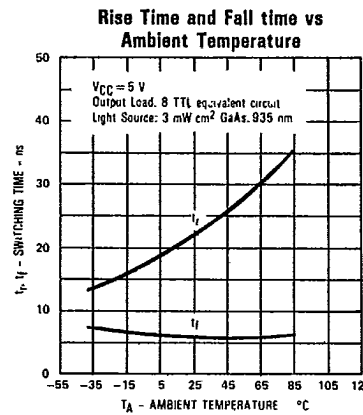
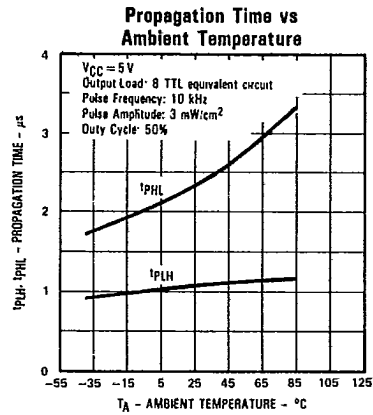
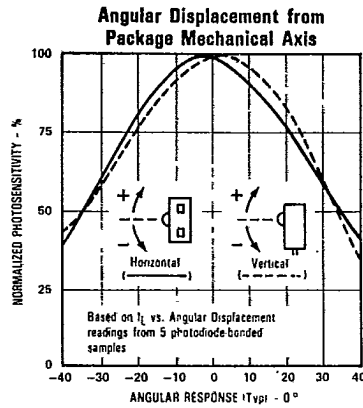
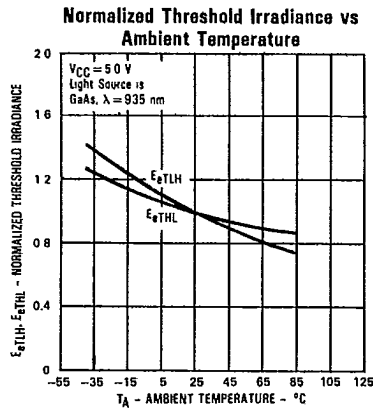
Typical Performance Curves

OPL550, OPL551



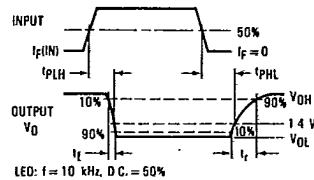
OPL550-OC, OPL551-OC



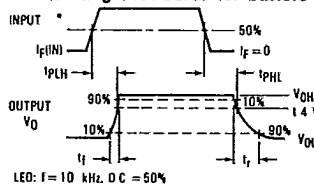


PHOTOLOGIC SENSORS

Switching Test Curve for Inverters



Switching Test Curve for Buffers



Optek reserves the right to make changes at any time in order to improve design and to supply the best product possible.

Optek Technology, Inc., 1215 West Crosby Road, Carrollton, Texas 75006 (214) 323-2200 TLX 215849 Fax (214) 323-2396

Printed in USA