

SMD CMOS PROGRAMMABLE CRYSTAL OSCILLATOR



3.2 x 2.5 x 1.2mm

AP3S



RoHS Compliant

FEATURES:

- Performance comparable to fixed frequency oscillator
- Lowest peak-to-peak jitter
- Low supply current
- Short lead time
- Suitable for mass production
- Alternative to long lead-time XO's

For Small Quantities, Delivery Time is 1-5 days

ELECTRICAL SPECIFICATIONS:

Characteristics	Unit	Minimum	Typical	Maximum
Frequency Range (3.3V)	MHz	1	--	200
	(2.5V)	MHz	1	166
	(1.8V)	MHz	1	133
Operating Temp. Range (See Options)	°C	-10	--	60
Freq. stability over operating temp.* (See Options)	ppm	-100	--	100
Input Voltage (Operating Vdd)	V	2.97	3.3	3.63
	V	2.25	2.5	2.75
	V	1.62	1.8	1.98
Input Current	mA	See Table 1		
Output Type	CMOS			
Output Load	pF	--	15	--
Output "0" level (3.3V)	V	--	--	0.33
	(2.5V)	V	--	0.25
	(1.8V)	V	--	0.18
Output "1" level (3.3V)	V	2.97	--	--
	(2.5V)	V	2.25	--
	(1.8V)	V	1.62	--
Symmetry	%	45	50	55
Standby Current	uA	--	--	10
Start-up Time	mSec	••	••1	10
Rise Time (10%→90% Vdd)	nSec	See Table 2		
Fall Time (90%→10% Vdd)	nSec	See Table 2		
Tri-state Function (Input to pin 1)	••	pin 1 : High or Open , pin 3 : Enable		
	••	pin 1 : Low , pin 3 : Disable		
Jitter peak-to-peak**	psec	--	40 to 200	--

* Inclusive of calibration @25°C, operating temperature range, input voltage variation, load variation, aging, shock, and vibration.

** Jitter performance depends on programming parameter and output frequency. Please contact ABRACON for additional info.

Table 1: Input Current

Frequency MHz	Input current (mA)		
	3.3V	2.5V	1.8V
1MHz ≤ F < 30MHz	10	8	6
30MHz ≤ F < 75MHz	15	10	8
75MHz ≤ F < 133MHz	20	15	12
133MHz ≤ F < 166MHz	22	15	-
166MHz ≤ F < 200MHz	25	-	-

Table 2: Rise and Fall Time

Frequency MHz	Rise / Fall Time (ns)		
	3.3V	2.5V	1.8V
1MHz ≤ F < 10MHz	6	8	10
10MHz ≤ F	5	5	6

OPTIONS & PART IDENTIFICATION: [Left blank if standard]

AP3S□-Frequency*-□-□-□-□

Supply Voltage	Operating Temp.	Freq. Stability	PIN 1(Option)	Packaging
Blank* 3.3 V	I 0°C to +50°C	J (***) ±20ppm	**Blank OE	Blank Bulk
1 2.5 V	E -20°C to +70°C	R ±25ppm	**B PDB	T Tape and Reel
2 1.8 V	F -30°C to +70°C	K ±30ppm		
	N -30°C to +85°C	C ±50ppm		
	L -40°C to +85°C			

Ask for Tube Package

- (***) Available for I, or E temp options only
Contact ABRACON for EJ or LR options (Availability is limited)
- ** OE: Tri-state the output buffer
- ** PDB: Tri-state the output buffer & shut-off the oscillator, <10uA when PDB enabled
- * Frequency in MHz

ABRACON IS ISO 9001 / QS 9000 CERTIFIED



ABRACON CORPORATION

Visit www.abracon.com for Terms & Conditions of Sale Revised: 08.06.09

30332 Esperanza, Rancho Santa Margarita, California 92688

tel 949-546-8000 | fax 949-546-8001 | www.abracon.com

SMD CMOS PROGRAMMABLE CRYSTAL OSCILLATOR



3.2 x 2.5 x 1.2mm

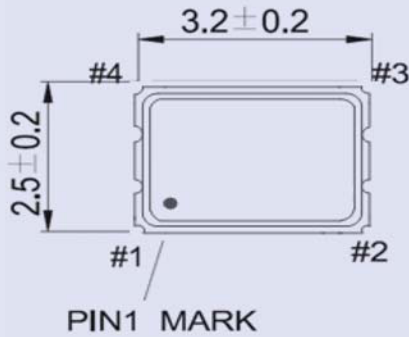
AP3S



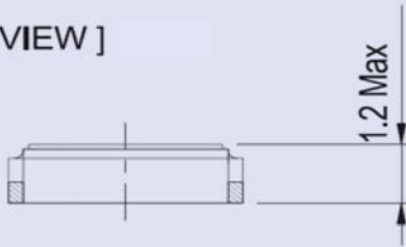
OUTLINE DRAWING:

TEST CIRCUIT:

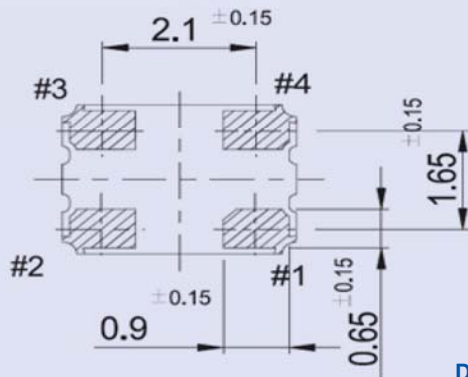
[TOP VIEW]



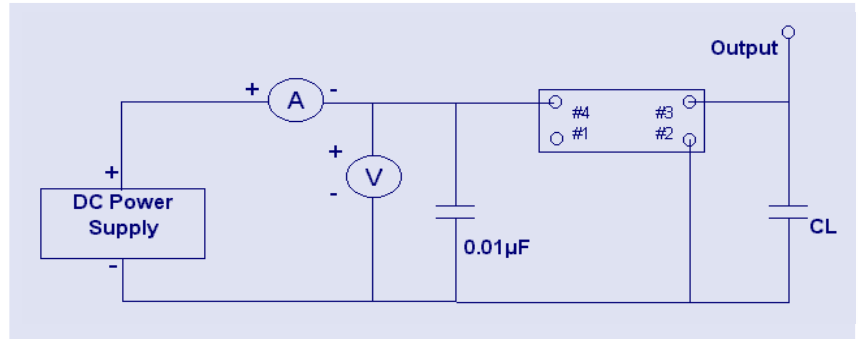
[SIDE VIEW]



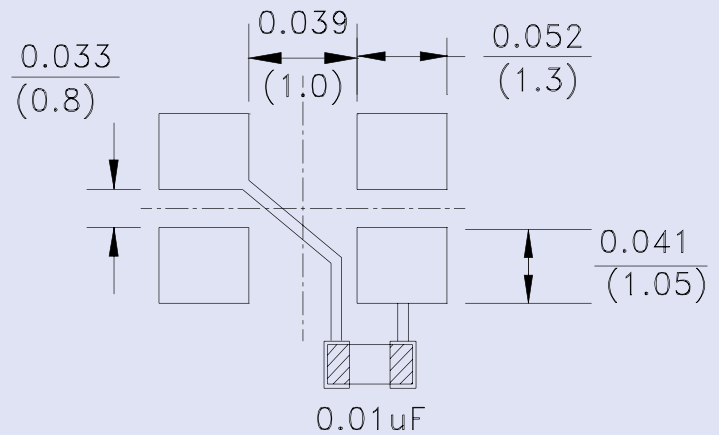
[BOTTOM VIEW]



Dimension : Inches (mm)



Recommended land pattern



Note: It is recommended to use an approximately 0.01µF bypass capacitor between PIN 2 and 4.

PIN	CONNECTION
# 1	STAND-BY / OE
# 2	GND/CASE
# 3	OUTPUT
# 4	VDD

SMD CMOS PROGRAMMABLE CRYSTAL OSCILLATOR

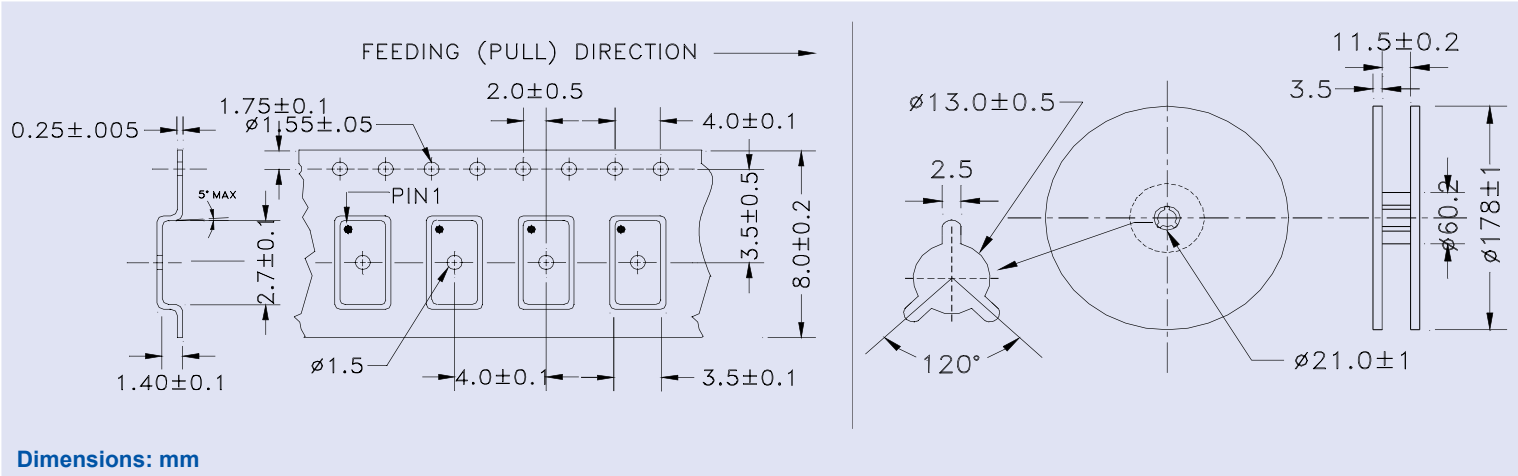


3.2 x 2.5 x 1.2mm

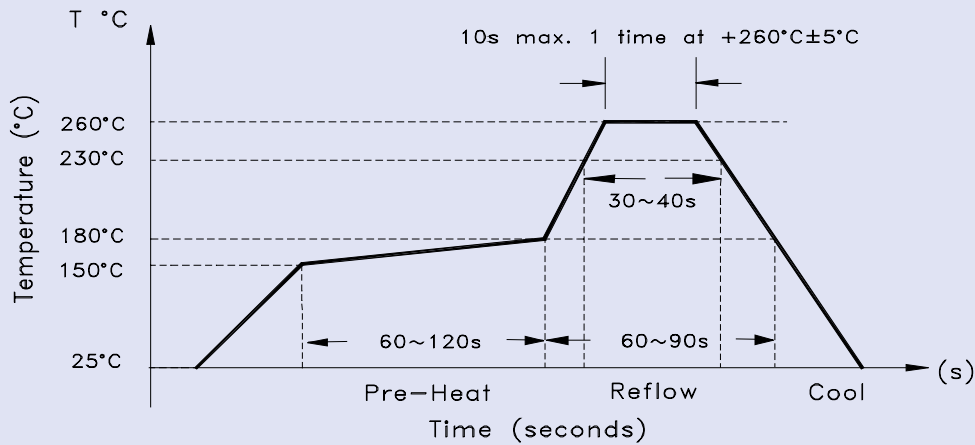
AP3S

Pb RoHS Compliant

TAPE & REEL: Tape and reel 1,000 pcs/reel



REFLOW PROFILE:



NOTE: Abracon manufactured products are intended for general commercial and industrial use. For applications requiring high reliability and/or presenting extreme operating environment, written consent & authorization from Abracon is required.

ABRACON IS
ISO 9001 / QS 9000
CERTIFIED



Visit www.abracon.com for Terms & Conditions of Sale **Revised: 08.06.09**
30332 Esperanza, Rancho Santa Margarita, California 92688
tel 949-546-8000 | fax 949-546-8001 | www.abracon.com