

# Interface Connectors for Cellular Telephone CAM-E87

## FEATURES

1. Interface connector for cell phone (cdmaOne).
2. Power supply receptacle, uses pins 1, 8, 15, 16, 18 (15, 16 are common).
3. Supports master key specifications or user key grooves.
4. Includes shield case.
5. Manual solder specifications.



## HOW TO ORDER

**E87-004-05 0-A Q B M G**  
 1 2 3 4 5 6 7 8 9

1. Series No. (E87)
2. No. of contacts (004 : 4pins)
3. Housing material (05 : 46Nylon)
4. Housing UL grade (0 : UL94V-0)
5. Contact plating (A : Gold)
6. Contact plating thickness (Q : 0.6 $\mu$ )
7. Contact style (B : Angle)
8. Coupling side accessories. (M : Shield Case)
9. Board side accessories. (G : Guide Pin)

## SPECIFICATIONS

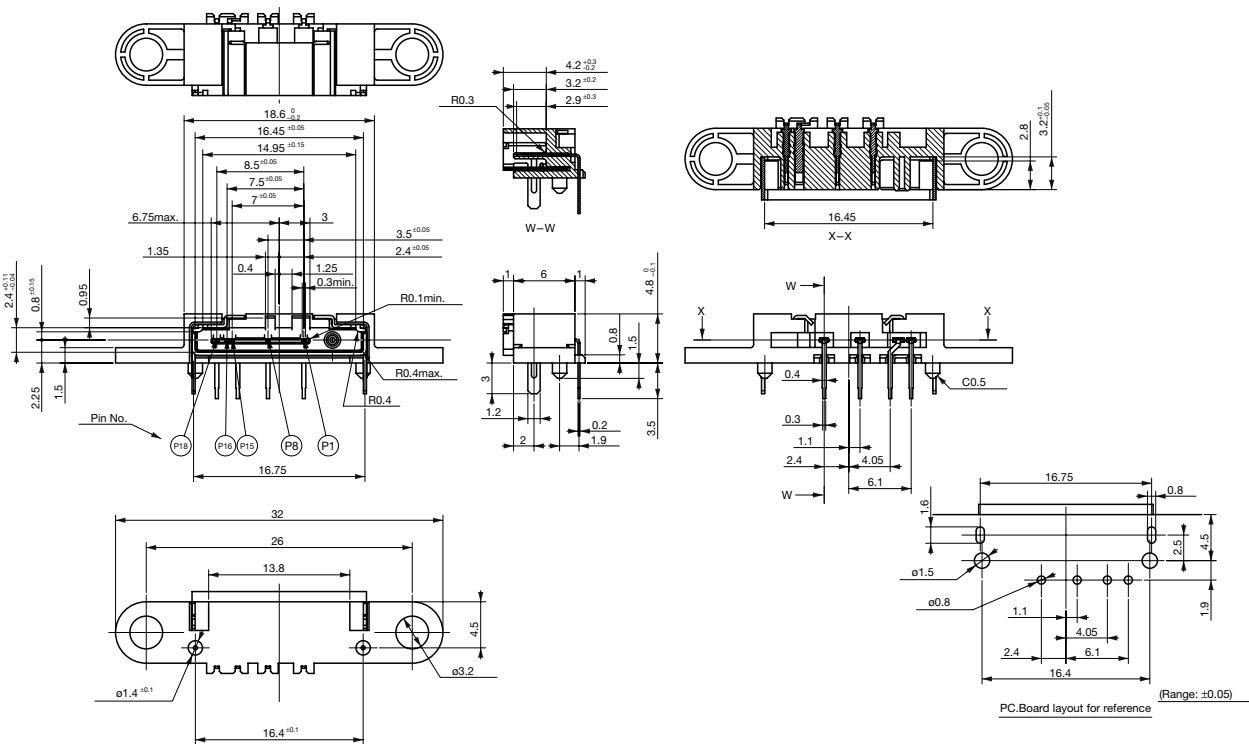
### ELECTRICAL CHARACTERISTICS

Rated Voltage	DC 100V
Rated Current	DC 0.5A
Withstanding Voltage	250V AC (rms) 1minute
Insulation Resistance	100M $\Omega$ min. (at 250V DC)
Contact Resistance	50m $\Omega$ max.

## MATERIAL & FINISH

Component Parts	Material	Finish
Plug Housing	Nylon 46	(Black)
Contact	Copper Alloy	Gold plating
Shield Case	Copper Alloy	Copper-tin plating

## DIMENSIONS



Unit: mm  
 ☆ Tolerance: ±0.3