



# General Purpose Type Photocoupler

## LTV-4N35 Series/LTV-4N37 Series

### 4N35 Series/4N37 Series

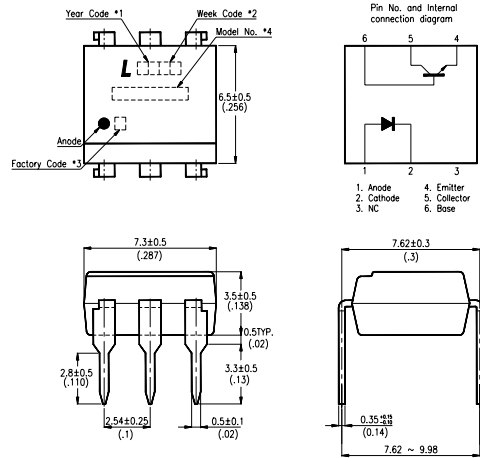
### Features

- High current transfer ratio  
(CTR : MIN.100% at  $I_f=10\text{mA}$ ,  $V_{CE}=10\text{V}$ )
- Response time  
( $t_{on}$  : TYP,  $3\mu\text{s}$  at  $V_{CE}=10\text{V}$ ,  $I_c=2\text{mA}$ ,  $R_L=100\ \Omega$ )
- Input-output isolation voltage :  
LTV-4N35(Viso : 3,550Vrms)  
LTV-4N37(Viso : 1,550Vrms)
- UL approved (No. E113898)
- TUV approved (No.R9653630)
- CSA approved (No. CA91533-1)
- FIMKO approved (No. 193422)
- NEMKO approved (No. P96103013)
- DEMKO approved (No. 303985)
- SEMKO approved (No. 9646047/01-30)
- VDE approved (No. 094722)
- Options available :  
-Leads with 0.4"(10.16mm)spacing (M Type)  
-Leads bends for surface mounting(S Type)  
-Tape and Reel of Type I for SMD(Add"-TA"Suffix)  
-Tape and Reel of Type II for SMD(Add"-TA1"Suffix)  
-VDE 0884 approvals (Add"-V"Suffix)

### Applications

1. I/O interfaces for computers.
2. System appliances, measuring instruments.
3. Signal transmission between circuits of different potentials and impedances.

### Package Dimensions



Note:

1. Year date code.
2. 2-digit work week.
3. Factory code shall be marked (Z : Taiwan, Y : Thailand).
4. Model No.:LTV4N35 ; LTV4N37 ; 4N35 ; 4N37
5. All dimensions are in millimeters (inches).
6. Tolerance is  $\pm 0.25\text{mm}$  (.010") unless otherwise noted.
7. Specifications are subject to change without notice.

### Ordering Information

Part Number	Package	Safety Standard Approval	Application part number
LTV-4N35 / 4N35 LTV-4N35M / 4N35M LTV-4N35S / 4N35S LTV-4N35S-TA / 4N35S-TA LTV-4N35S-TA1 / 4N35S-TA1	6-pin DIP 6-pin (leads with 0.4" spacing) 6-pin (lead bends for surface mount) 6-pin (tape and reel packaging of type I) 6-pin (tape and reel packaging of type II)	<ul style="list-style-type: none"> <li>• UL approved</li> <li>• TUV approved</li> <li>• CSA approved</li> <li>• FIMKO approved</li> <li>• NEMKO approved</li> <li>• SEMKO approved</li> <li>• DEMKO approved</li> </ul>	LTV - 4N35
LTV-4N37 / 4N37 LTV-4N37M / 4N37M LTV-4N37S / 4N37S LTV-4N37S-TA / 4N37S-TA LTV-4N37S-TA1 / 4N37S-TA1	6-pin DIP 6-pin (leads with 0.4" spacing) 6-pin (lead bends for surface mount) 6-pin (tape and reel packaging of type I) 6-pin (tape and reel packaging of type II)		LTV - 4N37
LTV4N35-V / 4N35-V LTV4N35M-V / 4N35M-V LTV4N35S-V / 4N35S-V LTV4N35STA-V / 4N35STA-V LTV4N35STA1-V / 4N35STA1-V	6-pin DIP 6-pin (leads with 0.4" spacing) 6-pin (lead bends for surface mount) 6-pin (tape and reel packaging of type I) 6-pin (tape and reel packaging of type II)	<ul style="list-style-type: none"> <li>• VDE approved</li> </ul>	LTV - 4N35
LTV4N37-V / 4N37-V LTV4N37M-V / 4N37M-V LTV4N37S-V / 4N37S-V LTV4N37STA-V / 4N37STA-V LTV4N37STA1-V / 4N37STA1-V	6-pin DIP 6-pin (leads with 0.4" spacing) 6-pin (lead bends for surface mount) 6-pin (tape and reel packaging of type I) 6-pin (tape and reel packaging of type II)		LTV - 4N37

PHOTOCOUPLER

## Absolute Maximum Ratings

(Ta=25°C)

Parameter		Symbol	Rating	Unit
Input	Forward Current	IF	60	mA
	Reverse Voltage	VR	6	V
	Power Dissipation	P	100	mW
Output	Collector-Emitter Voltage	VCEO	30	V
	Collector-Base Voltage	VCBO	70	V
	Emitter-Collector Voltage	VECO	7	V
	Collector Current	IC	100	mA
	Collector Power Dissipation	PC	300	mW
Total Power Dissipation		Ptot	350	mW
*1. Isolation Voltage	4N35	Viso	3,550	Vrms
	4N37		1,500	
Operating Temperature		Topr	-55~+100	°C
Storage Temperature		Tstg	-55~+150	°C
*2. Soldering Temperature		Tsol	260	°C

\*1. AC for 1 minute, R.H. = 40 ~ 60%

• Isolation voltage shall be measured using the following method.

(1) Short between anode and cathode on the primary side and between collector, emitter and base on the secondary side.

(2) The isolation voltage tester with zero-cross circuit shall be used.

(3) The waveform of applied voltage shall be a sine wave.

\*2. For 10 seconds.

## Electrical/Optical Characteristics

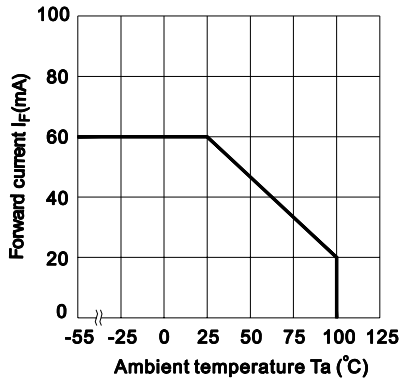
(Ta=25°C)

Parameter		Symbol	Min.	Typ.	Max.	Unit	Conditions	
Input	Forward Voltage	VF	—	1.2	1.5	V	IF=10mA	
	Reverse Current	IR	—	—	10	μA	VR=4V	
	Terminal Capacitance	Ct	—	50	—	pF	V=0, f=1kHz	
Output	Collector Dark Current	Ta=25°C	—	—	50	nA	VCE=10V	
		Ta=25°C	—	—	500	μA	VCE=30V	
	Collector-Emitter Breakdown Voltage	BVCEO	30	—	—	V	IC=0.1mA	
	Emitter-Collector Breakdown Voltage	BVECO	7	—	—	V	IE=10 μA	
	Collector-Base Breakdown Voltage	BVCBO	70	—	—	V	IC=0.1mA	
Transfer Characteristics	Collector Current	Ta=25°C	IC	10	—	—	mA	IF=10mA VCE=10V
	*1 Current Transfer Ratio	Ta=25°C	CTR	100	—	—	%	IF=10mA VCE=10V
	Collector-emitter Saturation Voltage		VCE(sat)	—	—	0.3	V	IF=50mA, IC=2mA
	Isolation Resistance		RISO	5 × 10 <sup>10</sup>	1 × 10 <sup>11</sup>	—	Ω	DC500V, 40~60% R.H.
	Floating Capacitance		Cf	—	1.0	2.5	pF	V=0, f=1MHz
	Response Time (Turn-on Time)		ton	—	3	10	μs	VCE=10V, RBE= ∞
	Response Time (Turn-off Time)		toff	—	3	10	μs	RL=100 Ω, IC=2mA

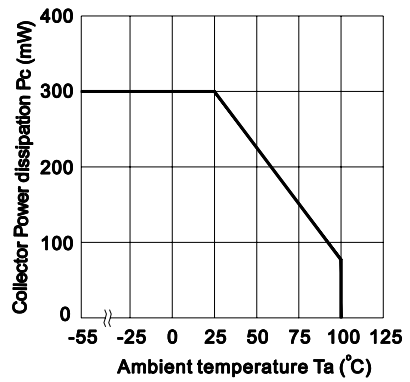
\*1. CTR=  $\frac{IC}{IF} \times 100\%$

# Typical Electrical/Optical Characteristic Curves (25°C Ambient Temperature Unless Otherwise Noted)

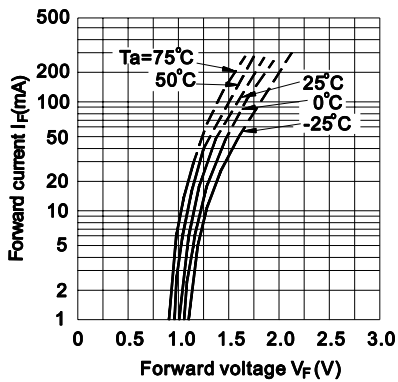
**Fig.1 Forward Current vs. Ambient Temperature**



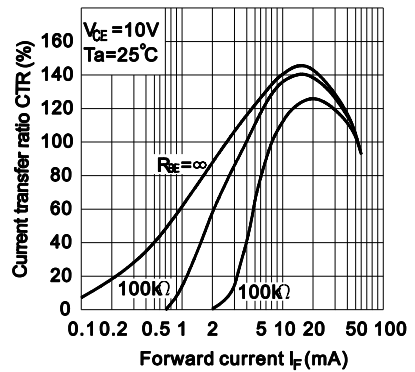
**Fig.2 Collector Power Dissipation vs. Ambient Temperature**



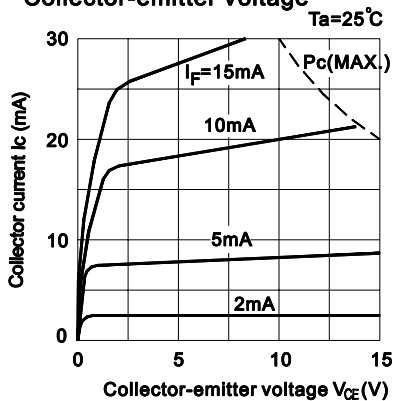
**Fig.3 Forward Current vs. Forward Voltage**



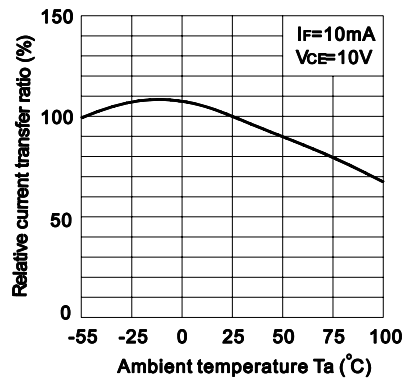
**Fig.4 Current Transfer Ratio vs. Forward Current**



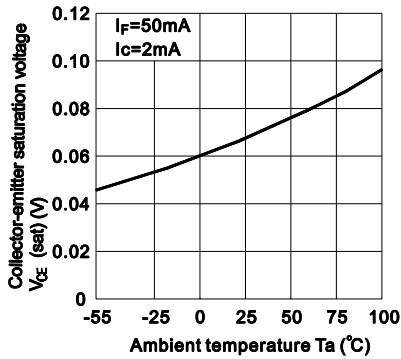
**Fig.5 Collector Current vs. Collector-emitter Voltage**



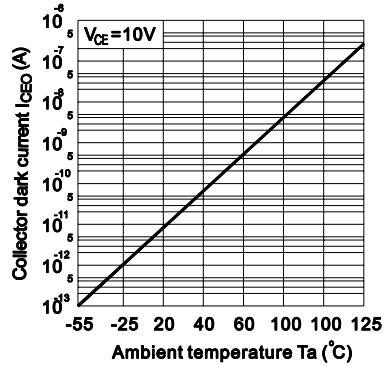
**Fig.6 Relative Current Transfer Ratio vs. Ambient Temperature**



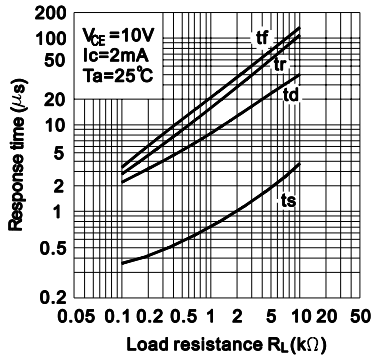
**Fig.7 Collector-emitter Saturation Voltage vs. Ambient Temperature**



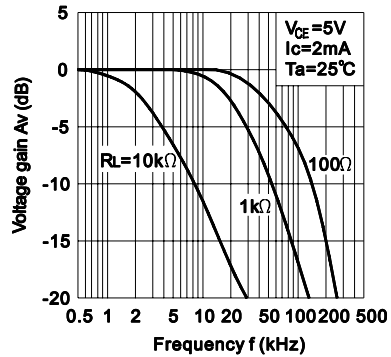
**Fig.8 Collector Dark Current vs. Ambient Temperature**



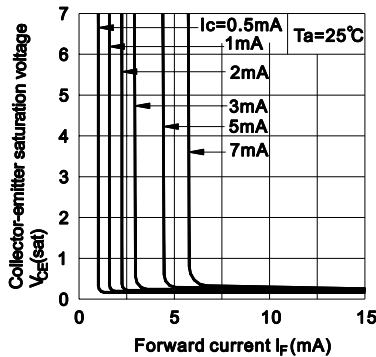
**Fig.9 Response Time vs. Load Resistance**



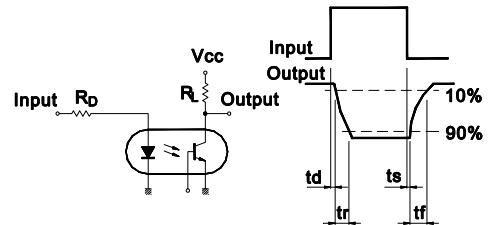
**Fig.10 Frequency Response**



**Fig.11 Collector-emitter Saturation Voltage vs. Forward Current**



**Test Circuit for Response Time**



**Test Circuit for Frequency Response**

