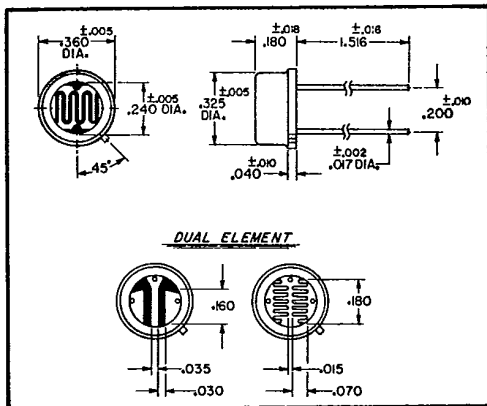


CL700 SERIES

HERMETICALLY SEALED

TO-5 CASE

- Maximum Power: 125mw @ 25°C
- Resistance Tolerance at 2ft-c: $\pm 33-1/3\%$
- 8 Photoconductive Materials
- Temperature Range: -50°C to $+75^{\circ}\text{C}$



TYPE	Sensitive Material	Peak Spectral Response (Angstroms)	Resistance @ 2ft-c (Ohms)	Min. Dark Resistance 5 sec. After 2 ft-c	Maximum Voltage Rating (Peak A.C.)	Measurement Voltage
CL702L	Type 2 CdS	5150	20K	1.3 Meg	100V	10V
CL703	Type 3 CdSe	7350	133K	880 Meg	300V	50V
CL703A			67K	440 Meg	300V	50V
CL703L			2.7K	18 Meg	100V	10V
*CL703L/2			6.5K	43 Meg	100V	10V
CL704	Type 4 CdSe	6900	30K	20 Meg	300V	20V
CL704L			0.6K	400K	100V	4V
*CL704L/2			1.5K	1 Meg	100V	10V
CL705	Type 5 CdS	5500	166K	11 Meg	300V	100V
CL705L			3.3K	220K	100V	10V
*CL705L/2			7.5K	500K	100V	15V
CL705HL	Type 5H CdS	5500	28K	18.7 Meg	100V	10V
CL705HL/2			67.5K	45 Meg	100V	10V
CL707	Type 7 CdS	6150	133K	88.7 Meg	300V	100V
CL707L			2.7K	1.8 Meg	100V	10V
CL707H	Type 7H CdS	6200	600K	335 Meg	300V	40V
CL707HL			10K	6.7 Meg	100V	8V
CL709L	Type 9 CdS	5500	28K	18.7 Meg	100V	10V

*Dual Element Cell matched to $\leq 20\%$

MEASUREMENT DATA • All measurements at 2854°K • Cells light adapted 16 hrs. at 30 ft-c prior to test • Measurement voltage is D.C. applied voltage for measuring resistance • All readings made at 25°C ambient.