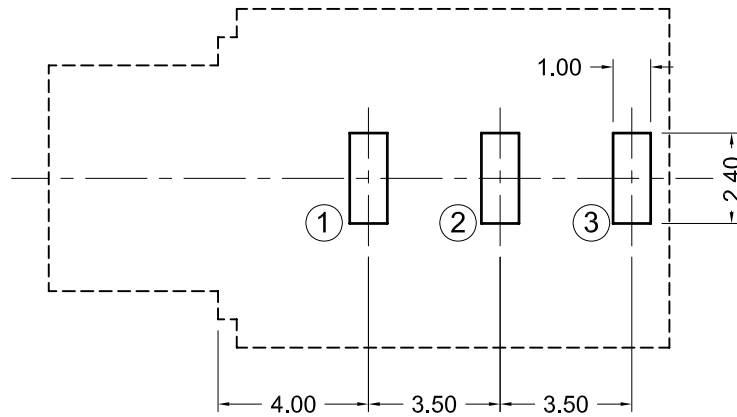
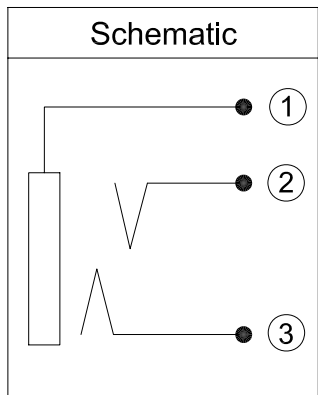


M6 Nut Included  
Packaged Separately



Recommended PCB Layout

**Materials and Finish**

Housing: PBT Thermoplastic  
15% Glass Filled, Black  
UL 94V-0 Rated

Terminals:  
Pin#1: SPCC, Tin plated  
Pin#2: Phosphor Bronze, Tin plated  
Pin#3: Brass, Tin plated

Bushing: Brass  
Nickel plated

**Mechanical Characteristics**

Insertion Force:  
0.4kg - 3.0kg

Extraction Force:  
0.3kg - 3.0kg

Durability: 5000 mating cycles

**Electrical Characteristics**

Contact Resistance:  
Before Test: 50mohms max.  
After Durability Test:  
100 mohms max.

Insulation Resistance:  
More than 100 Megohms  
at 500V DC

Dielectric Strength:  
500V AC RMS for 1 minute

Operating Temp:  
-25°C to +85°C

**Tolerances**

X.X ± 0.25  
X.XX ± 0.15  
Unless Stated  
Otherwise



REV.	DATE	DESCRIPTION	REV. BY	CHK. BY	DRAWN BY	DATE
A0	9/30/05	New Drawing	R. Aguirre	H. MA	R. Aguirre	07/14/05
A1	6/1/06	Release Drawing	H. MA	N/A		
A2	06/02/08	Add Nut Info.	S. Vien	H. MA		
					UNITS	
					mm	

**STX-3900-3CP**

3 Position Stereo Jack, RoHS Compliant  
With Threaded Bushing & Panel Stop

