

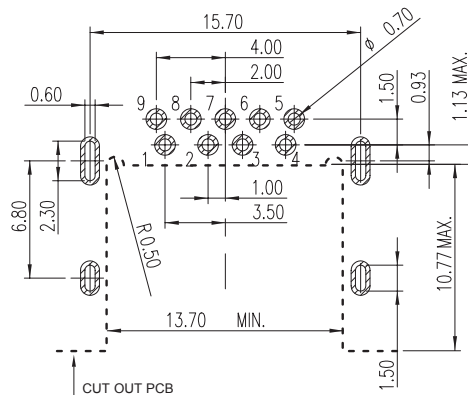
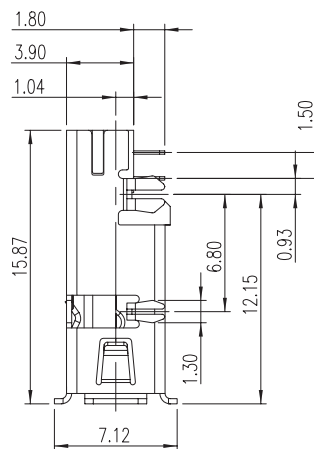
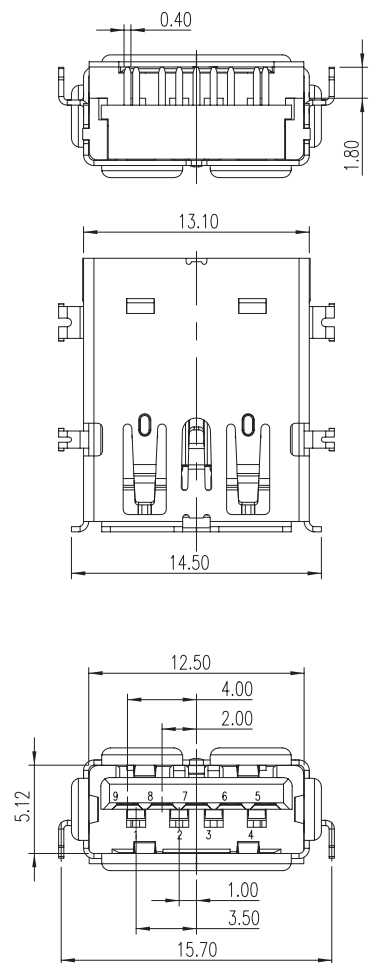
1

2

3

4

5



PCB LAYOUT - COMPONENT VIEW

TECHNICAL CHARACTERISTICS

MATERIAL

INSULATOR: LCP  
 FLAMABILITY RATING: UL94-V0  
 COLOR: BLUE  
 CONTACT MATERIAL: PHOSPHORE BRONZE  
 CONTACT TYPE: STAMPED  
 CONTACT PLATING: UNDERPLATE 1.27 to 2.54 μm Ni  
 CONTACT AREA 0.76 μm Gold  
 SOLDER TAIL AREA 2.54 to 5.08 μm Matt Tin  
 SHIELDING: BRASS MATT TIN PLATED

ENVIRONMENTAL

OPERATING TEMPERATURE: -20 up to +85°C  
 COMPLIANCE: RoHS & LEAD FREE AS PER DIRECTIVE 2002/95/EC  
 HALOGEN FREE COMPLIANT AS PER IEC 61249-2-21

ELECTRICAL

CURRENT RATING:  
 - PIN 1 & PIN 4 (Vbus & corresponding ground PIN) 1.8A Max  
 - OTHER PINS 0.25 A min  
 WORKING VOLTAGE: 30Vac  
 DIELECTRIC WITHSTANDING VOLTAGE: 100Vac/min  
 INSULATION RESISTANCE: > 100MΩ  
 CONTACT RESISTANCE:  
 - PIN 1 & PIN 4: 30mΩ Max  
 - OTHER PINS: 50mΩ Max  
 IMPEDANCE: 90Ω +/- 15Ω @ 50ps RISE TIME (20~80%)

MECHANICAL

INSERTION FORCE: 35.0N Max  
 EXTRACTION FORCE: 10.0N min  
 QUALITY CLASS: 5000 MATING CYCLES

SOLDERING

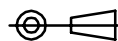
WAVE & REFLOW PROCESS AS PER JEDEC J-STD-020D

PACKAGING

TAPE & REEL

RoHS Compliant

PROJECTION:



GENERAL TOLERANCE

.X = +/- 0.2

.XX = +/- 0.15



APPROVAL: RJ

UNIT: MM

SCALE:

SHEET: 1/2

DRAW: JOE

DESCRIPTION: USB 3.0 HORIZONTAL TYPE A WITH OFFSET 1.04 MM

WERI PART NO: 692 121 230 100

SIZE

A4

G			
F			
E			
D			
C			
B			
A	16-SEP-10	PDF	JP
REV	DATE	FILE	BY

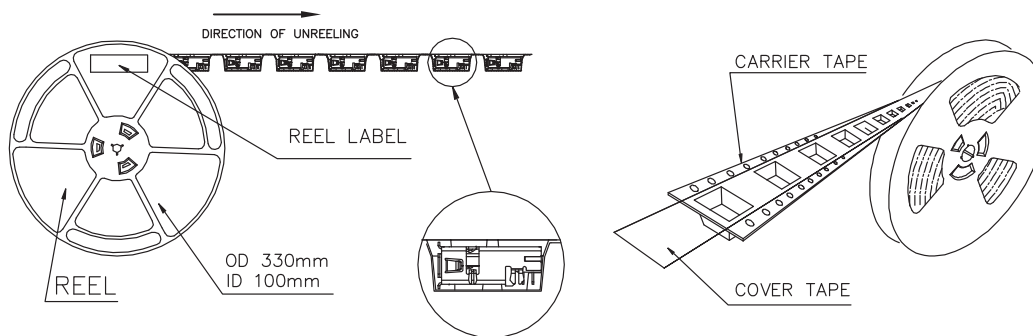
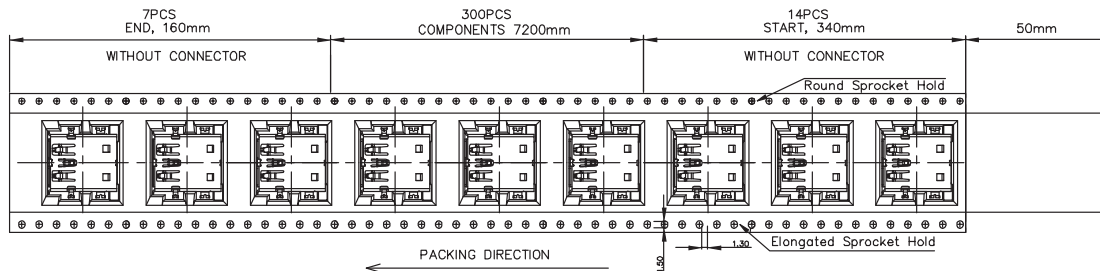
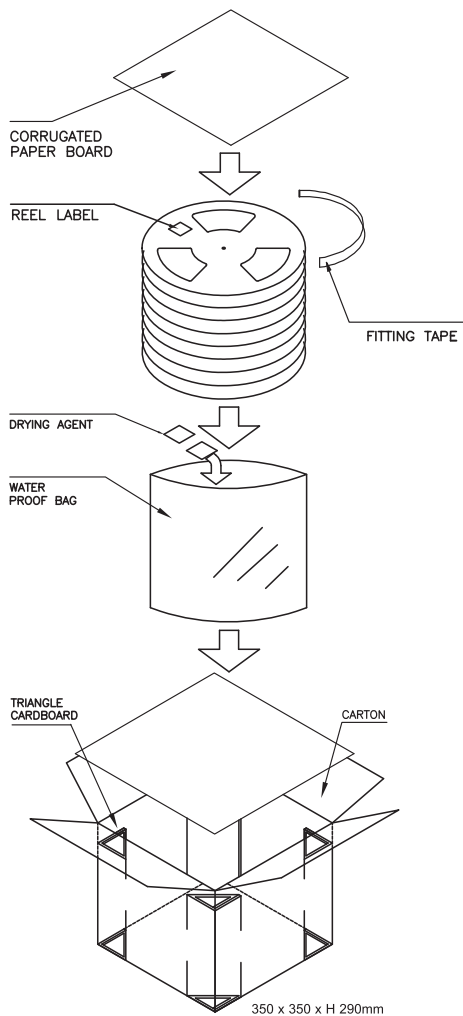
1

2

3

4

5



NOTES  
 1. MATERIALS: PS  
 2. 1500PCS/CARTON  
 3. RoHS  
 All Material in According With The Rohs Environment Related Substances List Controlled.

RoHS Compliant				PROJECTION: 	GENERAL TOLERANCE .X = +/- 0.2 .XX = +/- 0.15		DESCRIPTION: USB 3.0 HORIZONTAL TYPE A WITH OFFSET 1.04 MM	SIZE <b>A4</b>
G								
F								
E								
D				APPROVAL: RJ	UNIT: MM	WERI PART NO: 692 121 230 100		
C					SCALE:			
B					SHEET: 2/2			
A				DRAW: JOE				
REV	DATE	FILE	BY					