

Saturating Choke



Description

- Saturating choke
- THT-terminals
- Based on laminated iron core
- Fully potted resin

Standards

- EN 60938

Applications

- Phase angle control circuits with thyristors, triacs or transistors
- The choke acts at its optimum when it is mounted directly at the interference originator (thyristor, triac)

References

Weblinks

General Product Information, Approvals, RoHS, CHINA-RoHS, e-Store, SCHURTER-Stock-Check, Distributor-Stock-Check

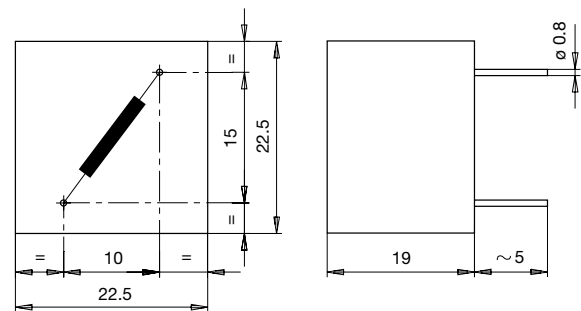
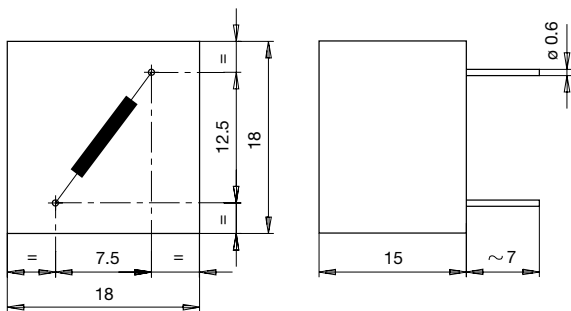
Technical Data

Rated voltage	up to 440VAC	Isolation Voltage	2 kV eff., winding to ambient
Rated Current	0.8 - 10A @ Ta 45 °C	Climatic Category	25/100/21 acc. to IEC 60068-1
Power Operating Frequency	50/60Hz	Allowable Operation Temp.	-25 °C to 100 °C
Terminal technic	THT, Flexible wire		
Weight	14 - 86g		
Material: Housing	UL 94V-0		
Sealing Compound	UL 94V-0		

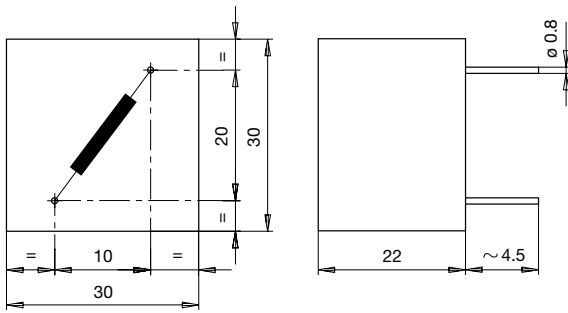
Dimensions

Case 00

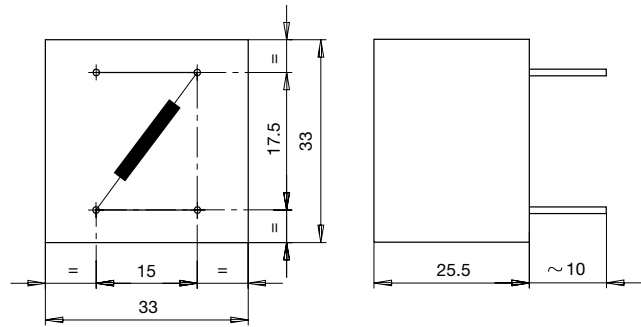
Case 08



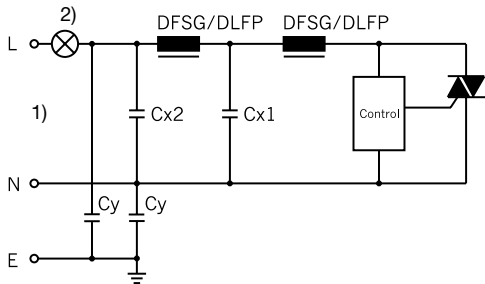
Case 17



Case 21

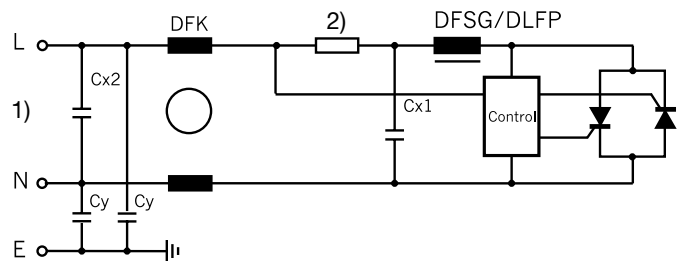


Diagrams



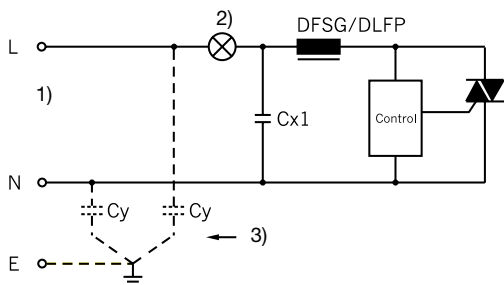
Interference suppression with resistive load, 2-phase

- 1) Line
- 2) Load



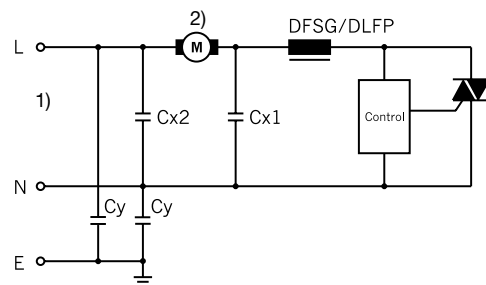
Interference suppression with resistive load, 2-stage

- DFSG: Radio interference suppression saturation choke
- DFK: Radio interference suppression choke magnetically condensed
- 1) Line
- 2) Load



Interference suppression with resistive load, < 10A, e.g. dimmers circuit (DFSG)

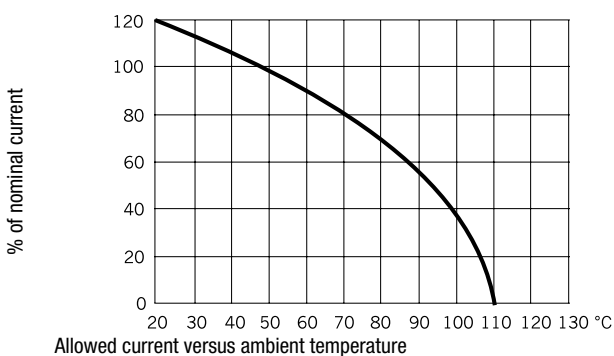
- 1) Line
- 2) Load
- 3) only to protection class I



Interference suppression with inductive load

- 1) Line
- 2) Load

Derating Curves



Variants

I_n [A]	L_n [mH]	Induc- tancedrop	R_{cu} [mΩ]	Weight [g]	Housing
0.8	-	-	1300	14	00
1.5	-	-	450	14	00
2	-	-	260	29	08
3	-	-	100	29	08
3	-	-	165	55	17
6	-	-	60	55	17
5	-	-	70	86	21
10	-	-	30	86	21