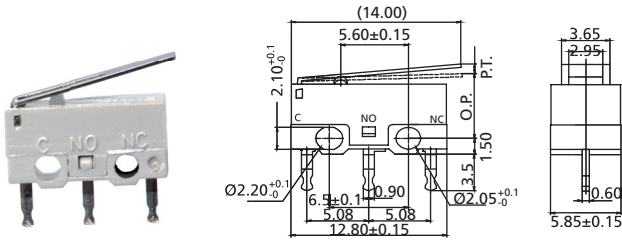


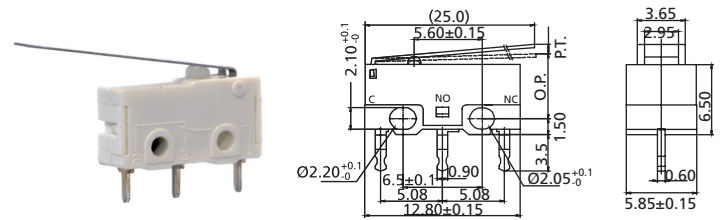
Micro Switches

Miniature SPST Micro Switches

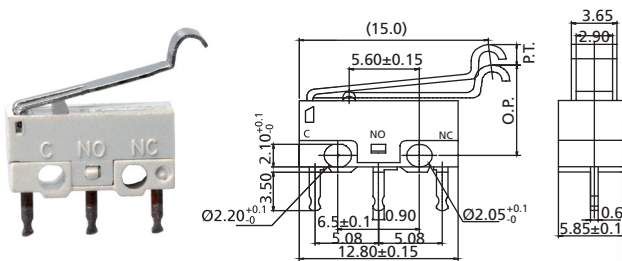
MP1 Series



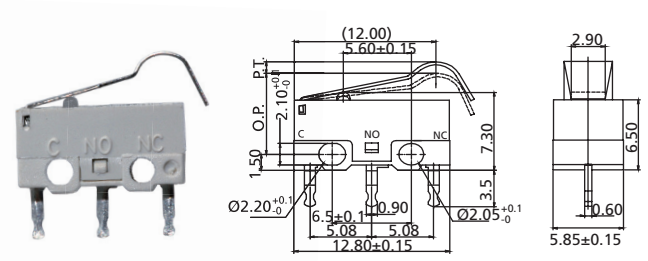
MP1_H01_ Lever Length = 14 mm



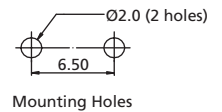
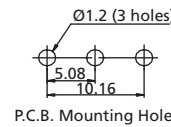
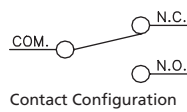
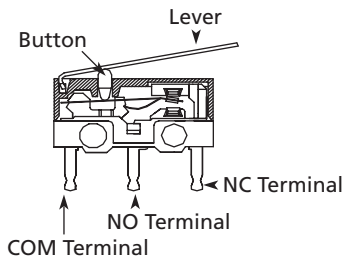
MP1_H02_ Lever Length = 25 mm



MP1_H04_ Simulated Lever 1



MP1_H04A_ Simulated Lever 2



O.P. (Operation Position): The position of the actuator at which the contact snap to the operated contact position
 F.P. (Free Position): The initial position on the actuator when there is no external force applied
 P.T. (Pretravel): The distance or angle through which the actuator moves from the F.P. to the O.P.
 O.T. (Over Travel): The distance or angle of the actuator movement beyond the O.P.
 R.P. (Releasing Position): The position of the actuator at which the contacts snap from the operated contact position to their normal position
 M.D. (Movement Differential): The distance or angle from O.P. to R.P.

How to order:

MP1

1 CURRENT RATING:

R1 0.1A 5VDC
 R2 1A 125VAC
 R3 3A 125VAC

2 CLOTHED MATERIAL:

AG Silver (Standard)
 AU Gold

3 TERMINAL

H P.C.B. Terminal Straight (Standard)

4 HINGED TYPE (See above drawings):

00 Pin Plunger
 01 Lever Length=14 mm
 02 Lever Length=25 mm
 04 Simulated Lever 1
 04A Simulated Lever 2

5 OPERATING FORCE

N Standard, 125±25gf
 L Low, 70±20gf

General Specifications:

FEATURES

- » SPST Micro Switch
- » Long Life Be-Cu spring mechanism
- » Large over travel
- » Small compact size
- » Insert molding in the contact prevent flux build-up during soldering and permits auto dipping

MATERIAL

- » Stationary Contact: Silver (3A)
 Brass+Ag (1A & 0.1A)
- » Movable Contact: Silver
- » Terminals: Brass+Ag
- » Actuating Spring: Ti-Cu

MECHANICAL

- » Type of Actuation: Momentary
- » Mechanical Life: 300,000 operations min.
- » Operating Temperature: -25°C to +105°C

ELECTRICAL

- » Electrical Life: 10,000 operations min.
- » Initial Contact Resistance: 50mΩ max.
- » Insulation Resistance: 100MΩ min.