



TAI-SAW TECHNOLOGY CO., LTD.

No. 3, Industrial 2nd Rd., Ping-Chen Industrial District,
Taoyuan, 324, Taiwan, R.O.C.

TEL: 886-3-4690038 FAX: 886-3-4697532

E-mail: tstsales@mail.taisaw.com Web: www.taisaw.com

Approval Sheet For Product Specification

Issued Date: April, 20, 2004

Product Name: SAW Filter 947.5 MHz SMD 3X3 mm

TST Parts No.:TA0361A

Customer Parts No.: _____

Company: _____
Division: _____
Approved by : _____
Date: _____

Checked by: _____ Bob Chau

Approval by: _____ Francis Chen

Date: _____ 4, 20, 2004



TAI-SAW TECHNOLOGY CO., LTD.

No. 3, Industrial 2nd Rd., Ping-Chen Industrial District,
Taoyuan, 324, Taiwan, R.O.C.

TEL: 886-3-4690038 FAX: 886-3-4697532

E-mail: tstsales@mail.taisaw.com Web: www.taisaw.com

SAW Filter 947.5 MHz for Mobile Communication

MODEL NO.: TA0361A

REV. NO.:1

A1. MAXIMUM RATING:

1. Input Power Level: 10 dB_m
2. DC voltage: 0 V
3. Operating Temperature: 25°C
4. Storage Temperature: -40°C to +85°C

RoHS Compliant
Lead free
Lead-free soldering

B1. ELECTRICAL CHARACTERISTICS:

Item		Min.	Typ.	Max.
Center frequency	F_c (dB)	-	947.5	-
Insertion loss (935~960 MHz)	IL (dB)	-	2.4	3.0
Amplitude ripple (935~960 MHz)	(dB)	-	1.0	2.0
Attenuation (Reference level from 0 dB)				
D.C. ~ 890 MHz	(dB)	28.0	32.0	-
890 ~ 915 MHz	(dB)	20.0	35.0	-
980 ~ 1025 MHz	(dB)	15.0	30.0	-
1025 ~ 2000 MHz	(dB)	30.0	34.5	-
Input/Output VSWR (935~960 MHz)		-	1.9	2.1
Source impedance	Z _s (Ω)	-	50	-
Load impedance	Z _L (Ω)	-	50	-

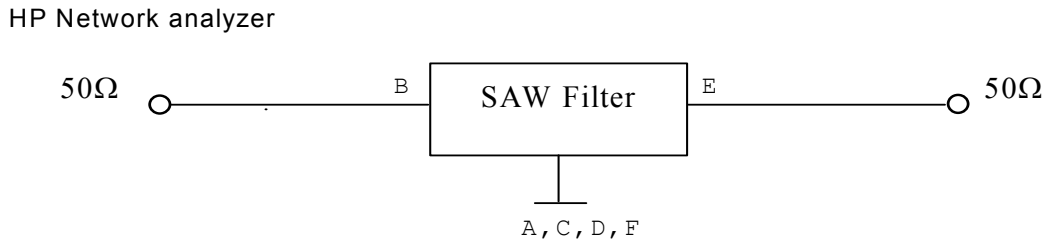
A2. MAXIMUM RATING:

1. Input Power Level: 10 dB_m
2. DC voltage: 0 V
3. Operating Temperature: -30°C to +85°C
4. Storage Temperature: -40°C to +85°C

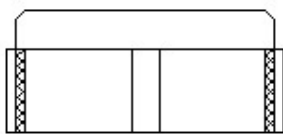
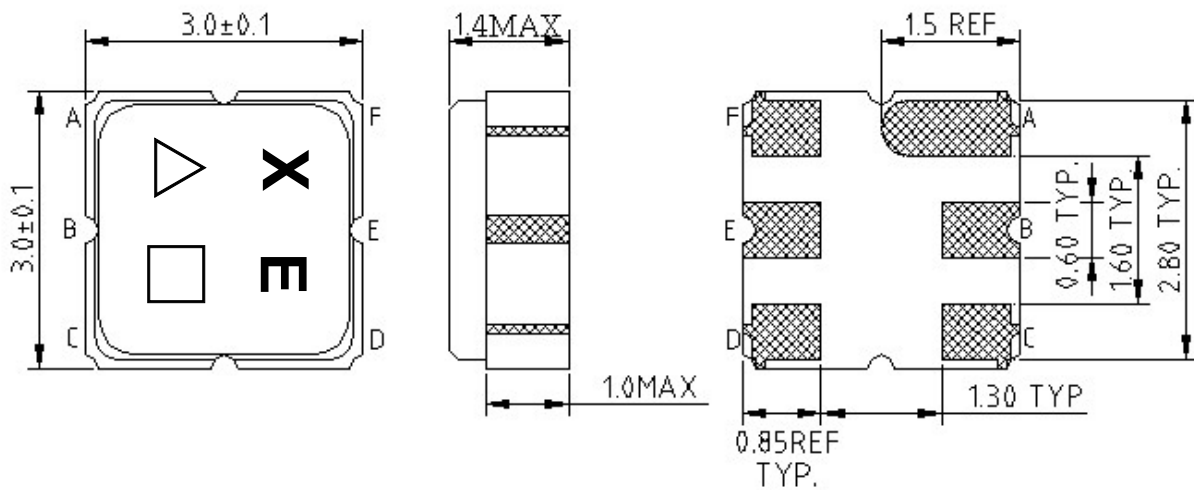
B2. ELECTRICAL CHARACTERISTICS:

Item		Min.	Typ.	Max.
Center frequency	F_c (dB)	-	947.5	-
Insertion loss (935~960 MHz)	IL (dB)	-	2.4	3.0
Amplitude ripple (935~960 MHz)	(dB)	-	1.0	2.0
Attenuation (Reference level from 0 dB)				
D.C. ~ 890 MHz	(dB)	28.0	32.0	-
890 ~ 915 MHz	(dB)	20.0	35.0	-
980 ~ 1025 MHz	(dB)	15.0	30.0	-
1025 ~ 2000 MHz	(dB)	30.0	34.5	-
Input/Output VSWR (935~960 MHz)		-	2.0	2.2
Source impedance	Z _s (Ω)	-	50	-
Load impedance	Z _L (Ω)	-	50	-

C. MEASUREMENT CIRCUIT:



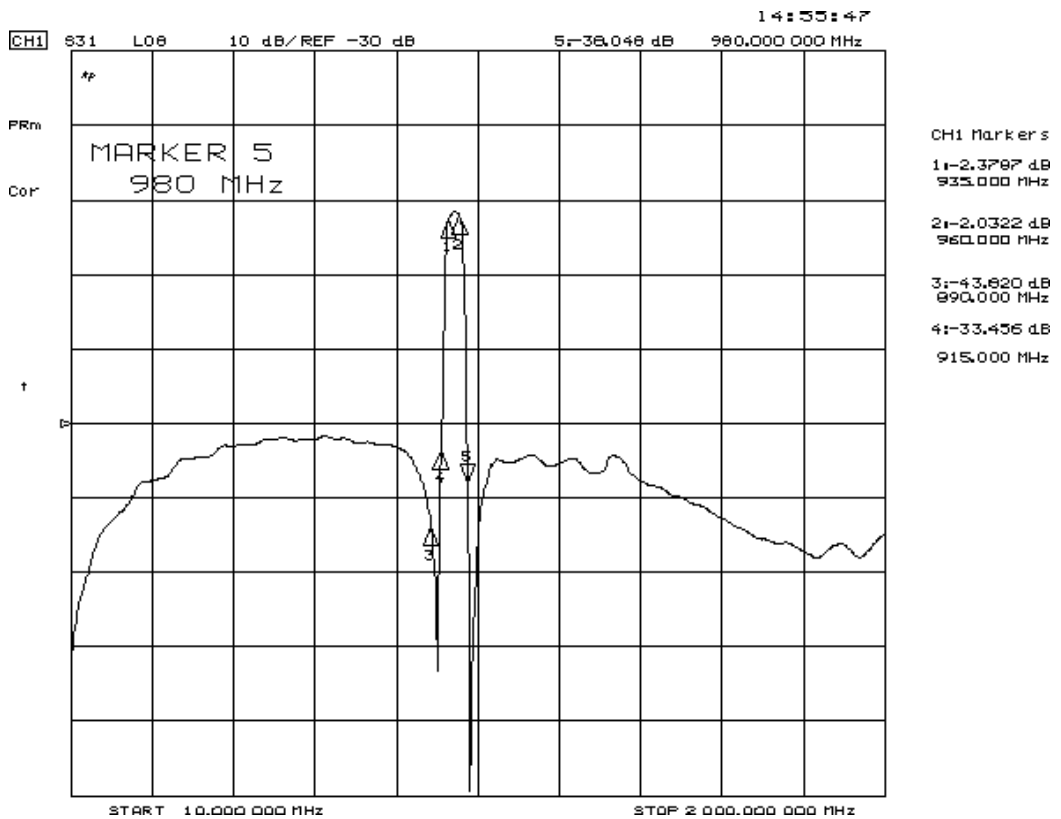
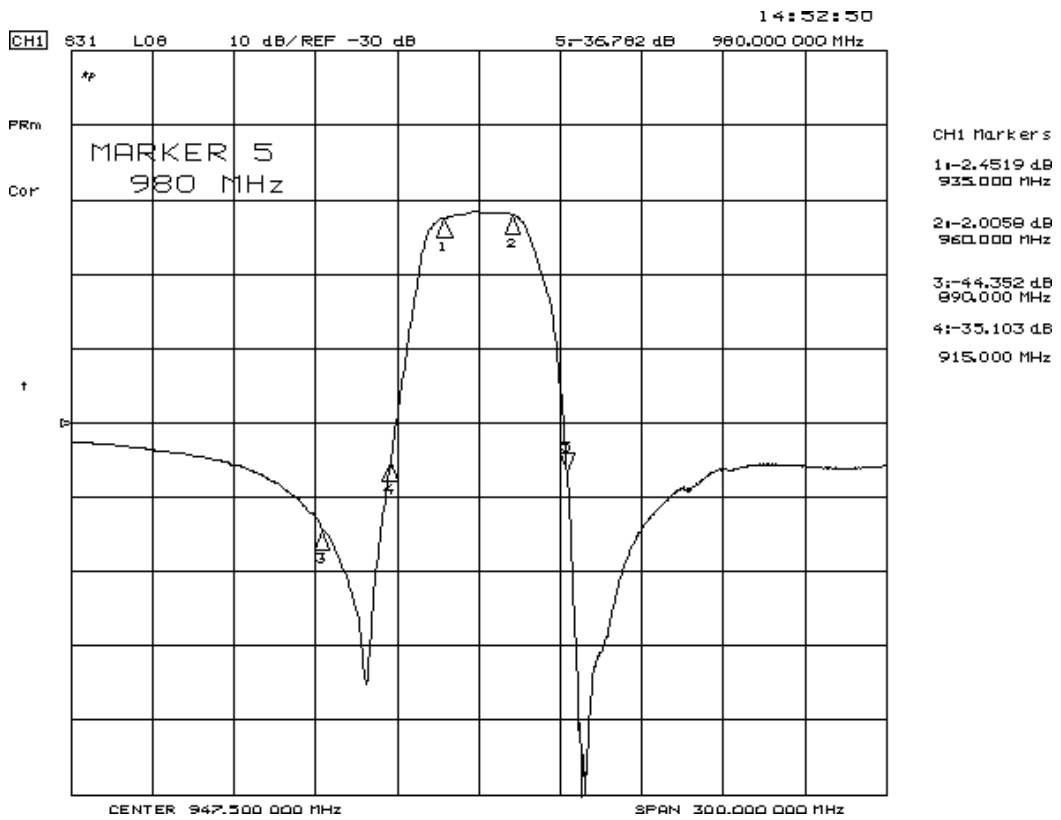
D. OUTLINE DRAWING:



B INPUT
 E OUTPUT
 A,C,D,F GROUND
 DIMENSION : mm

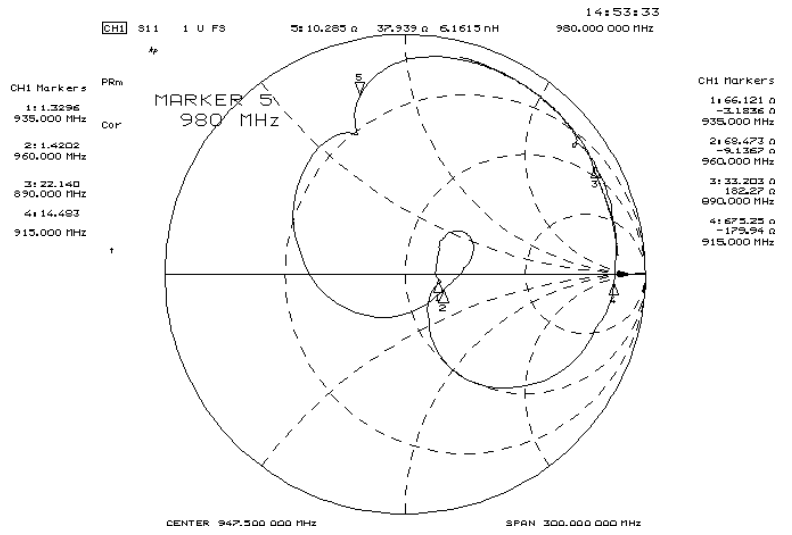
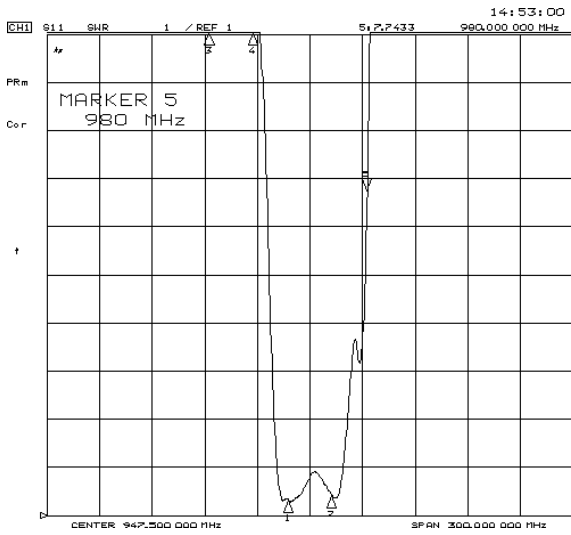
△ : Year Code
 □ : Date Code

E. Frequency Characteristics : Transfer function

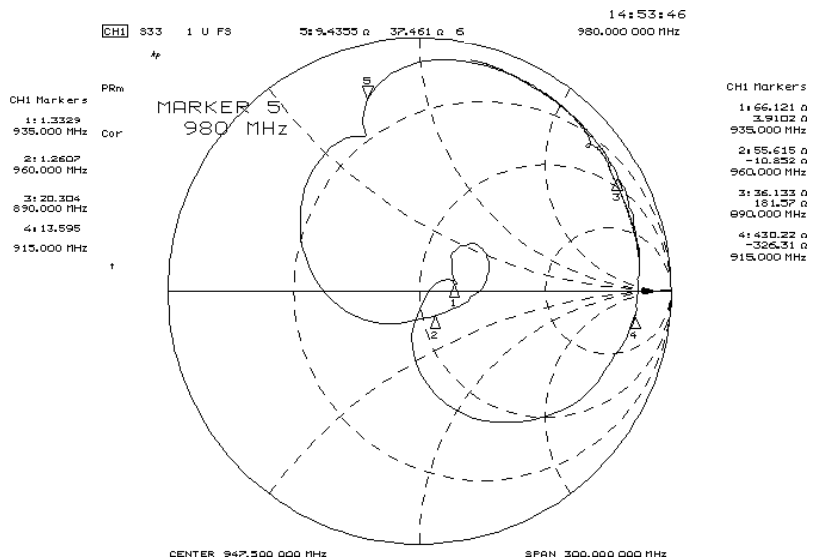
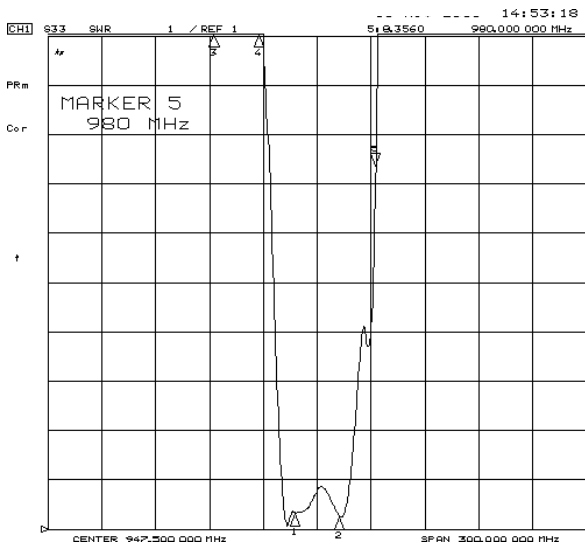


Reflections Functions :

S11

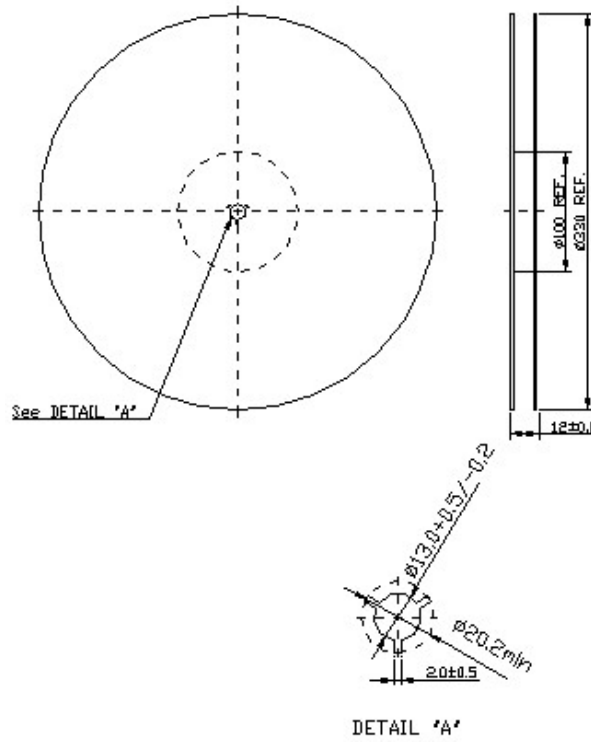


S22



F. PACKING:

1. REEL DIMENSION



2. TAPE DIMENSION

