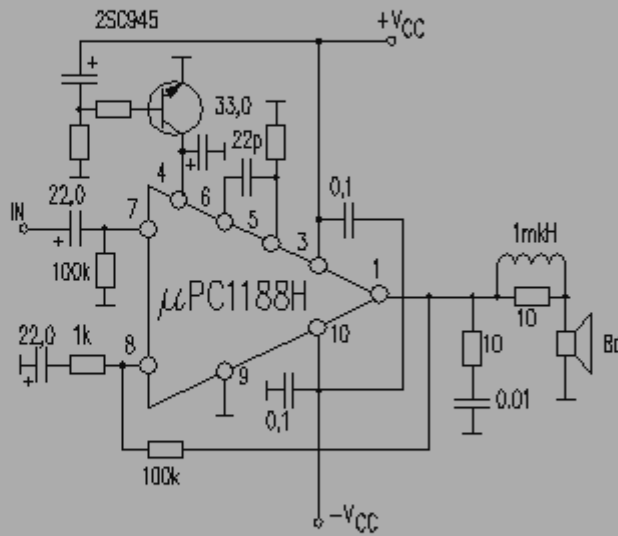


μ PC1188H

POWER AMPLIFIER 18W



$V_{CC\ MAX} = \pm 30V$
 $V_{CC\ TYP} = \pm 22V$
 $V_{CC\ RNG} = \pm 17... \pm 23V$

$P_D = 18W$

$R_L = 8\ \Omega$

$TDH = 0,1\%$

$I_{CCO\ TYP} = 60mA$

$I_{CCO\ MAX} = 120mA$

$I_{MAX} = -$

$R_{IN} = -$

Gain = 40dB

Noise = -

$R_{TH-C} = 3C/W$

Case SIP12H3