

[MAIN MENU](#)
[HELP](#)

[FAMILIES](#)
[RETURN TO SHOPPING CART](#)

AMP Connect

[\[ENGLISH\]](#)
[FRANÇAIS](#)
[DEUTSCH](#)
[ITALIANO](#)
[ESPAÑOL](#)
[日本語](#)
[中文](#)
[한국어](#)

Alphabetical
SEARCH


Picture
SEARCH

Part Number
SEARCH

Y2K - OK

Go To Step Search™ Screen

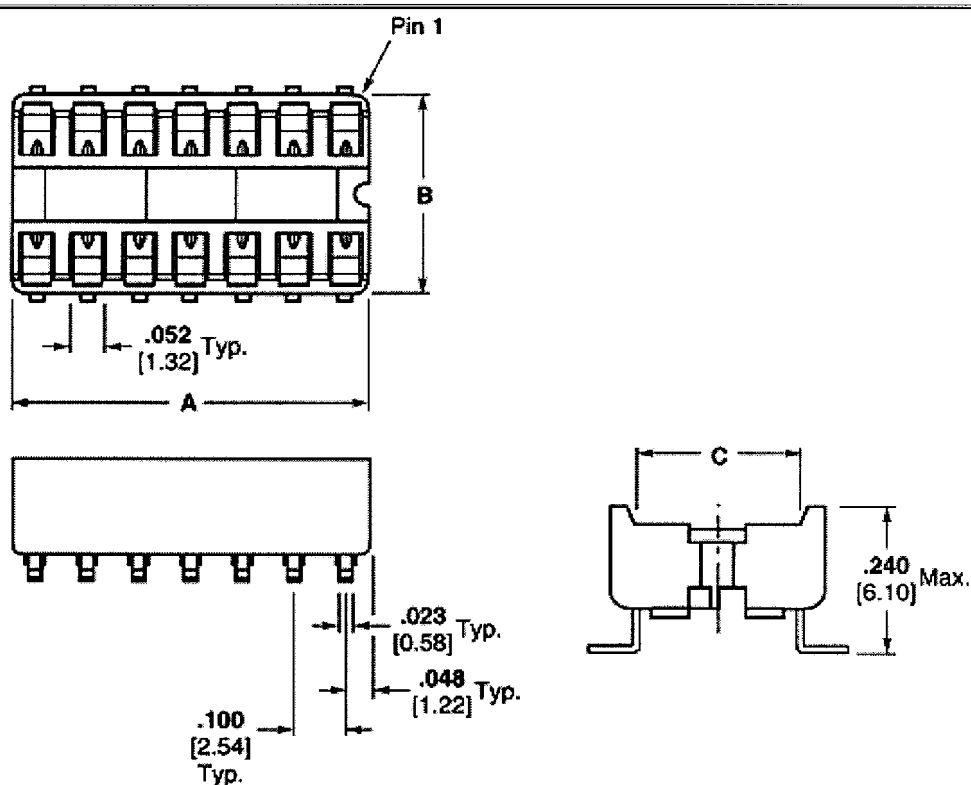
2-382402-3 -- 1 of 1 products


Active

General **INFO**
INFO
SUBCONTACTORS
SPECIFICATIONS

IC Sockets
DIP Sockets

Please use Customer Drawing or CAD file for design activity; line art and other pictures are general representations of product dimensions.



Line art represents typical product only.

➤ [Rec. Mounting Dimensions](#)

➤ [Product Photo](#)

Searchable Features:	
Product Type	Socket
No. of Positions	14
Row-to-Row Spacing	.350 [8.89] in. [mm]
Profile	Standard
Contact Mount	Surface Mount
Frame Style	Ladder

Leg Style	Surface Mt. 90° bend
Contact Material	Phosphor Bronze
Contact Plating	Tin
Contact Style	Stamped + Formed
Max. Height Above PCB	.205 [5.20] in. [mm]
Temperature Rating	105° C
Packaging Method	Tube
<i>Other Properties:</i>	
AMP Proprietary Name	DIPLOMATE DL
Dim. A	.695 [17.65] in. [mm]
Dim. B	.394 [10.01] in. [mm]
Dim. C	.321 [8.15] in. [mm]
Dim. D	.350 [8.89] in. [mm]
Product Series	Standard
Socket Type	Dual Leaf-SMT
Color	Brown
Centerline	.100 [2.54] in. [mm]
Housing Material	PCT Glass Reinforced
Housing Flammability Rating	UL 94V-0
Operating Temperature	-55° to +105°C
Application	Production
Qty./Tube	30
Qty. Tubes/Box	100

[\[Main Menu \]](#) |
 [\[Help \]](#) |
 [\[Family Search \]](#) |
 [\[Return to Shopping Cart \]](#) |
 [\[Feedback \]](#)

[Top of Page](#)