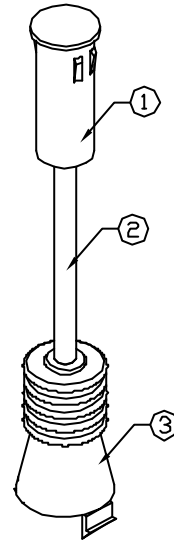
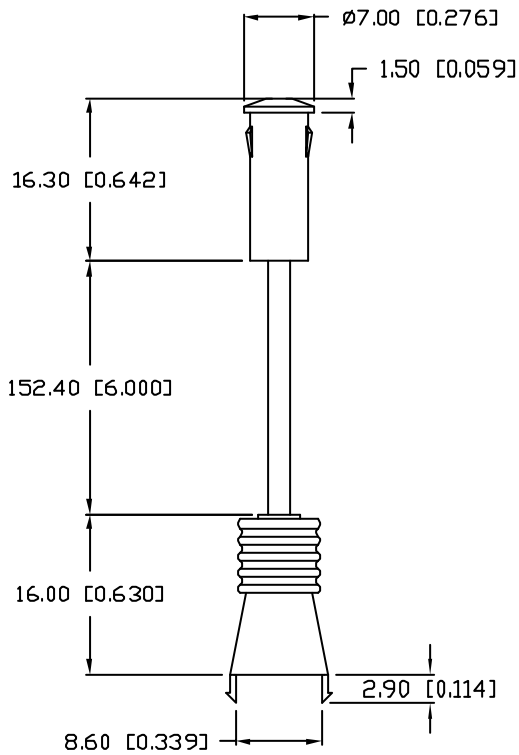


UNCONTROLLED DOCUMENT

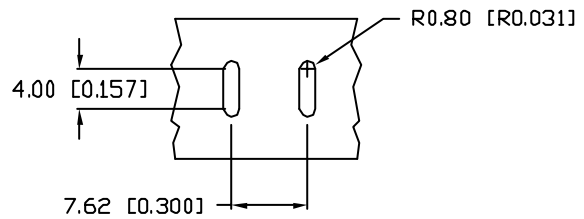
PA
LPI-C01

REV.	E.C.N. NUMBER
A	#11148.

PANEL CUT OUT: $\phi 6.00\text{mm}$.
PANEL THICKNESS: 1.80mm ~ 4.80mm.



RECOMMENDED PCB CUT OUT



NOTES:

1. LXP-LXM
2. LXP-LPI
3. LXP-HOT
4. RECOMMENDED PCB CUT OUT

*UNLESS OTHERWISE SPECIFIED TOLERANCES PER DECIMAL PRECISION ARE: X=±1 (±0.39), XX=±0.5 (±0.020), XXX=±0.25 (±0.010), XXXX=±0.127 (±0.005). LEAD SIZE=±0.05 (±0.002), LEAD LENGTH=±0.05 (±0.002).

UNCONT.

REV.	PART NUMBER
A	LPI-C011701S-150G
SINGLE UNIT PANEL MOUNT FLEXIBLE LIGHT TRANSPORTER, GREEN LENS.	

CONFIDENTIAL INFORMATION
THE INFORMATION CONTAINED IN THIS DOCUMENT IS THE PROPERTY OF LUMEX INC. EXCEPT AS SPECIFICALLY AUTHORIZED IN WRITING BY LUMEX INC. THE HOLDER OF THIS DOCUMENT SHALL KEEP ALL INFORMATION CONTAINED HEREIN CONFIDENTIAL AND SHALL PROTECT SAME IN WHOLE OR IN PART FROM DISCLOSURE AND DISSEMINATION TO ALL THIRD PARTIES.

RELIABILITY NOTE
OUR MANY YEARS OF EXPERIENCE DATA ACCUMULATION INDICATE THAT SOLDER HEAT IS A MAJOR CAUSE OF EARLY AND FUTURE FAILURE. PLEASE PAY ATTENTION TO YOUR SOLDERING PROCESS.

LUMEX
It's Time to Shine in Work for you

DRAWN BY:	CHECKED:
JC	