

Crystal filter

QF21.4-12000/06



Application

- 6 pol filter
- i.f.- filter
- use in mobile and stationary transceivers

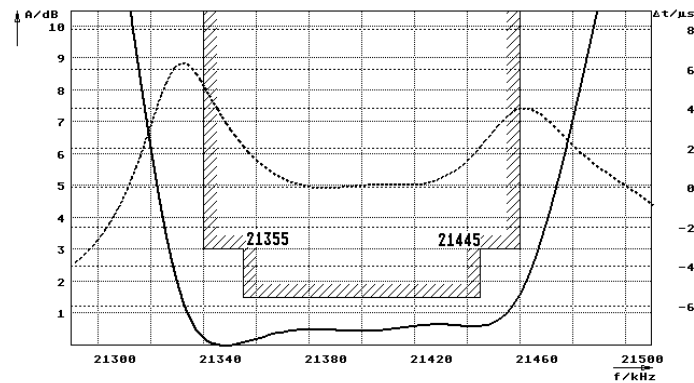
Limiting values		Unit	Value
Center frequency	Fo	MHz	21.4
Insertion loss		dB	≤ 9.0
Pass band at 3.0 dB		kHz	± ≥ 60.00
Ripple in pass band	fo ± 45.00 kHz	dB	≤ 1.5
Stop band attenuation	fo - 300 kHz	dB	≥ 60
	fo + 300 kHz	dB	> 40
	fo ± 400 kHz	dB	> 50
Alternate attenuation		dB	> 60 except spurious
IP3	fo±200kHz, fo±400kHz	dBm	> 32.5

Terminating impedance Z		Unit	Value
R1 C1		Ohm/pF	50 0
R2 C2		Ohm/pF	50 0

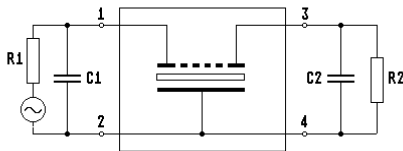
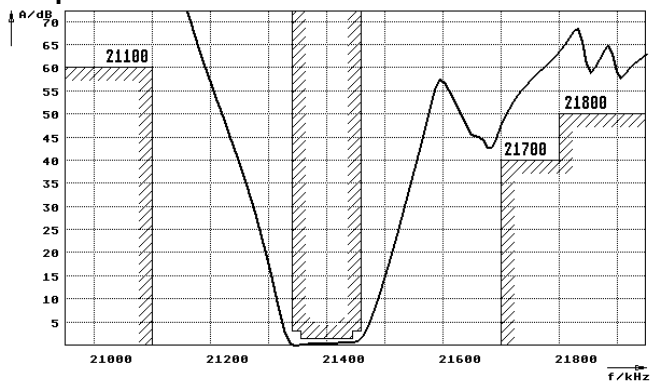
Operating temp. range	° C	Value
		-20... +70

Characteristics QF21.4-12000/06

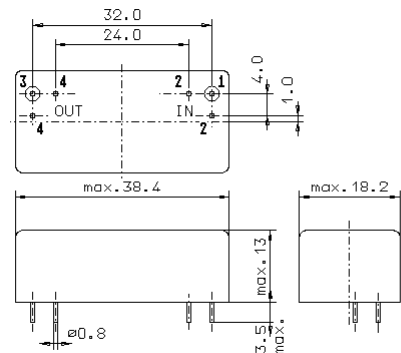
Pass band



Stop band



- Pin connections:
- 1 Input
 - 2 Ground-Input
 - 3 Output
 - 4 Ground-Output



GM17