

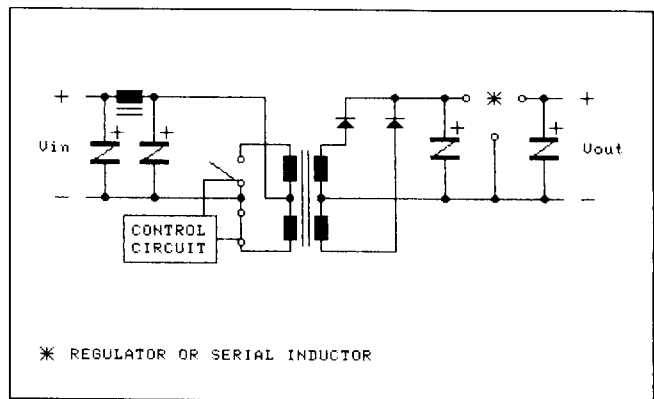
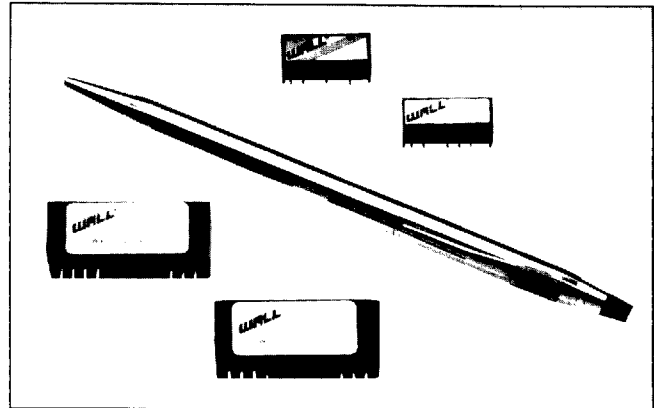
LAN E AND F SERIES TO 1.5 WATTS SIP

FEATURES

- Ultra Miniature SIP: 7 and 12 Pin Compatible
- Three Levels of I/O Isolation Available
- Single and Dual Outputs
- Low Reflected Ripple Current
- Regulated and Non-Regulated Versions
- Five Year Warranty

The LAN E and LAN F Series from Wall Industries

When board space is at a premium and voltage conversions require low power, the LAN E and LAN F Series, miniature converters, offer superior solutions for an economical cost. Between the two series, you have a multitude of options and operational ratings to choose from in custom-tailoring the converter to the demands of the application. Populating 0.179 or 0.516 sq. in. of board space, the LAN E and F Series, respectively, provide up to 1.5 watts of power while maintaining specifications over the entire commercial operation temperature range.



Single Simplified Schematic

SPECIFICATIONS

All specifications apply @ +25°C ambient unless otherwise noted.

INPUT SPECIFICATIONS

Input Voltage Range	5, 12, 15, 24VDC ± 10%
Input Filtering:	
LAN E	Low ESR Capacitors
LAN F	Pi Network
TTL Disable Voltage	0.8VDC maximum

OUTPUT SPECIFICATIONS

Output Current	see table
Voltage Tolerance	± 5% (nom. line, 100% load)
Regulation:	
Line: LANE/F Non-Regulated	± 1.2%/ % of Vin
Line: LAN F Regulated	± 0.5%
Load: LAN E/F Non-Regulated	± 8% (20% to 100% load)
Load: LAN F Regulated	± 0.5%
Ripple/Noise (20MHz BW):	
Non-Regulated	100mV P-P max.
Regulated	50mV P-P max.
Short Circuit Protection	Short Term

GENERAL SPECIFICATIONS

Efficiency (Typical) - Non-Regulated	72 to 85%
Regulated	55 to 65%
Isolation Voltage (input to output) LAN E	750VDC
LAN F	500 VDC or 3000VDC
Switching Frequency	20KHz (minimum)

ENVIRONMENTAL SPECIFICATIONS

Operating Temperature	0 to +71°C, -25 to +85°C (case) also available
Storage Temperature	-25 to +100°C
Cooling	Free air convection

PHYSICAL SPECIFICATIONS

Dimensions - LAN E	0.765 x 0.235 x 0.37"
Dimensions - LAN F	1.29 x 0.40 x 0.55"
Case Material	Non-conductive black plastic

Due to advances in technology, specifications subject to change without notice.

Wall Industries, Inc. • 5 Watson Brook Road • Exeter, NH 03833 • 603-778-2300 • FAX: 603-778-9797



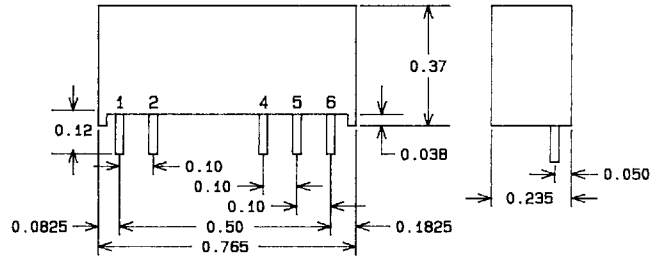
■ 9564164 0000256 7T9 ■

1

SINGLE/DUAL OUTPUT LAN E AND F SERIES

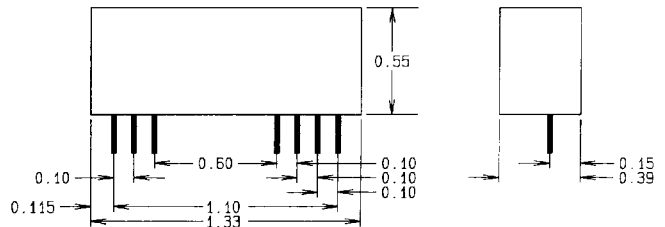
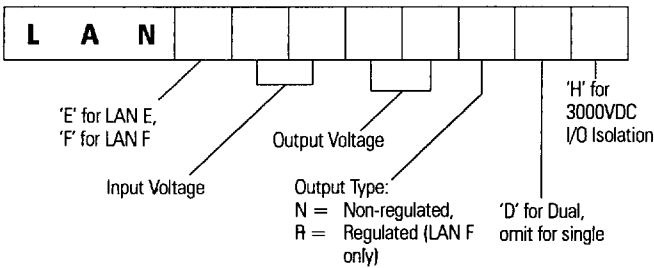
Available Input Voltages (VDC)	Output Voltage (VDC)	Output Current (mA)	LAN Series
5, 12, 15, 24 ± 10%	5	150	E
		300	F
	9	170	F
		250*	F
	12	60	E
		125	F
	15	50	E
		100	F
	24	65	F
		± 5	75
	± 12		100
		± 15	30
	± 15		60
		± 15	25
	± 15		50

*Models LANF509N and LANF1209N are designed for LAN with TTL enable.



	Single	Dual
1	+ Vin	+ Vin
2	- Vin	- Vin
4	- Vout	- Vout
5	Omitted	Common
6	+ Vout	+ Vout

How to Structure a Part Number



	TTL	Single	Dual
1	+Vin	+ Vin	+ Vin
2	- Vin	NC	- Vin
3	Enable	NC	NC
9	- Vout	NC	- Vout
10	- Vout	- Vout	Common
11	+ Vout	+ Vout	Common
12	+ Vout	- Vin	+ Vout

Notes

1. All case and pin-to-case dimensions reference only unless otherwise noted.