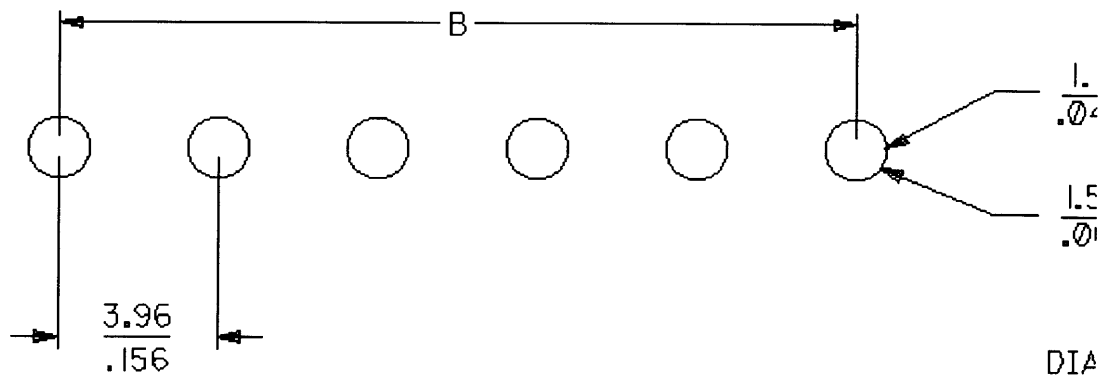
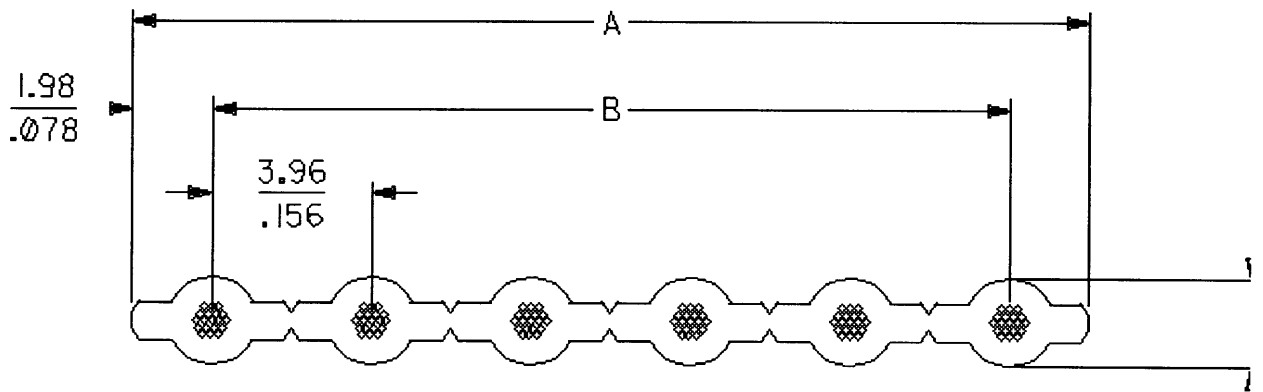
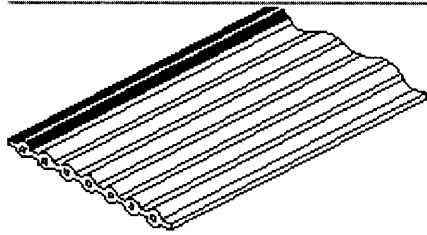


Flat Ribbon Cable 3.96mm (.156") Pitch Round Conductor Flat Cable - 22 AWG (7 x 30) Stranded, Tinned 7382



RECOMMENDED PCB LAYOUT

Above Drawing For Reference Only

ORDERING INFORMATION		
Circuits	Dimension mm (inches)	
	A	B
2	7.93 (.312)	3.96 (.156)
3	11.89 (.468)	7.93 (.312)

4	15.85 (.624)	11.89 (.468)
5	19.81 (.780)	15.85 (.624)
6	23.77 (.936)	19.81 (.780)
7	27.74 (1.092)	23.77 (.936)
8	31.70 (1.248)	27.74 (1.092)
9	35.66 (1.404)	31.70 (1.248)
10	39.62 (1.560)	35.66 (1.404)
11	43.59 (1.716)	39.62 (1.560)
12	47.55 (1.872)	43.59 (1.716)
13	51.51 (2.028)	47.55 (1.872)
Circuits	Dimension mm (inches)	
	A	B
14	55.47 (2.184)	51.51 (2.028)
15	59.44 (2.340)	55.47 (2.184)
16	63.40 (2.496)	59.44 (2.340)
17	67.36 (2.652)	63.40 (2.496)
18	71.32 (2.808)	67.36 (2.652)
19	75.29 (2.964)	71.32 (2.808)
20	79.25 (3.120)	75.29 (2.964)
21	83.21 (3.276)	79.25 (3.120)
22	87.17 (3.432)	83.21 (3.276)
23	91.14 (3.588)	87.17 (3.432)
24	95.10 (3.744)	91.14 (3.588)

ORDERING INFORMATION			
For Cables Series No.	Order No.		
	100' Reel	300' Reel	500' Reel
7382-XX	* 82-22-58XX	* 82-22-63XX	* 82-22-73XX
Replace "XX" with number of circuits, 02 - 24			

* US Standard Product available through Molex franchised distributors.