

bel/ defining a degree of excellence

DIGITAL DELAY LINE SERIES 0447 LOW POWER MODULE 20 MA TYP 5 TAP/FIXED DELAY

TECHNICAL INFORMATION

TEST CONDITIONS

Pulse Voltage 3.2 Volts
 Rise Time 3.0 Nsec (10%-90%)
 Pulse Width 1.2 X Total Delay
 Pulse Period 4 X Pulse Width
 Supply Current, I_{CC} 20.0 Milliamps max.
 Supply Voltage, V_{CC} 5.0 Volts
 Ambient Temperature 25°C

PERFORMANCE CHARACTERISTICS

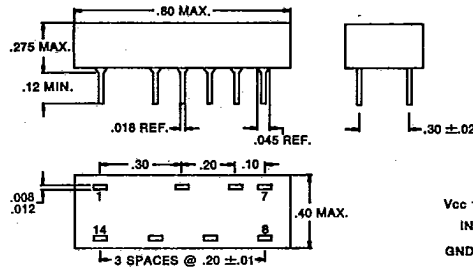
Logic 1 Input Current 20 Microamp max.
 Logic 0 Input Current -0.4 Milliamp max.
 Logic 1 Output Voltage 2.7 Volts min.
 Logic 0 Output Voltage 0.5 Volts max.
 Delay Tolerance From Input To Tap ±2 Nsec or 5% whichever is greater
 Delay Tolerance From Tap To Tap ±2 Nsec or 7% whichever is greater

All specified Performance Characteristics apply at above listed Test Conditions.

ELECTRICAL CHARACTERISTICS

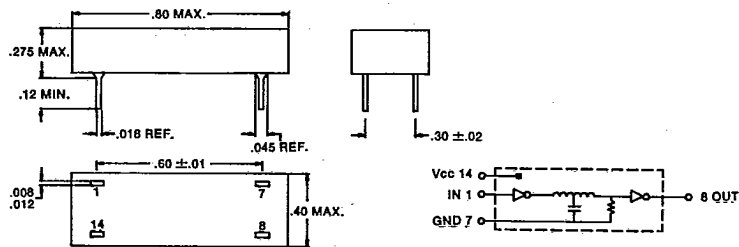
Supply Voltage, V_{CC} 4.75 to 5.25 Volts
 Operating Temperature Range 0°C To 70°C
 Temperature Coefficient Of Total Delay 500PPM/°C Typical
 Minimum Input Pulse Width 40% Of Total Delay
 Maximum Duty Cycle 50%
 10 TTL Loads/Tap max.
 20 TTL Loads/Unit max.

- Compatible with TTL and DTL circuits.
- Other delays and tolerances upon request



5 TAP

Part Number	Total Delay 1, 3	Delay / Tap 1, 3	Rise Time 2, 3
0447-0025-09	25NS	5NS	8NS
0447-0050-09	50NS	10NS	8NS
0447-0100-09	100NS	20NS	8NS
0447-0150-09	150NS	30NS	8NS
0447-0200-09	200NS	40NS	8NS
0447-0250-09	250NS	50NS	8NS
0447-0300-09	300NS	60NS	8NS
0447-0350-09	350NS	70NS	8NS
0447-0400-09	400NS	80NS	8NS
0447-0450-09	450NS	90NS	8NS
0447-0500-09	500NS	100NS	8NS



FIXED DELAY

Part Number	Total Delay 1, 3	Rise Time 2, 3	Part Number	Total Delay 1, 3	Rise Time 2, 3
0447-0010-08	10NS	8NS	0447-0125-08	125NS	8NS
0447-0020-08	20NS	8NS	0447-0150-08	150NS	8NS
0447-0030-08	30NS	8NS	0447-0175-08	175NS	8NS
0447-0040-08	40NS	8NS	0447-0200-08	200NS	8NS
0447-0050-08	50NS	8NS	0447-0250-08	250NS	8NS
0447-0060-08	60NS	8NS	0447-0300-08	300NS	8NS
0447-0070-08	70NS	8NS	0447-0350-08	350NS	8NS
0447-0080-08	80NS	8NS	0447-0400-08	400NS	8NS
0447-0090-08	90NS	8NS	0447-0450-08	450NS	8NS
0447-0100-08	100NS	8NS	0447-0500-08	500NS	8NS

1 Delays measured at 1.5 Volt level on Leading Edge only.
 2 Rise Times measured from .8 Volts to 2 Volts.
 3 Measured with no loads on taps.

Specifications Subject To Change Without Notice