

PLEASE CHECK WWW.MOLEX.COM FOR LATEST PART INFORMATION

Part Number: [0334820401](#)
Status: **Active**
Overview: [mx150 sealed connector system](#)
Description: 3.50mm (.138") Pitch MX150™ Sealed Male Connector, Dual Row, 4 Circuits, Polarization A, without Connector Position Assurance, Black

Documents:

[3D Model](#) [Product Specification PS-33472-000 \(PDF\)](#)
[Application Specification \(PDF\)](#) [RoHS Certificate of Compliance \(PDF\)](#)
[Drawing \(PDF\)](#)

General

Product Family	Crimp Housings
Series	33482
Comments	No Connector Position Assurance (CPA)
More Detailed Tech Information	http://ewcap.uscarteams.org
Overview	mx150 sealed connector system
Product Name	MX150™

Physical

Circuits (maximum)	4
Circuits Detail	4
Color - Resin	Black, Natural
Gender	Male
Glow-Wire Compliant	No
Keying to Mating Part	Yes
Lock to Mating Part	Yes
Material - Resin	Modified Polystyrene Alloy
Number of Rows	2
Packaging Type	Bag
Panel Mount	No
Pitch - Mating Interface (in)	0.138 In
Pitch - Mating Interface (mm)	3.50 mm
Polarized to Mating Part	Yes
Stackable	No
Temperature Range - Operating	-40°C to +125°C

Electrical

Current - Maximum per Contact	22A
-------------------------------	-----

Material Info

Reference - Drawing Numbers

Application Specification	AS-33472-100
Packaging Specification	PK-31300-635
Product Specification	PS-33472-000
Sales Drawing	ES-E1AB-14A485-AA, SD-33482-041



EU RoHS

ELV and RoHS Compliant
REACH SVHC Contains SVHC: No
Halogen-Free Status
Not Reviewed

China RoHS



Need more information on product environmental compliance?

Email productcompliance@molex.com
 For a multiple part number RoHS Certificate of Compliance, [click here](#)

Please visit the [Contact Us](#) section for any non-product compliance questions.

Search Parts in this Series

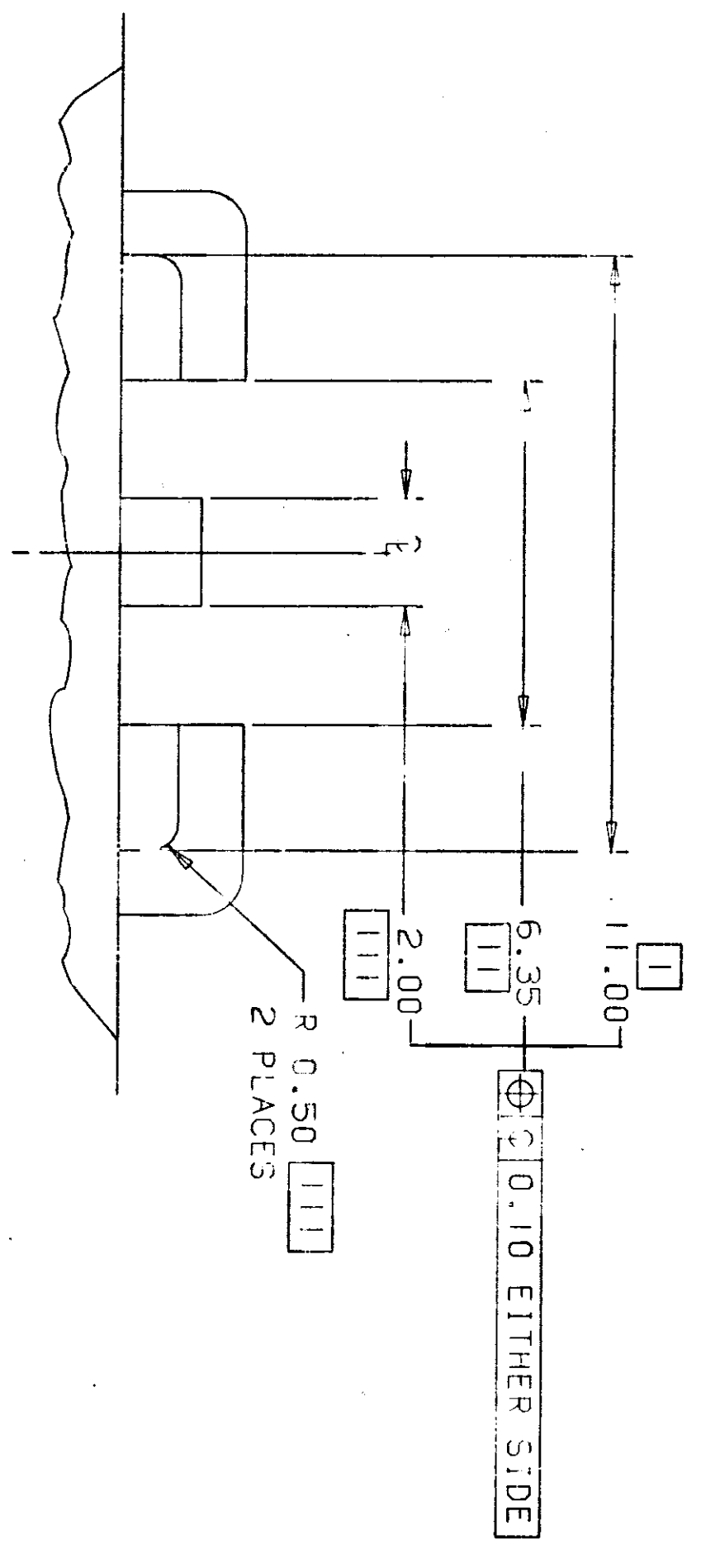
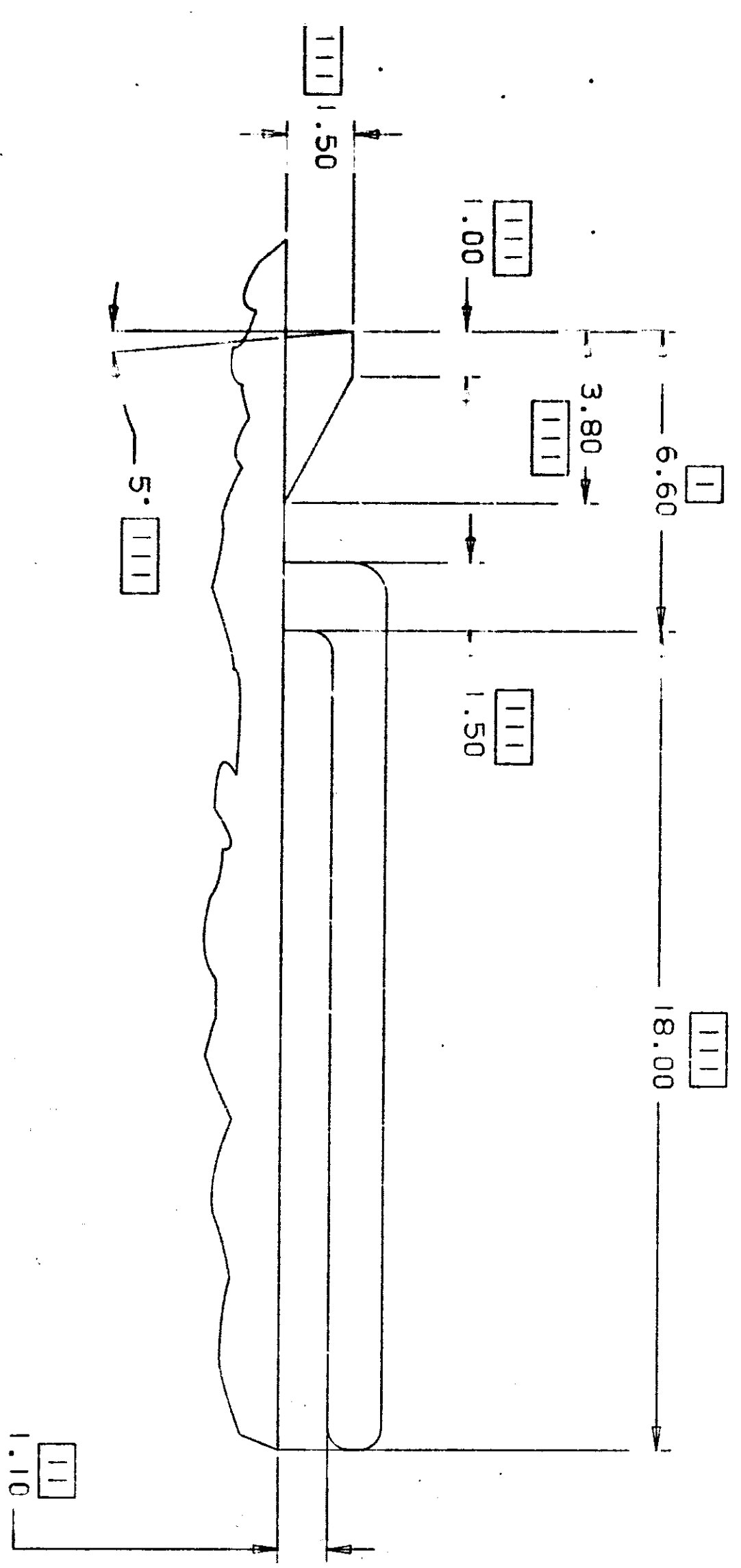
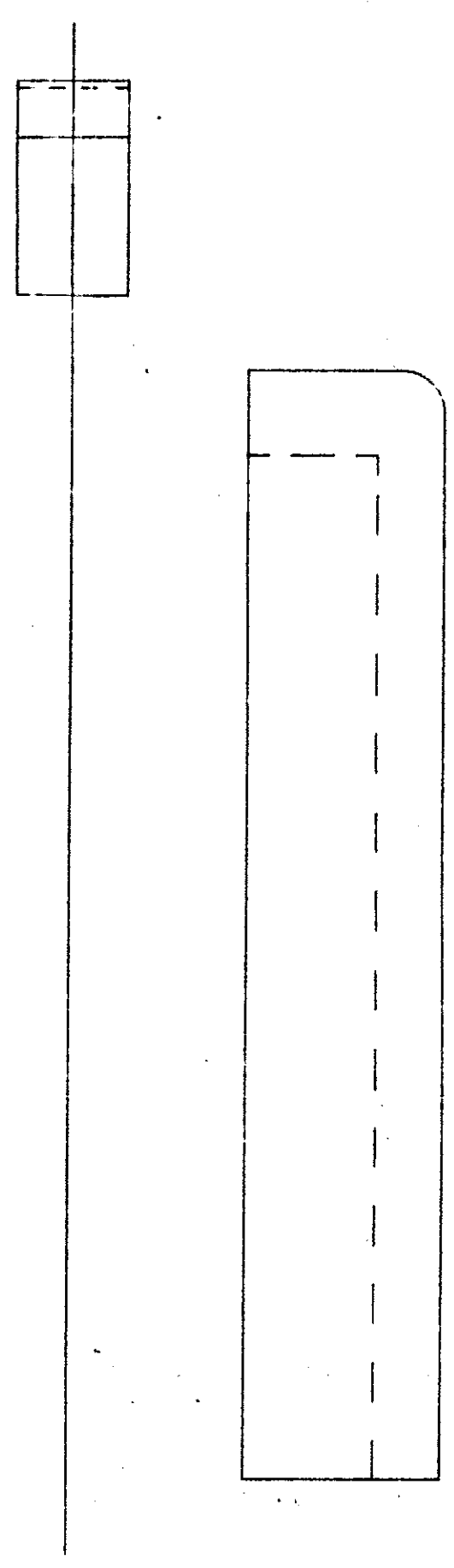
[33482Series](#)

Mates With

[33472](#) Female Dual Row Sealed Connector

Use With

[33000](#) MX150™ Tin (Sn) Male Terminal,
[33011](#) Gold (Au) Male Terminal



VIEW OF WIRE END OF CONNECTOR

NOTES: UNLESS OTHERWISE SPECIFIED

- GENERAL TOLERANCES:
- ±0.10 ALL TWO PLACE DIMENSIONS
- ±0.3 ALL ONE PLACE DIMENSIONS
- ±1.0° ALL ANGULAR DIMENSIONS
- 0.5° MAXIMUM DRAFT ANGLE
- 0.3 MAXIMUM RADIUS PERMISSIBLE ON ALL EDGES AND FILLETS SHOWN AS SHARP
- ALL RADI: 0.8
- WALL THICKNESS 1.3-1.0

DATE LET	REVISIONS	DR	CK	APP
11-18-77	RELEASED COMPLETE			
	AKI-6000 # 86			

NO. ES-EIAB-14A485-AA

SPIND PRODUCT ENGINEERING

MILLIMETRES ON ORIGINAL FORMAT	1:1
10	20
30	40
50	60
70	80
90	100
110	120
130	140

DO NOT SCALE ABOVE SCALE FOR REFERENCE ONLY

DRAWN BY	DATE	CHECKED	SCALE	APPROVED	CODE
Janice	11-8-77	CE	1/2N	MA	

UNLESS OTHERWISE SPECIFIED DIMENSIONS ARE IN MILLIMETRES

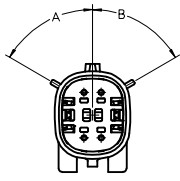
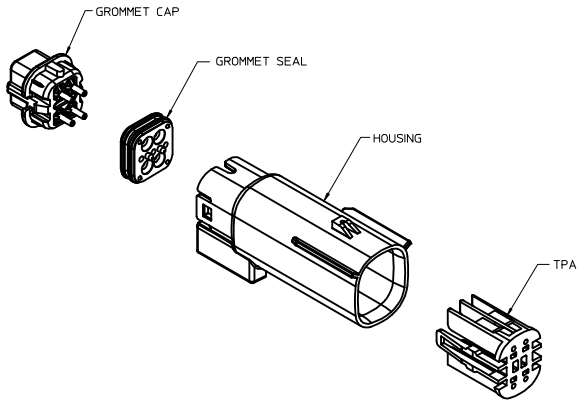
3rd ANGLE PROJECTION

MATERIAL: _____

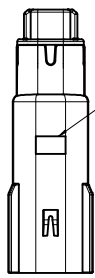
DATE: _____

NAME: SPECIFICATION - RETAINER - WIRE CONNECTOR SLEEVE

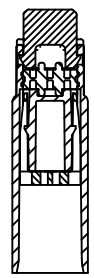
NO. ES-EIAB-14A485-AA



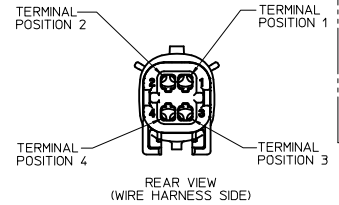
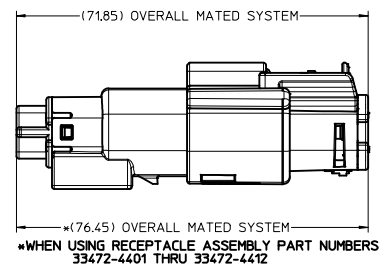
KEYING OPTION
SEE TABLE
SCALE 2:1



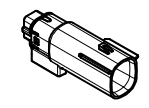
OPTIONAL TRACEABILITY
INFORMATION LOCATED IN
THIS AREA



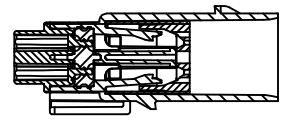
SECTION A-A



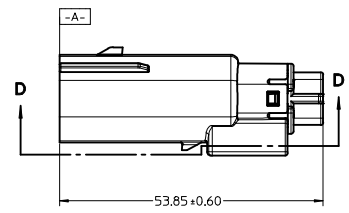
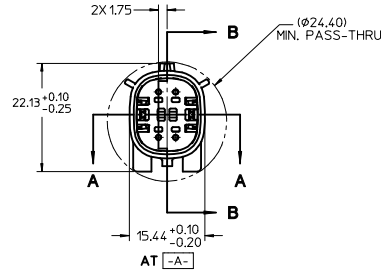
TERMINAL POSITION 2
TERMINAL POSITION 1
TERMINAL POSITION 4
TERMINAL POSITION 3
REAR VIEW
(WIRE HARNESS SIDE)



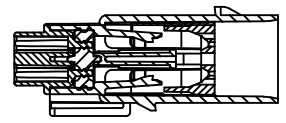
SCALE 1:1



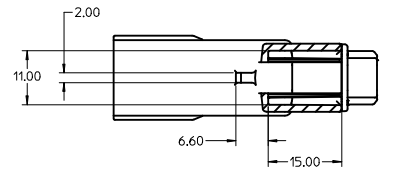
SECTION B-B
(BLADE INSERT SHOWN IN FULL-LOCK POSITION)
SEE NOTE 2



SECTION D-D



SECTION B-B
(BLADE INSERT SHOWN IN PRE-LOCK POSITION)
SEE NOTE 2



NOTES: UNLESS OTHERWISE SPECIFIED

- DESIGNED TO MATE WITH RECEPTACLE HOUSING ASSEMBLY SPECIFIED IN MOLEX CHARTED DRAWING SD-33472-041.
- ASSEMBLY SHIPPED WITH BLADE INSERT IN PRE-LOCK POSITION (SEE SECTION C-C PRE-LOCK). UPON FULL TERMINAL ASSEMBLY, EACH BLADE INSERT MUST BE SNAPPED INTO ITS FINAL-LOCK POSITION.
- FOR BLADE TERMINALS TO BE USED WITH THIS ASSEMBLY, SEE DRAWING SD-33000-001.
- SYSTEM TO BE USED WITH WIRE WITHIN DIAMETER RANGE OF 1.5mm TO 2.5mm.
- MATERIAL: SPS/NYLON BLEND, 20% GLASS FILLED.
- CHENGDU ASSEMBLIES SHALL CONFORM TO PACKAGING SPECIFICATION PK-31300-635
- SHALL CONFORM TO PRODUCT SPECIFICATION PS-33472-000.
- ASSEMBLY CONFORMS TO SAE/USCAR-2 REV 4 WITH THE FOLLOWING EXCEPTIONS: TERMINAL INSERTION FORCE FOR WIRE SIZE ABOVE 2.5mm NOT EXCEEDING 2.69mm SHALL NOT EXCEED 45 NEWTONS.
- REFER TO SHEET #2 FOR ALL PART NUMBER OPTIONS

REDRAWN IEC NO. UAU2010-0100 DRAWN BY: FF ITHS 2009/08/06 CHKD BY: VERZYL 2009/08/06 APPR: VIOSHY 2009/08/12 REVISION DESCRIPTION	QUALITY SYMBOLS ▽=0 ▽=0		GENERAL TOLERANCES (UNLESS SPECIFIED)		DIMENSION STYLE MM ONLY		SCALE 2:1		DESIGN UNITS METRIC		THIRD ANGLE PROJECTION	
	4 PLACES ± mm ± INCH 3 PLACES ± --- ± --- 2 PLACES ± 0.10 ± --- 1 PLACE ± 0.3 ± ---		ANGULAR ± 3 °		DRAWN BY: MYANSLAMBROU 04-27-06 CHECKED BY: DATE DGRIFFI THS 06-22-06 APPROVED BY: DATE SMARCEAU 06-22-06		MATERIAL NO.		DOCUMENT NO.		TITLE MX150 BLADE CONNECTOR ASSEMBLY 2 ROW SEALED 4 WAY	
	DRAFT WHERE APPLICABLE MUST REMAIN WITHIN DIMENSIONS		SEE TABLE		MOLEX INCORPORATED		SD-33482-041		SHEET NO. 1 OF 2		THIS DRAWING CONTAINS INFORMATION THAT IS PROPRIETARY TO MOLEX INCORPORATED AND SHOULD NOT BE USED WITHOUT WRITTEN PERMISSION	
	SIZE D		SEE TABLE		MOLEX INCORPORATED		SD-33482-041		SHEET NO. 1 OF 2		THIS DRAWING CONTAINS INFORMATION THAT IS PROPRIETARY TO MOLEX INCORPORATED AND SHOULD NOT BE USED WITHOUT WRITTEN PERMISSION	

ASSEMBLY PART NUMBER	COLOR	KEYING OPTION	DIMENSIONS (DEGREES)		CAVITY TYPE & STATUS (X = PLUGGED)				STATUS	COMMENTS
			A	B	1	2	3	4		
33482-0401	BLACK	A	60	60					SALEABLE	RECOMMENDED, TEMPERATURE CLASS 4 (-40°C TO 150°C)
33482-0402	LIGHT GRAY	B	40	60					SALEABLE	RECOMMENDED, TEMPERATURE CLASS 4 (-40°C TO 150°C)
33482-0403	BROWN	C	60	40					DESIGN CONCEPT	NOT RECOMMENDED, USE 33482-4403, SAME KEY IN DIFFERENT COLOR
33482-0404	GREEN	D	40	40					DESIGN CONCEPT	NOT RECOMMENDED, USE 33482-4404, SAME KEY IN DIFFERENT COLOR
33482-0406	BLACK	A	60	60			X		SALEABLE	RECOMMENDED, TEMPERATURE CLASS 4 (-40°C TO 150°C)
33482-0407	LIGHT GRAY	B	40	60			X		SALEABLE	RECOMMENDED, TEMPERATURE CLASS 4 (-40°C TO 150°C)
33482-0408	BROWN	C	60	40			X		DESIGN CONCEPT	NOT RECOMMENDED, USE 33482-4405, SAME KEY IN DIFFERENT COLOR
33482-0409	GREEN	D	40	40			X		DESIGN CONCEPT	NOT RECOMMENDED, USE 33482-4406, SAME KEY IN DIFFERENT COLOR
33482-0411	BLACK	A	60	60			X	X	SALEABLE	RECOMMENDED, TEMPERATURE CLASS 4 (-40°C TO 150°C)
33482-0412	LIGHT GRAY	B	40	60			X	X	SALEABLE	RECOMMENDED, TEMPERATURE CLASS 4 (-40°C TO 150°C)
33482-0413	BROWN	C	60	40			X	X	DESIGN CONCEPT	NOT RECOMMENDED, USE 33482-4407, SAME KEY IN DIFFERENT COLOR
33482-0414	GREEN	D	40	40			X	X	DESIGN CONCEPT	NOT RECOMMENDED, USE 33482-4408, SAME KEY IN DIFFERENT COLOR
33482-0416	BLACK	A	60	60	X	X	X	X	SALEABLE	RECOMMENDED, TEMPERATURE CLASS 4 (-40°C TO 150°C)
33482-0417	LIGHT GRAY	B	40	60	X	X	X	X	SALEABLE	RECOMMENDED, TEMPERATURE CLASS 4 (-40°C TO 150°C)
33482-0418	BROWN	C	60	40	X	X	X	X	DESIGN CONCEPT	NOT RECOMMENDED, USE 33482-4409, SAME KEY IN DIFFERENT COLOR
33482-0419	GREEN	D	40	40	X	X	X	X	DESIGN CONCEPT	NOT RECOMMENDED, USE 33482-4410, SAME KEY IN DIFFERENT COLOR
33482-0421	BLACK	A	60	60	X	X	X		SALEABLE	RECOMMENDED, TEMPERATURE CLASS 4 (-40°C TO 150°C)
33482-0422	BLACK	A	60	60				X	SALEABLE	RECOMMENDED, TEMPERATURE CLASS 4 (-40°C TO 150°C)
33482-0423	BLACK	A	60	60			X	X	SALEABLE	RECOMMENDED, TEMPERATURE CLASS 4 (-40°C TO 150°C)
33482-0424	BLACK	A	60	60				X	SALEABLE	RECOMMENDED, TEMPERATURE CLASS 4 (-40°C TO 150°C)
33482-0425	BLACK	A	60	60	X	X			SALEABLE	RECOMMENDED, TEMPERATURE CLASS 4 (-40°C TO 150°C)
33482-4403	DARK GRAY	C	60	40					SALEABLE	RECOMMENDED, TEMPERATURE CLASS 4 (-40°C TO 150°C)
33482-4404	STONE GRAY	D	40	40					SALEABLE	RECOMMENDED, TEMPERATURE CLASS 4 (-40°C TO 150°C)
33482-4405	DARK GRAY	C	60	40			X		SALEABLE	RECOMMENDED, TEMPERATURE CLASS 4 (-40°C TO 150°C)
33482-4406	STONE GRAY	D	40	40			X		SALEABLE	RECOMMENDED, TEMPERATURE CLASS 4 (-40°C TO 150°C)
33482-4407	DARK GRAY	C	60	40			X	X	SALEABLE	RECOMMENDED, TEMPERATURE CLASS 4 (-40°C TO 150°C)
33482-4408	STONE GRAY	D	40	40			X	X	SALEABLE	RECOMMENDED, TEMPERATURE CLASS 4 (-40°C TO 150°C)
33482-4409	DARK GRAY	C	60	40	X	X	X	X	SALEABLE	RECOMMENDED, TEMPERATURE CLASS 4 (-40°C TO 150°C)
33482-4410	STONE GRAY	D	40	40	X	X	X	X	SALEABLE	RECOMMENDED, TEMPERATURE CLASS 4 (-40°C TO 150°C)

ENTER DESCRIPTION IEC NO. UAU2010-0100 DRAWN BY MYANSLAMBROU CHECKED BY DGRIFITHS CHYKOSVERZYL APPR:VKOSHY 2009/08/06 2009/08/06 2009/08/12	QUALITY SYMBOLS	GENERAL TOLERANCES (UNLESS SPECIFIED)	DIMENSION STYLE	SCALE	DESIGN UNITS	THIRD ANGLE PROJECTION
	▽=0 ▽=0	mm INCH 4 PLACES ± --- ± --- 3 PLACES ± --- ± --- 2 PLACES ± 0.10 ± --- 1 PLACE ± 0.3 ± --- ANGULAR ± 3 °	MM ONLY DATE 04-27-06 DATE 06-22-06 DATE 06-22-06	2:1	METRIC	MX150 BLADE CONNECTOR ASSEMBLY 2 ROW SEALED 4 WAY MOLEX INCORPORATED
	DRAFT WHERE APPLICABLE MUST REMAIN WITHIN DIMENSIONS	MATERIAL NO. SEE TABLE DATE 06-22-06	SHEET NO. 2 OF 2 DOCUMENT NO. SD-33482-041	THIS DRAWING CONTAINS INFORMATION THAT IS PROPRIETARY TO MOLEX INCORPORATED AND SHOULD NOT BE USED WITHOUT WRITTEN PERMISSION		