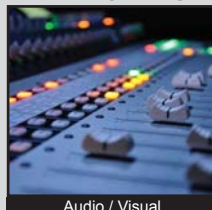


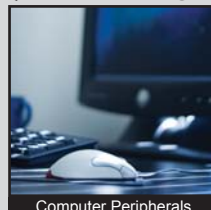
ANTI-VANDAL SWITCHES
 DETECTOR SWITCHES
 DIP SWITCHES
 KEYLOCK SWITCHES
 NAVIGATION SWITCHES
 PUSHBUTTON SWITCHES
 ROCKER SWITCHES
 ROTARY SWITCHES
 SLIDE SWITCHES
 SNAP ACTION SWITCHES
 TACTILE SWITCHES
 TOGGLE SWITCHES
 CAP OPTIONS



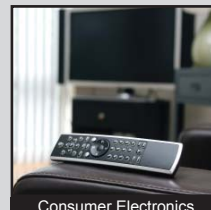
APPLICATIONS / MARKETS



Audio / Visual



Computer Peripherals



Consumer Electronics



Handheld Devices



Medical Equipment



Telecommunication

RoHS

SPECIFICATIONS

Electrical Rating: 20mA @ 15VDC
Life Expectancy: up to 100,000 Cycles
Contact Resistance: 500mΩ Max.
Insulation Resistance: 100MΩ Min. at 500VDC
Dielectric Strength: 250VAC for 1 Minute
Operating Temperature: -40°C to 85°C Min.
Operating Force: 100gf and 160gf
Travel: 0.15mm

Function: SPST, Off-(On)

FEATURES & BENEFITS

- 3.0mm (W) x 2.6mm (L) x 0.65mm (H) dimensions
- Up to 100,000 cycle life expectancy
- 100gf and 160gf options

PART NUMBER CONFIGURATOR

Series	Model	Actuator (L Dimension)	Force	Plating
TL	3700	A - 0.65	F100 - 100 grams F160 - 160 grams	Q - Silver

Specifications subject to change without notice



E-SWITCH®

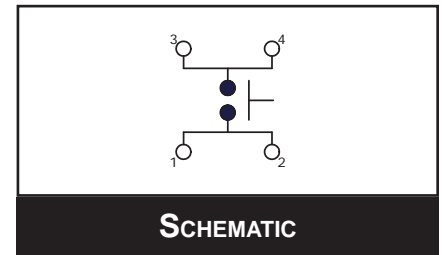
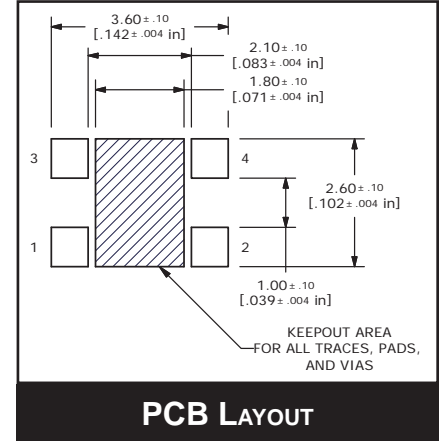
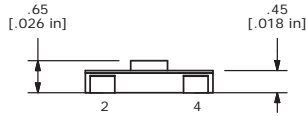
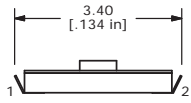
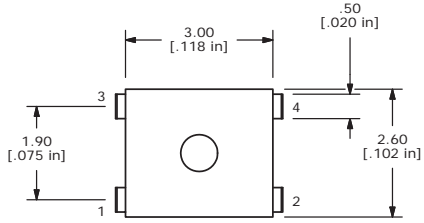


www.e-switch.com

800.867.2717

1

BODY DIMENSIONS



- ANTI-VANDAL SWITCHES
- DETECTOR SWITCHES
- DIP SWITCHES
- KEYLOCK SWITCHES
- NAVIGATION SWITCHES
- PUSHBUTTON SWITCHES
- ROCKER SWITCHES
- ROTARY SWITCHES
- SLIDE SWITCHES
- SNAP ACTION SWITCHES
- TACTILE SWITCHES
- TOGGLE SWITCHES
- CAP OPTIONS

