



Integrated Device Technology, Inc.

SELF-TIMED BiCMOS ECL STATIC RAM 256K (64K x 4-BIT) STRAM

PRELIMINARY
IDT10506LL
IDT100506LL
IDT101506LL

FEATURES:

- 65,536-words x 4-bit organization
- Self-Timed Write, with latches on inputs and latches on outputs
- Balanced Read/Write cycle time: 15/18ns
- Access time: 12/15 ns (max.)
- Fully compatible with ECL logic levels
- Through-hole DIP and surface-mount packages

DESCRIPTION:

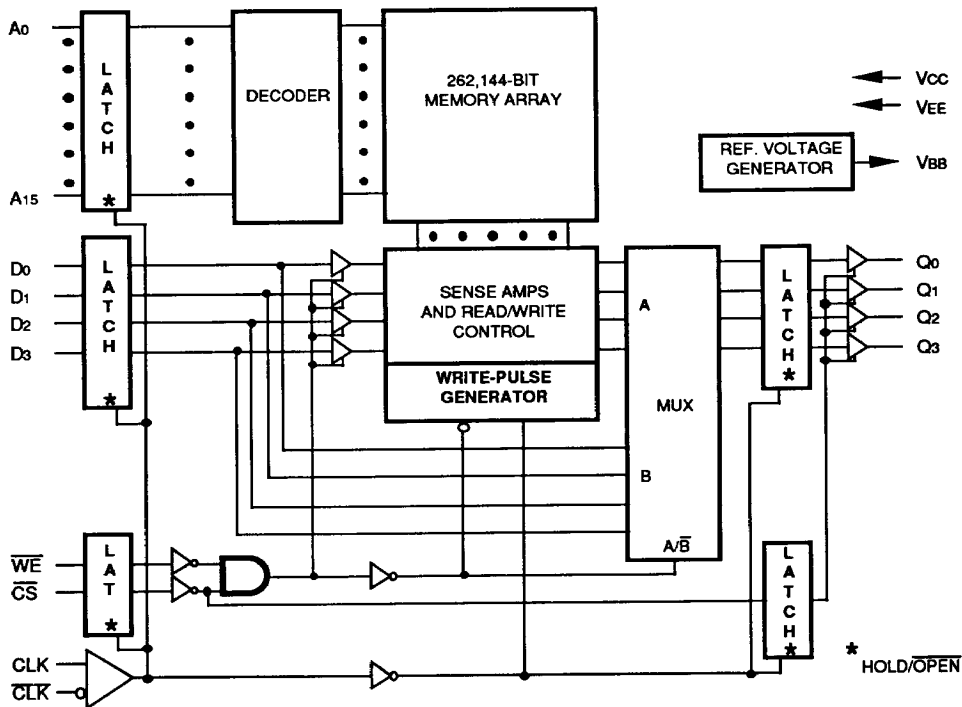
The IDT10506LL, IDT100506LL and IDT101506LL are 65,536-bit high-speed BiCMOS™ ECL static random access memories organized as 64K x 4, with inputs and outputs fully compatible with ECL levels. Clocked level-sensitive

latches on inputs and outputs, and the self-timed write operation, provide enhanced system performance over conventional RAMs, providing easier design and improved system level cycle times.

Inputs can flow into the device and then are latched by the leading edge of an externally supplied differential clock. The small input valid window required means more margin for system skews. Logic-to-memory propagation delay is included in device cycle time calculation, allowing this device to deliver better system performance than asynchronous SRAMs and glue logic.

Write timing is controlled internally based on the clock. Write Enable has no special requirements. The device allows balanced read and write cycle times, and reads and writes can be inserted in any order.

FUNCTIONAL BLOCK DIAGRAM



BiCMOS is a trademark of Integrated Device Technology, Inc.

2783 drw 01

COMMERCIAL TEMPERATURE RANGES

AUGUST 1990

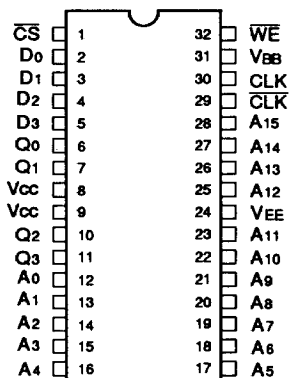
© 1990 Integrated Device Technology, Inc.

5.10 --/

DSC-8013/1

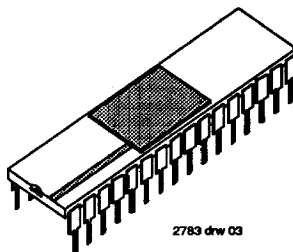
1

PIN CONFIGURATION



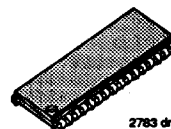
DIP/SOJ
TOP VIEW

2783 drw 02



400-Mil-Wide
CERAMIC PACKAGE
C32

2783 drw 03



300-Mil-Wide
PLASTIC SOJ PACKAGE
Y32

2783 drw 04

PIN DESCRIPTIONS

Symbol	Pin Name
A0 through A15	Address Inputs
D0 through D3	Data Inputs
Q0 through Q3	Data Outputs
WE	Write Enable Input
CS	Chip Select Input (Internal pull down)
CLK, CLK	Differential Clock Inputs
VBB	Reference Voltage Output ($\approx 1.32V$)
VEE	More Negative Supply Voltage
Vcc	Less Negative Supply Voltage

2783 tbl 01

AC OPERATING RANGES⁽¹⁾

I/O	VEE	Temperature
10K	-5.2V $\pm 5\%$	0 TO 75°C, air flow exceeding 2 m/sec
100K	-4.5V $\pm 5\%$	0 TO 85°C, air flow exceeding 2 m/sec
101K	-4.75V to -5.46V	0 TO 75°C, air flow exceeding 2 m/sec

NOTE:

1. Referenced to Vcc

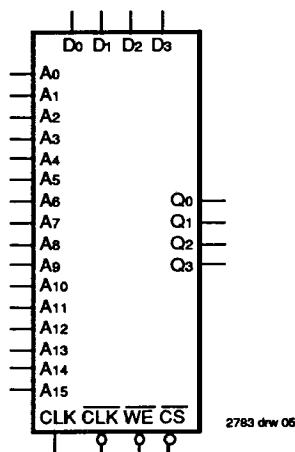
2783 tbl 02

CAPACITANCE ($T_A = +25^\circ C$, $f = 1.0MHz$)

Symbol	Parameter	DIP		SOJ		Unit
		Typ.	Max.	Typ.	Max.	
CINCLK	Input Capacitance CLK/CLK	6	—	3	—	pF
CIN	Input Capacitance except CLK/CLK	4	—	3	—	pF
COU	Output Capacitance	6	—	3	—	pF

2783 tbl 03

LOGIC SYMBOL



64Kx4
STRAM

2783 drw 05

TRUTH TABLE⁽¹⁾

CS	WE	CLK	Dataout ⁽²⁾	Function
H	X	\uparrow	L	Deselected
L	H	\uparrow	RAM Data	Read
L	L	\uparrow	WRITE Data	Write

NOTES:

1. H=High, L=Low, X=Don't Care

2. DATAOUT changes when CLK returns high.

2783 tbl 04

ECL-10K ABSOLUTE MAXIMUM RATINGS⁽¹⁾

Symbol	Rating		Value	Unit
VTERM	Terminal Voltage With Respect to GND		+0.5 to -7.0	V
TA	Operating Temperature		0 to + 75	°C
TBIAS	Temperature Under Bias		-55 to +125	°C
TSTG	Storage Temperature	Ceramic Plastic	-65 to +150 -55 to +125	°C
PT	Power Dissipation		1.0	W
IOUT	DC Output Current (Output High)		-50	mA

2783 b1 05

NOTE:

1. Stresses greater than those listed under ABSOLUTE MAXIMUM RATINGS may cause permanent damage to the device. This is a stress rating only and functional operation of the device at these or any other conditions above those indicated in the operational sections of this specification is not implied. Exposure to absolute maximum rating conditions for extended periods may affect reliability.

ECL-10K DC ELECTRICAL CHARACTERISTICS

(V_{EE} = -5.2V, R_L = 50Ω to -2.0V, T_A = 0 to +75°C for DIP, air flow exceeding 2 m/sec)

Symbol	Parameter	Test Conditions	Min. (B)	Typ. ⁽¹⁾	Max. (A)	Unit	T _A
V _{OH}	Output HIGH Voltage	V _{IN} = V _{IHA} or V _{ILB}	-1000 -960 -900	-885	-840 -810 -720	mV	0°C 25°C 75°C
V _{OL}	Output LOW Voltage	V _{IN} = V _{IHA} or V _{ILB}	-1870 -1850 -1830	—	-1665 -1650 -1625	mV	0°C 25°C 75°C
V _{OHc}	Output Threshold HIGH Voltage	V _{IN} = V _{IHB} or V _{ILA}	-1020 -980 -920	—	—	mV	0°C 25°C 75°C
V _{OLc}	Output Threshold LOW Voltage	V _{IN} = V _{IHB} or V _{ILA}	—	—	-1645 -1630 -1605	mV	0°C 25°C 75°C
V _{IH}	Input HIGH Voltage	Guaranteed Input Voltage High for All Inputs ⁽²⁾	-1145 -1105 -1045	—	-840 -810 -720	mV	0°C 25°C 75°C
V _{IL}	Input LOW Voltage	Guaranteed Input Voltage Low for All Inputs ⁽²⁾	-1870 -1850 -1830	—	-1490 -1475 -1450	mV	0°C 25°C 75°C
I _{IH}	Input HIGH Current	V _{IN} = V _{IHA}	CS	—	220	μA	—
		Others	—	—	110	μA	—
I _{IL}	Input LOW Current	V _{IN} = V _{ILB}	CS	0.5	170	μA	—
		Others	-50	—	90	μA	—
I _{EE}	Supply Current	All Inputs and Outputs Open ⁽²⁾	-280	-220	—	mA	—

2783 b1 06

NOTES:

- Typical parameters are specified at V_{EE} = -5.2V, T_A = +25°C and maximum loading.
- Except CLK and CLK, one of which is tied low and one is tied high.

ECL-100K ABSOLUTE MAXIMUM RATINGS⁽¹⁾

Symbol	Rating		Value	Unit
VTERM	Terminal Voltage With Respect to GND		+0.5 to -7.0	V
TA	Operating Temperature		0 to + 85	°C
TBIAS	Temperature Under Bias		-55 to +125	°C
TSTG	Storage Temperature	Ceramic Plastic	-65 to +150 -55 to +125	°C
PT	Power Dissipation		1.0	W
IOUT	DC Output Current (Output High)		-50	mA

NOTE:

2783 tcl 07

1. Stresses greater than those listed under ABSOLUTE MAXIMUM RATINGS may cause permanent damage to the device. This is a stress rating only and functional operation of the device at these or any other conditions above those indicated in the operational sections of this specification is not implied. Exposure to absolute maximum rating conditions for extended periods may affect reliability.

ECL-100K DC ELECTRICAL CHARACTERISTICS

(V_{EE} = -4.5V, R_L = 50Ω to -2.0V, T_A = 0 to +85°C, air flow exceeding 2 m/sec)

Symbol	Parameter	Test Conditions	Min. (B)	Typ. ⁽¹⁾	Max. (A)	Unit
V _{OH}	Output HIGH Voltage	V _{IN} = V _{IHA} or V _{ILB}	-1025	-955	-880	mV
V _{OL}	Output LOW Voltage	V _{IN} = V _{IHA} or V _{ILB}	-1810	-1715	-1620	mV
V _{OHc}	Output Threshold HIGH Voltage	V _{IN} = V _{IHB} or V _{ILA}	-1035	—	—	mV
V _{OLc}	Output Threshold LOW Voltage	V _{IN} = V _{IHB} or V _{ILA}	—	—	-1610	mV
V _{IH}	Input HIGH Voltage	Guaranteed Input Voltage High for All Inputs ⁽²⁾	-1165	—	-880	mV
V _{IL}	Input LOW Voltage	Guaranteed Input Voltage Low for All Inputs ⁽²⁾	-1810	—	-1475	mV
I _{IH}	Input HIGH Current	V _{IN} = V _{IHA}	—	—	220	μA
		Others			110	
I _{IL}	Input LOW Current	V _{IN} = V _{ILB}	-50	—	170	μA
		Others			90	
I _{EE}	Supply Current	All Inputs and Outputs Open ⁽²⁾	-260	-200	—	mA

NOTES:

2783 tcl 06

1. Typical parameters are specified at V_{EE} = -4.5V, T_A = +25°C and maximum loading.

2. Except CLK and CLK, one of which is tied low and one is tied high.

ECL-101K ABSOLUTE MAXIMUM RATINGS⁽¹⁾

Symbol	Rating	Value	Unit
V _{TERM}	Terminal Voltage With Respect to GND	+0.5 to -7.0	V
T _A	Operating Temperature	0 to +75	°C
T _{BIAS}	Temperature Under Bias	-55 to +125	°C
T _{STG}	Storage Temperature	Ceramic -65 to +150 Plastic -55 to +125	°C
P _T	Power Dissipation	1.0	W
I _{OUT}	DC Output Current (Output High)	-50	mA

2783 btl 09

NOTE:

- Stresses greater than those listed under ABSOLUTE MAXIMUM RATINGS may cause permanent damage to the device. This is a stress rating only and functional operation of the device at these or any other conditions above those indicated in the operational sections of this specification is not implied. Exposure to absolute maximum rating conditions for extended periods may affect reliability.

ECL-101K DC ELECTRICAL CHARACTERISTICS

(V_{EE} = -5.2V, R_L = 50Ω to -2.0V, T_A = 0 to +75°C for DIP, air flow exceeding 2 m/sec)

Symbol	Parameter	Test Conditions	Min. (B)	Typ. ⁽¹⁾	Max. (A)	Unit
V _{OH}	Output HIGH Voltage	V _{IN} = V _{IHA} or V _{ILB}	-1025	-955	-880	mV
V _{OL}	Output LOW Voltage	V _{IN} = V _{IHA} or V _{ILB}	-1810	-1715	-1620	mV
V _{OHC}	Output Threshold HIGH Voltage	V _{IN} = V _{IHB} or V _{ILA}	-1035	—	—	mV
V _{OLC}	Output Threshold LOW Voltage	V _{IN} = V _{IHB} or V _{ILA}	—	—	-1610	mV
V _{IH}	Input HIGH Voltage	Guaranteed Input Voltage High for All Inputs ⁽²⁾	-1165	—	-880	mV
V _{IL}	Input LOW Voltage	Guaranteed Input Voltage Low for All Inputs ⁽²⁾	-1810	—	-1475	mV
I _{IH}	Input HIGH Current	V _{IN} = V _{IHA}	—	—	220	μA
		C _S			110	
		Others	—	—	—	—
I _{IL}	Input LOW Current	V _{IN} = V _{ILB}	0.5	—	170	μA
		C _S			90	
		Others	-50	—	—	—
I _{EE}	Supply Current	All Inputs and Outputs Open ⁽²⁾	-280	-220	—	mA

2783 btl 10

NOTES:

- Typical parameters are specified at V_{EE} = -5.2V, T_A = +25°C and maximum loading.
- Except CLK and CLK, one of which is tied low and one is tied high.

AC TEST INPUT PULSE



2783 b1 11

The Latch-Latch architecture is most useful when read access data is needed within the same cycle that addresses settle. The input latch, when transparent, allows the access to begin as soon as addresses settle, allowing data to be ready somewhat sooner in the cycle than would be possible with a clocked-register implementation.

2783 drw 08

READ TIMING

In a typical read cycle, the read address flows into the device while clock is low, as at ❶ below. Read access begins when the last address has settled. When clock returns high, the inputs are held so that addresses can begin to change for the next cycle.

Clock high also opens the output latches, so the read data for the read address clocked in at ❶ is gated through the output latch to the output pins. There is a short delay from rising clock to output ready, called tDR (see Read Cycle Timing). If the clock-low time (twL) is shorter than the inherent access-time of the cell, output is guaranteed valid after the specified tAA. But if twL is longer than the cell access-time, output data will be valid tDR after clock goes high. Thus, the time it takes from address valid to data ready for any given address is

$$tAA = tAA \text{ OR } (tSA + tDR),$$

whichever is larger. A permutation of this equation holds for each read and write access modes.

Because addresses and control lines (Write Enable and Chip Select) all must be stable for access to commence, there are two other read access modes, described as follows.

If addresses and controls are all stable before input latches are opened by clock going low, as at ❷ below, access begins on the low-going edge of clock. Data is available tACLK later, provided the output latch is opened by clock returning high.

If address and Write Enable are valid after clock-low, but Chip Select is last to go low, as at ❸ below, data is available tACS after the low-going edge of Chip Select.

The output latch takes some time to change state for the next cycle, but this time is very short. Therefore, data hold time from clock high (tDH) is specified as zero minimum hold time.

DESELECT TIMING

Because the outputs are latched, they will continue to drive the output pins until a disable state is clocked through the device. The deselected state is achieved by de-asserting chip select (CS high) before clock returns high. This case occurs at ❹ below. Outputs then attain the disable state (low) tDR later. Status of other inputs do not effect the disabling of the device when chip select is de-asserted with the proper relation to clock.

WRITE TIMING

Write cycles are identical to read cycles, except that write enable and write data need also be supplied, with the appropriate setup and hold timing. The device has on-chip timing that handles all aspects of writing data into the addressed RAM cell without the need for external write-pulse generation. The timing logic uses the clock-high time as the write pulse, and thus determines the minimum clock-high time, twH.

In addition to writing to the RAM cell, the write data is fed to the output register by a multiplexer, so that write data is available on the output pins after an access time. Thus the input data supplied at ❺ is available on the output tADI after the input data has settled, while the input data supplied at ❻ is available tAW after Write Enable is asserted low. This function is sometimes called "Transparent Write," and is useful for write-through cache applications.

There are no restrictions on the order of read cycles and write cycles.

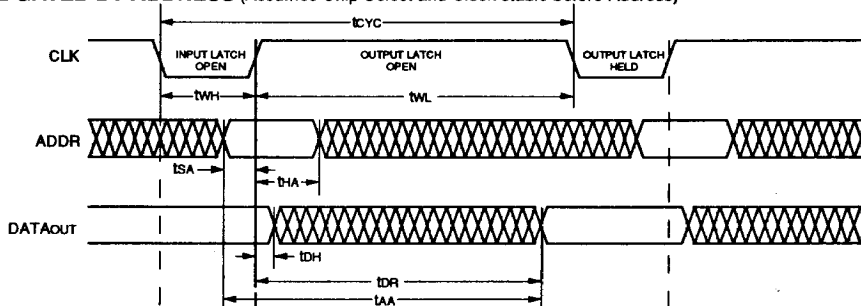
AC ELECTRICAL CHARACTERISTICS (Over the AC Operating Range)

Symbol	Parameter ⁽¹⁾	Test Condition	10506LL15 100506LL15 101506LL15		10506LL18 100506LL18 101506LL18		Unit
			Min.	Max.	Min.	Max.	
Read Cycle							
tCYC	Cycle Time	—	15	—	18	—	ns
tAA ⁽²⁾	Address Access Time	—	—	12	—	15	ns
tACS ⁽³⁾	Chip Select Access Time	—	—	5	—	5	ns
tACLK ⁽⁴⁾	Access Time from Clock Low	—	—	12	—	15	ns
tWL	Clock Low Pulse Width	—	3	—	3	—	ns
tWH	Clock High Pulse Width	—	12	—	15	—	ns
tSCS	Setup Time for Chip Select	—	1	—	1	—	ns
tSA	Setup Time for Address	—	1	—	1	—	ns
tHCS	Hold Time for Chip Select	—	2	—	2	—	ns
tHA	Hold Time for Address	—	2	—	2	—	ns
tDH	Data Hold from Clock Low	—	0	—	0	—	ns
tDR ⁽⁵⁾	Data Ready from Clock Low	—	0	4	0	4	ns

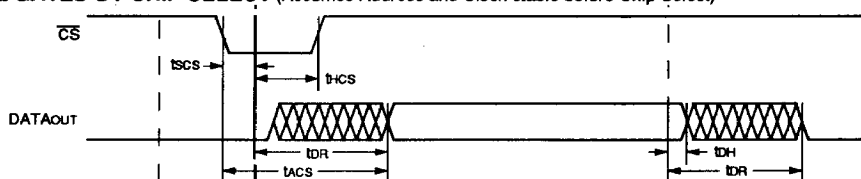
NOTES:

- Input and Output reference level is 50% point of waveform.
- Read Cycle is gated by Address when $t_{SA} < t_{WL}$ so that the access begins at the settling of Address. Access time is the larger of t_{AA} or $t_{SA} + t_{DR}$.
- Read Cycle is gated by Chip Select when $t_{SCS} < t_{WL}$ so that access begins at the falling edge of Chip Select. Access time is the larger of t_{ACS} or $t_{SCS} + t_{DR}$.
- Read Cycle is gated by Clock when $t_{SA} > t_{WL}$ so that access begins at the falling edge of Clock. Access time is the larger of t_{ACLK} or $t_{WL} + t_{DR}$.
- $t_{DR}(\max)$ is specified when all other gating conditions have been satisfied, specifically, for READ cycle: when $t_{SA} > t_{AA}(\max) - t_{DR}(\max)$ and $t_{SCS} > t_{ACS}(\max) - t_{DR}(\max)$ and $t_{WL} > t_{ACLK}(\max) - t_{DR}(\max)$; for WRITE cycle: when $t_{SD} > t_{AD}(\max) - t_{DR}(\max)$ and $t_{SWE} > t_{AW}(\max) - t_{DR}(\max)$.

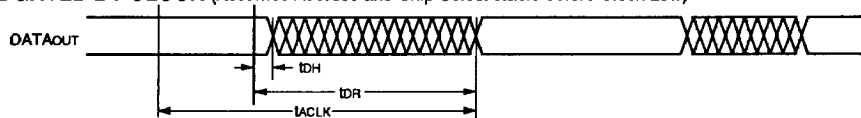
READ CYCLE GATED BY ADDRESS (Assumes Chip Select and Clock stable before Address)



READ CYCLE GATED BY CHIP SELECT (Assumes Address and Clock stable before Chip Select)



READ CYCLE GATED BY CLOCK (Assumes Address and Chip Select stable before Clock Low)



2783 drw 09

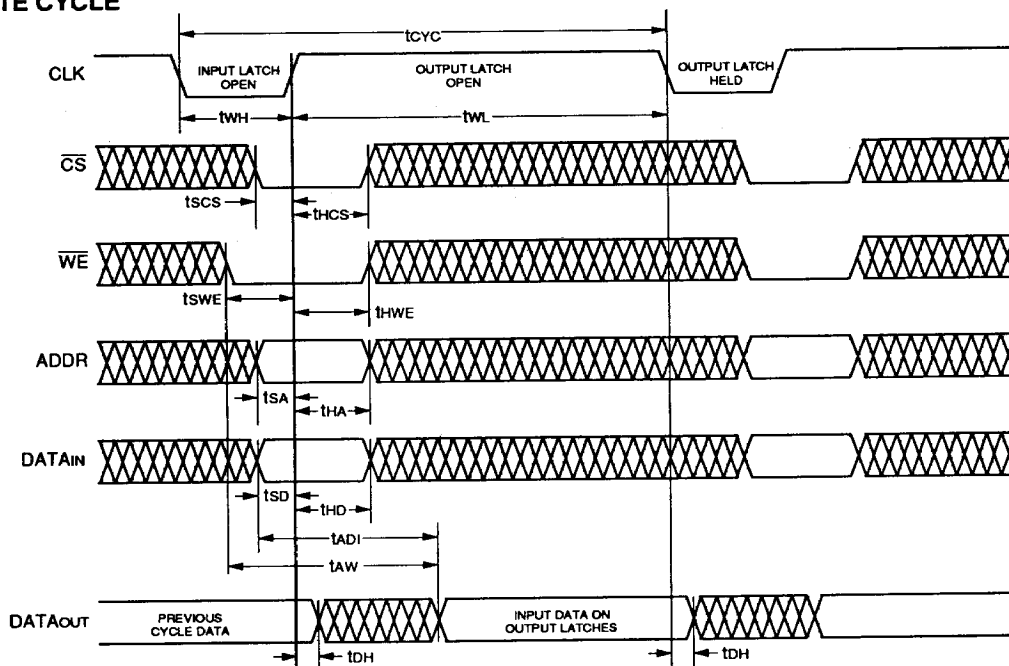
AC ELECTRICAL CHARACTERISTICS (Over the AC Operating Range)

AC ELECTRICAL CHARACTERISTICS (Over the AC Operating Range)							
Symbol	Parameter ⁽¹⁾	Test Condition	10506LL15 100506LL15 101506LL15		10506LL18 100506LL18 101506LL18		Unit
			Min.	Max.	Min.	Max.	
Write Cycle ⁽²⁾							
tAW ⁽³⁾	Write Enable Low to Data Valid	—	—	5	—	5	ns
tAD ⁽⁴⁾	Data In Valid to Data Out Valid	—	—	5	—	5	ns
tSWE	Setup Time for Write Enable	—	1	—	1	—	ns
tSD	Setup Time for Data In	—	1	—	1	—	ns
tHWE	Hold Time for Write Enable	—	2	—	2	—	ns
tHD	Hold Time for Data In	—	2	—	2	—	ns

NOTES:

1. Input and Output reference level is 50% point of waveform.
2. All Setup, Hold, and Access timing are the same as the Read Cycle with the addition of above requirements. Write Data appears on output pins after rising edge of clock.
3. Access time is the larger of t_{AW} or t_{SWE} + t_{DR}.
4. Access time is the larger of t_{AD} or t_{SD} + t_{DR}.

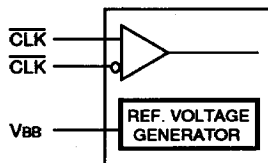
WRITE CYCLE



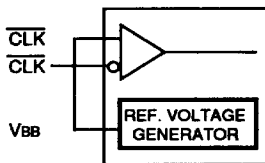
2783 drw 10

CLOCK INPUT

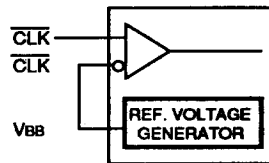
The clock input circuit has been designed to accommodate both single-ended and differential mode operation. Differential mode exhibits better common-mode noise rejection and is obtained by driving both true and complement clock lines with a differential driver, as shown in Figure (a). Single-ended operation is achieved as either falling-edge-active or rising-edge-active, as shown in Figures (b) and (c), respectively. VBB is designed to drive clock input only and is not intended to be used for any other purpose.



(a) Differential Mode



(b) Falling-Edge-Active
Single-Ended Mode



(c) Rising-Edge-Active
Single-Ended Mode

2785 drw 11

ORDERING INFORMATION

IDT	XXX	X	XX	X	X		
	Device Type	Architecture	Speed	Package	Process/ Temp. Range		
					Blank	Commercial	
					C	Sidebrazed DIP	
					Y	Small-outline J-bend	
					15	Speed in Nanoseconds	
					18		
					LL	Latched Inputs, Latched Outputs	
					10506	256K (64K x 4-bits) BiCMOS ECL-10K Self-Timed Static RAM	
					100506	256K (64K x 4-bits) BiCMOS ECL-100K Self-Timed Static RAM	
					101506	256K (64K x 4-bits) BiCMOS ECL-101K Self-Timed Static RAM	

2785 drw 12