

**LC4104C-T2A****LCD Dot Matrix Segment Driver for STN Displays****Preliminary****Overview**

The LC4104C-T2A is a segment driver IC for large-scale dot matrix LCD displays. The LC4104C-T2A latches 160-bits of display data transferred from the controller over a 4- or 8-bit parallel interface and generates the LCD drive signals. In conjunction with the LC4102C-T2A common driver, the LC4104C-T2A forms a chip set that can drive large-screen LCD panels.

Features

- High-voltage CMOS (P-sub) process
- LCD drive voltage: 36 V
- Logic system power-supply voltage: 2.7 to 5.5 V
- Maximum fcp: 12 MHz ($V_{DD} = 5\text{ V} \pm 10\%$),
10 MHz ($V_{DD} = 2.7\text{ to }4.5\text{ V}$)
- Parallel input circuit can be switched between 4 and 8 bits.
- Output directionality switching
- DISPOFF function (Holds the LCD drive voltage at a fixed level.)
- Display duty ratios: 1/160 to 1/480
- Package: TCP (Tape Carrier Package)

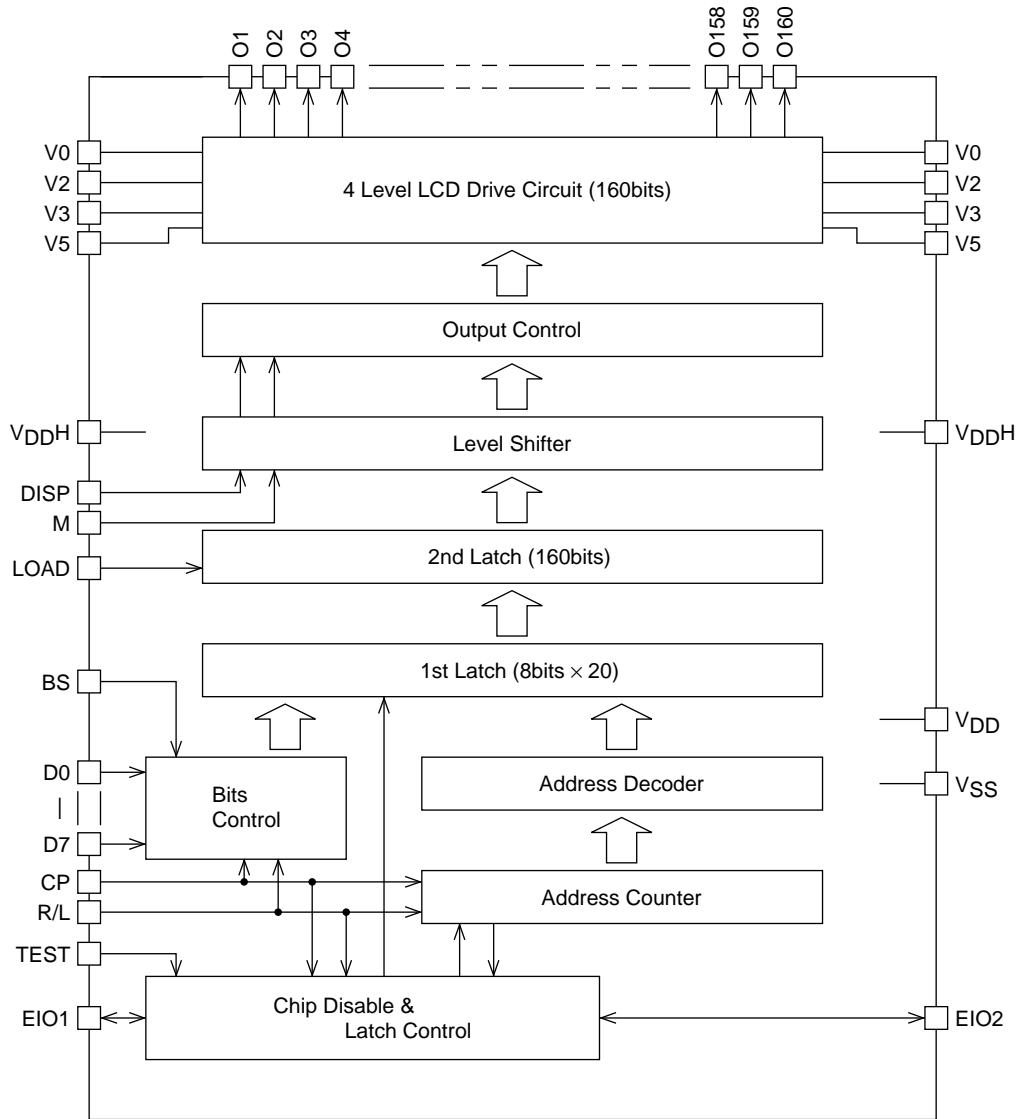
■ Any and all SANYO products described or contained herein do not have specifications that can handle applications that require extremely high levels of reliability, such as life-support systems, aircraft's control systems, or other applications whose failure can be reasonably expected to result in serious physical and/or material damage. Consult with your SANYO representative nearest you before using any SANYO products described or contained herein in such applications.

■ SANYO assumes no responsibility for equipment failures that result from using products at values that exceed, even momentarily, rated values (such as maximum ratings, operating condition ranges, or other parameters) listed in products specifications of any and all SANYO products described or contained herein.

SANYO Electric Co.,Ltd. Semiconductor Company

TOKYO OFFICE Tokyo Bldg., 1-10, 1 Chome, Ueno, Taito-ku, TOKYO, 110-8534 JAPAN

Block Diagram



A1367

Specifications

The following electrical characteristics apply when sealed in a SANYO standard PGA-208 package.

Absolute Maximum Ratings at $V_{SS} = 0\text{ V}$

Parameter	Symbol	Conditions	Ratings	Unit
Maximum supply voltage	$V_{DD}\text{ max}$		-0.3 to +7	V
Maximum supply voltage	$V_{DDH}\text{ max}$		-0.3 to +40	V
Maximum supply voltage	$V_{SS}\text{ max}$		-0.3 to +0.3	V
Input voltage	V_{IN}	D0 to D7, LOAD, CP, R/L, TEST, DISP, M, EIO1, EIO2, BS	-0.3 to $V_{DD} + 0.3$	V
Input voltage	V0, V2	V0, V2	$V_{DDH} - 7$ to $V_{DDH} + 0.3$	V
Input voltage	V3	V3	-0.3 to $V_{SS} + 7$	V
Input voltage	V5	V5	-0.3 to +0.3	V
Operating temperature	T_{opr}		-20 to +75	°C
Storage temperature	T_{stg}		-55 to +125	°C

Note: V0, V2, V3, and V5 must obey the following relationships: $V_{DDH} \geq V0 \geq V2 \geq V_{DDH} - 7\text{ V}$, and $7\text{ V} \geq V3 \geq V5 \geq V_{SS}$.

LC4104C-T2A

Allowable Operating Ranges at Ta = -20 to +75°C, V_{SS} = 0 V

Parameter	Symbol	Conditions	Ratings			Unit
			min	typ	max	
Supply voltage	V _{DD}		2.7		5.5	V
Supply voltage	V _{DDH}		14		36	V
Supply voltage	V _{SS}			0		V
Input high-level voltage	V _{IH}	D0 to D7, LOAD, CP, R/L, M, TEST, DISP, BS, EIO1, EIO2	0.8 V _{DD}		V _{DD}	V
Input low-level voltage	V _{IL}	D0 to D7, LOAD, CP, R/L, M, TEST, DISP, BS, EIO1, EIO2	0		0.2 V _{DD}	V
Input voltage	V0, V2	V0, V2	V _{DDH} - 7		V _{DDH}	V
Input voltage	V3	V3	0		V _{SSH} + 7	V
Input voltage	V5	V5		0		V

Note: V0, V2, V3, and V5 must obey the following relationships: V_{DDH} ≥ V0 ≥ V2 ≥ V_{DDH} - 7 V, and 7 V ≥ V3 ≥ V5 ≥ V_{SS}.

At power on: First turn on the logic system power supply and then turn on the high-voltage system power supply; alternatively, turn both on at the same time.

At power off: First turn off the high-voltage system power supply and then turn off the logic system power supply; alternatively, turn both off at the same time.

Allowable Operating Ranges at Ta = -20 to +75°C, V_{SS} = 0 V, V_{DD} = 5 V ± 10%

Parameter	Symbol	Conditions	Ratings			Unit
			min	typ	max	
CP clock frequency	f _{cp}	CP			12	MHz
High-level load pulse width	tw (ldH)	LOAD	50			ns
High-level clock pulse width	tw (cpH)	CP	20			ns
Low-level clock pulse width	tw (cpL)	CP	20			ns
LOAD/CP setup time	tsu (ld)	LOAD, CP	100			ns
LOAD/CP hold time	tho (ld)	LOAD, CP	200			ns
DATA/CP setup time	tsu (cp)	CP, D0 to D7	10			ns
DATA/CP hold time	tho (cp)	CP, D0 to D7	10			ns
EIO input setup time	tsu (ei)	CP, EIO1, EIO2	24			ns
Clock rise time	tr	LOAD, CP*			50	ns
Clock fall time	tf	LOAD, CP*			50	ns

Note: * The clock rise time (tr) and fall time (tf) must obey inequalities ① and ② below.

$$\textcircled{1}: tr, tf < \frac{\frac{1}{f_{cp}} - tw(cph) - tw(cpl)}{2}$$

$$\textcircled{2}: tr, tf \leq 50 \text{ ns}$$

Allowable Operating Ranges at Ta = -20 to +75°C, V_{SS} = 0 V, V_{DD} = 2.7 to 4.5 V

Parameter	Symbol	Conditions	Ratings			Unit
			min	typ	max	
CP clock frequency	f _{cp}	CP			10	MHz
High-level load pulse width	tw (ldH)	LOAD	50			ns
High-level clock pulse width	tw (cpH)	CP	37			ns
Low-level clock pulse width	tw (cpL)	CP	37			ns
LOAD/CP setup time	tsu (ld)	LOAD, CP	100			ns
LOAD/CP hold time	tho (ld)	LOAD, CP	200			ns
DATA/CP setup time	tsu (cp)	CP, D0 to D7	35			ns
DATA/CP hold time	tho (cp)	CP, D0 to D7	35			ns
EIO input setup time	tsu (ei)	CP, EIO1, EIO2	30			ns
Clock rise time	tr	LOAD, CP*			50	ns
Clock fall time	tf	LOAD, CP*			50	ns

Note: * The clock rise time (tr) and fall time (tf) must obey inequalities ① and ② below.

$$\textcircled{1}: tr, tf < \frac{\frac{1}{f_{cp}} - tw(cph) - tw(cpl)}{2}$$

$$\textcircled{2}: tr, tf \leq 50 \text{ ns}$$

LC4104C-T2A

Electrical Characteristics at $T_a = -20$ to $+75^\circ\text{C}$, $V_{DD} = 2.7$ to 5.5 V, $V_{SS} = 0$ V

Parameter	Symbol	Conditions	Ratings			Unit
			min	typ	max	
Input high-level current	I_{IH}	$V_{IN} = V_{DD}$: D0 to D7, LOAD, CP, R/L, M, DISP, EIO1, EIO2, BS, TEST			5	μA
Input low-level current	I_{IL1}	$V_{IN} = V_{SS}$: D0 to D7, LOAD, CP, R/L, M, DISP, EIO1, EIO2, BS	-5			μA
	I_{IL2}	$V_{IN} = V_{SS}$: TEST	-500			
Output high-level voltage	V_{OH}	$I_O = -0.4$ mA: EIO1, EIO2	$V_{DD} - 0.4$		V_{DD}	V
Output low-level voltage	V_{OL}	$I_O = 0.4$ mA: EIO1, EIO2	V_{SS}		0.4	V
Output on resistance	R_{OUT}	$V_{DDH} = 36$ V ¹ , $V_0 - V_O = 0.5$ V, $V_2 - V_O = 0.5$ V, $V_O - V_3 = 0.5$ V, $V_O - V_5 = 0.5$ V: O1 to O160		1	3	k Ω
Current drain	I_{DD}	$V_{DD} = 2.7$ to 5.5 V			5.0	mA
	I_{DDH}	$V_{DD} = 2.7$ to 5.5 V, $V_{DDH} = 32$ V ² ,			2.0	mA
		$V_{DD} = 5$ V $\pm 10\%$, $V_{DDH} = 36$ V			2.0	mA
	I_{ST}	*3			500	μA

Note: 1. V_O is the voltage applied for an on output, $V_0 = V_{DDH}$, $V_2 = 18/20 (V_{DDH} - V_{SS})$, $V_3 = 2/20 (V_{DDH} - V_{SS})$, $V_5 = V_{SS}$
 2. LOAD = 28 kHz, CP = 10 MHz, M = 75 Hz
 Alternatively: No output load and with the inputs $V_{IH} = V_{DD}$ and $V_{IL} = V_{SS}$.
 3. The current drain in standby mode. Note that the EIO pins must be held at V_{DD} .

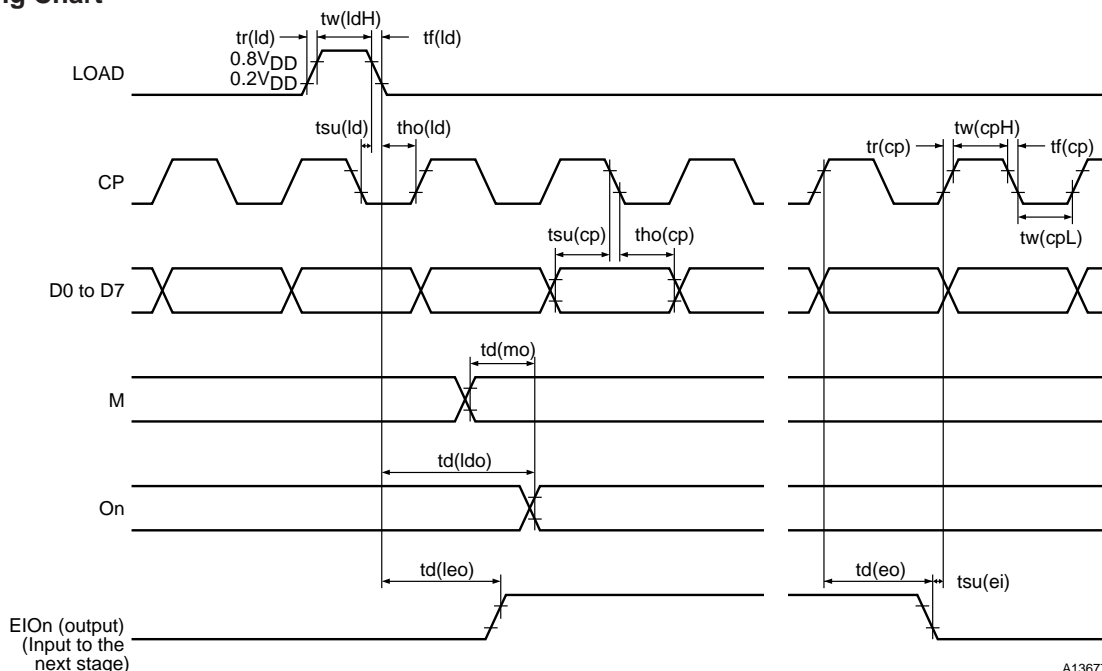
Switching Characteristics at $T_a = -20$ to $+75^\circ\text{C}$, $V_{SS} = 0$ V, $V_{DD} = 5$ V $\pm 10\%$

Parameter	Symbol	Conditions	Ratings			Unit
			min	typ	max	
EIO output delay time	$t_d(\text{eo})$	30 pF capacitive load: CP, EIO1, EIO2			40	ns
LD/EIO output delay time	$t_d(\text{leo})$	30 pF capacitive load: LOAD, EIO1, EIO2			70	ns
LOAD/on delay time	$t_d(\text{ldo})$	100 pF capacitive load: LOAD, O1 to O160			3	μs
M/on delay time	$t_d(\text{mo})$	100 pF capacitive load: M, O1 to O160			3	μs

Switching Characteristics at $T_a = -20$ to $+75^\circ\text{C}$, $V_{SS} = 0$ V, $V_{DD} = 2.7$ to 4.5 V

Parameter	Symbol	Conditions	Ratings			Unit
			min	typ	max	
EIO output delay time	$t_d(\text{eo})$	30 pF capacitive load: CP, EIO1, EIO2			80	ns
LD/EIO output delay time	$t_d(\text{leo})$	30 pF capacitive load: LOAD, EIO1, EIO2			130	ns
LOAD/on delay time	$t_d(\text{ldo})$	100 pF capacitive load: LOAD, O1 to O160			3	μs
M/on delay time	$t_d(\text{mo})$	100 pF capacitive load: M, O1 to O160			3	μs

Timing Chart



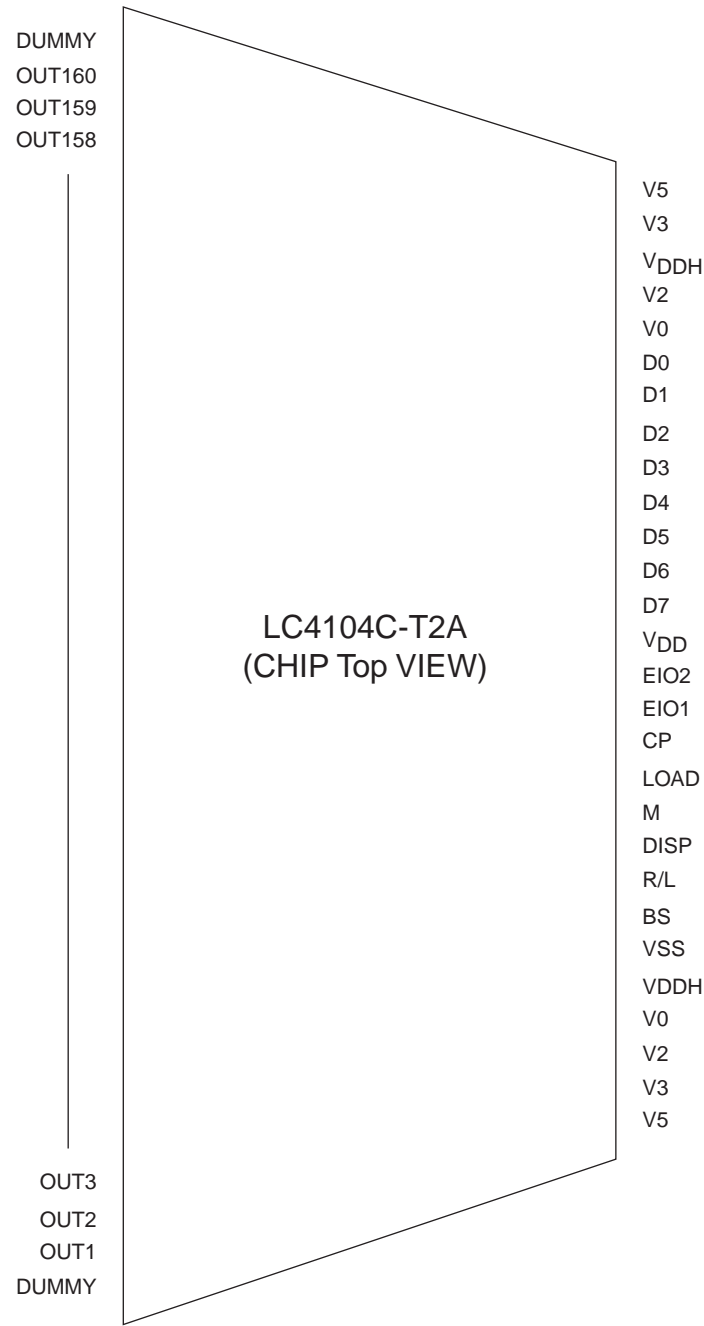
A13677

LC4104C-T2A

Pin Functions

Symbol	I/O	Function																																																				
O1 to O160	O	LCD drive outputs																																																				
		<table><tr><td>M</td><td>Data</td><td>DISP</td><td>On</td></tr><tr><td>H</td><td>H</td><td>H</td><td>V0</td></tr><tr><td>H</td><td>L</td><td>H</td><td>V2</td></tr><tr><td>L</td><td>L</td><td>H</td><td>V3</td></tr><tr><td>L</td><td>H</td><td>H</td><td>V5</td></tr><tr><td>*</td><td>*</td><td>L</td><td>V5</td></tr></table>	M	Data	DISP	On	H	H	H	V0	H	L	H	V2	L	L	H	V3	L	H	H	V5	*	*	L	V5																												
		M	Data	DISP	On																																																	
		H	H	H	V0																																																	
		H	L	H	V2																																																	
		L	L	H	V3																																																	
		L	H	H	V5																																																	
*	*	L	V5																																																			
*: Don't care.																																																						
V0	I	V0 level drive voltage supply (selected level)																																																				
V2	I	V2 level drive voltage supply (unselected level)																																																				
V3	I	V3 level drive voltage supply (unselected level)																																																				
V5	I	V5 level drive voltage supply (selected level)																																																				
V _{DDH}	—	High-voltage system power supply.																																																				
V _{DD}	—	Logic system power supply.																																																				
V _{SS}	—	GND																																																				
DISP	I	LCD off function. All outputs go to the V5 level when this pin is low.																																																				
M	I	Alternation signal input																																																				
EIO1 EIO2	I/O I/O	Enable I/O																																																				
<table><tr><td>R/L</td><td>EIO1</td><td>EIO2</td></tr><tr><td>L</td><td>In</td><td>Out</td></tr><tr><td>H</td><td>Out</td><td>In</td></tr></table>			R/L	EIO1	EIO2	L	In	Out	H	Out	In																																											
R/L	EIO1	EIO2																																																				
L	In	Out																																																				
H	Out	In																																																				
Enable input: The enable input at the first stage is fixed at V _{SS} . For succeeding stages, the enable input is connected to the enable output from the preceding stage.																																																						
Enable output: Connected to the enable input of the next stage when cascode connection is used.																																																						
CP	I	Data acquisition clock (falling edge)																																																				
LOAD	I	Data load clock (falling edge)																																																				
TEST	I	Test input. Must be tied high in normal use.*																																																				
R/L	I	Data shift direction setting																																																				
		<table><tr><td>R/L</td><td>BS</td><td colspan="10">O1 to O160 outputs</td></tr><tr><td rowspan="2">L</td><td rowspan="2">H</td><td>O1 ↑ D7</td><td>O2 ↑ D6</td><td>O3 ↑ D5</td><td>O4 ↑ D4</td><td>→ ...</td><td>O157 ↑ D3</td><td>O158 ↑ D2</td><td>O159 ↑ D1</td><td>O160 ↑ D0</td></tr><tr><td>O1 ↑ D0</td><td>O2 ↑ D1</td><td>O3 ↑ D2</td><td>O4 ↑ D3</td><td>...←</td><td>O157 ↑ D4</td><td>O158 ↑ D5</td><td>O159 ↑ D6</td><td>O160 ↑ D7</td></tr><tr><td rowspan="2">L</td><td rowspan="2">L</td><td>O1 ↑ D3</td><td>O2 ↑ D2</td><td>O3 ↑ D1</td><td>O4 ↑ D0</td><td>→ ...</td><td>O157 ↑ D3</td><td>O158 ↑ D2</td><td>O159 ↑ D1</td><td>O160 ↑ D0</td></tr><tr><td>O1 ↑ D0</td><td>O2 ↑ D1</td><td>O3 ↑ D2</td><td>O4 ↑ D3</td><td>...←</td><td>O157 ↑ D0</td><td>O158 ↑ D1</td><td>O159 ↑ D2</td><td>O160 ↑ D3</td></tr></table>	R/L	BS	O1 to O160 outputs										L	H	O1 ↑ D7	O2 ↑ D6	O3 ↑ D5	O4 ↑ D4	→ ...	O157 ↑ D3	O158 ↑ D2	O159 ↑ D1	O160 ↑ D0	O1 ↑ D0	O2 ↑ D1	O3 ↑ D2	O4 ↑ D3	...←	O157 ↑ D4	O158 ↑ D5	O159 ↑ D6	O160 ↑ D7	L	L	O1 ↑ D3	O2 ↑ D2	O3 ↑ D1	O4 ↑ D0	→ ...	O157 ↑ D3	O158 ↑ D2	O159 ↑ D1	O160 ↑ D0	O1 ↑ D0	O2 ↑ D1	O3 ↑ D2	O4 ↑ D3	...←	O157 ↑ D0	O158 ↑ D1	O159 ↑ D2	O160 ↑ D3
		R/L	BS	O1 to O160 outputs																																																		
		L	H	O1 ↑ D7	O2 ↑ D6	O3 ↑ D5	O4 ↑ D4	→ ...	O157 ↑ D3	O158 ↑ D2	O159 ↑ D1	O160 ↑ D0																																										
				O1 ↑ D0	O2 ↑ D1	O3 ↑ D2	O4 ↑ D3	...←	O157 ↑ D4	O158 ↑ D5	O159 ↑ D6	O160 ↑ D7																																										
		L	L	O1 ↑ D3	O2 ↑ D2	O3 ↑ D1	O4 ↑ D0	→ ...	O157 ↑ D3	O158 ↑ D2	O159 ↑ D1	O160 ↑ D0																																										
O1 ↑ D0	O2 ↑ D1			O3 ↑ D2	O4 ↑ D3	...←	O157 ↑ D0	O158 ↑ D1	O159 ↑ D2	O160 ↑ D3																																												
D0 to D7	I	Parallel data inputs																																																				
BS	I	Input bus setting. Set high for 8-bit input, low for 4-bit input. For 4-bit input, D0 to D3 are used for data input and D4 to D7 must be tied to ground.																																																				

Pin Assignment



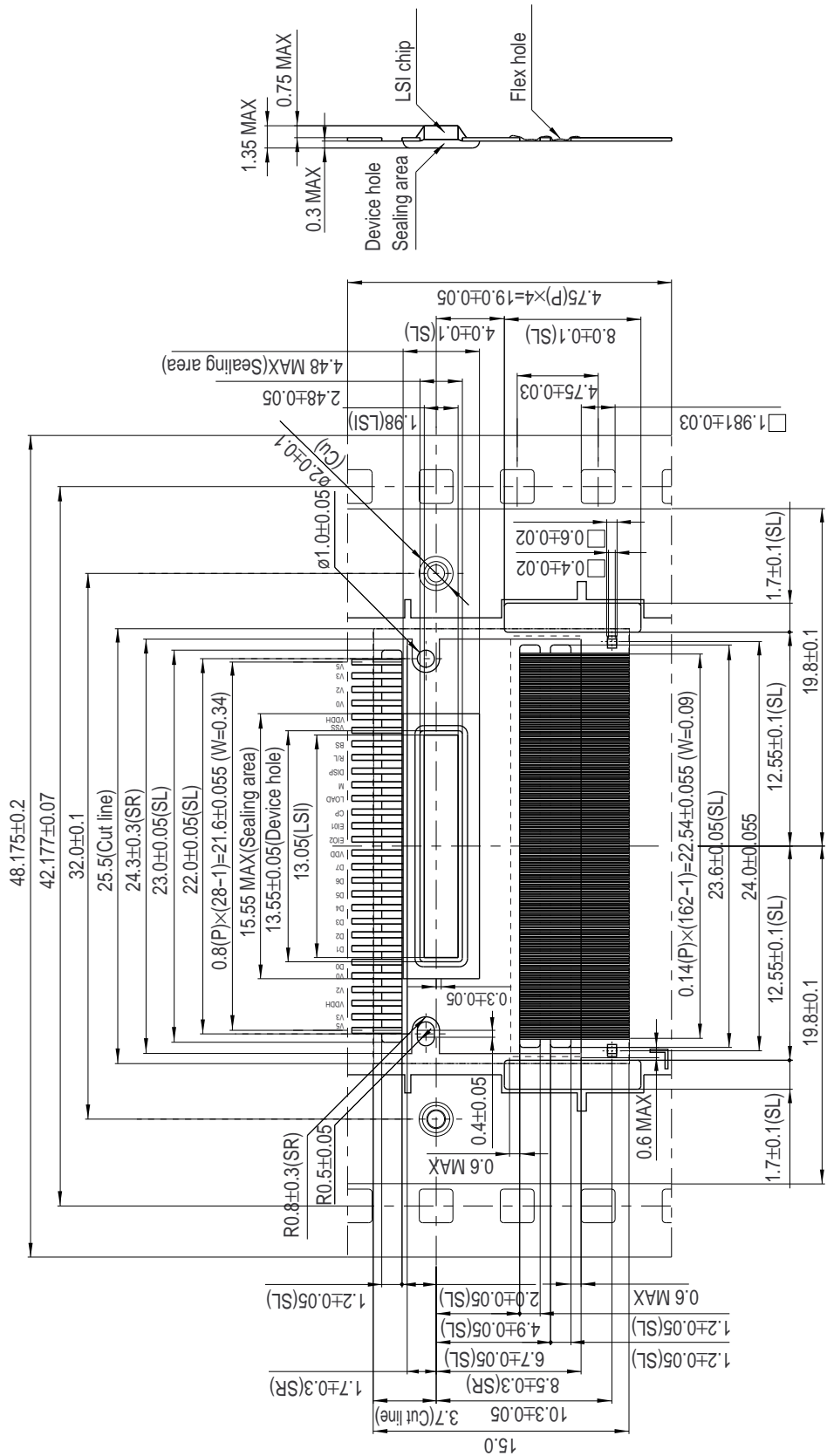
A13678

Note: This figure shows the chip pattern surface as seen from above.
This figure dose not stipulate the TCP package.

Package Dimensions

unit: mm

LC4104C-T2A



- Specifications of any and all SANYO products described or contained herein stipulate the performance, characteristics, and functions of the described products in the independent state, and are not guarantees of the performance, characteristics, and functions of the described products as mounted in the customer's products or equipment. To verify symptoms and states that cannot be evaluated in an independent device, the customer should always evaluate and test devices mounted in the customer's products or equipment.
- SANYO Electric Co., Ltd. strives to supply high-quality high-reliability products. However, any and all semiconductor products fail with some probability. It is possible that these probabilistic failures could give rise to accidents or events that could endanger human lives, that could give rise to smoke or fire, or that could cause damage to other property. When designing equipment, adopt safety measures so that these kinds of accidents or events cannot occur. Such measures include but are not limited to protective circuits and error prevention circuits for safe design, redundant design, and structural design.
- In the event that any or all SANYO products (including technical data, services) described or contained herein are controlled under any of applicable local export control laws and regulations, such products must not be exported without obtaining the export license from the authorities concerned in accordance with the above law.
- No part of this publication may be reproduced or transmitted in any form or by any means, electronic or mechanical, including photocopying and recording, or any information storage or retrieval system, or otherwise, without the prior written permission of SANYO Electric Co., Ltd.
- Any and all information described or contained herein are subject to change without notice due to product/technology improvement, etc. When designing equipment, refer to the "Delivery Specification" for the SANYO product that you intend to use.
- Information (including circuit diagrams and circuit parameters) herein is for example only; it is not guaranteed for volume production. SANYO believes information herein is accurate and reliable, but no guarantees are made or implied regarding its use or any infringements of intellectual property rights or other rights of third parties.

This catalog provides information as of February, 2002. Specifications and information herein are subject to change without notice.