

**PLEASE CHECK WWW.MOLEX.COM FOR LATEST PART INFORMATION**

**Part Number:** [0357253700](#)  
**Status:** **Active**  
**Description:** 6.35mm (.250") Tab Slip-On Wire-to-Wire Terminal, Female, 14-18 AWG, Unplated

**Documents:**

<a href="#">Drawing (PDF)</a>	<a href="#">Product Specification PS-35725-005 (PDF)</a>
<a href="#">Product Specification PS-35166-001 (PDF)</a>	<a href="#">Product Specification PS-35955-001 (PDF)</a>
<a href="#">Product Specification PS-35725-002 (PDF)</a>	<a href="#">RoHS Certificate of Compliance (PDF)</a>

**General**

Product Family	Crimp Terminals
Series	<a href="#">35725</a>
Crimp Quality Equipment	Yes
Product Name	N/A

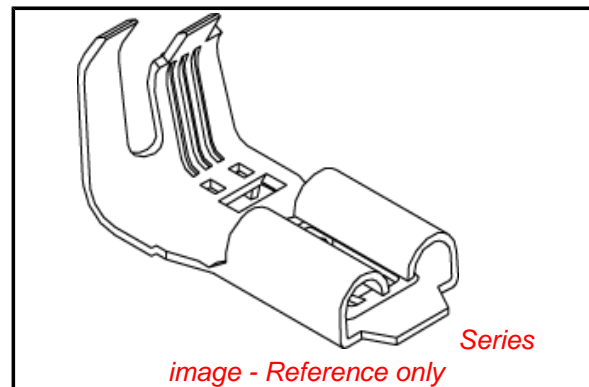
**Physical**

Gender	Female
Material - Metal	Brass
Material - Plating Mating	Unplated
Packaging Type	Reel
Wire Insulation Diameter	5.00mm (.197") max.
Wire Size AWG	14, 16, 18
Wire Size mm <sup>2</sup>	N/A

**Material Info**

**Reference - Drawing Numbers**

Product Specification	PS-35166-001, PS-35725-002, PS-35725-005, PS-35955-001
Sales Drawing	SD-35725-3**0



**EU RoHS**

**ELV and RoHS  
Compliant**  
**REACH SVHC  
Contains SVHC: No**  
**Halogen-Free  
Status**

**China RoHS**



**Need more information on product  
environmental compliance?**

Email [productcompliance@molex.com](mailto:productcompliance@molex.com)  
 For a multiple part number RoHS Certificate of  
 Compliance, [click here](#)

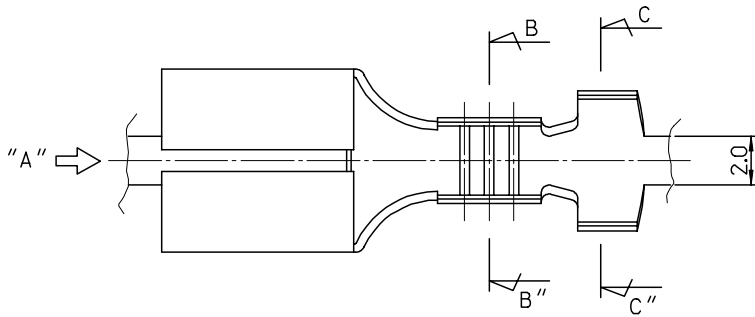
Please visit the [Contact Us](#) section for any  
 non-product compliance questions.

**Search Parts in this Series**

[35725Series](#)

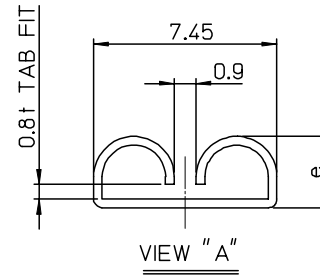
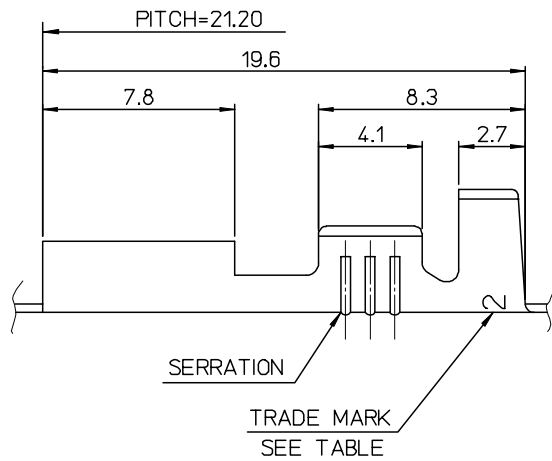
**Mates With**

[35725-18x0](#)

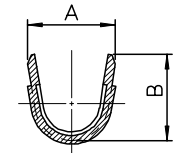


NOTES

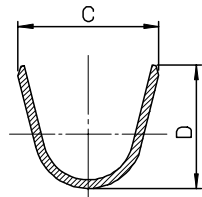
1. MATERIAL : BRASS, 0.35mm THICKNESS
2. RECOMMENDED LENGTH OF WIRE STRIP IS 5.2-5.8 mm
3. FINISH, TENSION : SEE TABLE



ENG. NO.	a	b	c	d	e	WIRE RANGE	PLATED	TRADE MARK	TENSION
35725-3600	5.2	4.6	6.3	6.3		AWG #14-#12	(UNPLATED)	MK2	STANDARD TENSION
35725-3700	3.5	3.5	5.7	5.0	2.9	AWG #18-#14			
35725-3800	2.85	2.9	3.8	3.8		AWG #22-#20			
35725-3610	5.2	4.6	6.3	6.3		AWG #14-#12	(POST-TIN PLATING)		
35725-3710	3.5	3.5	5.7	5.0	2.9	AWG #18-#14			
35725-3810	2.85	2.9	3.8	3.8		AWG #22-#20			
35725-3601	5.2	4.6	6.3	6.3		AWG #14-#12	(UNPLATED)	L MK2	LOW TENSION
35725-3701	3.5	3.5	5.7	5.0	2.95	AWG #18-#14			
35725-3801	2.85	2.9	3.8	3.8		AWG #22-#20			



SECTION B-B''



SECTION C-C''

REVISED	DESCRIPTION
EC NO: KOR2008-0030	
DRWN: JHPARK01	2007/09/10
CHKD: W. YANG	2007/09/10
APPR: YUNSIKKIM	2007/09/10
A	REV

QUALITY SYMBOLS	GENERAL TOLERANCES (UNLESS SPECIFIED)
▽=0	
▽=0	

GENERAL TOLERANCES (UNLESS SPECIFIED)	
	mm
	INCH
4 PLACES	± --- ± ---
3 PLACES	± --- ± ---
2 PLACES	± 0.3 ± ---
1 PLACE	± 0.3 ± ---
ANGULAR ± 1 °	
DRAFT WHERE APPLICABLE MUST REMAIN WITHIN DIMENSIONS	

DIMENSION STYLE MM ONLY	
DRAWN BY	DATE
JS. KANG	93/04/27
CHECKED BY	DATE
BK. CHOI	93/04/27
APPROVED BY	DATE
CW. LEE	93/04/27
MATERIAL NO.	
SEE TABLE	
SIZE	A3

SCALE	5:1
DESIGN UNITS	METRIC
THIRD ANGLE PROJECTION	
TITLE	
.250 SLIP-ON RECEPTACLE TERMINAL	
MOLEX INCORPORATED	
DOCUMENT NO.	SHEET NO.
SD-35725-3**0	1 OF 01
THIS DRAWING CONTAINS INFORMATION THAT IS PROPRIETARY TO MOLEX INCORPORATED AND SHOULD NOT BE USED WITHOUT WRITTEN PERMISSION	