

PLEASE CHECK WWW.MOLEX.COM FOR LATEST PART INFORMATION

Part Number: [0879571004](#)
Status: **Active**
Description: 2.50mm (.098") Pitch Header, Right Angle, Through Hole, 4 Circuits, Tin (Sn) Overall Plating, Tray Packaging, Lead-free

Documents:

[Drawing \(PDF\)](#) [RoHS Certificate of Compliance \(PDF\)](#)

General

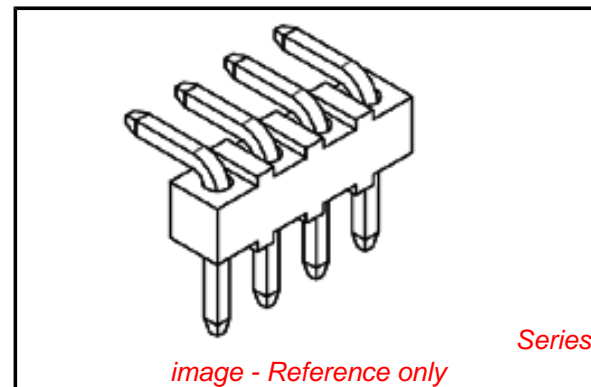
| | |
|----------------|-------------------------------|
| Product Family | PCB Headers |
| Series | 87957 |
| Application | Board-to-Board, Wire-to-Board |
| Product Name | N/A |

Physical

| | |
|--------------------------------|-----------------|
| Breakaway | Yes |
| Circuits (Loaded) | 4 |
| Circuits (maximum) | 4 |
| Color - Resin | Black |
| First Mate / Last Break | No |
| Glow-Wire Compliant | No |
| Guide to Mating Part | No |
| Keying to Mating Part | None |
| Lock to Mating Part | None |
| Material - Metal | Brass |
| Material - Plating Mating | Tin |
| Material - Plating Termination | Nickel |
| Material - Resin | Nylon |
| Number of Rows | 1 |
| Orientation | Right Angle |
| PC Tail Length (in) | 0.146 In |
| PC Tail Length (mm) | 3.71 mm |
| PCB Locator | No |
| PCB Retention | None |
| PCB Thickness Recommended (in) | 0.062 In |
| PCB Thickness Recommended (mm) | 1.60 mm |
| Packaging Type | Tray |
| Pitch - Mating Interface (in) | 0.098 In |
| Pitch - Mating Interface (mm) | 2.50 mm |
| Pitch - Term. Interface (in) | 0.098 In |
| Pitch - Term. Interface (mm) | 2.50 mm |
| Plating min: Mating (µin) | 200 |
| Plating min: Mating (µm) | 5.00 |
| Plating min: Termination (µin) | 49 |
| Plating min: Termination (µm) | 1.25 |
| Polarized to Mating Part | No |
| Polarized to PCB | No |
| Shrouded | No |
| Stackable | No |
| Surface Mount Compatible (SMC) | Yes |
| Temperature Range - Operating | -55°C to +105°C |
| Termination Interface: Style | Through Hole |

Electrical

| | |
|-------------------------------|------|
| Current - Maximum per Contact | 3A |
| Voltage - Maximum | 250V |



EU RoHS

ELV and RoHS Compliant
REACH SVHC
 Not Reviewed
Halogen-Free Status
 Not Reviewed

China RoHS



Need more information on product environmental compliance?

Email productcompliance@molex.com
 For a multiple part number RoHS Certificate of Compliance, [click here](#)

Please visit the [Contact Us](#) section for any non-product compliance questions.

Search Parts in this Series

[87957Series](#)

Mates With

KK® 2.50mm (.098") Crimp Terminal Housing

Solder Process Data

| | |
|--|------------------------|
| Duration at Max. Process Temperature (seconds) | 14 |
| Lead-free Process Capability | Wave Capable (TH only) |
| Max. Cycles at Max. Process Temperature | 1 |
| Process Temperature max. C | 265 |

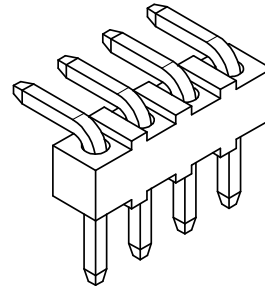
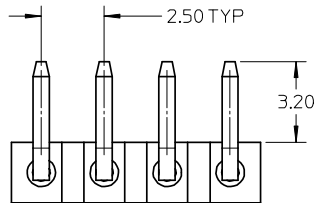
Material Info**Reference - Drawing Numbers**

| | |
|---------------|--------------|
| Sales Drawing | SD-87957-010 |
|---------------|--------------|

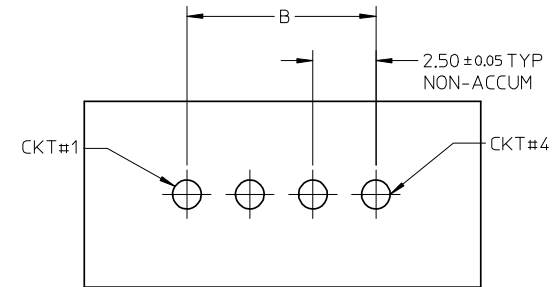
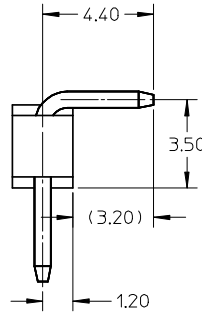
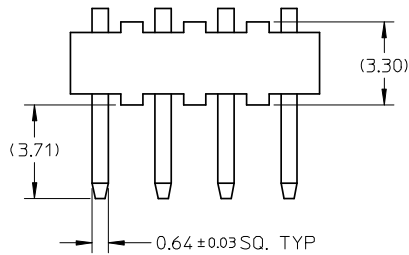
This document was generated on 04/05/2010

PLEASE CHECK WWW.MOLEX.COM FOR LATEST PART INFORMATION

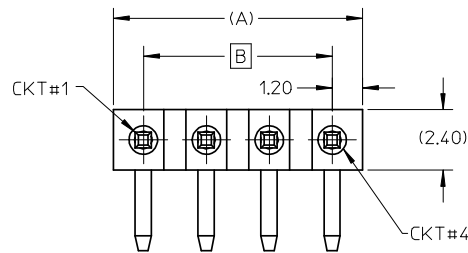
| PART NO FOR TRAY PACKAGING | CKT SIZE | DIMENSION | |
|----------------------------|----------|-----------|-------|
| | | A | B |
| 87957-1004 | 4 | 9.90 | 7.50 |
| 87957-1005 | 5 | 12.40 | 10.00 |
| 87957-1010 | 10 | 24.90 | 22.50 |



- NOTES:
- FOR ILLUSTRATION PURPOSE, 4 CKT SIZE IS AS SHOWN.
 - MATERIAL:
 - HOUSING: NYLON, GLASS-FILLED, UL94V-2
 - COLOR: BLACK.
 - TERMINAL: COPPER ALLOY, 0.64MM SQ
 - PLATING TYPE:
 - 5.00µm MIN TIN OVER
 - 1.25µm MIN NICKEL UNDERPLATE.
 - PIN PUSHOUT FORCE: 1KG MIN IN EITHER DIRECTION
 - PART TO BE PACKED IN TRAY
 - PRODUCT SPEC PS-87920-019 APPLIED
 - WAFER TO BE FLAT WITHIN 0.003mm/mm
 - RECOMMENDED PCB THICKNESS 1.60±0.10mm



RECOMMENDED PCB LAYOUT



| <p>NEW RELEASE EC NO: S2008-0979 DRWN:ATSEE 2008/06/25 CHKD:SKANG 2008/06/25 APPR:MLONG 2008/06/25</p> | <p>QUALITY SYMBOLS</p> <p>▽=0 ◻=0</p> | <p>GENERAL TOLERANCES (UNLESS SPECIFIED)</p> <table border="1"> <thead> <tr> <th></th> <th>mm</th> <th>INCH</th> </tr> </thead> <tbody> <tr> <td>4 PLACES</td> <td>± ---</td> <td>± ---</td> </tr> <tr> <td>3 PLACES</td> <td>± ---</td> <td>± ---</td> </tr> <tr> <td>2 PLACES</td> <td>± 0.20</td> <td>± ---</td> </tr> <tr> <td>1 PLACE</td> <td>± ---</td> <td>± ---</td> </tr> </tbody> </table> <p>ANGULAR ± 3 °</p> | | mm | INCH | 4 PLACES | ± --- | ± --- | 3 PLACES | ± --- | ± --- | 2 PLACES | ± 0.20 | ± --- | 1 PLACE | ± --- | ± --- | <p>DIMENSION STYLE</p> <p>MM ONLY</p> | <p>SCALE</p> <p>NTS</p> | <p>DESIGN UNITS</p> <p>METRIC</p> | <p>THIRD ANGLE PROJECTION</p> |
|---|--|--|-----------------------|--|-------|----------|------------|---|----------|------------|-------------|----------|--------|-------|------------|-------|--------------------------------------|---|--------------------------------|-----------------------------------|-------------------------------|
| | | mm | INCH | | | | | | | | | | | | | | | | | | |
| | 4 PLACES | ± --- | ± --- | | | | | | | | | | | | | | | | | | |
| | 3 PLACES | ± --- | ± --- | | | | | | | | | | | | | | | | | | |
| 2 PLACES | ± 0.20 | ± --- | | | | | | | | | | | | | | | | | | | |
| 1 PLACE | ± --- | ± --- | | | | | | | | | | | | | | | | | | | |
| | | <table border="1"> <thead> <tr> <th>DRAWN BY</th> <th>DATE</th> <th>TITLE</th> </tr> </thead> <tbody> <tr> <td>ATSEE</td> <td>2008/01/25</td> <td rowspan="2">CUSTOM HEADER 2.50MM SINGLE ROW HEADER SINGLE WAFER RIGHT ANGLE</td> </tr> <tr> <td>SKANG</td> <td>2008/02/05</td> </tr> <tr> <td>APPROVED BY</td> <td>DATE</td> <td></td> </tr> <tr> <td>MLONG</td> <td>2008/02/06</td> <td></td> </tr> </tbody> </table> | DRAWN BY | DATE | TITLE | ATSEE | 2008/01/25 | CUSTOM HEADER 2.50MM SINGLE ROW HEADER SINGLE WAFER RIGHT ANGLE | SKANG | 2008/02/05 | APPROVED BY | DATE | | MLONG | 2008/02/06 | | <p>MATERIAL NO.</p> <p>SEE TABLE</p> | <p>DOCUMENT NO.</p> <p>SD-87957-010</p> | <p>SHEET NO.</p> <p>1 OF 1</p> | | |
| DRAWN BY | DATE | TITLE | | | | | | | | | | | | | | | | | | | |
| ATSEE | 2008/01/25 | CUSTOM HEADER 2.50MM SINGLE ROW HEADER SINGLE WAFER RIGHT ANGLE | | | | | | | | | | | | | | | | | | | |
| SKANG | 2008/02/05 | | | | | | | | | | | | | | | | | | | | |
| APPROVED BY | DATE | | | | | | | | | | | | | | | | | | | | |
| MLONG | 2008/02/06 | | | | | | | | | | | | | | | | | | | | |
| | | <p>DRAFT WHERE APPLICABLE MUST REMAIN WITHIN DIMENSIONS</p> | <p>SIZE</p> <p>A3</p> | <p>THIS DRAWING CONTAINS INFORMATION THAT IS PROPRIETARY TO MOLEX INCORPORATED AND SHOULD NOT BE USED WITHOUT WRITTEN PERMISSION</p> | | | | | | | | | | | | | | | | | |
| A1 | REV | | | | | | | | | | | | | | | | | | | | |