

PLEASE CHECK WWW.MOLEX.COM FOR LATEST PART INFORMATION

Part Number: [0780451060](#)
Status: **Active**
Overview: milligrd
Description: 2.00mm (.079") Pitch, Milli-Grid™ Crimp Housing, 10 Circuits, with Center Polarization Key and side Locking Ramps, Leadfree

Documents:

[3D Model](#) [Product Specification PS-78045-001 \(PDF\)](#)
[Drawing \(PDF\)](#) [RoHS Certificate of Compliance \(PDF\)](#)

Agency Certification

UL E29179

General

Product Family Crimp Housings
 Series [78045](#)
 Comments Applicable Wire Range: AWG #24 - #30
 Overview [milligrd](#)
 Product Name Milli-Grid™

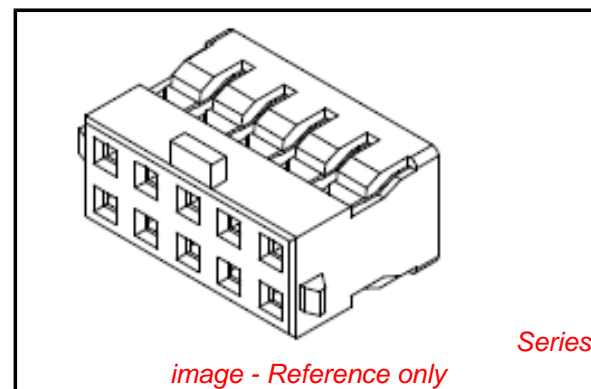
Physical

Breakaway No
 Circuits (maximum) 10
 Color - Resin Black
 Flammability 94V-0
 Gender Female
 Glow-Wire Compliant No
 Lock to Mating Part Yes
 Material - Resin Polyester
 Number of Rows 2
 Packaging Type Bag
 Panel Mount No
 Pitch - Mating Interface (in) 0.079 In
 Pitch - Mating Interface (mm) 2.00 mm
 Polarized to Mating Part Yes
 Stackable Yes
 Temperature Range - Operating -40°C to +105°C

Material Info

Reference - Drawing Numbers

Product Specification PS-78045-001
 Sales Drawing SD-78045-001



EU RoHS

ELV and RoHS Compliant
REACH SVHC Contains SVHC: No
Halogen-Free Status

China RoHS



Not Halogen-Free
Need more information on product environmental compliance?

Email productcompliance@molex.com
 For a multiple part number RoHS Certificate of Compliance, [click here](#)

Please visit the [Contact Us](#) section for any non-product compliance questions.

Search Parts in this Series

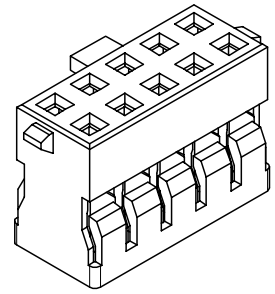
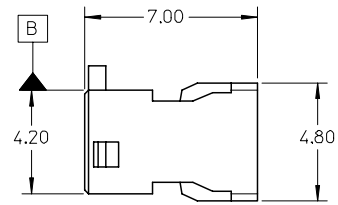
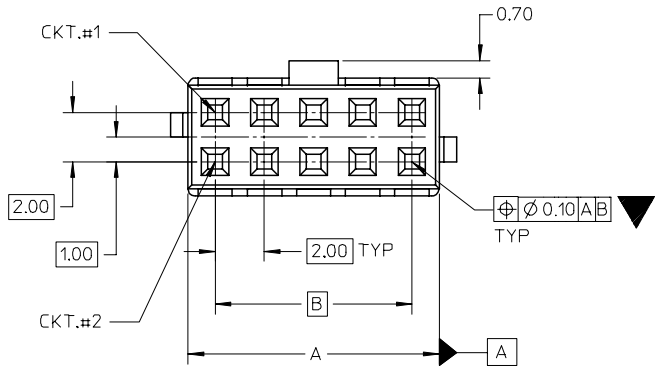
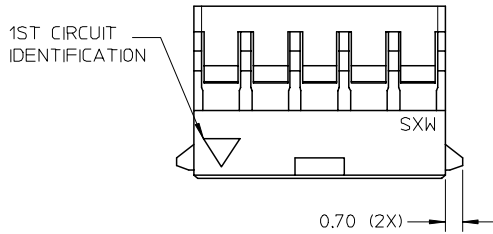
[78045Series](#)

Use With

[50394-8xxx Crimp Terminals](#)

10 9 8 7 6 5 4 3 2 1

PART NUMBER	CKT SIZE	A	B
78045-0460	4	4.20	2.00
78045-0660	6	6.20	4.00
78045-0860	8	8.20	6.00
78045-1060	10	10.20	8.00
78045-1260	12	12.20	10.00



NOTES:

1. MATERIAL: HOUSING - PBT, GLASS FILLED, UL 94V-0, COLOR: BLACK.
2. FOR ILLUSTRATION PURPOSES, 10 CKT SIZE HSG. IS SHOWN.
3. PARTS TO BE USED WITH CRIMP TERMINAL PART NUMBER 50394-8***.
4. APPLICABLE WIRE RANGE : AWG #24 - #30.
5. WIRE INSULATION RANGE : DIAMETER 1.40MM MAXIMUM.

REVISED EC NO: S2007-0473 DRWN:SKANG CHKD:MLONG APPR:SKTOH	2006/11/21 2006/11/21 2006/11/22	DESCRIPTION REV	QUALITY SYMBOLS	GENERAL TOLERANCES (UNLESS SPECIFIED) 4 PLACES ± --- ± --- 3 PLACES ± --- ± --- 2 PLACES ± 0.2 ± --- 1 PLACE ± --- ± --- ANGULAR ± 1 °	DIMENSION STYLE	SCALE	DESIGN UNITS	THIRD ANGLE PROJECTION
			▼=1 ▽=0		MM ONLY	NTS	METRIC	
					DRAWN BY	DATE	TITLE	
					CHECKED BY	DATE		
					APPROVED BY	DATE	MGRID, 2MM, W-T-B CRIMP RECEPTACLE HSG W/SIDE LOCKS	
					SKTOH	2006/06/09	MOLEX INCORPORATED	
					MATERIAL NO.	DOCUMENT NO.	SD-78045-001	
					SEE TABLE		SHEET NO. 1 OF 1	
					DRAFT WHERE APPLICABLE MUST REMAIN WITHIN DIMENSIONS			
					THIS DRAWING CONTAINS INFORMATION THAT IS PROPRIETARY TO MOLEX INCORPORATED AND SHOULD NOT BE USED WITHOUT WRITTEN PERMISSION			

9 8 7 6 5 4 3 2 1