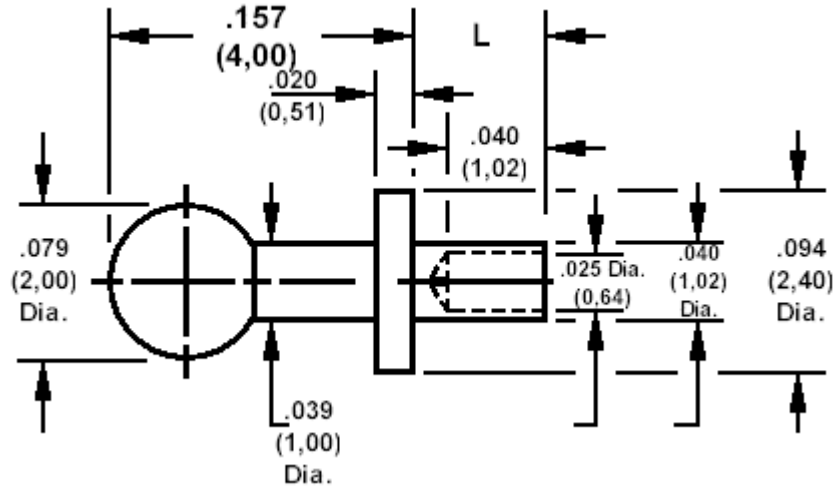


## 460-8452 Connectaball, swage mount

Recommended mounting hole  $.043 (1,10) \pm .002 (0,05)$



### How to order code

**460-8452-XX-YY-00**

Basic Part No XX = Board Thickness, YY = plating finish

DIMENSIONS		
Dash No (XX)	'L'	Board Thickness
-01	.051 (1,30)	.031 (0,79)
-02	.082 (2,08)	.062 (1,57)
-03	.113 (2,87)	.094 (2,39)

MATERIALS					
Component	Material	Finish			
		-01	-03	-93	-04
Terminal	Brass	Silver	Gold over Nickel		Tin
			50 $\mu$ " (1,25 $\mu$ M) Au	10 $\mu$ " (0,25 $\mu$ M) Au	

TOOLING	
Anvil	435-8053-01-00-00
Flare	435-6690-01-00-00