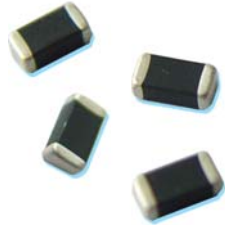
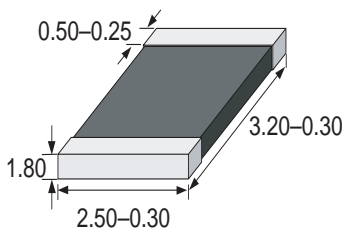


TVS 1210 SMD

This product is not recommended for new designs. Please refer to Littelfuse series MLA.



Dimensions (mm)



Multilayer Ceramic Transient Voltage Suppressor Low Capacity

Features

Thin layer, high precise techniques
Lead free
Bi-directional clamping
Standard and low capacity
Available with Nickel/Tin end termination

Applications

Circuit board and ESD, EFT

Protection of:

- I/O ports
- Keyboards
- LCD's
- Sensors

WebLinks

Further info see:

www.wickmanngroup.com

Further technical info see technical varistor file:

www.wickmanngroup.com/download/techvaristor.pdf

Specifications

Packaging

Tape and Reel
T 7 inch reel (2.000 pcs.)

Material

Body: Ceramic (ZnO)
Terminals: Ni/Sn plated (code "P")
Ag/Pt/Pd non plated (code "N" on request)

Operating Temperature

-55 to +125°C

Solderability

acc. to IEC 60068-2-58
235°C, 2s

Soldering Heat Resistance

260°C, 10 sec. (IEC 60068-2-58)
280°C, 5 sec. (IEC 60068-2-58)

Response Time

<0.5ns

Temperature coefficient (αV) of clamping voltage (V_c) @ specified test current

<0.01%/°C

Power dissipation

0.15W max.

Standards

IEC 61000-4-2
MIL-STD-883C

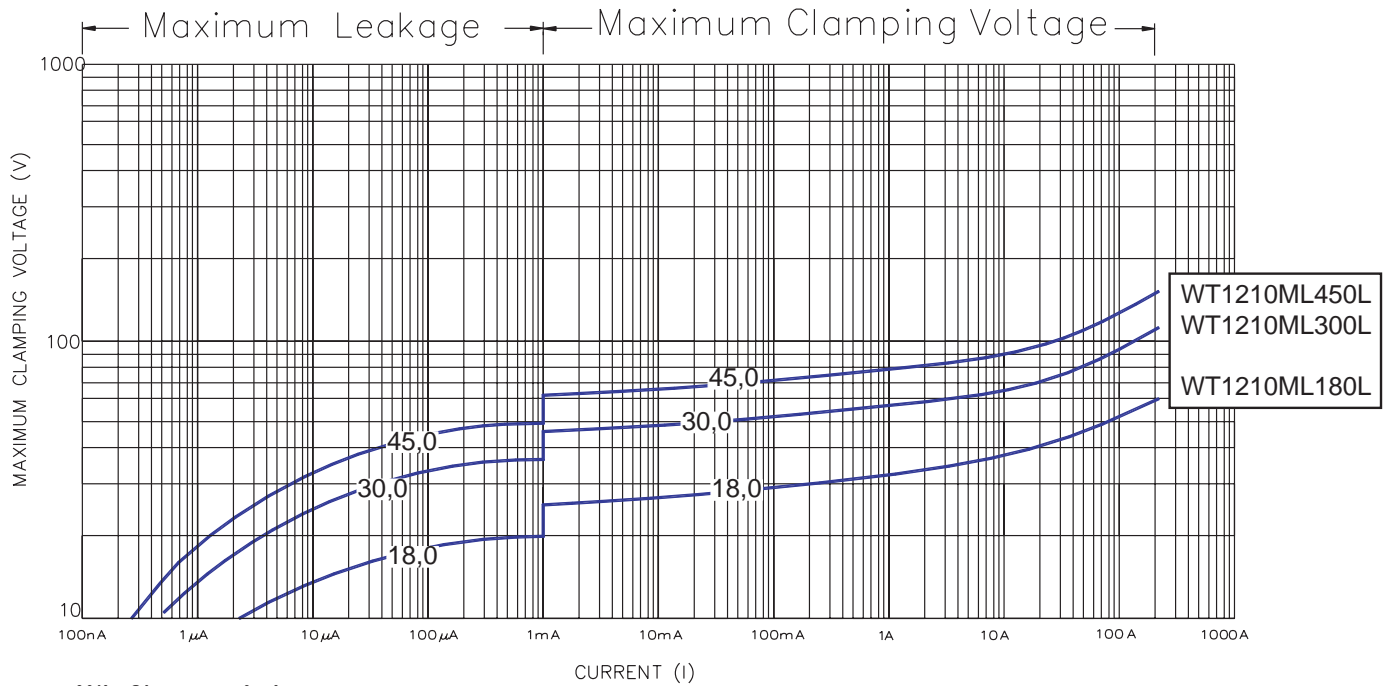
Type	Maximum Ratings (125°C)				Specifications (25°C)				
	max. cont. working voltage		max. non-repetitive surge current (8/20 μs)	max. non-repetitive surge energy (10/1000 μs)	nominal voltage at 1mA (DC) test current		typ. capacitance		typ. inductance
	V _{M(DC)} (V)	V _{M(AC)} (V)	I _{TM} (A)	W _{TM} (J)	V _{N(DC)min.} (V)	V _{N(DC)max.} (V)	1KHz C _{typ.} (pF)	1MHz C _{typ.} (pF)	L _{typ.} (nH)
WT1210ML180L	18,0	14,0	200	1,50	22,0	28,0	1900	1660	1,8
WT1210ML300L	30,0	25,0	200	0,90	35,0	43,0	720	630	1,8
WT1210ML450L	45,0	35,0	220	0,90	50,0	61,0	380	315	1,8

Order Information

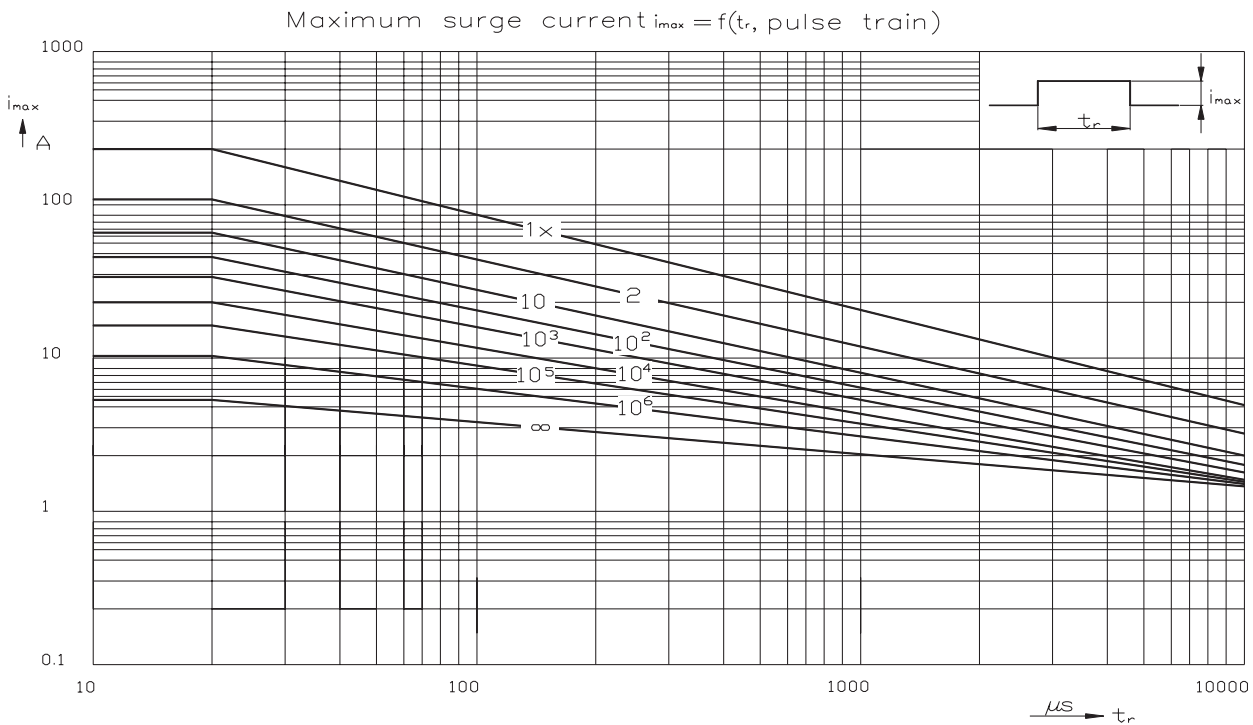
Qty.	Order-Number	Type	Terminal Code	Packaging
		WT1210ML180	L	T

Specifications are subject to change without notice

TVS 1210 SMD

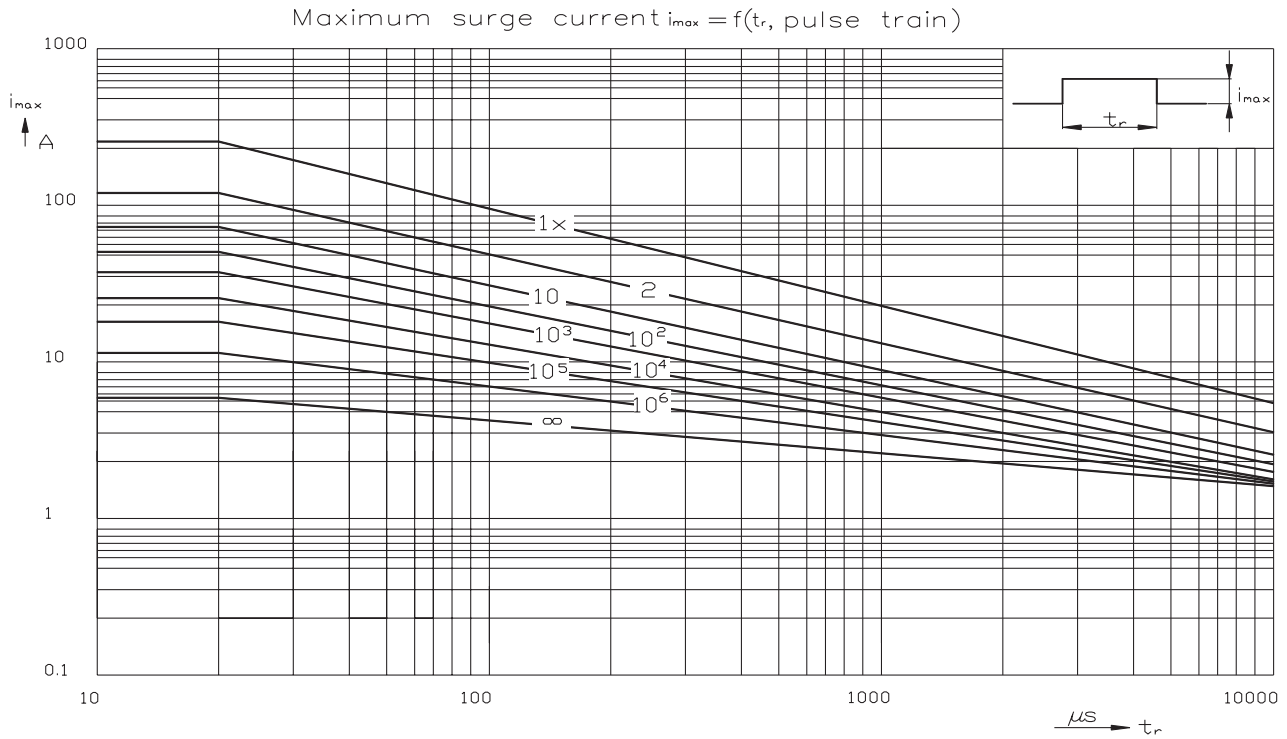


V/I Characteristics



Maximum Surge Current: WT1210ML180L - WT1210ML300L

TVS 1210 SMD



Maximum Surge Current: WT1210ML450L