

PLEASE CHECK WWW.MOLEX.COM FOR LATEST PART INFORMATION

Part Number: **0334820604**
Status: **Active**
Overview: mx150 sealed connector system
Description: 3.50mm (.138") Pitch MX150™ Sealed Male Connector, Dual Row, 6 Circuits, Polarization D, without Connector Position Assurance, Green

Documents:

3D Model	Product Specification PS-33472-000 (PDF)
Application Specification (PDF)	RoHS Certificate of Compliance (PDF)
Drawing (PDF)	



General

Product Family	Crimp Housings
Series	<u>33482</u>
Comments	No Connector Position Assurance (CPA)
More Detailed Tech Information	http://ewcap.uscarteams.org
Overview	<u>mx150 sealed connector system</u>
Product Name	MX150™

Physical

Circuits (maximum)	6
Circuits Detail	6
Color - Resin	Black, Green, Natural
Gender	Male
Glow-Wire Compliant	No
Keying to Mating Part	Yes
Lock to Mating Part	Yes
Material - Resin	Modified Polystyrene Alloy
Number of Rows	2
Packaging Type	Bag
Panel Mount	No
Pitch - Mating Interface (in)	0.138 In
Pitch - Mating Interface (mm)	3.50 mm
Polarized to Mating Part	Yes
Stackable	No
Temperature Range - Operating	-40°C to +125°C

Electrical

Current - Maximum per Contact	22A
-------------------------------	-----

Material Info

Reference - Drawing Numbers

Application Specification	AS-33472-100
Packaging Specification	PK-30907-811, PK-31300-635
Product Specification	PS-33472-000
Sales Drawing	SD-33482-061

EU RoHS

ELV and RoHS Compliant

REACH SVHC

Contains SVHC: No

Halogen-Free

Status

Not Reviewed

China RoHS



Need more information on product environmental compliance?

Email productcompliance@molex.com
 For a multiple part number RoHS Certificate of Compliance, [click here](#)

Please visit the [Contact Us](#) section for any non-product compliance questions.

Search Parts in this Series

33482Series

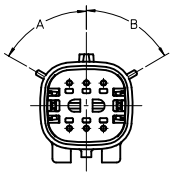
Mates With

33472 Female Dual Row Sealed Connector

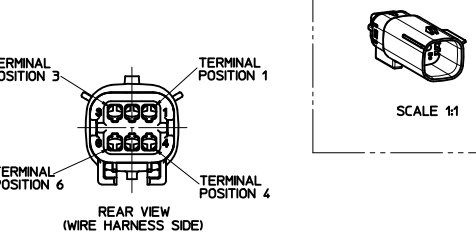
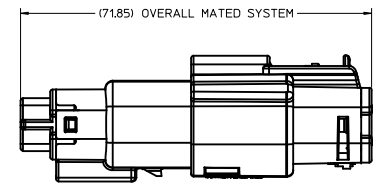
Use With

33000 MX150™ Tin (Sn) Male Terminal,
33011 Gold (Au) Male Terminal

ASSEMBLY PART NUMBER	COLOR	KEYING OPTION	DIMENSIONS (DEGREES)		CAVITY TYPE & STATUS (X = PLUGGED)						STATUS
			A	B	1	2	3	4	5	6	
33482-0601	BLACK	A	60	60							SALEABLE
33482-0602	LT.GRAY	B	25	60							DESIGN CONCEPT
33482-0603	BROWN	C	60	25							DESIGN CONCEPT
33482-0604	GREEN	D	25	25							DESIGN CONCEPT
33482-0605			VOIDED								
33482-0606	BLACK	A	60	60			X				SALEABLE
33482-0607	LT.GRAY	B	25	60			X				DESIGN CONCEPT
33482-0608	BROWN	C	60	25			X				DESIGN CONCEPT
33482-0609	GREEN	D	25	25			X				DESIGN CONCEPT
33482-0610			VOIDED								
33482-0611	BLACK	A	60	60			X	X			SALEABLE
33482-0612	LT.GRAY	B	25	60			X	X			DESIGN CONCEPT
33482-0613	BROWN	C	60	25			X	X			DESIGN CONCEPT
33482-0614	GREEN	D	25	25			X	X			DESIGN CONCEPT
33482-0615			VOIDED								
33482-0616	BLACK	A	60	60			X				SALEABLE
33482-0617	BLACK	A	60	60		X					SALEABLE
33482-0618	BLACK	A	60	60				X	X		SALEABLE
33482-0619	BLACK	A	60	60		X	X	X	X		SALEABLE
33482-0620	BLACK	A	60	60	X	X	X	X	X		SALEABLE
33482-0621	BLACK	A	60	60	X		X	X			SALEABLE
33482-0622	BLACK	A	60	60			X	X	X		SALEABLE
33482-0623	BLACK	A	60	60			X				SALEABLE
33482-0624	BLACK	A	60	60					X		SALEABLE
33482-0625	LT.GRAY	B	25	60	X			X			DESIGN CONCEPT
33482-0626	BLACK	A	60	60	X	X	X	X			SALEABLE
33482-0627	BLACK	A	60	60	X	X	X	X			SALEABLE



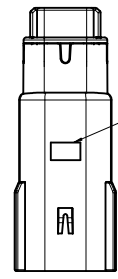
KEYING OPTION
SEE TABLE
SCALE 2:1



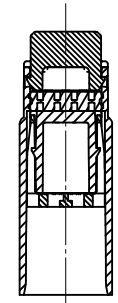
REAR VIEW
(WIRE HARNESS SIDE)



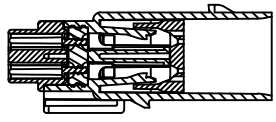
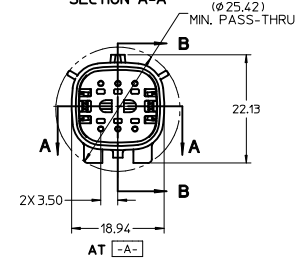
SCALE 1:1



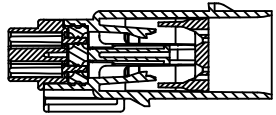
OPTIONAL TRACEABILITY
INFORMATION LOCATED IN
THIS AREA



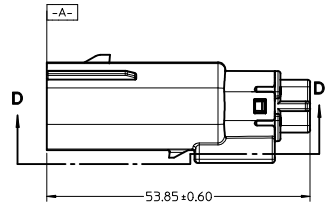
SECTION A-A



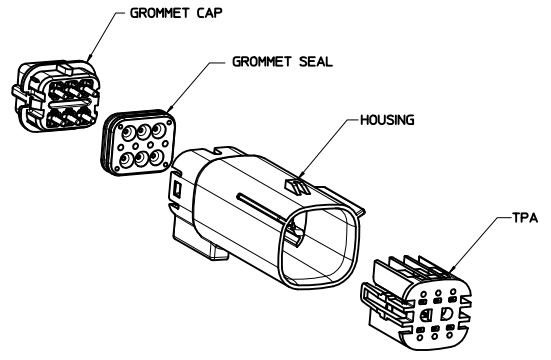
SECTION B-B
(BLADE SHOWN IN FULL-LOCK POSITION)
SEE NOTE 2



SECTION C-C
(BLADE SHOWN IN PRE-LOCK POSITION)
SEE NOTE 2



SECTION D-D



NOTES: UNLESS OTHERWISE SPECIFIED

- DESIGNED TO MATE WITH RECEPTACLE HOUSING ASSEMBLY SPECIFIED IN MOLEX CHARTED DRAWING SD-33472-061.
- ASSEMBLY SHIPPED WITH BLADE INSERT IN PRE-LOCK POSITION (SEE SECTION D-D PRE-LOCK). UPON FULL TERMINAL ASSEMBLY, EACH BLADE INSERT MUST BE SNAPPED INTO ITS FINAL-LOCK POSITION.
- FOR BLADE TERMINALS TO BE USED WITH THIS ASSEMBLY, SEE DRAWING SD-33000-001.
- SYSTEM TO BE USED WITH WIRE WITHIN DIAMETER RANGE OF 1.5mm TO 2.5mm.
- MATERIAL: SPS/NYLON BLEND, 20% GLASS FILLED.
- SHALL CONFORM TO PACKAGING SPECIFICATION PK-31300-635.
- SHALL CONFORM TO PRODUCT SPECIFICATION PS-33472-000.
- ASSEMBLY CONFORMS TO SAE/USCAR-2 REV 4 WITH THE FOLLOWING EXCEPTIONS:
TERMINAL INSERTION FORCE FOR WIRE SIZE ABOVE 2.5mm NOT EXCEEDING 2.69mm SHALL NOT EXCEED 45 NEWTONS.

REDRAWN EC NO: UAU2010-1806 DRAWN BY: CHYKORRFFTHS CHECKED BY: APPR:VKOSHY 2010/06/03 2010/06/11	QUALITY SYMBOLS	GENERAL TOLERANCES (UNLESS SPECIFIED)	DIMENSION STYLE	SCALE	DESIGN UNITS	THIRD ANGLE PROJECTION
	▽=0 ▽=0	mm INCH 4 PLACES ±--- ±--- 3 PLACES ±--- ±--- 2 PLACES ±0.10 ±--- 1 PLACE ±0.3 ±--- ANGULAR ± 3°	MM ONLY	2:1	METRIC	DMARCOUX 06-17-02 DGRIFFFTHS 06-17-02 VKOSHY 2010/03/12
	DRAFT WHERE APPLICABLE MUST REMAIN WITHIN DIMENSIONS	MATERIAL NO. AS NOTED DOCUMENT NO. SD-33482-061	TITLE: MX150 BLADE CONNECTOR ASSEMBLY 2 ROW SEALED, 6 WAY MOLEX INCORPORATED	SHEET NO. 1 OF 1		