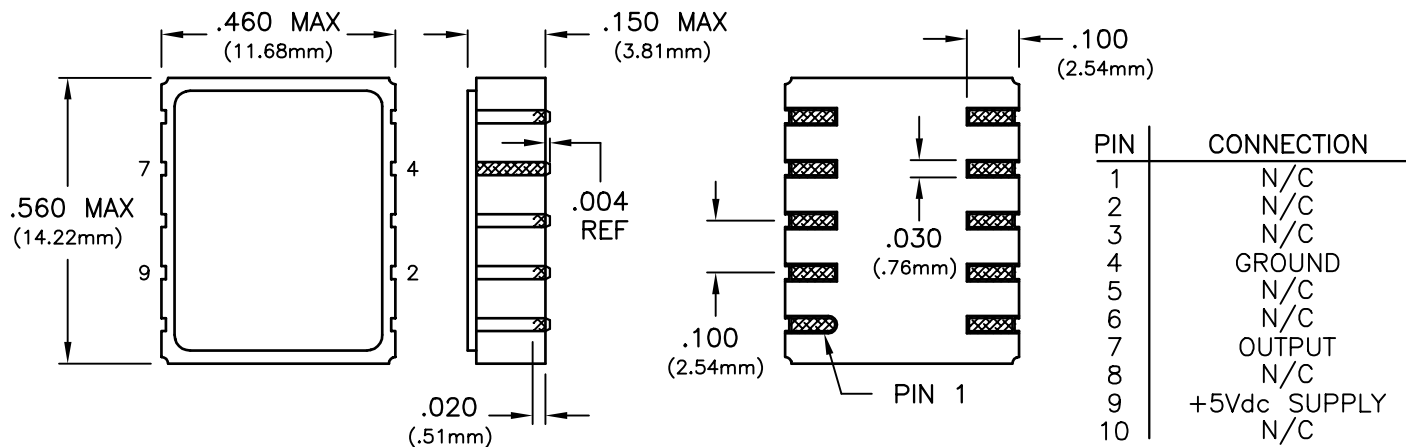


**ADVANCED CMOS SURFACE MOUNT**

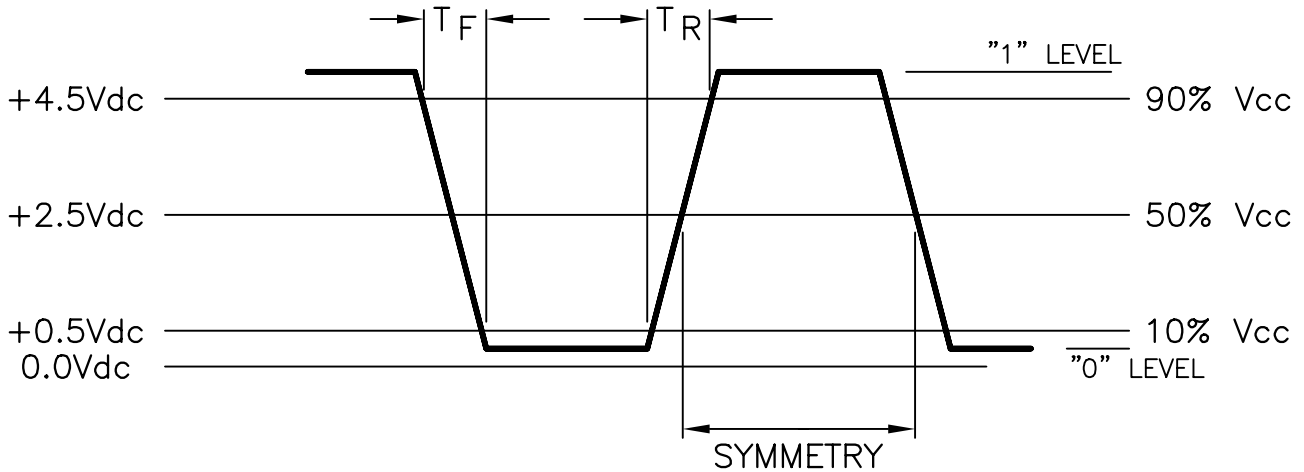
SPECIFICATIONS	ASM61	ASM62	ASM63	ASM64	
Frequency Range	14MHz to 150MHz				
Frequency Stability	±25ppm	±50ppm	±100ppm	±20ppm	
	(Inclusive of calibration tolerance at 25°C and operating temperature range)				
Temperature Range	-40°C to +85°C				
Output	Waveform	CMOS Squarewave, TTL Compatible			
	Load	50pF			
	Voltage	Voh	4.40V Minimum		
		Vol	0.44V Maximum		
	Current	Ioh	-24mA		
		Iol	24mA		
	Duty Cycle	45/55 Maximum			
Rise/Fall Time	3nS				
Start Up Time	10mS Maximum				
Supply Voltage	+5Vdc ±10%				
Supply Current	100mA Maximum				
Package	Hermetically sealed, leadless ceramic package				

**WARNING!** Do not insert oscillator into a hot circuit. Failure to comply will result in damage to oscillator.

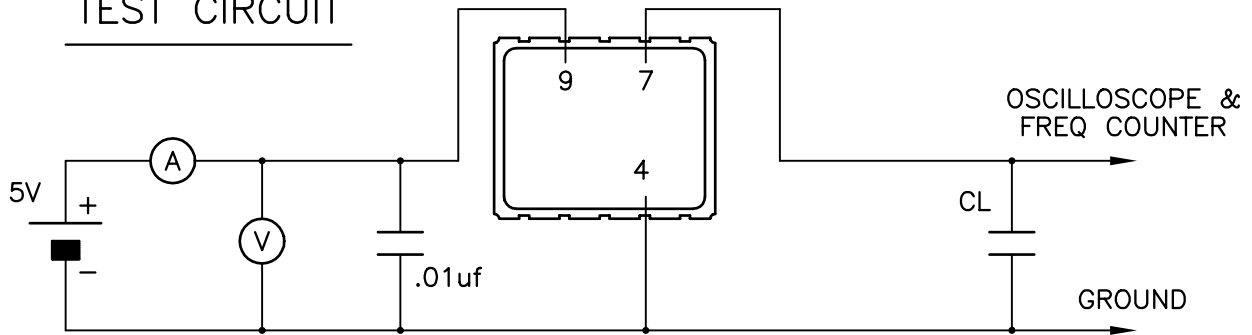


**ADVANCED CMOS SURFACE MOUNT**

OUTPUT WAVEFORM



TEST CIRCUIT



SUGGESTED PAD LAYOUT

