

MP-6802T

User's Manual

Edition: 1.0

2009/02/11



Copyright

The trademarks mentioned in the manual are legally registered to their respective companies.

Disclaimer

Notice

The written content provided with this product is the property of Taiwan Commate. No part of this manual may be reproduced, copied, transmitted in any form or by any means without prior written permission of Taiwan Commate.

Manual Classification

In order to assist in the use of this product, Taiwan Commate has categorized the user manual. For detailed product information and specifications, please carefully read the "Product User Manual".

Trademark

All trademarks are the property of their respective holders.

Any questions please visit our website at <http://www.commell.com.tw>

Packing List:

Please check package component before you use our products.

MP-6802T Card

Quick Installation Guide

CD for manual and Demo drivers

Cable Kit (Com Cable, Camera Cable)

Cable Kit:



Camera Cable X1



Com Cable X1

Index

Chapter 1 <Introduction>	6
1.1 <General Information>	6
1.2 <Connector Location>	7
1.2.1 <VIDEO Port>.....	7
1.3 <Driver Setting>	8
1.4 <Sample Program>	13
1.4.1 <Preview>.....	14
1.4.2 <Video Motion>	16
Contact Information	19

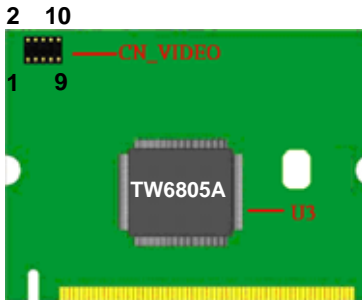
(This Page is left for Blank)

Chapter 1 <Introduction>

1.1 <General Information>

General Specification	
Form Factor	1 ~ 4 video input Mini-PCI Capture Card
Video Decode Chipset	One TW6805A
Chipset Option	Two 10bit video CMOS analog/ digit controller (ADCs)
Output Type	NTSC (M), NTSC (4.43), PAL (B, D, G, H, I), PAL (M), PAL (N), PAL (60) and SECAM (M)
Resolution	NTSC 720*480 , NTSC 640*480 , NTSC 320*240 , NTSC 160*120 / PAL 720*576 , PAL 384*288 , PAL 192*144
Internal I/O Cable	1 X VIDEO Cable
External I/O Cable	1 X 1~4 channel video input (BNC connector) Cable
Dimensions (W x L)	45mm x 60mm

1.2 <Connector Location>



1.2.1 <VIDEO Port>

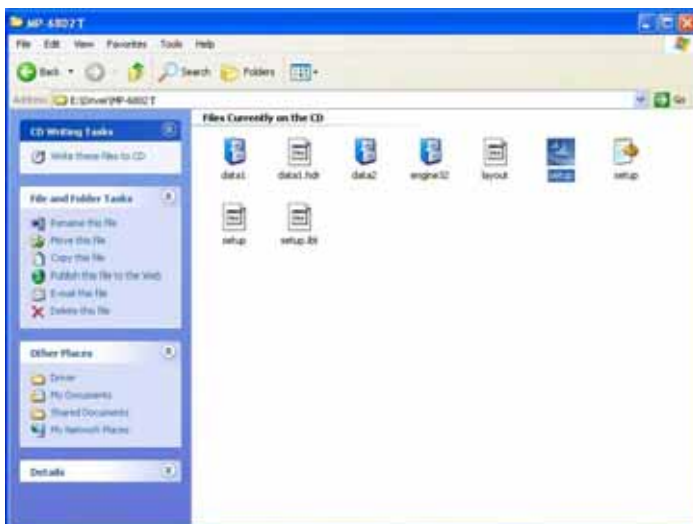
Connector: **CN_VIDEO**

Type: 10-pin (5 x 2) connector

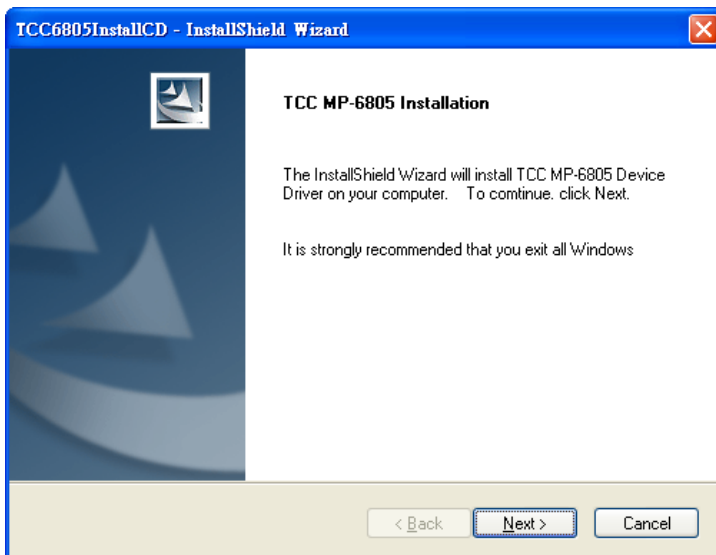
Pin NO.	Signals	Pin NO.	Signals
1	VIDEO1	2	VIDEO2
3	VIDEO3	4	VIDEO4
5	GND	6	N/C
7	N/C	8	N/C
9	N/C	10	N/C

1.3 <Driver Setting>

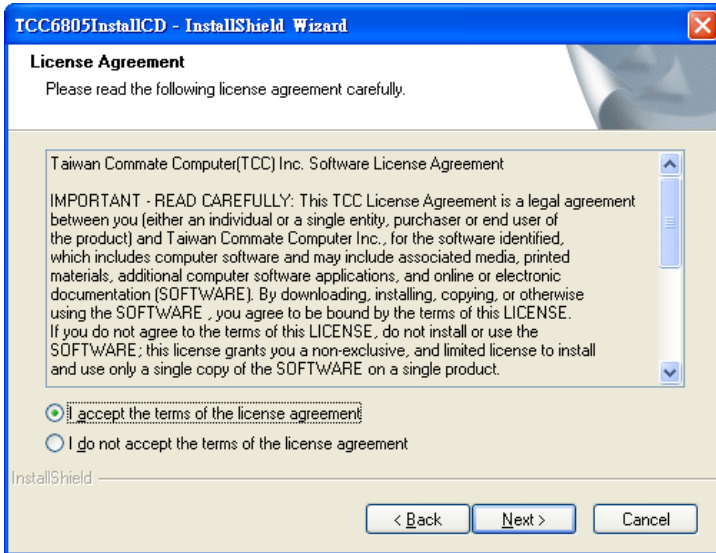
1. When completed the Hardware installation, Please select the file location **X:\Driver\MP-6802T\SETUP**.



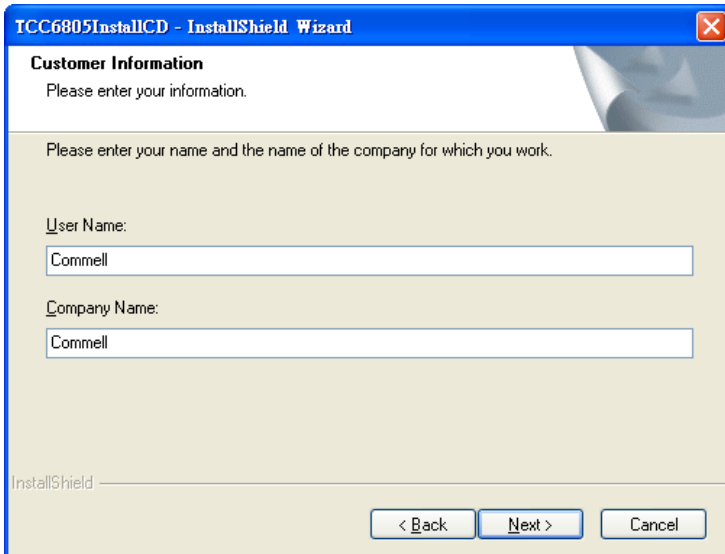
2. Please choose **“Next”**.



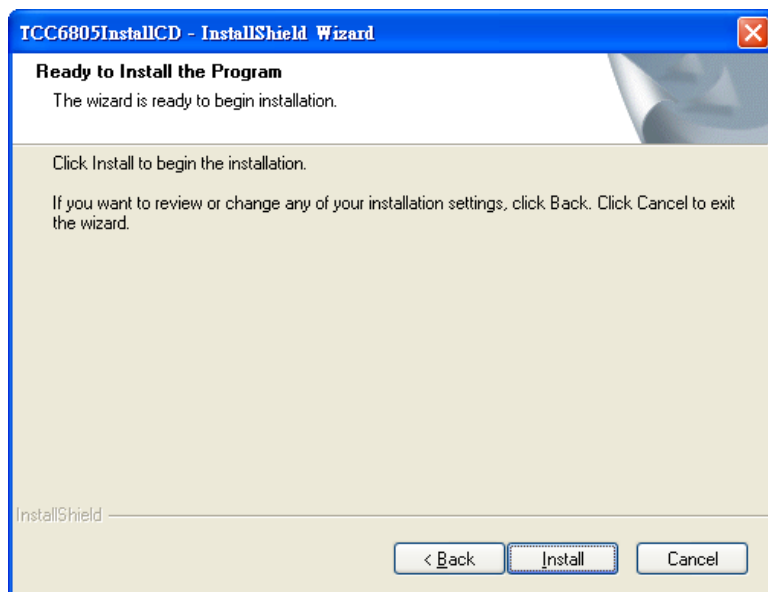
3. Please choose **“I accept the terms of the license agreement”** the press **“Next”**.



4. Please fill in **“User Name”** and **“Company Name”** then press **“Next”**.



5. Please choose “Install”.



6. Please TCC MP6805 D21 Capture and TCC6805A21 Audio Capture both choose “Continue Anyway”.



Hardware Installation

The software you are installing for this hardware:

TCC6805A21 Audio Capture

has not passed Windows Logo testing to verify its compatibility with Windows XP. ([Tell me why this testing is important.](#))

Continuing your installation of this software may impair or destabilize the correct operation of your system either immediately or in the future. Microsoft strongly recommends that you stop this installation now and contact the hardware vendor for software that has passed Windows Logo testing.

Continue Anyway

STOP Installation

7. Please choose **“Yes, I want to restart my computer now.”** the press **“Finish”.**

TCC6805InstallCD - InstallShield Wizard**TCC MP-6805 Installation Completed.**

The InstallShield Wizard has successfully installed TCC6805InstallCD. Before you can use the program, you must restart your computer.

Yes, I want to restart my computer now.

No, I will restart my computer later.

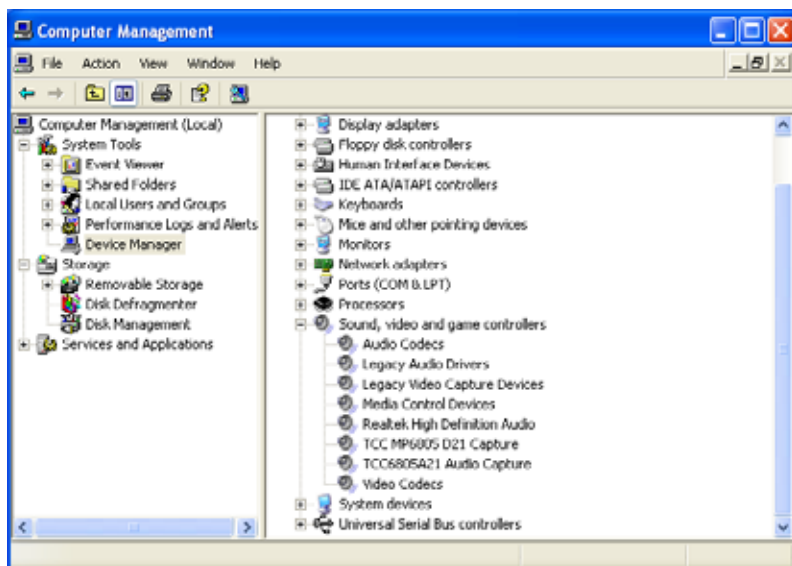
Remove any disks from their drives, and then click Finish to complete setup.

< Back

Finish

Cancel

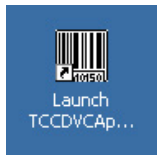
8. After driver install, please enter Device Manager, Driver Install OK!!



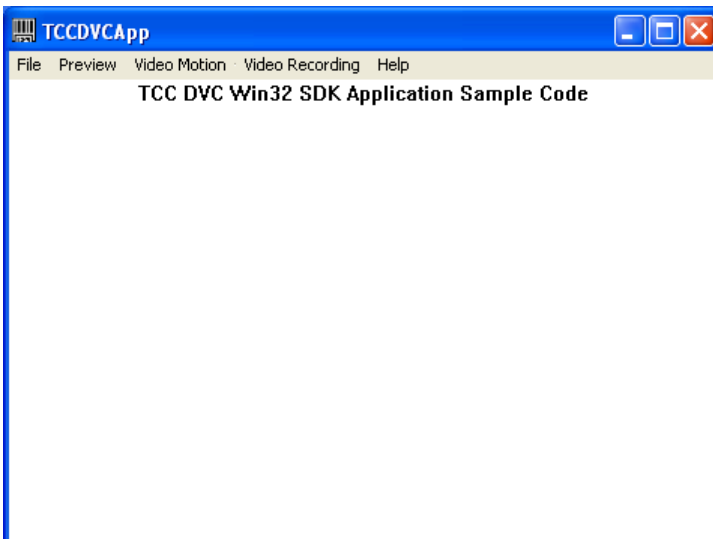
1.4 <Sample Program>

1. You can use COMMELL “**TCCVDCApp**” as your sample program to start your application or as a test application for learning the functionality of TCCDVC application and DII library. User can find the execution application on desktop window or find the source code and execution files in directory **C:\Profram Files\Commate\TCC6805**.

By running TCCDVCApp.exe

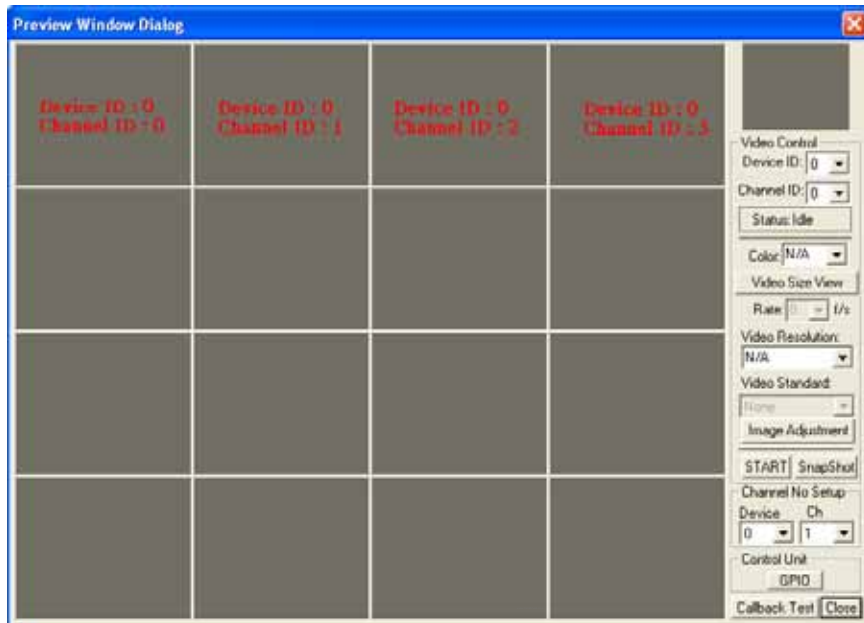


2. Please choose “Preview”.

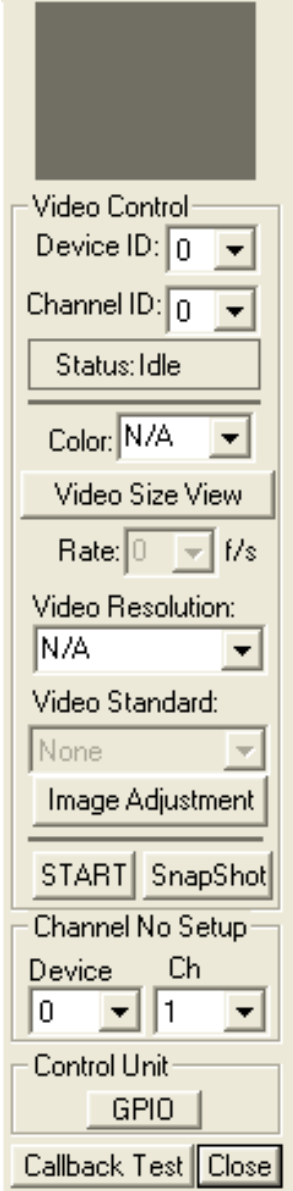


1.4.1 <Preview>

1. If you Setting 0 Device as 4 Channels. The program show will be as following.

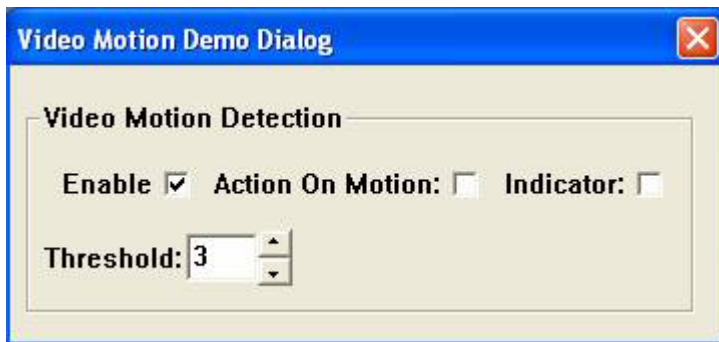


Explanation of Sample program function

	<p>Device ID: It is mean Techwell Chipset. One MP-6802 (T) have 1 chipset, so, Then you can see “Channel No Setup” Device: 0.</p> <p>Channel ID: Per chip can support 4 Video input, So, Then you can select 0/1/2/3 for Video input. But you'll need to set “Channel No Setup” Ch first.</p> <p>Channel No Setup: Please set number of video-In channels per Device. Per device is allowing 4 channels.</p> <p>Snapshot: Catch the image on working channel.</p> <p>Callback Test: Catch the series image on working channel</p>
--	---

1.4.2 <Video Motion>

Please choose “Video Motion”, then you can see program interface as following.

**Enable:**

If user “ check ” this box, it will enable video motion detection.

Action On Motion:

If this box is checked, the registered call back function will be executed, when video motion is been detected. The call back function needs to be registered during application initialization.

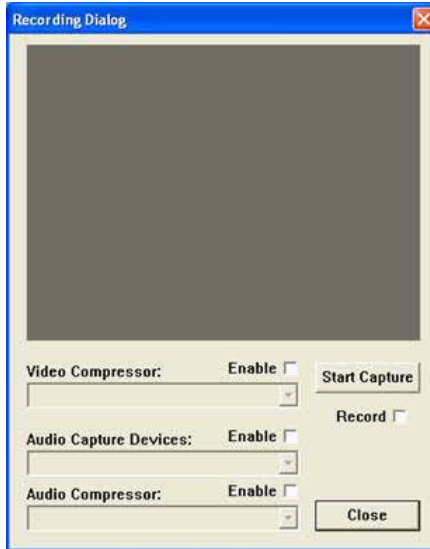
Indicator:

If this box is checked, it will show red spots as an motion indication, when the video motion is been detected.

Threshold:

Select motion detection sensitivity level, the number smaller, the sensitivity stronger.

Please choose "Video Recording", then you can see program interface as following.



Video Compressor:

Enable video compressor link, the list box window will list all video compressor components in the system. The user can select its own video compressor from the list, if user has installed own video compressor.

Audio Capture Devices:

Enable audio capture device link, the list box window will list all audio capture device in the system. The user can select one of audio device from the list.

Audio Compressor:

Enable audio compressor link, the list box window will list all audio compressor components in the system. The user can select its own audio compressor from the list, if user has installed own audio compressor.

Start Capture Button:

Press the button, the test program will start to run, user will see real time video on the preview window.

Record:

User check this, it will start to record the video.

Contact Information

Any advice or comment about our products and service, or anything we can help you please don't hesitate to contact with us. We will do our best to support you for your products, projects and business.

Taiwan Commate Computer Inc.

Address	19F, No. 94, Sec. 1, Shin Tai Wu Rd., Shi Chih Taipei Hsien, Taiwan
TEL	+886-2-26963909
FAX	+886-2-26963911
Website	http://www.commell.com.tw
E-Mail	info@commell.com.tw (General Information) tech@commell.com.tw (Technical Support)

Commell is the trademark of Taiwan Commate Computer INC.