



### CYNA/CYNB16

16Amp - 400/600/800/1000V - SCR

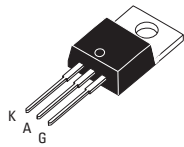
#### Applications

- Motor Control
- Overvoltage Crowbar Protection
- Capacitive Discharge Ignition
- Voltage Regulation
- Welding Equipment
- Capacitive Filter Soft Start (Inrush Current Control)

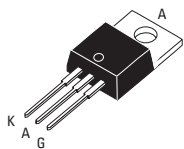
- > Suitable for General Purpose AC Switching
- > IGT 25 mA Max.
- > VDRM/VRMM 400, 600, 800, 1000V

#### Absolute Maximum Ratings

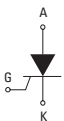
	CONDITIONS	SYMBOL	RATING
RMS On-State Current (full sine wave)	$T_c = 110^\circ\text{C}$ $T_c = 95^\circ\text{C}$	TO-220AB TO-220AB Iso $I_T(\text{RMS})$	16A
Average On-State Current	$T_c = 110^\circ\text{C}$ $T_c = 95^\circ\text{C}$	TO-220AB TO-220AB Iso $I_T(\text{AV})$	10A
Non Repetitive Surge Peak On-State Current (Full Cycle, $T_j$ Initial = $25^\circ\text{C}$ )	F = 50 Hz F = 60 Hz	$I_{\text{TSM}}$	190A 200A
$I^2t$ Value for fusing	$t_p = 10$ ms	$I^2t$	180A <sup>2</sup> s
Critical rate of rise of on-state current $I_G = 2 \times I_{GT}$ , $t_r < 100$ ns, $T_j = 125^\circ\text{C}$		$di/dt$	100A/ $\mu\text{s}$
Peak Gate Current @ $T_j = 125^\circ\text{C}$	$t_p = 20$ $\mu\text{s}$	$I_{GM}$	4A
Average Gate Power Dissipation @ $T_j = 125^\circ\text{C}$		$PG(\text{AV})$	1W
Storage Temperature Range		$T_{stg}$	-40 to +150 $^\circ\text{C}$
Operating Junction Temperature Range		$T_j$	-40 to +125 $^\circ\text{C}$
Isolation Voltage (CYNA Series only)		$V_{\text{ISO}}$	2500V <sub>RMS</sub>
Maximum Peak Reverse Gate Voltage		$V_{\text{RGM}}$	5V



TO-220AB Isolated (CYNA25)



TO-220AB Non-Isolated (CYNB25)



#### Electrical Characteristics <sup>NOTE 1</sup>

$I_{GT}$ MAX @ $V_D = 12$ V, $R_L = 30\Omega$		25mA
$V_{GT}$ MAX @ $V_D = 12$ V, $R_L = 30\Omega$		1.3V
$V_{GD}$ MIN @ $V_D = V_{\text{DRM}}$ , $R_L = 3.3k\Omega$	$T_j = 125^\circ\text{C}$	0.2V
$I_H$ MAX @ $I_T = 500$ mA (gate open)		40mA
$I_L$ MAX @ $I_G = 1.2 I_{GT}$		60mA
$dv/dt$ MIN @ $V_D = 67\%V_{\text{DRM}}$ (gate open)	$T_j = 125^\circ\text{C}$	500V/ $\mu\text{s}$
$V_{\text{TM}}$ MAX @ $I_{\text{TM}} = 32$ A, $t_p = 380\mu\text{s}$	$T_j = 25^\circ\text{C}$	1.6V
$I_{\text{DRM}}$ MAX @ $V_{\text{DRM}} = V_{\text{RRM}}$	$T_j = 25^\circ\text{C}$	5 $\mu\text{A}$
$I_{\text{RRM}}$ MAX @ $V_{\text{DRM}} = V_{\text{RRM}}$	$T_j = 125^\circ\text{C}$	2mA

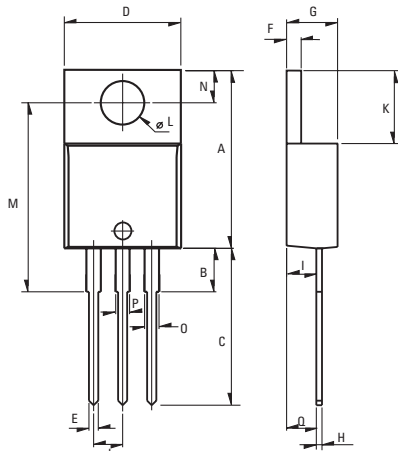
#### GENERAL NOTES

1. All parameters at 25 degrees C unless otherwise specified.

### Thermal Resistances

		SYMBOL	RATING
Junction to Case (AC)	TO-220AB	$R_{th(j-c)}$	1.2°C/W
Junction to Case (AC)	TO-220AB Isolated	$R_{th(j-c)}$	2.1°C/W
Junction to Ambient	TO-220AB	$R_{th(j-a)}$	60°C/W
Junction to Ambient	TO-220AB Isolated	$R_{th(j-a)}$	60°C/W

### Part Number Designation



Weight: 2.3g (0.08 oz)

Rated Current  
**16: 16 Amp**

Packaging  
**Blank: Bulk**  
**PT: Plastic Tube**

**SERIES**  
**CYN B 16 - 800 PT**

Isolation Type  
**A: Isolated**  
**B: Non-Isolated**

Maximum Blocking Voltage  
**400: 400Vpk**  
**600: 600Vpk**  
**800: 800Vpk**  
**1000: 1000Vpk**

### Dimensions

REF.	Millimeters			Inches		
	Min.	Typ.	Max.	Min.	Typ.	Max.
A	15.24		15.75	0.6		0.62
B		3.23			0.127	
C	12.78		13.79	0.503		0.543
D	9.96		10.36	0.392		0.408
E	0.69		0.94	0.027		0.037
F	1.22		1.32	0.048		0.052
G	4.62		4.83	0.182		0.19
H	0.46		0.61	0.018		0.024
I	2.49		2.84	0.098		0.112
J	2.39		2.69	0.094		0.106
K	6.48		6.88	0.255		0.271
L	3.78		3.89	0.149		0.153
M	15.49	16	16.51	0.61	0.63	0.65
N	2.59		2.9	0.102		0.114
O	0.99		1.55	0.039		0.061
P	0.99		1.55	0.039		0.061
Q		2.67			0.105	

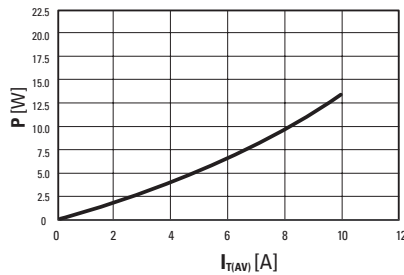


Fig. 1: Power dissipation versus average on-state current.

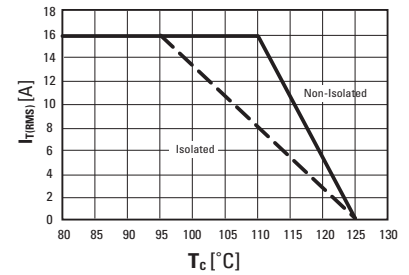


Fig. 2: RMS on-state current versus case temperature (full cycle)

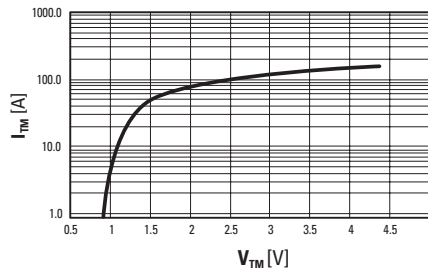


Fig. 3: On-state current versus on-state voltage (instantaneous values)

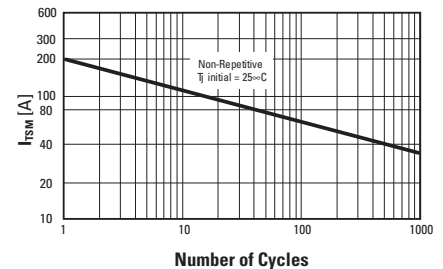


Fig. 4: Non-repetitive surge peak on-state current versus number of cycles.

### ISO9001 Certified

### Approvals

UL Recognized Component - E72445  
(For CYNA series)

### USA

Sales Support (877) 502-5500  
Tech Support (877) 702-7700  
Fax (619) 710-8540  
Email: sales@crydom.com  
Crydom Corp  
2320 Paseo de las Americas, Suite 201  
San Diego, CA 92154

### EUROPE - UK

Telephone +44 (0) 1202 365070  
Fax +44 (0) 1202 365090  
Email: intsales@crydom.com  
Crydom International Ltd.  
7 Cobham Road  
Ferndown Industrial Estate  
Wimborne, Dorset BH21 7PE

### Germany

Telephone +49 (0) 180 3000 506

### ASIA - Thailand

Telephone +66 (0)2 665 2517  
Fax +66 (0)2 665 2588  
Crydom Asia  
18/8 Fico Place 12th Floor  
Soi Sukhumvit 21 (Asoke)  
Klongtoey Nua, Wattana  
Bangkok, Thailand 10110