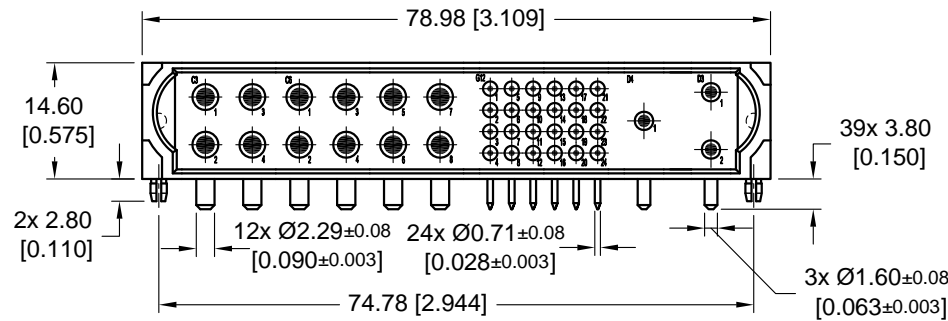
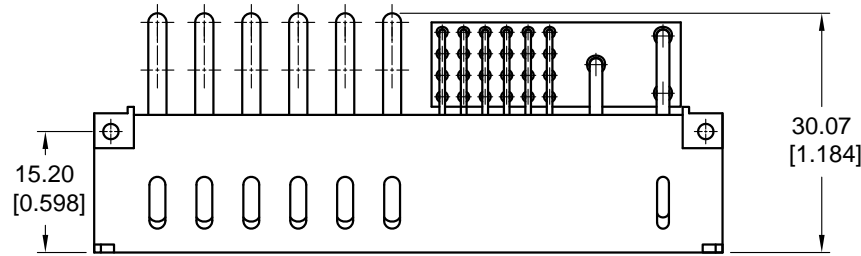
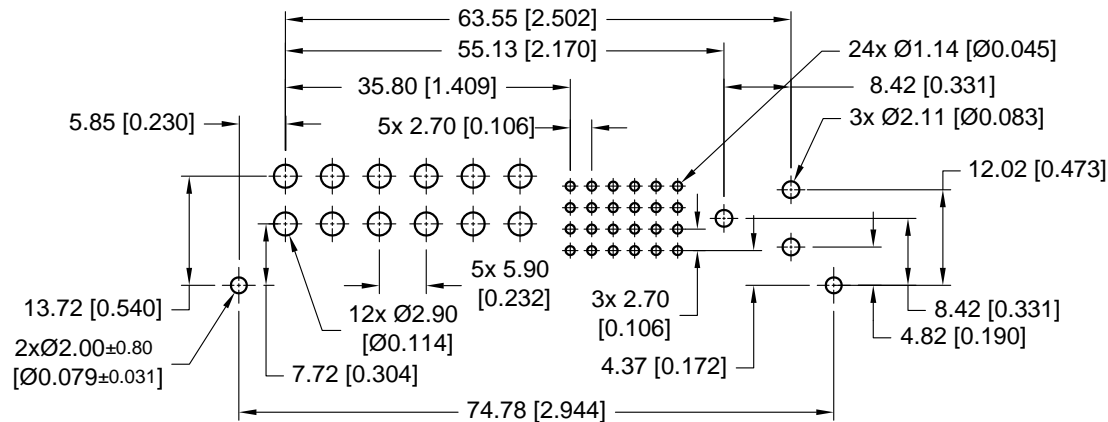


POSITRONIC ASIA PTE. LTD. BELIEVES THE DATA ON THE DRAWING TO BE RELIABLE. SINCE THE TECHNICAL INFORMATION IS GIVEN FREE OF CHARGE, THE USER EMPLOYS SUCH INFORMATION AT HIS OWN DISCRETION AND RISK. POSITRONIC ASIA PTE. LTD. ASSUMES NO RESPONSIBILITY FOR RESULTS OBTAINED OR DAMAGES INCURRED FROM USE OF SUCH INFORMATION IN WHOLE OR IN PART.

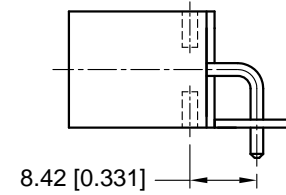
DATE	REV	REVISION RECORD	DRN	CKD	APP
02 DEC 08	NC	PA ECO 08257	LP	EH	NK



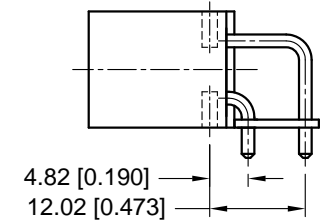
CONTACT HOLES PATTERN



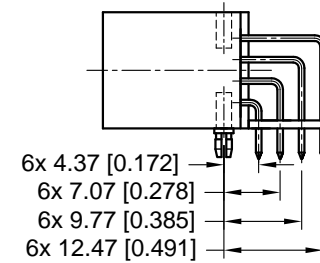
SIZE 16 CONTACTS



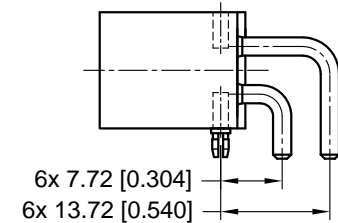
SIZE 16 CONTACTS



SIZE 22 CONTACTS



SIZE 12 CONTACTS



DRAWING NO.	PART NUMBER	REMARKS
ASK21815-1	SP2YGN2TN2AN3B48M0N9	-
ASK21815-2	SP2YGN2TN2AN3B48M0N9/AA	RoHS COMPLIANT PER RoHS DIRECTIVE 2002/95/EC OF 27 J/ 2003

POSITRONIC ASIA PTE. LTD
 3014A UBI ROAD 1, #07-01. SINGAPORE 408703
 Tel: (65) 6842-1419 / Fax: (65) 6842-1421 / Email: singapore@connectpositronic.com

NOTES:

- MATERIALS AND FINISHES
 INSULATOR: GLASS-FILLED POLYESTER, UL 94V-0. COLOR: BLUE.
 POWER CONTACTS: HIGH CONDUCTIVITY COPPER ALLOY WITH GOLD FLASH OVER NICKEL.
 SIGNAL CONTACTS: PRECISION MACHINED COPPER ALLOY WITH GOLD OVER NICKEL PLATE.
 PUSH-ON FASTENERS: BRASS WITH TIN PLATE.

SERIES	SCALE	DRAWN	CHECKED	APPROV
SP	NTS	LP	EH	NK
GENERAL TOL. LINEAR : ±0.38 [0.015] ANGULAR : ±5°				
TITLE SP2YGN2TN2AN3B48M0N9 SP2YGN2TN2AN3B48M0N9/AA				
UNLESS OTHERWISE SPECIFIED, ALL DIMENSIONS ARE IN MILLIMETERS [INCHES]	DATE 02 DEC 08	DRAWING NUMBER ASK21815-*	SHEET 1 OF 1	REV. N

Unless otherwise stated, Positronic code and part number are marked on each connector. The contents of the code are subjected to the discretion of Positronic Asia Pte Ltd and it is for internal use only. Marking may be done on either side or both sides of the connector.