



**MICRO SWITCH**

FREEPORT, ILLINOIS, U.S.A.  
A DIVISION OF HONEYWELL

FED. MFG. CODE 91929

# SWITCH - BASIC

CATALOG LISTING

## BZ-2RS72-A2

### AMF6500

BZ-2RS72-A2  
PAGE 1 OF 1

M

DRAWING NUMBER

ISSUE

12

RELEASE NO. PR-3684

REPLACES

CHECK

25 NOV 05

25 NOV 05

26 JUN 70

08 JUN 71

31 JULY 72

23 JAN 73

28 NOV 73

20 APR 78

22 NOV 93

19 AUG 98

16 JUNE 64

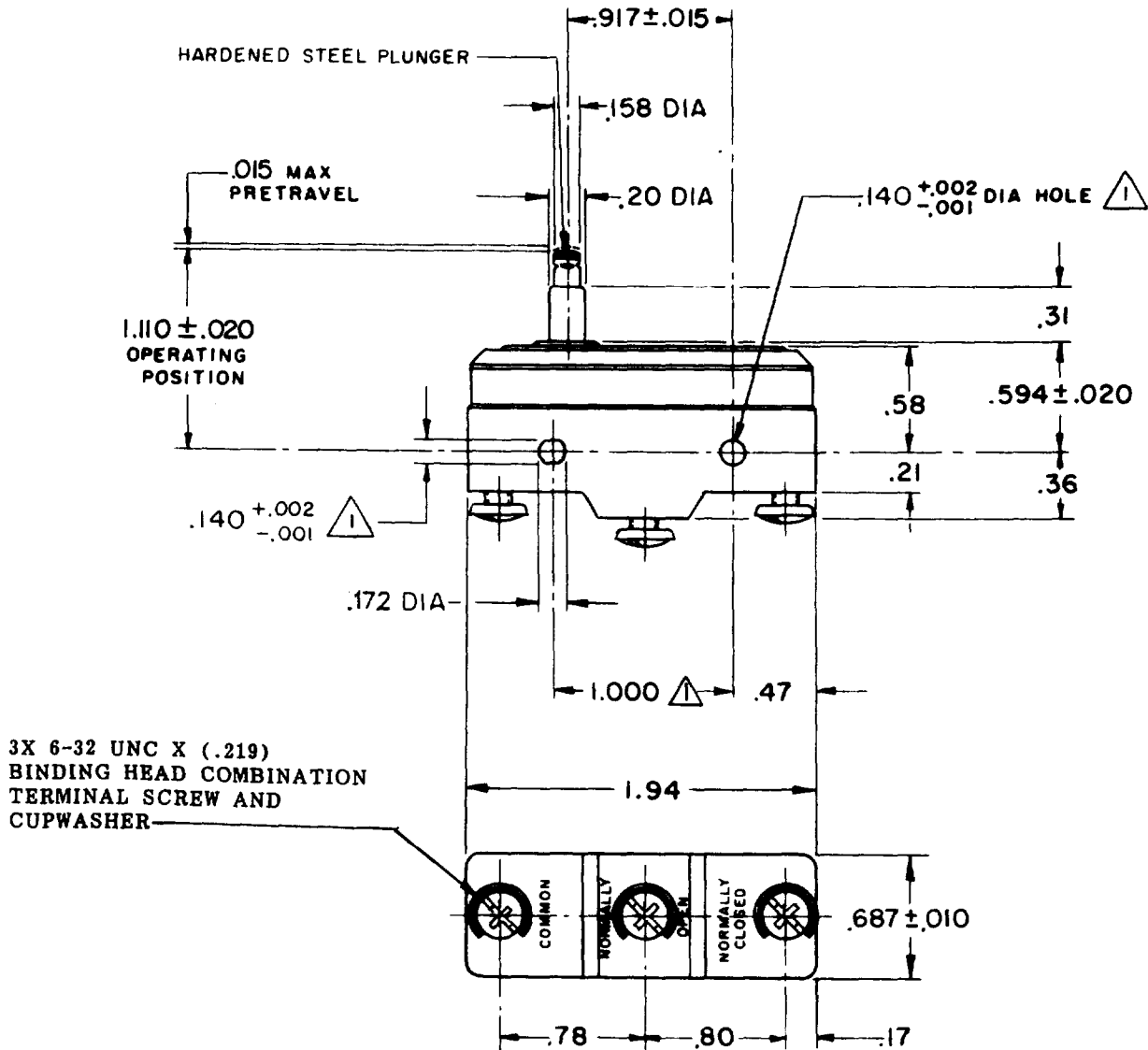
RES

RASTER

FO-80376

DRAWN

16 JUNE 64



NOTES  
 ▲ MOUNTING HOLES WILL ACCEPT PINS OR SCREWS OF  $.139$  MAX DIA ON  $1.000 \pm .002$  CENTERS.  
 2- CONTACT MATERIAL - GOLD ALLOY

THIS DRAWING COVERS A PROPRIETARY ITEM AND IS THE PROPERTY OF MICRO SWITCH, A DIVISION OF MINNEAPOLIS-HONEYWELL REGULATOR CO. THIS DRAWING IS NOT TO BE COPIED OR USED WITHOUT THE APPROVAL OF MICRO SWITCH.

CHARACTERISTICS	ELECTRICAL DATA	SCALE FULL
OPERATING FORCE - - - - - 9-13 OZ	CONTACT ARRANGEMENT S P D T	DO NOT SCALE PRINT
RELEASE FORCE - - - - - 4 OZ MIN	CODE L22 1A-125 VAC  1A 250V ~ T85 25E3	UNLESS OTHERWISE NOTED DIMENSIONS ARE IN INCHES <b>TOLERANCES ARE:</b>
DIFFERENTIAL TRAVEL - - .0004 - .0020		ONE PLACE (.0) $\pm .030$
OVERTRAVEL - - - - - .060 MIN		TWO PLACE (.001) $\pm .015$
		THREE PLACE (.000) $\pm .005$
		ANGLES $\pm$
		WEIGHT