

SPECIFICATIONS

Mechanical

Contact Retention Force: 0.5Kg min.

Electrical

Current Rating: 1A

Contact Resistance: 20mΩ max.

Dielectrical Withstanding Voltage: 1000V

Insulation Resistance: 10000MΩ min.

Physical

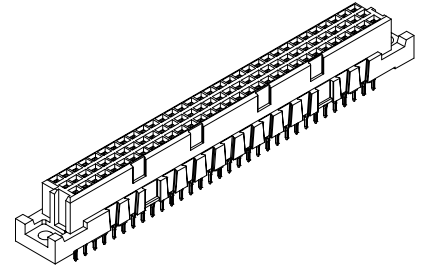
Housing: PBT, UL 94-0, Gray White

Contact: Phosphor Bronze

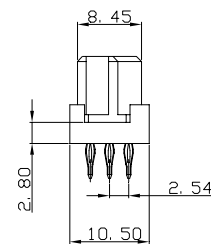
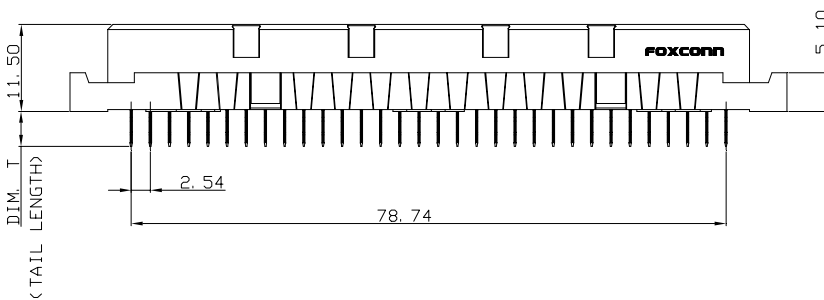
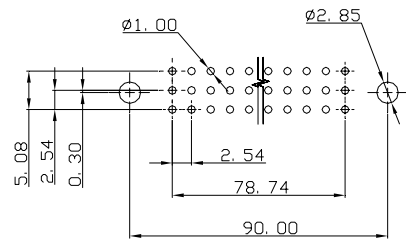
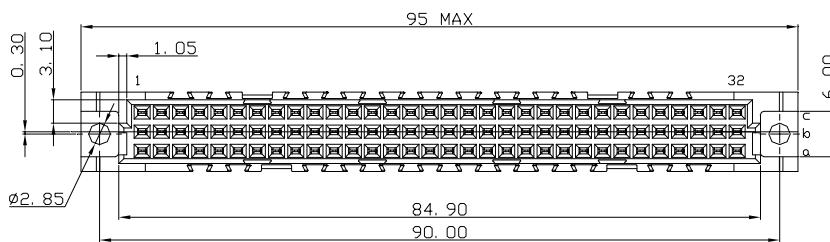
Plating: See "ORDERING INFORMATION"

DIN41612 CONNECTOR

**RZ Series,
Fixed board, style C
Receptacle, Press Fit Type
2.54mm Pitch
3 Rows**



DRAWING



ORDERING INFORMATION

PRODUCT NO.: RZ 2 3 0 9 6 * - P C 9 0 1 - **

<p>POS. NO.: _____ 096=096 pos.</p> <p>Mating Area Plating: _____ 3=0.76um(30u")Min. gold plating C=0.76um(30u")Min. FPT plating, gold flash included K=0.38um(15u")Min. FPT plating, gold flash included</p> <p>Tail Style: _____ P=Press Fit</p>	<p>Lead Free Code: N=None F=Lead Free</p> <p>Package Type: A=Tube 4=Tray</p> <p>Tail length(Dim T): 9=4.6mm</p>
---	--