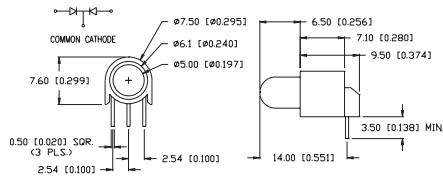




## SSF-LXH139 Series

## T-5mm 3-Leaded, Single Level, Bi-Color



### FEATURES / OPTIONS

- ▶ State-of-the-Art, Chip Technology
- ▶ Easy Drop-In Board Installation
- ▶ Right Angle to the Board Position
- ▶ Choice of Colors and Lens Finishes
- ▶ Low Current Versions Available
- ▶ Color or Intensity Sorting Available
- ▶ Blinking LED
- ▶ With Internal Resistor for 5V and 12V Operation
- ▶ Black or Gray Holders for High Contrast
- ▶ Common Anode Version

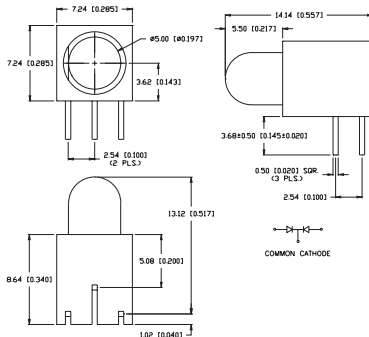
### APPLICATIONS / USES

- ▶ Board Level Status Indicators
- ▶ Board Level Fault Indicators
- ▶ Circuit Troubleshooting Indicators
- ▶ Warning/Alarm Lights
- ▶ Backlighting of Overlays
- ▶ Post Lighting Switches and Keypads

Lumex Part Number	Die Material	Emitted Color	Peak (nm)	Lens	Operating Current (mA)	Operating TYP. Vf (V)	Brightness TYP. Mcd	@ mA	View Angle° 2θ	Component LED Used
SSF-LXH139SISUGW	AllnGaP	Super High Intensity Red	636	Milky White	5-25	2	700	20	60	SSL-LX5099SISUGW
	AllnGaP	Super Ultra Green	574	Diffused	5-25	2.2	200	20		
SSF-LXH139SISYW	AllnGaP	Super High Intensity Red	636	Milky White	5-25	2	800	20	60	SSL-LX5099SISYW
	AllnGaP	Super Yellow	590	Diffused	5-25	2	400	20		
SSF-LXH139SYSUGW	AllnGaP	Super Yellow	590	Milky White	5-25	2	400	20	60	SSL-LX5099SYSUGW
	AllnGaP	Super Ultra Green	574	Diffused	5-25	2.2	200	20		

## SSF-LXH169 Series

## T-5mm 3-Leaded, Single Level, Bi-Color, Offset Cathode Lead



### FEATURES / OPTIONS

- ▶ State-of-the-Art, Chip Technology
- ▶ Easy Drop-In Board Installation
- ▶ Right Angle to the Board Position
- ▶ Choice of Colors and Lens Finishes
- ▶ Low Current Versions Available
- ▶ Color or Intensity Sorting Available
- ▶ Blinking LED
- ▶ With Internal Resistor for 5V and 12V Operation
- ▶ Black or Gray Holders for High Contrast
- ▶ Common Anode Version

### APPLICATIONS / USES

- ▶ Board Level Status Indicators
- ▶ Board Level Fault Indicators
- ▶ Circuit Troubleshooting Indicators
- ▶ Warning/Alarm Lights
- ▶ Backlighting of Overlays
- ▶ Post Lighting Switches and Keypads

Lumex Part Number	Die Material	Emitted Color	Peak (nm)	Lens	Operating Current (mA)	Operating TYP. Vf (V)	Brightness TYP. Mcd	@ mA	View Angle° 2θ	Component LED Used
SSF-LXH169SISUGW	AllnGaP	Super High Intensity Red	636	Milky White	5-25	2	700	20	60	SSL-LX5099SISUGW/R
	AllnGaP	Super Ultra Green	574	Diffused	5-25	2.2	200	20		
SSF-LXH169SISYW	AllnGaP	Super High Intensity Red	636	Milky White	5-25	2	800	20	60	SSL-LX5099SISYW/R
	AllnGaP	Super Yellow	590	Diffused	5-25	2	400	20		
SSF-LXH169SYSUGW	AllnGaP	Super Yellow	590	Milky White	5-25	2	400	20	60	SSL-LX5099SYSUGW/R
	AllnGaP	Super Ultra Green	574	Diffused	5-25	2.2	200	20		



USA/Canada +1-800-278-5666  
Europe +49-6081-964380  
Asia +886-3-5821124



[www.lumex.com](http://www.lumex.com)



USA/Canada +1-847-359-8904  
Europe +49-6081-964381  
Asia +886-3-5821154