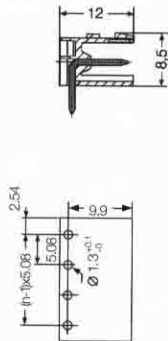
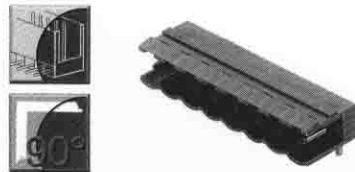


Omnimate Range - 5.08 mm Pitch



Pin headers SL 5.08/90



Technical data	VDE	UL	CSA
Rated voltage (V)	250*	300	300
Rated current (A)	12	15	15

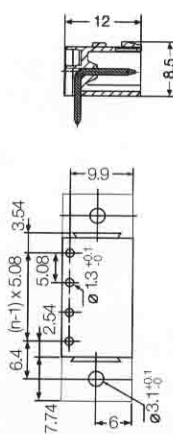
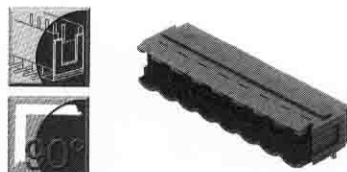
*Pollution severity 3 / Overvoltage category III
Additional technical data see page 216

Solder pin length 4.5 mm 4.5 mm

Color		●	●	
Poles	Type	Part No.	Part No.	Qty.
2	SL 5.08/90/2	1512660000	1512610000	100
3	SL 5.08/3/90	1512760000	1512710000	100
4	SL 5.08/4/90	1512860000	1512810000	100
5	SL 5.08/5/90	1512960000	1512910000	50
6	SL 5.08/6/90	1513060000	1513010000	50
7	SL 5.08/7/90	1513160000	1513110000	50
8	SL 5.08/8/90	1513260000	1513210000	50
9	SL 5.08/9/90	1513360000	1513310000	50
10	SL 5.08/10/90	1513460000	1513410000	50
11	SL 5.08/11/90	1513560000	1513510000	50
12	SL 5.08/12/90	1513660000	1513610000	50
13	SL 5.08/13/90	1513760000	1513710000	50
14	SL 5.08/14/90	1513860000	1513810000	50
15	SL 5.08/15/90	1513960000	1513910000	50
16	SL 5.08/16/90	1514060000	1514010000	50
17	SL 5.08/17/90	1514160000	1514110000	20
18	SL 5.08/18/90	1514260000	1514210000	20
19	SL 5.08/19/90	1514360000	1514310000	20
20	SL 5.08/20/90	1514460000	1514410000	20
21	SL 5.08/21/90	1514560000	1514510000	20
22	SL 5.08/22/90	1514660000	1514610000	20
23	SL 5.08/23/90	1514760000	1514710000	20
24	SL 5.08/24/90	1514860000	1514810000	20

Accessories	Page
Mounting	-
Marking	190
Coding	192, 193
Miscellaneous	199

Pin headers SL 5.08/90B



Technical data	VDE	UL	CSA
Rated voltage (V)	250*	300	300
Rated current (A)	12	15	15

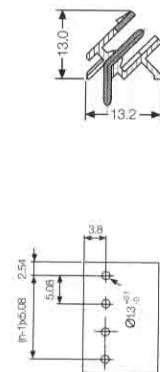
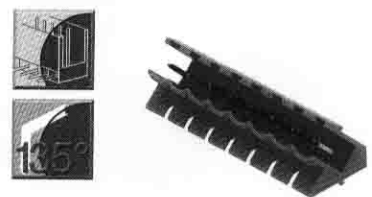
*Pollution severity 3 / Overvoltage category III
Additional technical data see page 216

Solder pin length 4.5 mm 4.5 mm

Color		●	●	
Poles	Type	Part No.	Part No.	Qty.
2	SL 5.08/2/90B	1514960000	1514910000	100
3	SL 5.08/3/90B	1515060000	1515010000	100
4	SL 5.08/4/90B	1515160000	1515110000	100
5	SL 5.08/5/90B	1515260000	1515210000	50
6	SL 5.08/6/90B	1515360000	1515310000	50
7	SL 5.08/7/90B	1515460000	1515410000	50
8	SL 5.08/8/90B	1515560000	1515510000	50
9	SL 5.08/9/90B	1515660000	1515610000	50
10	SL 5.08/10/90B	1515760000	1515710000	50
11	SL 5.08/11/90B	1515860000	1515810000	50
12	SL 5.08/12/90B	1515960000	1515910000	50
13	SL 5.08/13/90B	1516060000	1516010000	50
14	SL 5.08/14/90B	1516160000	1516110000	50
15	SL 5.08/15/90B	1516260000	1516210000	50
16	SL 5.08/16/90B	1516360000	1516310000	50
17	SL 5.08/17/90B	1516460000	1516410000	20
18	SL 5.08/18/90B	1516560000	1516510000	20
19	SL 5.08/19/90B	1516660000	1516610000	20
20	SL 5.08/20/90B	1516760000	1516710000	20
21	SL 5.08/21/90B	1516860000	1516810000	20
22	SL 5.08/22/90B	1516960000	1516910000	20
23	SL 5.08/23/90B	1517060000	1517010000	20
24	SL 5.08/24/90B	1517160000	1517110000	20

Accessories	Page
Mounting	187**
Marking	190
Coding	192, 193
Miscellaneous	199

Pin headers SL 5.08/135



Technical data	VDE	UL	CSA
Rated voltage (V)	250*	300	300
Rated current (A)	12	15	15

*Pollution severity 3 / Overvoltage category III
Additional technical data see page 216

Solder pin length 4.5 mm 4.5 mm

Color		●	●	
Poles	Type	Part No.	Part No.	Qty.
2	SL 5.08/2/135	1605760000	1635270000	100
3	SL 5.08/3/135	1605770000	1635280000	100
4	SL 5.08/4/135	1605780000	1635290000	100
5	SL 5.08/5/135	1605790000	1635300000	50
6	SL 5.08/6/135	1605800000	1635310000	50
7	SL 5.08/7/135	1605810000	1635320000	50
8	SL 5.08/8/135	1605820000	1635330000	50
9	SL 5.08/9/135	1605830000	1635340000	50
10	SL 5.08/10/135	1605840000	1635350000	50
11	SL 5.08/11/135	1605850000	1635360000	50
12	SL 5.08/12/135	1605860000	1635370000	50
13	SL 5.08/13/135	1605870000	1635380000	50
14	SL 5.08/14/135	1605880000	1635390000	50
15	SL 5.08/15/135	1605890000	1635400000	50
16	SL 5.08/16/135	1605900000	1635410000	50
17	SL 5.08/17/135	1605910000	1635420000	20
18	SL 5.08/18/135	1605920000	1635430000	20
19	SL 5.08/19/135	1605930000	1635440000	20
20	SL 5.08/20/135	1605940000	1635450000	20
21	SL 5.08/21/135	1605950000	1635460000	20
22	SL 5.08/22/135	1605960000	1635470000	20
23	SL 5.08/23/135	1605970000	1635480000	20
24	SL 5.08/24/135	1605980000	1635490000	20

Accessories	Page
Mounting	-
Marking	190
Coding	192, 193
Miscellaneous	-