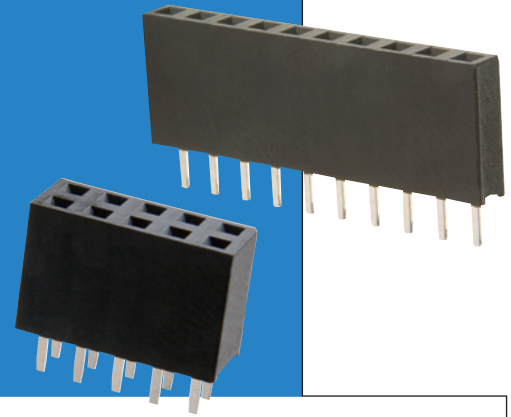


M20 Connectors

Female Vertical PC Tail

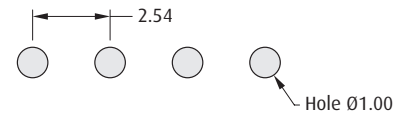
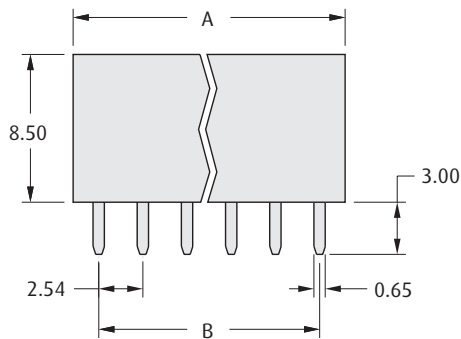
A comprehensive range of 2.54mm pitch connectors for board-to-board and cable-to-board applications.

- ❖ Twin-leaf phosphor bronze contacts.
- ❖ Suitable for use with male connectors on pages 127 to 134.



2.54mm (.100") PITCH

SINGLE ROW

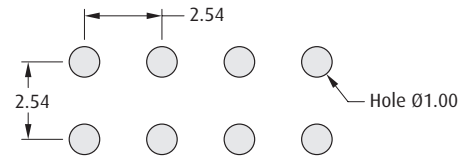
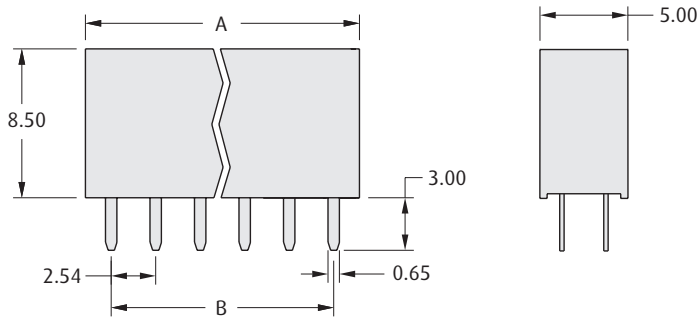


Recommended PC Board Pattern

CALCULATION

| | |
|----------|--|
| A | $(2.54 \times \text{No. of ways per row}) + 0.4$ |
| B | $2.54 \times (\text{No. of ways per row} - 1)$ |

DOUBLE ROW



Recommended PC Board Pattern

HOW TO ORDER

M20 - 78 X XX XX

SERIES CODE

NO. OF ROWS

| | |
|----------|------------|
| 2 | Single Row |
| 3 | Double Row |

FINISH

| | | |
|-----------|------------|--|
| 42 | Gold + Tin | |
| 46 | Tin | |

NO. OF WAYS PER ROW

02 to 40

All dimensions in mm.

www.harwin.com

